

Converting Colors

HunterLab(63.1453, 8.0633,
7.2625)

Have a look what the booklet for
HunterLab(63.1453, 8.0633, 7.2625)
contains.

HunterLab(63.0862, 8.2748, 7.3291)	3
<i>Conversions</i>	4
<i>Details</i>	6
<i>Harmonies</i>	12
<i>Previews</i>	24
<i>Color Blindness Simulation</i>	28
<i>CSS Examples</i>	31

Color

**HunterLab(63.0862, 8.2748,
7.3291)**

Conversions

Conversions Part 1

Format	Color
Hex	C4A1A1
RGB	196, 161, 161
RGB Percent	77%, 63%, 63%
CMY	0.2314, 0.3686, 0.3686
CMYK	0.00, 0.18, 0.18, 0.23
HSL	0°, 23%, 70%
HSV	0°, 18%, 77%
XYZ	41.9428, 39.7987, 39.1895
YIQ	171.4650, 20.8600, 7.4200

Conversions

Conversions Part 2

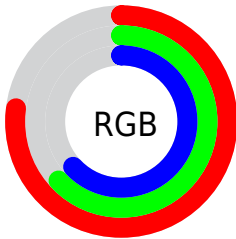
Format	Color
RYB	196, 161, 161
Decimal	12886433
CIELab	69.33, 12.88, 4.85
CIELCh	69, 13.762, 20.633
Yxy	39.8005, 0.3468, 0.3291
Android (android.graphics.Color)	4291076513 (0xFFC4A1A1)
YUV	171.4650, -5.1592, 21.5172
Hunter-Lab	63.0862, 8.2748, 7.3291

Details

The HunterLab color $63.0862, 8.2748, 7.3291$ is a light color, and the websafe version is hex $CC9999$. A complement of this color would be $71.4431, -14.0893, 0.4353$, and the grayscale version is $64.0237, -3.4161, 3.4785$.

A 20% lighter version of the original color is $86.5750, 8.1976, 8.9995$, and $42.2065, 8.3480, 5.4307$ is the 20% darker color. If you saturate the color by 10%, you get $57.3069, 15.5454, 9.3509$, and if you desaturate by 10%, it is $69.2402, 1.3041, 5.4380$.

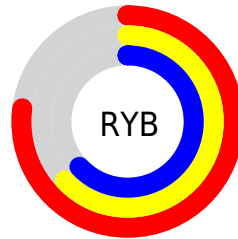
Distribution



Red (77%)

Green (63%)

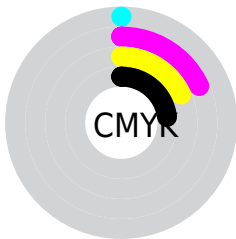
Blue (63%)



Red (77%)

Yellow (63%)

Blue (63%)

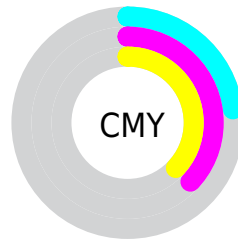


Cyan (0%)

Magenta (18%)

Yellow (18%)

Black (23%)



Cyan (23%)

Magenta (37%)

Yellow (37%)

Brightness & Saturation Gradients

These gradients show how the HunterLab color 63.0862, 8.2748, 7.3291 changes by changing the brightness by 10 percent. The first figure shows a shift by +10% for each color and the second figure -10%.

Similar to the brightness gradients but the following saturation gradients show a change of the HunterLab color 63.0862, 8.2748, 7.3291 by changing the saturation by 10% instead.

■ 63.0862, 8.2748,
7.3291

■ 63.0862, 8.2748,
7.3291

185.8176, 6.4691,
15.7955

■ 52.3288, 8.1942,
6.4929

■ 86.5214, 8.2289,
9.0658

■ 42.2624, 8.0379,
5.6749

■ 99.1313, 8.1189,
9.9649

■ 32.9398, 7.7925,
4.8740

112.3003, 7.9563,
10.8851

■ 24.4259, 7.4426,
4.0866

126.0058, 7.7450,
11.8261

■ 16.8065, 6.9664,
3.3054

140.2275, 7.4881,
12.7879

■ 10.2022, 6.3321,
2.5779

154.9474, 7.1883,

0.0000, INF, NaN

13.7702

0.0000, NaN, NaN

170.1490, 6.8479,
14.7729

0.0000, NaN, NaN

■ 63.0862, 8.2748,
7.3291

■ 63.0862, 8.2748,
7.3291

■ 57.3069, 15.5454,
9.3509

■ 69.2402, 1.3041,
5.4380

■ 51.9694, 23.0919,
11.4953

■ 75.7080, -5.3718,
3.6667

■ 47.1629, 30.8013,
13.7324

■ 82.4460, -11.7847,
2.0028

■ 42.9903, 38.4299,
15.9879

■ 89.4188, -17.9703,
0.4321

■ 39.5618, 45.5532,
18.1275

■ 95.1188, -22.7570,
-0.7581

■ 36.9749, 51.5795,
19.9598

■ 35.2800, 55.8981,
21.2839

■ 34.4045, 58.2610,
22.0120

■ 34.2583, 58.6650,
22.1368

Harmonies

Analogous

The Analogous color harmony consists of three colors that are next to each other on the color wheel.



63.0876, 8.9279, 1.5454



63.0862, 8.2748, 7.3291



63.0876, 4.4334, 11.6463

Triad

The Triadic color harmony groups three colors that are evenly spaced from another and form a triangle on the color wheel.



63.0876, 8.2727, 7.3302



63.0876, -12.3920, 10.2618



63.0876, -5.3132, -8.9156

Complementary

The Complementary color scheme is a pair of colors which are on the opposite of each other on the color wheel.



63.0862, 8.2748, 7.3291



71.4431, -14.0893, 0.4353

Split Complementary

Split-complementary colors differ from the complementary color scheme. The scheme consists of three colors, the original color and two neighbors of the complement color.



63.0876, -10.8109, -6.0562



63.0862, 8.2748, 7.3291



63.0876, -14.7917, 5.2660

Square

The Square scheme is like the rectangle color scheme, but the four colors are evenly spaced on the color wheel.



63.0876, 8.2727, 7.3302



63.0876, -7.5477, 13.2211



63.0876, -14.2244, -0.7276



63.0876, 0.9202, -8.2257

Rectangle

The Rectangle color scheme consists of four colors that form a rectangle on the color wheel.



63.0862, 8.2748, 7.3291



63.0876, 0.6643, 13.2929



63.0876, -14.2244, -0.7276



63.0876, -7.3046, -8.3279

Sweetspot

The Sweet Spot groups the original color and five complimentary colors.



63.0876, 8.2727, 7.3302



95.5719, -0.7793, 6.6412



64.1962, 14.0990, -8.4294



43.9318, -0.0606, 3.1526

0.0000, NaN, NaN



46.2646, -2.4686, 2.5136

Same Dimension

The Same Dimension uses a secret algorithm to generate beautiful new colors.



63.0876, 8.2727, 7.3302



82.1488, 14.4879, 10.7906



68.0805, -0.5828, 12.5757



31.7460, 1.0844, 2.6564



27.4611, 47.0246, 17.7446



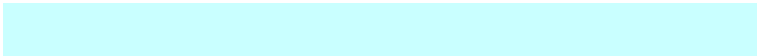
5.7087, 9.7729, 3.6887

Inverse Universe

The Inverse Universe completely reimagines the original color for something new.



71.4431, -14.0893, 0.4353



95.5073, -21.3269, -0.2538



66.0327, -5.5847, -6.3009



33.8058, -4.4127, 0.9619



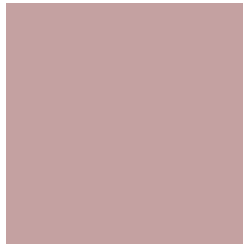
52.8418, -28.0106, -5.5809



10.9841, -5.8227, -1.1597

Previews

White Background



This preview shows how the HunterLab color 63.0862, 8.2748, 7.3291 looks on a white background.

Color Contrast Check

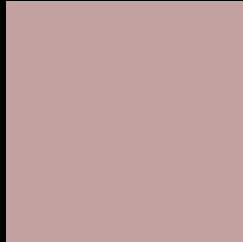
Large Text (above 18pt) WCAG AA × Fail

Any Text WCAG AA × Fail

Large Text (above 18pt) WCAG AAA × Fail

Any Text WCAG AAA × Fail

Black Background



This preview shows how the HunterLab color 63.0862, 8.2748, 7.3291 looks on a black background.

Color Contrast Check

Large Text (above 18pt) WCAG AA ✓ Pass

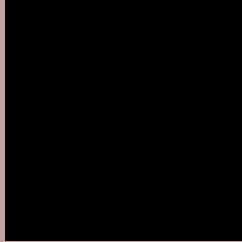
Any Text WCAG AA ✓ Pass

Large Text (above 18pt) WCAG AAA ✓ Pass

Any Text WCAG AAA ✓ Pass

If you want to check with other color combinations, try the [Color Contrast Checker](#).

HunterLab 63.0862, 8.2748, 7.3291 Background



This preview shows how black text looks on a background with the HunterLab color 63.0862, 8.2748, 7.3291.



This preview shows how white text looks on a background with the HunterLab color 63.0862, 8.2748,

7.3291.

Color Blindness Simulation

Color vision deficiency is a very complex topic, and I could not describe the different causes any better than Wikipedia does, so if you want to learn more, you should check out their [article about color blindness](#).

Dichromacy



Original Color

63.0862, 8.2748, 7.3291

Protanopia

63.2272, -2.7663, 5.5312

Deuteranopia

63.1726, 4.1864, 7.7863



Tritanopia

62.9644, 11.3474, 2.2449

Trichromacy



Original Color

63.0862, 8.2748, 7.3291

Protanomaly

63.0686, 1.1222, 5.8646

Deuteranomaly

63.1972, 5.7190, 7.8405

Tritanomaly

63.1182, 10.1999, 4.2728

Monochromacy



Original Color

63.0862, 8.2748, 7.3291

Achromatopsia

63.8154, -3.4050, 3.4672

Achromatomaly

63.3488, 0.7672, 4.8319

CSS Examples

Text

The CSS property to change the color of the text to HunterLab 63.0862, 8.2748, 7.3291 is called "color". The color property can be set on classes, ids or directly on the HTML element.

This example shows how text in the color `rgb(196, 161, 161)` looks like.

```
.text, #text, p{  
    color:rgb(196, 161, 161)  
}
```

If you want to add a text shadow in that color use the text-shadow property, you can generate a text shadow directly with our [CSS Text Shadow Generator](#).

Here you see how black text with a 4 pixel rgb(196, 161, 161) colored shadow looks like.

```
.shadow{ text-shadow: 4px 4px 2px rgb(196, 161, 161) }
```

Border

The CSS property to change the border of an element to HunterLab 63.0862, 8.2748, 7.3291 is called "border". The border property can be set on classes, ids or directly on the HTML element.

This example shows the color as border, it can be applied via the CSS property "border" or "border-color".

```
.border, #border, table{ border:4px solid rgb(196, 161, 161) }
```


If only the border color should be changed use the property `border-color`.

```
.border{ border-color:rgb(196, 161, 161) }
```

If you want to add a box shadow in that color use:

Here you see how a box with a 4 pixel `rgb(196, 161, 161)` colored shadow looks like.

```
.boxshadow{ -moz-box-shadow:4px 4px 4px  
4px rgb(196, 161, 161); -webkit-box-  
shadow:4px 4px 4px 4px rgb(196, 161, 161);  
box-shadow:4px 4px 4px 4px rgb(196, 161,  
161) }
```

Background

The CSS property to change the background color of an element to HunterLab 63.0862, 8.2748, 7.3291 is called "background". The background property can be set on classes, ids or directly on the HTML element.

```
.background, #background, body{  
background: rgb(196, 161, 161) }
```

If only the background color should be changed can be used:

```
.background{ background-color: rgb(196,  
161, 161) }
```

This example shows the color as background, it is applied via the CSS property "background".

To optimize and compress your CSS code, you can use our [online CSS compressor and optimizer](#) based on csstidy. If you want to create a linear or radial gradient as background or border, check our [CSS Gradient Generator](#).

Hey! You found this booklet interesting? Support Converting Colors with the new Membership Option!

The pro membership hides all ads, plus gives you double the colors in the color bucket, and more awesome pro features!

[Learn more, Memberships starting at \\$2.50/m!](#)

**Follow me
on Twitter!**

@ConvertingColor