

Converting Colors

HunterLab(63.1532, 21.6881,
8.0327)

Have a look what the booklet for
HunterLab(63.1532, 21.6881,
8.0327) contains.

HunterLab(63.0328, 21.7285, 7.9380)	3
<i>Conversions</i>	4
<i>Details</i>	6
<i>Harmonies</i>	12
<i>Previews</i>	24
<i>Color Blindness Simulation</i>	28
<i>CSS Examples</i>	31

Color

**HunterLab(63.0328, 21.7285,
7.9380)**

Conversions

Conversions Part 1

Format	Color
Hex	DB97A0
RGB	219, 151, 160
RGB Percent	86%, 59%, 63%
CMY	0.1412, 0.4078, 0.3725
CMYK	0.00, 0.31, 0.27, 0.14
HSL	352°, 49%, 73%
HSV	352°, 31%, 86%
XYZ	46.6252, 39.7313, 38.4692
YIQ	172.3580, 37.6390, 17.2150

Conversions

Conversions Part 2

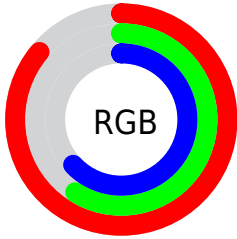
Format	Color
R _Y B	219, 151, 160
Decimal	14391200
CIE Lab	69.28, 26.75, 5.64
CIE LCh	69, 27.343, 11.911
Yxy	39.7332, 0.3735, 0.3183
Android (android.graphics.Color)	4292581280 (0xFFDB97A0)
YUV	172.3580, -6.0925, 40.9050
Hunter-Lab	63.0328, 21.7285, 7.9380

Details

The HunterLab color **63.0328, 21.7285, 7.9380** is a light color, and the websafe version is hex **CC9999**. A complement of this color would be **78.6743, -24.8534, 2.0914**, and the grayscale version is **64.3925, -3.4358, 3.4986**.

A 20% lighter version of the original color is **83.8504, 14.1495, 6.4570**, and **42.2070, 20.5595, 6.0439** is the 20% darker color. If you saturate the color by 10%, you get **57.1939, 30.6328, 9.6568**, and if you desaturate by 10%, it is **69.4016, 13.0003, 6.5567**.

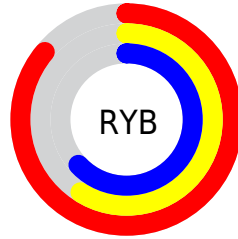
Distribution



Red (86%)

Green (59%)

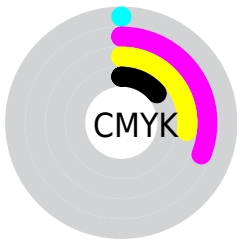
Blue (63%)



Red (86%)

Yellow (59%)

Blue (63%)

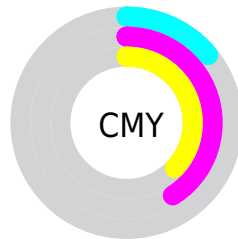


Cyan (0%)

Magenta (31%)

Yellow (27%)

Black (14%)



Cyan (14%)

Magenta (41%)

Yellow (37%)

Brightness & Saturation Gradients

These gradients show how the HunterLab color 63.0328, 21.7285, 7.9380 changes by changing the brightness by 10 percent. The first figure shows a shift by +10% for each color and the second figure -10%.

Similar to the brightness gradients but the following saturation gradients show a change of the HunterLab color 63.0328, 21.7285, 7.9380 by changing the saturation by 10% instead.

63.0328, 21.7285,
7.9380

63.0328, 21.7285,
7.9380

185.7412, 24.7571,
16.7032

52.2787, 21.0064,
7.0593

86.4622, 22.8876,
9.7523

42.2157, 20.1802,
6.1953

99.0692, 23.3469,
10.6871

32.8969, 19.2339,
5.3441

112.2357, 23.7341,
11.6413

24.3871, 18.1522,
4.5008

125.9386, 24.0548,
12.6149

16.7722, 16.9212,
3.6557

140.1579, 24.3136,
13.6081

10.1731, 15.5478,
2.9019

154.8754, 24.5147,

0.0000, INF, NaN

14.6206

0.0000, NaN, NaN

170.0748, 24.6615,
15.6523

0.0000, NaN, NaN

■ 63.0328, 21.7285,
7.9380

■ 63.0328, 21.7285,
7.9380

■ 57.1939, 30.6328,
9.6568

■ 69.4016, 13.0003,
6.5567

■ 51.9841, 39.5281,
11.7259

■ 76.2107, 4.5366,
5.4730

■ 47.5231, 48.0488,
14.1178

■ 83.3933, -3.6488,
4.6462

■ 43.9319, 55.6307,
16.7276

■ 90.8951, -11.5718,
4.0370

■ 41.3070, 61.5772,
19.3557

■ 96.8505, -16.4721,
1.4734

■ 39.6784, 65.2961,
21.7328

■ 38.9213, 66.8815,
23.3859

Harmonies

Analogous

The Analogous color harmony consists of three colors that are next to each other on the color wheel.



63.0343, 20.9611, -4.0328



63.0328, 21.7285, 7.9380



63.0343, 15.3949, 16.7901

Triad

The Triadic color harmony groups three colors that are evenly spaced from another and form a triangle on the color wheel.



63.0343, 21.7258, 7.9391



63.0343, -18.5292, 18.0958



63.0343, -10.6071, -22.1891

Complementary

The Complementary color scheme is a pair of colors which are on the opposite of each other on the color wheel.



63.0328, 21.7285, 7.9380



78.6743, -24.8534, 2.0914

Split Complementary

Split-complementary colors differ from the complementary color scheme. The scheme consists of three colors, the original color and two neighbors of the complement color.



63.0343, -20.1621, -13.6954



63.0328, 21.7285, 7.9380



63.0343, -24.4863, 10.0810

Square

The Square scheme is like the rectangle color scheme, but the four colors are evenly spaced on the color wheel.



63.0343, 21.7258, 7.9391



63.0343, -8.2171, 21.8480



63.0343, -25.0600, -1.4366



63.0343, 1.6348, -23.0699

Rectangle

The Rectangle color scheme consists of four colors that form a rectangle on the color wheel.



63.0328, 21.7285, 7.9380



63.0343, 8.2684, 20.3535



63.0343, -25.0600, -1.4366



63.0343, -14.2147, -20.0631

Sweetspot

The Sweet Spot groups the original color and five complimentary colors.



63.0343, 21.7258, 7.9391



92.1979, 3.4477, 6.2865



63.9855, 28.6631, -22.1706



42.0862, 2.2637, 2.9824

0.0000, NaN, NaN



46.2646, -2.4686, 2.5136

Same Dimension

The Same Dimension uses a secret algorithm to generate beautiful new colors.



63.0343, 21.7258, 7.9391



70.4626, 32.4336, 10.6636



69.5130, 7.5487, 17.9914



36.1655, 1.4948, 2.4890



29.9859, 51.5572, 17.7832



7.6930, 13.3476, 3.6302

Inverse Universe

The Inverse Universe completely reimagines the original color for something new.



63.0343, 21.7258, 7.9391



70.4626, 32.4336, 10.6636



70.9285, -11.2373, -12.5120



36.1655, 1.4948, 2.4890



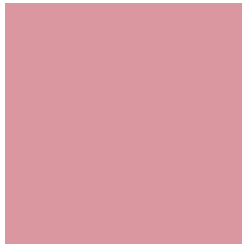
29.9859, 51.5572, 17.7832



7.6930, 13.3476, 3.6302

Previews

White Background



This preview shows how the HunterLab color 63.0328, 21.7285, 7.9380 looks on a white background.

Color Contrast Check

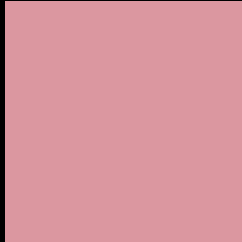
Large Text (above 18pt) WCAG AA × Fail

Any Text WCAG AA × Fail

Large Text (above 18pt) WCAG AAA × Fail

Any Text WCAG AAA × Fail

Black Background



This preview shows how the HunterLab color 63.0328, 21.7285, 7.9380 looks on a black background.

Color Contrast Check

Large Text (above 18pt) WCAG AA ✓ Pass

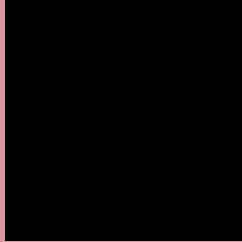
Any Text WCAG AA ✓ Pass

Large Text (above 18pt) WCAG AAA ✓ Pass

Any Text WCAG AAA ✓ Pass

If you want to check with other color combinations, try the [Color Contrast Checker](#).

HunterLab 63.0328, 21.7285, 7.9380 Background



This preview shows how black text looks on a background with the HunterLab color 63.0328, 21.7285, 7.9380.



This preview shows how white text looks on a background with the HunterLab color 63.0328, 21.7285,

7.9380.

Color Blindness Simulation

Color vision deficiency is a very complex topic, and I could not describe the different causes any better than Wikipedia does, so if you want to learn more, you should check out their [article about color blindness](#).

Dichromacy



Original Color

63.0328, 21.7285, 7.9380

Protanopia

63.2842, -2.2753, 3.3256

Deuteranopia

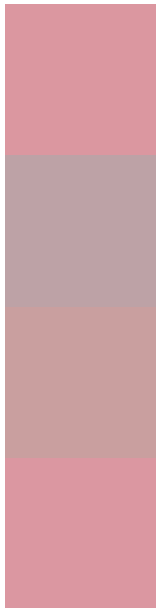
63.2192, 4.2330, 8.6922



Tritanopia

63.0888, 22.0127, 7.1362

Trichromacy



Original Color

63.0328, 21.7285, 7.9380

Protanomaly

62.7795, 6.1121, 4.7203

Deuteranomaly

63.0214, 10.7781, 8.1634

Tritanomaly

63.0607, 21.8701, 7.5385

Monochromacy



Original Color

63.0328, 21.7285, 7.9380

Achromatopsia

64.2295, -3.4271, 3.4897

Achromatomaly

63.4010, 5.4081, 4.5184

CSS Examples

Text

The CSS property to change the color of the text to HunterLab 63.0328, 21.7285, 7.9380 is called "color". The color property can be set on classes, ids or directly on the HTML element.

This example shows how text in the color `rgb(219, 151, 160)` looks like.

```
.text, #text, p{  
    color:rgb(219, 151, 160)  
}
```

If you want to add a text shadow in that color use the text-shadow property, you can generate a text shadow directly with our [CSS Text Shadow Generator](#).

Here you see how black text with a 4 pixel rgb(219, 151, 160) colored shadow looks like.

```
.shadow{ text-shadow: 4px 4px 2px rgb(219, 151, 160) }
```

Border

The CSS property to change the border of an element to HunterLab 63.0328, 21.7285, 7.9380 is called "border". The border property can be set on classes, ids or directly on the HTML element.

This example shows the color as border, it can be applied via the CSS property "border" or "border-color".

```
.border, #border, table{ border:4px solid rgb(219, 151, 160) }
```


If only the border color should be changed use the property `border-color`.

```
.border{ border-color:rgb(219, 151, 160) }
```

If you want to add a box shadow in that color use:

Here you see how a box with a 4 pixel `rgb(219, 151, 160)` colored shadow looks like.

```
.boxshadow{ -moz-box-shadow:4px 4px 4px  
4px rgb(219, 151, 160); -webkit-box-  
shadow:4px 4px 4px 4px rgb(219, 151, 160);  
box-shadow:4px 4px 4px 4px rgb(219, 151,  
160) }
```

Background

The CSS property to change the background color of an element to HunterLab 63.0328, 21.7285, 7.9380 is called "background". The background property can be set on classes, ids or directly on the HTML element.

```
.background, #background, body{  
background: rgb(219, 151, 160) }
```

If only the background color should be changed can be used:

```
.background{ background-color: rgb(219,  
151, 160) }
```

This example shows the color as background, it is applied via the CSS property "background".

To optimize and compress your CSS code, you can use our [online CSS compressor and optimizer](#) based on csstidy. If you want to create a linear or radial gradient as background or border, check our [CSS Gradient Generator](#).

Hey! You found this booklet interesting? Support Converting Colors with the new Membership Option!

The pro membership hides all ads, plus gives you double the colors in the color bucket, and more awesome pro features!

[Learn more, Memberships starting at \\$2.50/m!](#)

**Follow me
on Twitter!**

@ConvertingColor