

Converting Colors

HunterLab(63.1738, 3.9778,
11.3592)

Have a look what the booklet for
HunterLab(63.1738, 3.9778,
11.3592) contains.

HunterLab(63.2390, 3.9291, 11.5865)	3
<i>Conversions</i>	4
<i>Details</i>	6
<i>Harmonies</i>	12
<i>Previews</i>	24
<i>Color Blindness Simulation</i>	28
<i>CSS Examples</i>	31

Color

**HunterLab(63.2390, 3.9291,
11.5865)**

Conversions

Conversions Part 1

Format	Color
Hex	C0A497
RGB	192, 164, 151
RGB Percent	75%, 64%, 59%
CMY	0.2471, 0.3568, 0.4078
CMYK	0.00, 0.15, 0.21, 0.25
HSL	19°, 25%, 67%
HSV	19°, 21%, 75%
XYZ	40.5996, 39.9917, 34.8575
YIQ	170.8900, 20.8610, 1.8930

Conversions

Conversions Part 2

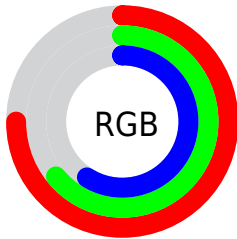
Format	Color
RYB	192, 170, 151
Decimal	12625047
CIELab	69.46, 8.18, 10.53
CIElCh	69, 13.336, 52.180
Yxy	39.9935, 0.3517, 0.3464
Android (android.graphics.Color)	4290815127 (0xFFC0A497)
YUV	170.8900, -9.8058, 18.5135
Hunter-Lab	63.2390, 3.9291, 11.5865

Details

The HunterLab color $63.2390, 3.9291, 11.5865$ is a light color, and the websafe version is hex $CC9999$. A complement of this color would be $65.2872, -9.2732, -5.2211$, and the grayscale version is $63.8042, -3.4044, 3.4666$.

A 20% lighter version of the original color is $86.7240, 3.4621, 14.0128$, and $42.3222, 4.2815, 9.2634$ is the 20% darker color. If you saturate the color by 10%, you get $59.1322, 8.0254, 14.7609$, and if you desaturate by 10%, it is $67.5324, 0.1216, 8.1389$.

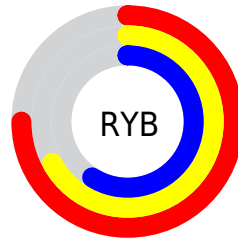
Distribution



Red (75%)

Green (64%)

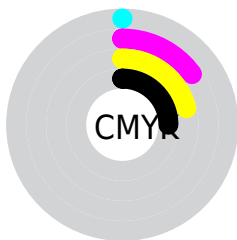
Blue (59%)



Red (75%)

Yellow (67%)

Blue (59%)

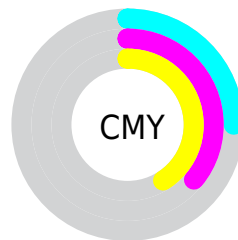


Cyan (0%)

Magenta (15%)

Yellow (21%)

Black (25%)



Cyan (25%)

Magenta (36%)

Yellow (41%)

Brightness & Saturation Gradients

These gradients show how the HunterLab color 63.2390, 3.9291, 11.5865 changes by changing the brightness by 10 percent. The first figure shows a shift by +10% for each color and the second figure -10%.

Similar to the brightness gradients but the following saturation gradients show a change of the HunterLab color 63.2390, 3.9291, 11.5865 by changing the saturation by 10% instead.

■ 63.2390, 3.9291,
11.5865

■ 63.2390, 3.9291,
11.5865

186.0366, 0.4124,
22.2410

■ 52.4724, 4.0816,
10.4360

■ 86.6912, 3.4505,
13.8931

■ 42.3961, 4.1719,
9.2782

■ 99.3089, 3.1379,
15.0542

■ 33.0629, 4.1891,
8.1051

112.4855, 2.7806,
16.2238

■ 24.5373, 4.1212,
6.9023

126.1982, 2.3816,
17.4034

■ 16.9049, 3.9503,
5.6447

140.4269, 1.9433,
18.5942

■ 10.2855, 3.6485,
4.8688

155.1535, 1.4678,

0.0000, INF, NaN

19.7970

0.0000, NaN, NaN

170.3617, 0.9569,
21.0125

0.0000, NaN, NaN

■ 63.2390, 3.9291,
11.5865

■ 63.2390, 3.9291,
11.5865

■ 59.1322, 8.0254,
14.7609

■ 67.5324, 0.1216,
8.1389

■ 55.2311, 12.4343,
17.6060

■ 71.9881, -3.4145,
4.4587

■ 51.5641, 17.1597,
20.0590

■ 76.5905, -6.7069,
0.5814

■ 48.1619, 22.1866,
22.0463

■ 81.3252, -9.7809,
-3.4650

■ 45.0584, 27.4674,
23.4894

■ 86.1797, -12.6603,
-7.6583

■ 42.2890, 32.9075,
24.3166

■ 90.7353, -17.6564,
-6.2189

■ 39.8879, 38.3523,
24.4860

■ 94.8401, -23.7796,
-1.1210

■ 38.1220, 42.8602,
24.2409

Harmonies

Analogous

The Analogous color harmony consists of three colors that are next to each other on the color wheel.



63.2404, 7.7781, 7.4857



63.2390, 3.9291, 11.5865



63.2404, -1.7845, 13.4687

Triad

The Triadic color harmony groups three colors that are evenly spaced from another and form a triangle on the color wheel.



63.2404, 3.9270, 11.5875



63.2404, -14.5127, 4.9320



63.2404, 1.0817, -7.7062

Complementary

The Complementary color scheme is a pair of colors which are on the opposite of each other on the color wheel.



63.2390, 3.9291, 11.5865



65.2872, -9.2732, -5.2211

Split Complementary

Split-complementary colors differ from the complementary color scheme. The scheme consists of three colors, the original color and two neighbors of the complement color.



63.2404, -4.9553, -8.5532



63.2390, 3.9291, 11.5865



63.2404, -13.8102, -0.8869

Square

The Square scheme is like the rectangle color scheme, but the four colors are evenly spaced on the color wheel.



63.2404, 3.9270, 11.5875



63.2404, -12.3217, 9.8690



63.2404, -10.3653, -5.9548



63.2404, 6.0927, -3.7386

Rectangle

The Rectangle color scheme consists of four colors that form a rectangle on the color wheel.



63.2390, 3.9291, 11.5865



63.2404, -5.8175, 13.3471



63.2404, -10.3653, -5.9548



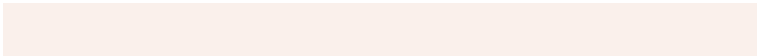
63.2404, -0.9004, -8.3795

Sweetspot

The Sweet Spot groups the original color and five complimentary colors.



63.2404, 3.9270, 11.5875



94.0316, -2.3819, 8.3868



60.4942, 14.9471, -4.2699



43.3708, -0.9583, 4.0354



98.8636, -5.2751, 5.3714



45.2661, -2.4153, 2.4594

Same Dimension

The Same Dimension uses a secret algorithm to generate beautiful new colors.



63.2404, 3.9270, 11.5875



82.2943, 8.0282, 17.8109



69.2266, -6.2350, 17.4719



32.5387, -0.2850, 3.5332



31.4710, 34.5940, 19.9979



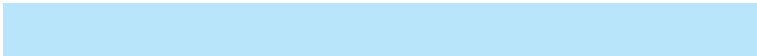
7.4441, 4.8651, 4.6722

Inverse Universe

The Inverse Universe completely reimagines the original color for something new.



65.2872, -9.2732, -5.2211



85.6747, -13.8189, -9.9821



59.1743, 0.7940, -13.4901



32.9730, -3.0779, -0.0278



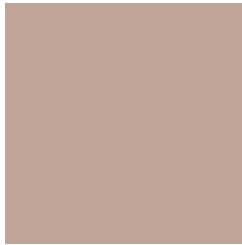
36.9426, -6.9310, -31.2131



8.4207, -2.5298, -5.0641

Previews

White Background



This preview shows how the HunterLab color 63.2390, 3.9291, 11.5865 looks on a white background.

Color Contrast Check

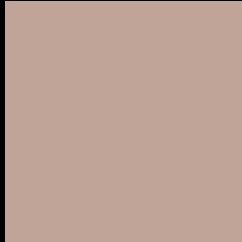
Large Text (above 18pt) WCAG AA × Fail

Any Text WCAG AA × Fail

Large Text (above 18pt) WCAG AAA × Fail

Any Text WCAG AAA × Fail

Black Background



This preview shows how the HunterLab color 63.2390, 3.9291, 11.5865 looks on a black background.

Color Contrast Check

Large Text (above 18pt) WCAG AA ✓ Pass

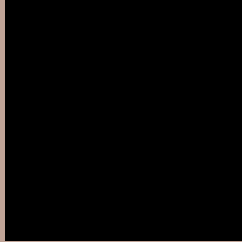
Any Text WCAG AA ✓ Pass

Large Text (above 18pt) WCAG AAA ✓ Pass

Any Text WCAG AAA ✓ Pass

If you want to check with other color combinations, try the [Color Contrast Checker](#).

HunterLab 63.2390, 3.9291, 11.5865 Background



This preview shows how black text looks on a background with the HunterLab color 63.2390, 3.9291, 11.5865.



This preview shows how white text looks on a background with the HunterLab color 63.2390, 3.9291,

Color Blindness Simulation

Color vision deficiency is a very complex topic, and I could not describe the different causes any better than Wikipedia does, so if you want to learn more, you should check out their [article about color blindness](#).

Dichromacy



Original Color

63.2390, 3.9291, 11.5865

Protanopia

63.2899, -3.1547, 10.3040

Deuteranopia

63.3425, 4.2768, 11.7012



Tritanopia

63.3316, 9.7826, 2.1838

Trichromacy



Original Color

63.2390, 3.9291, 11.5865

Protanomaly

63.1525, -0.6798, 10.6086

Deuteranomaly

63.3425, 4.2768, 11.7012

Tritanomaly

63.2666, 7.6692, 5.7590

Monochromacy



Original Color

63.2390, 3.9291, 11.5865

Achromatopsia

63.8154, -3.4050, 3.4672

Achromatomaly

63.4581, -0.5227, 6.2784

CSS Examples

Text

The CSS property to change the color of the text to HunterLab 63.2390, 3.9291, 11.5865 is called "color". The color property can be set on classes, ids or directly on the HTML element.

This example shows how text in the color `rgb(192, 164, 151)` looks like.

```
.text, #text, p{  
    color:rgb(192, 164, 151)  
}
```

If you want to add a text shadow in that color use the text-shadow property, you can generate a text shadow directly with our [CSS Text Shadow Generator](#).

Here you see how black text with a 4 pixel rgb(192, 164, 151) colored shadow looks like.

```
.shadow{ text-shadow: 4px 4px 2px rgb(192, 164, 151) }
```

Border

The CSS property to change the border of an element to HunterLab 63.2390, 3.9291, 11.5865 is called "border". The border property can be set on classes, ids or directly on the HTML element.

This example shows the color as border, it can be applied via the CSS property "border" or "border-color".

```
.border, #border, table{ border:4px solid rgb(192, 164, 151) }
```


If only the border color should be changed use the property `border-color`.

```
.border{ border-color:rgb(192, 164, 151) }
```

If you want to add a box shadow in that color use:

Here you see how a box with a 4 pixel `rgb(192, 164, 151)` colored shadow looks like.

```
.boxshadow{ -moz-box-shadow:4px 4px 4px  
4px rgb(192, 164, 151); -webkit-box-  
shadow:4px 4px 4px 4px rgb(192, 164, 151);  
box-shadow:4px 4px 4px 4px rgb(192, 164,  
151) }
```

Background

The CSS property to change the background color of an element to HunterLab 63.2390, 3.9291, 11.5865 is called "background". The background property can be set on classes, ids or directly on the HTML element.

```
.background, #background, body{  
background: rgb(192, 164, 151) }
```

If only the background color should be changed can be used:

```
.background{ background-color: rgb(192,  
164, 151) }
```

This example shows the color as background, it is applied via the CSS property "background".

To optimize and compress your CSS code, you can use our [online CSS compressor and optimizer](#) based on csstidy. If you want to create a linear or radial gradient as background or border, check our [CSS Gradient Generator](#).

Hey! You found this booklet interesting? Support Converting Colors with the new Membership Option!

The pro membership hides all ads, plus gives you double the colors in the color bucket, and more awesome pro features!

[Learn more, Memberships starting at \\$2.50/m!](#)

**Follow me
on Twitter!**

@ConvertingColor