

Converting Colors

HunterLab(63.1745, 1.6852,
15.7477)

Have a look what the booklet for
HunterLab(63.1745, 1.6852,
15.7477) contains.

HunterLab(63.1507, 1.6295, 15.6475)	3
<i>Conversions</i>	4
<i>Details</i>	6
<i>Harmonies</i>	12
<i>Previews</i>	24
<i>Color Blindness Simulation</i>	28
<i>CSS Examples</i>	31

Color

**HunterLab(63.1507, 1.6295,
15.6475)**

Conversions

Conversions Part 1

Format	Color
Hex	BFA58C
RGB	191, 165, 140
RGB Percent	75%, 65%, 55%
CMY	0.2510, 0.3529, 0.4510
CMYK	0.00, 0.14, 0.27, 0.25
HSL	29°, 28%, 65%
HSV	29°, 27%, 75%
XYZ	39.6746, 39.8801, 30.4176
YIQ	169.9240, 23.5210, -2.2630

Conversions

Conversions Part 2

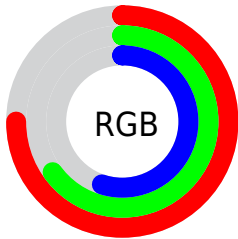
Format	Color
R_{YB}	191, 189, 140
Decimal	12559756
CIE _{Lab}	69.39, 5.64, 16.47
CIE _{LCh}	69, 17.410, 71.103
Yxy	39.8819, 0.3608, 0.3626
Android (android.graphics.Color)	4290749836 (0xFFBFA58C)
YUV	169.9240, -14.7525, 18.4837
Hunter-Lab	63.1507, 1.6295, 15.6475

Details

The HunterLab color $63.1507, 1.6295, 15.6475$ is a light color, and the websafe version is hex $CC9999$. A complement of this color would be $60.5050, -6.0052, -11.1229$, and the grayscale version is $63.4237, -3.3841, 3.4459$.

A 20% lighter version of the original color is $86.6244, 0.9801, 18.4612$, and $42.2691, 2.3253, 12.5188$ is the 20% darker color. If you saturate the color by 10%, you get $59.9890, 4.2136, 19.1916$, and if you desaturate by 10%, it is $66.4396, -0.6566, 11.6159$.

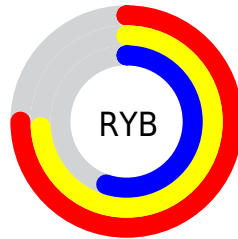
Distribution



Red (75%)

Green (65%)

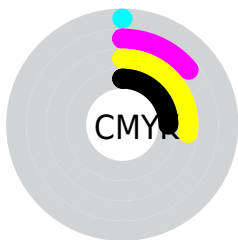
Blue (55%)



Red (75%)

Yellow (74%)

Blue (55%)

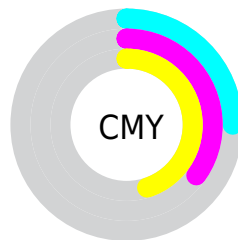


Cyan (0%)

Magenta (14%)

Yellow (27%)

Black (25%)



Cyan (25%)

Magenta (35%)

Yellow (45%)

Brightness & Saturation Gradients

These gradients show how the HunterLab color 63.1507, 1.6295, 15.6475 changes by changing the brightness by 10 percent. The first figure shows a shift by +10% for each color and the second figure -10%.

Similar to the brightness gradients but the following saturation gradients show a change of the HunterLab color 63.1507, 1.6295, 15.6475 by changing the saturation by 10% instead.

■ 63.1507, 1.6295,
15.6475

■ 63.1507, 1.6295,
15.6475

185.9101, -2.8190,
28.6838

■ 52.3894, 1.9098,
14.1496

■ 86.5931, 0.9142,
18.5803

■ 42.3188, 2.1359,
12.6144

■ 99.2063, 0.4911,
20.0276

■ 32.9918, 2.2985,
11.0256

■ 112.3785, 0.0278,
21.4690

■ 24.4730, 2.3877,
9.3565

126.0871, -0.4733,
22.9079

■ 16.8480, 2.3890,
7.5623

140.3117, -1.0103,
24.3469

■ 10.2374, 2.2791,
7.1661

155.0344, -1.5812,

0.0000, INF, NaN

25.7882

0.0000, NaN, NaN

170.2388, -2.1846,
27.2334

0.0000, NaN, NaN

■ 63.1507, 1.6295,
15.6475

■ 63.1507, 1.6295,
15.6475

■ 59.9890, 4.2136,
19.1916

■ 66.4396, -0.6566,
11.6159

■ 56.9614, 7.1188,
22.1933

■ 69.8413, -2.6580,
7.1430

■ 54.0811, 10.3548,
24.6001

■ 73.3482, -4.3976,
2.2742

■ 51.3610, 13.9241,
26.3613

■ 76.9520, -5.8962,
-2.9506

■ 48.8140, 17.8163,
27.4362

■ 80.6454, -7.1737,
-8.4962

■ 46.4526, 22.0008,
27.8060

■ 84.4219, -8.2490,
-14.3317

■ 44.2862, 26.4147,
27.5092

■ 87.5570, -13.1295,
-10.3421

■ 43.6100, 27.8799,
27.3604

■ 90.7372, -18.0279,
-6.2228

■ 93.9743, -22.8628,
-2.1834

Harmonies

Analogous

The Analogous color harmony consists of three colors that are next to each other on the color wheel.



63.1521, 8.4980, 12.2266



63.1507, 1.6295, 15.6475



63.1521, -6.2746, 16.0479

Triad

The Triadic color harmony groups three colors that are evenly spaced from another and form a triangle on the color wheel.



63.1521, 1.6274, 15.6484



63.1521, -17.6120, 0.5881



63.1521, 6.9374, -8.4621

Complementary

The Complementary color scheme is a pair of colors which are on the opposite of each other on the color wheel.



63.1507, 1.6295, 15.6475



60.5050, -6.0052, -11.1229

Split Complementary

Split-complementary colors differ from the complementary color scheme. The scheme consists of three colors, the original color and two neighbors of the complement color.



63.1521, -0.4181, -12.4672



63.1507, 1.6295, 15.6475



63.1521, -14.4272, -6.8302

Square

The Square scheme is like the rectangle color scheme, but the four colors are evenly spaced on the color wheel.



63.1521, 1.6274, 15.6484



63.1521, -17.1247, 7.9450



63.1521, -8.2225, -11.8357



63.1521, 11.6664, -1.4288

Rectangle

The Rectangle color scheme consists of four colors that form a rectangle on the color wheel.



63.1507, 1.6295, 15.6475



63.1521, -11.0375, 14.6108



63.1521, -8.2225, -11.8357



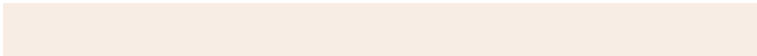
63.1521, 4.6753, -10.2441

Sweetspot

The Sweet Spot groups the original color and five complimentary colors.



63.1521, 1.6274, 15.6484



92.8095, -3.1973, 10.4465



57.0956, 18.1938, -2.1379



43.1629, -1.3143, 5.3341



98.8636, -5.2751, 5.3714



45.2661, -2.4153, 2.4594

Same Dimension

The Same Dimension uses a secret algorithm to generate beautiful new colors.



63.1521, 1.6274, 15.6484



82.0366, 4.1364, 23.7791



70.6130, -10.6640, 22.4918



32.0747, -1.0028, 3.8928



35.5795, 22.0712, 22.3103



7.9174, 2.4665, 4.9218

Inverse Universe

The Inverse Universe completely reimagines the original color for something new.



60.5050, -6.0052, -11.1229



77.7567, -8.1577, -19.5429



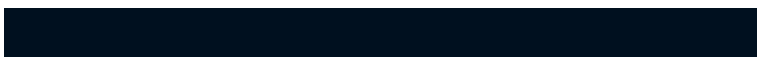
53.2383, 6.4879, -21.9745



31.6349, -2.2782, -0.5484



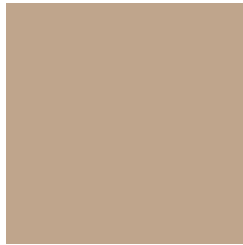
28.8025, 5.9425, -48.8289



6.7499, -0.6665, -6.9979

Previews

White Background



This preview shows how the HunterLab color 63.1507, 1.6295, 15.6475 looks on a white background.

Color Contrast Check

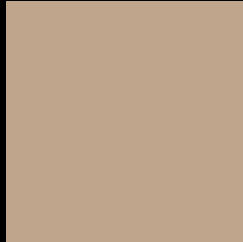
Large Text (above 18pt) WCAG AA × Fail

Any Text WCAG AA × Fail

Large Text (above 18pt) WCAG AAA × Fail

Any Text WCAG AAA × Fail

Black Background



This preview shows how the HunterLab color 63.1507, 1.6295, 15.6475 looks on a black background.

Color Contrast Check

Large Text (above 18pt) WCAG AA ✓ Pass

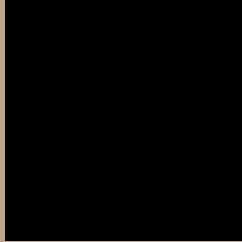
Any Text WCAG AA ✓ Pass

Large Text (above 18pt) WCAG AAA ✓ Pass

Any Text WCAG AAA ✓ Pass

If you want to check with other color combinations, try the [Color Contrast Checker](#).

HunterLab 63.1507, 1.6295, 15.6475 Background



This preview shows how black text looks on a background with the HunterLab color 63.1507, 1.6295, 15.6475.



This preview shows how white text looks on a background with the HunterLab color 63.1507, 1.6295,

15.6475.

Color Blindness Simulation

Color vision deficiency is a very complex topic, and I could not describe the different causes any better than Wikipedia does, so if you want to learn more, you should check out their [article about color blindness](#).

Dichromacy



Original Color

63.1507, 1.6295, 15.6475

Protanopia

63.1764, -4.1510, 14.8395

Deuteranopia

63.1059, 4.3928, 15.6518



Tritanopia

63.0562, 10.2987, 1.8614

Trichromacy



Original Color

63.1507, 1.6295, 15.6475

Protanomaly

63.2421, -2.4629, 15.3018

Deuteranomaly

63.1773, 3.1818, 15.7009

Tritanomaly

63.1532, 7.0670, 7.3828

Monochromacy



Original Color

63.1507, 1.6295, 15.6475

Achromatopsia

63.4017, -3.3830, 3.4447

Achromatomaly

63.2246, -1.6062, 8.1709

CSS Examples

Text

The CSS property to change the color of the text to HunterLab 63.1507, 1.6295, 15.6475 is called "color". The color property can be set on classes, ids or directly on the HTML element.

This example shows how text in the color `rgb(191, 165, 140)` looks like.

```
.text, #text, p{  
    color:rgb(191, 165, 140)  
}
```

If you want to add a text shadow in that color use the text-shadow property, you can generate a text shadow directly with our [CSS Text Shadow Generator](#).

Here you see how black text with a 4 pixel rgb(191, 165, 140) colored shadow looks like.

```
.shadow{ text-shadow: 4px 4px 2px rgb(191, 165, 140) }
```

Border

The CSS property to change the border of an element to HunterLab 63.1507, 1.6295, 15.6475 is called "border". The border property can be set on classes, ids or directly on the HTML element.

This example shows the color as border, it can be applied via the CSS property "border" or "border-color".

```
.border, #border, table{ border:4px solid rgb(191, 165, 140) }
```


If only the border color should be changed use the property `border-color`.

```
.border{ border-color:rgb(191, 165, 140) }
```

If you want to add a box shadow in that color use:

Here you see how a box with a 4 pixel `rgb(191, 165, 140)` colored shadow looks like.

```
.boxshadow{ -moz-box-shadow:4px 4px 4px 4px rgb(191, 165, 140); -webkit-box-shadow:4px 4px 4px 4px rgb(191, 165, 140); box-shadow:4px 4px 4px 4px rgb(191, 165, 140) }
```

Background

The CSS property to change the background color of an element to HunterLab 63.1507, 1.6295, 15.6475 is called "background". The background property can be set on classes, ids or directly on the HTML element.

```
.background, #background, body{  
background: rgb(191, 165, 140) }
```

If only the background color should be changed can be used:

```
.background{ background-color: rgb(191,  
165, 140) }
```

This example shows the color as background, it is applied via the CSS property "background".

To optimize and compress your CSS code, you can use our [online CSS compressor and optimizer](#) based on csstidy. If you want to create a linear or radial gradient as background or border, check our [CSS Gradient Generator](#).

Hey! You found this booklet interesting? Support Converting Colors with the new Membership Option!

The pro membership hides all ads, plus gives you double the colors in the color bucket, and more awesome pro features!

[Learn more, Memberships starting at \\$2.50/m!](#)

**Follow me
on Twitter!**

@ConvertingColor