

Converting Colors

HunterLab(63.1893, 8.6992,
7.0456)

Have a look what the booklet for
HunterLab(63.1893, 8.6992, 7.0456)
contains.

HunterLab(63.2208, 8.7736, 7.0529)	3
<i>Conversions</i>	4
<i>Details</i>	6
<i>Harmonies</i>	12
<i>Previews</i>	24
<i>Color Blindness Simulation</i>	28
<i>CSS Examples</i>	31

Color

**HunterLab(63.2208, 8.7736,
7.0529)**

Conversions

Conversions Part 1

Format	Color
Hex	C5A1A2
RGB	197, 161, 162
RGB Percent	77%, 63%, 64%
CMY	0.2274, 0.3686, 0.3647
CMYK	0.00, 0.18, 0.18, 0.23
HSL	358°, 24%, 70%
HSV	358°, 18%, 77%
XYZ	42.2924, 39.9687, 39.6681
YIQ	171.8780, 21.1350, 7.9430

Conversions

Conversions Part 2

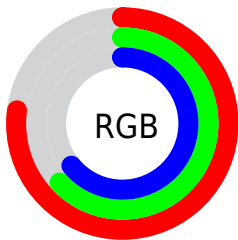
Format	Color
RYB	197, 161, 162
Decimal	12951970
CIELab	69.45, 13.41, 4.48
CIELCh	69, 14.140, 18.479
Yxy	39.9705, 0.3469, 0.3278
Android (android.graphics.Color)	4291142050 (0xFFC5A1A2)
YUV	171.8780, -4.8699, 22.0320
Hunter-Lab	63.2208, 8.7736, 7.0529

Details

The HunterLab color $63.2208, 8.7736, 7.0529$ is a light color, and the websafe version is hex $CC9999$. A complement of this color would be $71.7608, -14.5682, 0.8126$, and the grayscale version is $64.1935, -3.4252, 3.4878$.

A 20% lighter version of the original color is $86.7135, 8.7185, 8.7002$, and $42.3116, 8.6869, 5.5529$ is the 20% darker color. If you saturate the color by 10%, you get $57.4358, 16.1620, 8.9121$, and if you desaturate by 10%, it is $69.3836, 1.6713, 5.3550$.

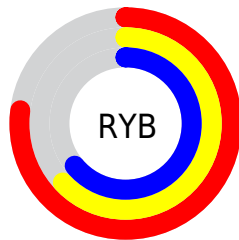
Distribution



Red (77%)

Green (63%)

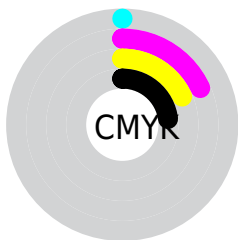
Blue (64%)



Red (77%)

Yellow (63%)

Blue (64%)

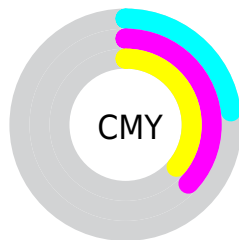


Cyan (0%)

Magenta (18%)

Yellow (18%)

Black (23%)



Cyan (23%)

Magenta (37%)

Yellow (36%)

Brightness & Saturation Gradients

These gradients show how the HunterLab color 63.2208, 8.7736, 7.0529 changes by changing the brightness by 10 percent. The first figure shows a shift by +10% for each color and the second figure -10%.

Similar to the brightness gradients but the following saturation gradients show a change of the HunterLab color 63.2208, 8.7736, 7.0529 by changing the saturation by 10% instead.

63.2208, 8.7736,
7.0529

63.2208, 8.7736,
7.0529

186.0105, 7.1533,
15.3837

52.4553, 8.6681,
6.2361

86.6710, 8.7743,
8.7543

42.3802, 8.4856,
5.4390

99.2877, 8.6861,
9.6373

33.0482, 8.2126,
4.6609

112.4634, 8.5446,
10.5420

24.5241, 7.8333,
3.8990

126.1753, 8.3536,
11.4682

16.8931, 7.3259,
3.1470

140.4032, 8.1164,
12.4158

10.2756, 6.6588,
2.4292

155.1290, 7.8358,

0.0000, INF, NaN

13.3844

0.0000, NaN, NaN

170.3364, 7.5140,
14.3738

0.0000, NaN, NaN

■ 63.2208, 8.7736,
7.0529

■ 63.2208, 8.7736,
7.0529

■ 57.4358, 16.1620,
8.9121

■ 69.3836, 1.6713,
5.3550

■ 52.0961, 23.8061,
10.9324

■ 75.8627, -5.1459,
3.8008

■ 47.2915, 31.5842,
13.0945

■ 82.6142, -11.7069,
2.3736

■ 43.1252, 39.2411,
15.3352

■ 89.6022, -18.0456,
1.0553

■ 39.7074, 46.3416,
17.5302

■ 95.1895, -22.4980,
-0.6662

■ 37.1346, 52.2890,
19.4916

■ 35.4553, 56.4816,
21.0077

■ 34.5883, 58.7399,
21.9102

■ 34.4708, 59.0669,
22.0055

Harmonies

Analogous

The Analogous color harmony consists of three colors that are next to each other on the color wheel.



63.2222, 9.1888, 1.0490



63.2208, 8.7736, 7.0529



63.2222, 5.0224, 11.6228

Triad

The Triadic color harmony groups three colors that are evenly spaced from another and form a triangle on the color wheel.



63.2222, 8.7715, 7.0540



63.2222, -12.3627, 10.7462



63.2222, -5.8252, -9.1902

Complementary

The Complementary color scheme is a pair of colors which are on the opposite of each other on the color wheel.



63.2208, 8.7736, 7.0529



71.7608, -14.5682, 0.8126

Split Complementary

Split-complementary colors differ from the complementary color scheme. The scheme consists of three colors, the original color and two neighbors of the complement color.



63.2222, -11.3591, -6.0046



63.2208, 8.7736, 7.0529



63.2222, -15.0317, 5.7437

Square

The Square scheme is like the rectangle color scheme, but the four colors are evenly spaced on the color wheel.



63.2222, 8.7715, 7.0540



63.2222, -7.2449, 13.6032



63.2222, -14.6718, -0.3979



63.2222, 0.5866, -8.7495

Rectangle

The Rectangle color scheme consists of four colors that form a rectangle on the color wheel.



63.2208, 8.7736, 7.0529



63.2222, 1.2191, 13.4266



63.2222, -14.6718, -0.3979



63.2222, -7.8450, -8.4960

Sweetspot

The Sweet Spot groups the original color and five complimentary colors.



63.2222, 8.7715, 7.0540



95.5826, -0.7182, 6.4819



64.2119, 14.2154, -8.9587



43.9374, -0.0285, 3.0688

0.0000, NaN, NaN



46.2646, -2.4686, 2.5136

Same Dimension

The Same Dimension uses a secret algorithm to generate beautiful new colors.



63.2222, 8.7715, 7.0540



81.3954, 15.7142, 10.4248



67.9751, 0.1066, 12.4758



32.6215, 1.1634, 2.6300



27.9599, 47.9176, 17.7926



6.0980, 10.4785, 3.6652

Inverse Universe

The Inverse Universe completely reimagines the original color for something new.



63.2222, 8.7715, 7.0540



81.3954, 15.7142, 10.4248



66.5832, -6.2322, -6.1185



32.6215, 1.1634, 2.6300



27.9599, 47.9176, 17.7926



6.0980, 10.4785, 3.6652

Previews

White Background



This preview shows how the HunterLab color 63.2208, 8.7736, 7.0529 looks on a white background.

Color Contrast Check

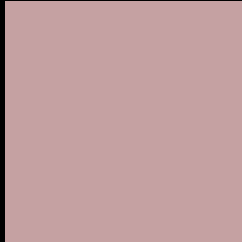
Large Text (above 18pt) WCAG AA × Fail

Any Text WCAG AA × Fail

Large Text (above 18pt) WCAG AAA × Fail

Any Text WCAG AAA × Fail

Black Background



This preview shows how the HunterLab color 63.2208, 8.7736, 7.0529 looks on a black background.

Color Contrast Check

Large Text (above 18pt) WCAG AA ✓ Pass

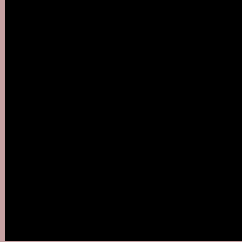
Any Text WCAG AA ✓ Pass

Large Text (above 18pt) WCAG AAA ✓ Pass

Any Text WCAG AAA ✓ Pass

If you want to check with other color combinations, try the [Color Contrast Checker](#).

HunterLab 63.2208, 8.7736, 7.0529 Background



This preview shows how black text looks on a background with the HunterLab color 63.2208, 8.7736, 7.0529.



This preview shows how white text looks on a background with the HunterLab color 63.2208, 8.7736,

Color Blindness Simulation

Color vision deficiency is a very complex topic, and I could not describe the different causes any better than Wikipedia does, so if you want to learn more, you should check out their [article about color blindness](#).

Dichromacy



Original Color

63.2208, 8.7736, 7.0529

Protanopia

63.3465, -2.2951, 5.2274

Deuteranopia

63.2004, 4.3354, 7.3878



Tritanopia

63.0719, 11.6958, 2.3799

Trichromacy



Original Color

63.2208, 8.7736, 7.0529

Protanomaly

63.1935, 1.6045, 5.5691

Deuteranomaly

63.2250, 5.8672, 7.4421

Tritanomaly

63.2254, 10.5495, 4.4040

Monochromacy



Original Color

63.2208, 8.7736, 7.0529

Achromatopsia

64.2295, -3.4271, 3.4897

Achromatomaly

63.7622, 0.7491, 4.8556

CSS Examples

Text

The CSS property to change the color of the text to HunterLab 63.2208, 8.7736, 7.0529 is called "color". The color property can be set on classes, ids or directly on the HTML element.

This example shows how text in the color `rgb(197, 161, 162)` looks like.

```
.text, #text, p{  
    color:rgb(197, 161, 162)  
}
```

If you want to add a text shadow in that color use the text-shadow property, you can generate a text shadow directly with our [CSS Text Shadow Generator](#).

Here you see how black text with a 4 pixel rgb(197, 161, 162) colored shadow looks like.

```
.shadow{ text-shadow: 4px 4px 2px rgb(197, 161, 162) }
```

Border

The CSS property to change the border of an element to HunterLab 63.2208, 8.7736, 7.0529 is called "border". The border property can be set on classes, ids or directly on the HTML element.

This example shows the color as border, it can be applied via the CSS property "border" or "border-color".

```
.border, #border, table{ border:4px solid rgb(197, 161, 162) }
```


If only the border color should be changed use the property `border-color`.

```
.border{ border-color:rgb(197, 161, 162) }
```

If you want to add a box shadow in that color use:

Here you see how a box with a 4 pixel `rgb(197, 161, 162)` colored shadow looks like.

```
.boxshadow{ -moz-box-shadow:4px 4px 4px  
4px rgb(197, 161, 162); -webkit-box-  
shadow:4px 4px 4px 4px rgb(197, 161, 162);  
box-shadow:4px 4px 4px 4px rgb(197, 161,  
162) }
```

Background

The CSS property to change the background color of an element to HunterLab 63.2208, 8.7736, 7.0529 is called "background". The background property can be set on classes, ids or directly on the HTML element.

```
.background, #background, body{  
background: rgb(197, 161, 162) }
```

If only the background color should be changed can be used:

```
.background{ background-color: rgb(197,  
161, 162) }
```

This example shows the color as background, it is applied via the CSS property "background".

To optimize and compress your CSS code, you can use our [online CSS compressor and optimizer](#) based on csstidy. If you want to create a linear or radial gradient as background or border, check our [CSS Gradient Generator](#).

Hey! You found this booklet interesting? Support Converting Colors with the new Membership Option!

The pro membership hides all ads, plus gives you double the colors in the color bucket, and more awesome pro features!

[Learn more, Memberships starting at \\$2.50/m!](#)

**Follow me
on Twitter!**

@ConvertingColor