

# Converting Colors

HunterLab(63.2188, 1.6611,  
8.6462)

Have a look what the booklet for  
HunterLab(63.2188, 1.6611, 8.6462)  
contains.

<b>HunterLab(63.2893, 1.5383, 8.7218)</b> .....	3
<i><b>Conversions</b></i> .....	4
<i><b>Details</b></i> .....	6
<i><b>Harmonies</b></i> .....	12
<i><b>Previews</b></i> .....	24
<i><b>Color Blindness Simulation</b></i> .....	28
<i><b>CSS Examples</b></i> .....	31

# Color

**HunterLab(63.2893, 1.5383,  
8.7218)**

# Conversions

## Conversions Part 1

<b>Format</b>	<b>Color</b>
Hex	B9A69E
RGB	185, 166, 158
RGB Percent	73%, 65%, 62%
CMY	0.2745, 0.3490, 0.3804
CMYK	0.00, 0.10, 0.15, 0.27
HSL	18°, 16%, 67%
HSV	18°, 15%, 73%
XYZ	39.8154, 40.0554, 37.9807
YIQ	170.7690, 13.8920, 1.5400

# Conversions

## Conversions Part 2

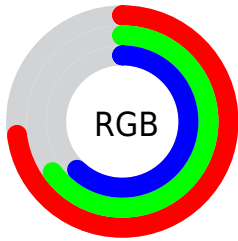
<b>Format</b>	<b>Color</b>
<b>RYB</b>	185, 169, 158
Decimal	12166814
CIELab	69.51, 5.54, 6.64
CIELCh	70, 8.651, 50.162
Yxy	40.0571, 0.3378, 0.3399
Android (android.graphics.Color)	4290356894 (0xFFB9A69E)
YUV	170.7690, -6.2951, 12.4806
Hunter-Lab	63.2893, 1.5383, 8.7218

# Details

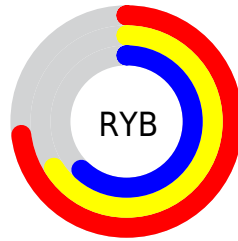
The HunterLab color  $63.2893, 1.5383, 8.7218$  is a light color, and the websafe version is hex  $999999$ . A complement of this color would be  $64.9733, -7.7146, -1.9832$ , and the grayscale version is  $63.7421, -3.4011, 3.4632$ .

A 20% lighter version of the original color is  $86.7282, 0.8220, 10.4208$ , and  $42.4284, 2.2641, 6.7459$  is the 20% darker color. If you saturate the color by 10%, you get  $59.1370, 5.4571, 11.8532$ , and if you desaturate by 10%, it is  $67.6146, -2.1192, 5.3809$ .

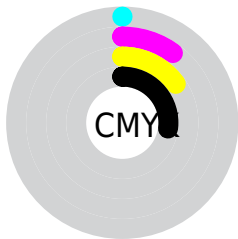
# Distribution



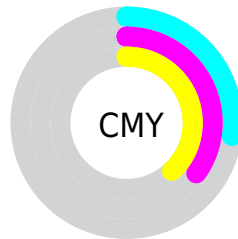
- Red (73%)
- Green (65%)
- Blue (62%)



- Red (73%)
- Yellow (66%)
- Blue (62%)



- Cyan (0%)
- Magenta (10%)
- Yellow (15%)
- Black (27%)



- Cyan (27%)
- Magenta (35%)
- Yellow (38%)

# Brightness & Saturation Gradients

These gradients show how the HunterLab color 63.2893, 1.5383, 8.7218 changes by changing the brightness by 10 percent. The first figure shows a shift by +10% for each color and the second figure -10%.

Similar to the brightness gradients but the following saturation gradients show a change of the HunterLab color 63.2893, 1.5383, 8.7218 by changing the saturation by 10% instead.



■ 63.2893, 1.5383,  
8.7218

■ 63.2893, 1.5383,  
8.7218

186.1087, -2.9500,  
17.8703

■ 52.5196, 1.8244,  
7.7883

■ 86.7471, 0.8129,  
10.6353

■ 42.4401, 2.0565,  
6.8654

■ 99.3673, 0.3851,  
11.6160

■ 33.1034, 2.2256,  
5.9500

112.5464, -0.0827,  
12.6139

■ 24.5740, 2.3219,  
5.0352

126.2615, -0.5882,  
13.6294

■ 16.9372, 2.3311,  
4.1088

140.4925, -1.1294,  
14.6627

■ 10.3130, 2.2303,  
3.2985

155.2213, -1.7044,

0.0000, INF, NaN

15.7139

0.0000, NaN, NaN

170.4316, -2.3117,  
16.7831

0.0000, NaN, NaN

■ 63.2893, 1.5383,  
8.7218

■ 63.2893, 1.5383,  
8.7218

■ 59.1370, 5.4571,  
11.8532

■ 67.6146, -2.1192,  
5.3809

■ 55.1751, 9.6636,  
14.7292

■ 72.0903, -5.5342,  
1.8617

■ 51.4305, 14.1684,  
17.2973

■ 76.7021, -8.7332,  
-1.8082

■ 47.9328, 18.9682,  
19.4929

■ 81.4368, -11.7402,  
-5.6076

■ 44.7150, 24.0332,  
21.2415

■ 86.2832, -14.5772,  
-9.5198

■ 41.8137, 29.2933,  
22.4647

■ 90.7178, -20.1571,  
-6.2854

■ 39.2658, 34.6237,  
23.0948

■ 94.3686, -25.5174,  
-1.7375

■ 37.1052, 39.8341,  
23.1025

■ 36.0991, 42.4771,  
22.9877

# Harmonies

## Analogous

The Analogous color harmony consists of three colors that are next to each other on the color wheel.



63.2907, 3.8747, 5.8743



63.2893, 1.5383, 8.7218



63.2907, -2.0834, 10.1300

# Triad

The Triadic color harmony groups three colors that are evenly spaced from another and form a triangle on the color wheel.



63.2907, 1.5364, 8.7228



63.2907, -10.6592, 4.6617



63.2907, -0.7532, -3.6854

# Complementary

The Complementary color scheme is a pair of colors which are on the opposite of each other on the color wheel.



63.2893, 1.5383, 8.7218



64.9733, -7.7146, -1.9832

# Split Complementary

Split-complementary colors differ from the complementary color scheme. The scheme consists of three colors, the original color and two neighbors of the complement color.



63.2907, -4.6671, -4.0592



63.2893, 1.5383, 8.7218



63.2907, -10.3228, 0.9155

# Square

The Square scheme is like the rectangle color scheme, but the four colors are evenly spaced on the color wheel.



63.2907, 1.5364, 8.7228



63.2907, -9.0821, 7.8817



63.2907, -8.1516, -2.3303



63.2907, 2.5305, -1.3379



# Rectangle

The Rectangle color scheme consists of four colors that form a rectangle on the color wheel.



63.2893, 1.5383, 8.7218



63.2907, -4.7089, 10.1237



63.2907, -8.1516, -2.3303



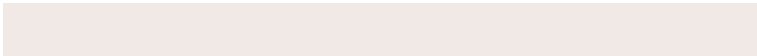
63.2907, -2.0409, -4.0513

# Sweetspot

The Sweet Spot groups the original color and five complimentary colors.



63.2907, 1.5364, 8.7228



90.7987, -3.0856, 6.9577



61.6092, 8.6718, -2.0908



41.9530, -1.2682, 3.3908



96.5975, -5.1542, 5.2483



43.2801, -2.3093, 2.3515



# Same Dimension

The Same Dimension uses a secret algorithm to generate beautiful new colors.



63.2907, 1.5364, 8.7228



82.6155, 3.9545, 13.2593



67.1444, -4.9712, 12.7228



30.7157, -0.1962, 3.2748



29.9760, 34.5092, 19.0752



6.5428, 4.1147, 4.1037



# Inverse Universe

The Inverse Universe completely reimagines the original color for something new.



64.9733, -7.7146, -1.9832



85.4242, -11.5020, -4.6188



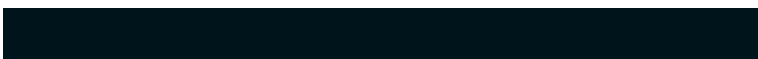
61.0489, -1.2639, -6.9810



31.2232, -2.9836, 0.0474



36.6289, -8.1634, -28.1606



7.5836, -2.5448, -3.9853



# Previews

## White Background



This preview shows how the HunterLab color 63.2893, 1.5383, 8.7218 looks on a white background.

## Color Contrast Check

Large Text (above 18pt) WCAG AA × Fail

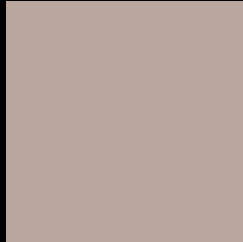
Any Text WCAG AA × Fail

Large Text (above 18pt) WCAG AAA × Fail

Any Text WCAG AAA × Fail



# Black Background



This preview shows how the HunterLab color 63.2893, 1.5383, 8.7218 looks on a black background.

## Color Contrast Check

Large Text (above 18pt) WCAG AA ✓ Pass

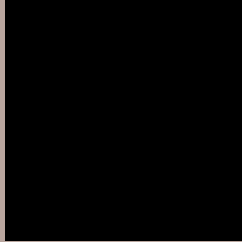
Any Text WCAG AA ✓ Pass

Large Text (above 18pt) WCAG AAA ✓ Pass

Any Text WCAG AAA ✓ Pass

If you want to check with other color combinations, try the [Color Contrast Checker](#).

# HunterLab 63.2893, 1.5383, 8.7218 Background



This preview shows how black text looks on a background with the HunterLab color 63.2893, 1.5383, 8.7218.



This preview shows how white text looks on a background with the HunterLab color 63.2893, 1.5383,



# Color Blindness Simulation

Color vision deficiency is a very complex topic, and I could not describe the different causes any better than Wikipedia does, so if you want to learn more, you should check out their [article about color blindness](#).

## Dichromacy



### Original Color

63.2893, 1.5383, 8.7218

### Protanopia

63.2677, -2.9082, 7.7675

### Deuteranopia

63.2192, 4.2330, 8.6922



## Tritanopia

63.1615, 6.5442, 0.4778

# Trichromacy



## Original Color

63.2893, 1.5383, 8.7218

## Protanomaly

63.3184, -1.2827, 8.2800

## Deuteranomaly

63.3011, 3.0487, 8.7612

## Tritanomaly

63.1305, 4.5620, 3.7279

# Monochromacy



## Original Color

63.2893, 1.5383, 8.7218

## Achromatopsia

63.8154, -3.4050, 3.4672

## Achromatomaly

63.5289, -1.6647, 5.4478

# CSS Examples

## Text

The CSS property to change the color of the text to HunterLab 63.2893, 1.5383, 8.7218 is called "color". The color property can be set on classes, ids or directly on the HTML element.

This example shows how text in the color `rgb(185, 166, 158)` looks like.

```
.text, #text, p{  
    color:rgb(185, 166, 158)  
}
```

If you want to add a text shadow in that color use the text-shadow property, you can generate a text shadow directly with our [CSS Text Shadow Generator](#).

Here you see how black text with a 4 pixel rgb(185, 166, 158) colored shadow looks like.

```
.shadow{ text-shadow: 4px 4px 2px rgb(185, 166, 158) }
```

## Border

The CSS property to change the border of an element to HunterLab 63.2893, 1.5383, 8.7218 is called "border".

The border property can be set on classes, ids or directly on the HTML element.

This example shows the color as border, it can be applied via the CSS property "border" or "border-color".

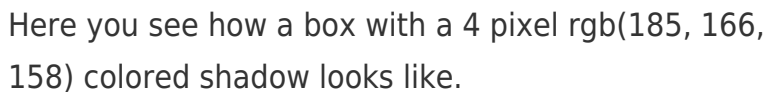
```
.border, #border, table{ border:4px solid rgb(185, 166, 158) }
```



If only the border color should be changed use the property `border-color`.

```
.border{ border-color:rgb(185, 166, 158) }
```

If you want to add a box shadow in that color use:



Here you see how a box with a 4 pixel `rgb(185, 166, 158)` colored shadow looks like.

```
.boxshadow{ -moz-box-shadow:4px 4px 4px  
4px rgb(185, 166, 158); -webkit-box-  
shadow:4px 4px 4px 4px rgb(185, 166, 158);  
box-shadow:4px 4px 4px 4px rgb(185, 166,  
158) }
```

# Background

The CSS property to change the background color of an element to HunterLab 63.2893, 1.5383, 8.7218 is called "background". The background property can be set on classes, ids or directly on the HTML element.

```
.background, #background, body{  
background: rgb(185, 166, 158) }
```

If only the background color should be changed can be used:

```
.background{ background-color: rgb(185,  
166, 158) }
```

This example shows the color as background, it is applied via the CSS property "background".

To optimize and compress your CSS code, you can use our [online CSS compressor and optimizer](#) based on csstidy. If you want to create a linear or radial gradient as background or border, check our [CSS Gradient Generator](#).

Hey! You found this booklet interesting? Support Converting Colors with the new Membership Option!

The pro membership hides all ads, plus gives you double the colors in the color bucket, and more awesome pro features!

**[Learn more, Memberships starting at \\$2.50/m!](#)**

**Follow me  
on Twitter!**

@ConvertingColor