

# Converting Colors

HunterLab(63.2450, 32.1447,  
1.5069)

Have a look what the booklet for  
HunterLab(63.2450, 32.1447,  
1.5069) contains.

<b>HunterLab(63.2697, 32.2200, 1.5442)</b> .....	3
<b><i>Conversions</i></b> .....	4
<b><i>Details</i></b> .....	6
<b><i>Harmonies</i></b> .....	12
<b><i>Previews</i></b> .....	24
<b><i>Color Blindness Simulation</i></b> .....	28
<b><i>CSS Examples</i></b> .....	31

# Color

**HunterLab(63.2697, 32.2200,  
1.5442)**

# Conversions

## Conversions Part 1

<b>Format</b>	<b>Color</b>
Hex	E790AF
RGB	231, 144, 175
RGB Percent	91%, 56%, 69%
CMY	0.0941, 0.4353, 0.3137
CMYK	0.00, 0.38, 0.24, 0.09
HSL	339°, 64%, 74%
HSV	339°, 38%, 91%
XYZ	50.6661, 40.0305, 45.6137
YIQ	173.5470, 41.9010, 28.0850

# Conversions

## Conversions Part 2

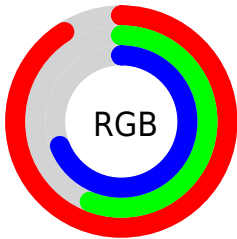
<b>Format</b>	<b>Color</b>
<b>R<sub>YB</sub></b>	231, 144, 175
Decimal	15175855
CIE <sub>Lab</sub>	69.49, 36.91, -2.25
CIE <sub>LCh</sub>	69, 36.980, 356.513
Yxy	40.0325, 0.3717, 0.2937
Android (android.graphics.Color)	4293365935 (0xFFE790AF)
YUV	173.5470, 0.7163, 50.3863
Hunter-Lab	63.2697, 32.2200, 1.5442

# Details

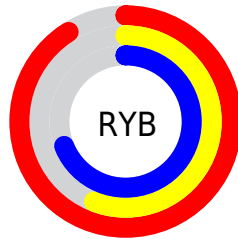
The HunterLab color **63.2697, 32.2200, 1.5442** is a light color, and the websafe version is hex **FF99CC**. A complement of this color would be **82.0075, -33.5832, 10.4360**, and the grayscale version is **64.8571, -3.4606, 3.5238**.

A 20% lighter version of the original color is **82.3529, 20.4962, -2.7933**, and **42.5241, 29.9265, 0.6001** is the 20% darker color. If you saturate the color by 10%, you get **57.6051, 42.1571, 1.9416**, and if you desaturate by 10%, it is **69.5538, 22.1853, 1.7837**.

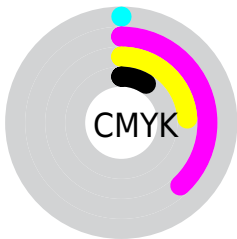
# Distribution



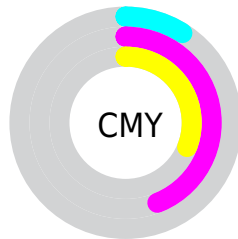
- Red (91%)
- Green (56%)
- Blue (69%)



- Red (91%)
- Yellow (56%)
- Blue (69%)



- Cyan (0%)
- Magenta (38%)
- Yellow (24%)
- Black (9%)



- Cyan (9%)
- Magenta (44%)
- Yellow (31%)

# Brightness & Saturation Gradients

These gradients show how the HunterLab color 63.2697, 32.2200, 1.5442 changes by changing the brightness by 10 percent. The first figure shows a shift by +10% for each color and the second figure -10%.

Similar to the brightness gradients but the following saturation gradients show a change of the HunterLab color 63.2697, 32.2200, 1.5442 by changing the saturation by 10% instead.



63.2697, 32.2200,  
1.5442

63.2697, 32.2200,  
1.5442

186.0807, 38.5695,  
7.4300

52.5013, 31.0766,  
1.0702

86.7254, 34.1879,  
2.6179

42.4230, 29.8201,  
0.6398

99.3447, 35.0350,  
3.2097

33.0877, 28.4383,  
0.2589

112.5228, 35.7995,  
3.8359

24.5598, 26.9264,  
-0.0666

126.2370, 36.4874,  
4.4948

16.9247, 25.2984,  
-0.3283

140.4671, 37.1040,  
5.1848

10.3023, 23.6441,  
-0.5134

155.1950, 37.6539,

0.0000, INF, -NF

5.9048

0.0000, NaN, NaN

170.4045, 38.1412,  
6.6535

0.0000, NaN, NaN

■ 63.2697, 32.2200,  
1.5442

■ 63.2697, 32.2200,  
1.5442

■ 57.6051, 42.1571,  
1.9416

■ 69.5538, 22.1853,  
1.7837

■ 52.6692, 51.6466,  
3.0841

■ 76.3547, 12.2594,  
2.5423

■ 48.5835, 60.1307,  
5.0479

■ 83.5932, 2.5304,  
3.7211

■ 45.4530, 66.9008,  
7.8159

■ 91.2042, -6.9735,  
5.2387

■ 43.3318, 71.2904,  
11.2248

■ 97.6578, -13.9494,  
5.3466

■ 42.1601, 73.0704,  
14.9414

■ 97.8412, -12.9291,  
2.7323

■ 41.9557, 73.3134,  
15.7701

# Harmonies

## Analogous

The Analogous color harmony consists of three colors that are next to each other on the color wheel.



63.2712, 25.8924, -15.9744



63.2697, 32.2200, 1.5442



63.2712, 28.2138, 15.6880

# Triad

The Triadic color harmony groups three colors that are evenly spaced from another and form a triangle on the color wheel.



63.2712, 32.2171, 1.5455



63.2712, -17.1692, 25.2398



63.2712, -20.2413, -27.9346

# Complementary

The Complementary color scheme is a pair of colors which are on the opposite of each other on the color wheel.



63.2697, 32.2200, 1.5442



82.0075, -33.5832, 10.4360

# Split Complementary

Split-complementary colors differ from the complementary color scheme. The scheme consists of three colors, the original color and two neighbors of the complement color.



63.2712, -29.7788, -11.8738



63.2697, 32.2200, 1.5442



63.2712, -28.1395, 18.1665

# Square

The Square scheme is like the rectangle color scheme, but the four colors are evenly spaced on the color wheel.



63.2712, 32.2171, 1.5455



63.2712, -1.4018, 27.0869



63.2712, -32.5136, 5.2855



63.2712, -5.3330, -35.5673



# Rectangle

The Rectangle color scheme consists of four colors that form a rectangle on the color wheel.



63.2697, 32.2200, 1.5442



63.2712, 20.4324, 21.9351



63.2712, -32.5136, 5.2855



63.2712, -24.1192, -23.1670

# Sweetspot

The Sweet Spot groups the original color and five complimentary colors.



63.2712, 32.2171, 1.5455



90.7094, 6.5030, 3.6677



61.5418, 31.4615, -34.3627



41.4529, 3.6936, 1.6110

0.0000, NaN, NaN



46.2646, -2.4686, 2.5136



# Same Dimension

The Same Dimension uses a secret algorithm to generate beautiful new colors.



63.2712, 32.2171, 1.5455



65.9022, 44.5002, 1.9929



65.3050, 21.8686, 16.6660



38.0163, 1.9675, 1.6094



31.4481, 55.0183, 11.3094



8.6489, 15.3230, 1.6243



# Inverse Universe

The Inverse Universe completely reimagines the original color for something new.



63.2712, 32.2171, 1.5455



65.9022, 44.5002, 1.9929



79.1024, -22.5257, -8.3178



38.0163, 1.9675, 1.6094



31.4481, 55.0183, 11.3094



8.6489, 15.3230, 1.6243



# Previews

## White Background



This preview shows how the HunterLab color 63.2697, 32.2200, 1.5442 looks on a white background.

## Color Contrast Check

Large Text (above 18pt) WCAG AA × Fail

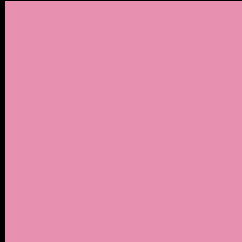
Any Text WCAG AA × Fail

Large Text (above 18pt) WCAG AAA × Fail

Any Text WCAG AAA × Fail



# Black Background



This preview shows how the HunterLab color 63.2697, 32.2200, 1.5442 looks on a black background.

## Color Contrast Check

Large Text (above 18pt) WCAG AA ✓ Pass

Any Text WCAG AA ✓ Pass

Large Text (above 18pt) WCAG AAA ✓ Pass

Any Text WCAG AAA ✓ Pass

If you want to check with other color combinations, try the [Color Contrast Checker](#).

# HunterLab 63.2697, 32.2200, 1.5442 Background



This preview shows how black text looks on a background with the HunterLab color 63.2697, 32.2200, 1.5442.



This preview shows how white text looks on a background with the HunterLab color 63.2697, 32.2200,

1.5442.

# Color Blindness Simulation

Color vision deficiency is a very complex topic, and I could not describe the different causes any better than Wikipedia does, so if you want to learn more, you should check out their [article about color blindness](#).

## Dichromacy



### Original Color

63.2697, 32.2200, 1.5442

### Protanopia

63.4895, -0.2816, -6.3760

### Deuteranopia

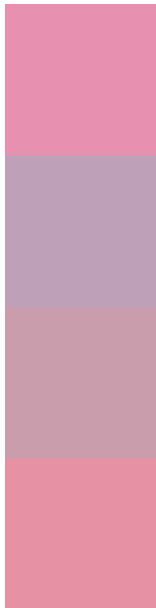
63.4741, 4.3754, 3.2007



## Tritanopia

63.2409, 27.4026, 9.1216

# Trichromacy



## Original Color

63.2697, 32.2200, 1.5442

## Protanomaly

62.9218, 10.6318, -4.2914

## Deuteranomaly

62.9675, 14.1424, 2.2976

## Tritanomaly

63.2938, 29.1529, 6.6115

# Monochromacy



## Original Color

63.2697, 32.2200, 1.5442

## Achromatopsia

65.0590, -3.4714, 3.5348

## Achromatomaly

63.9159, 8.9127, 2.3946

# CSS Examples

## Text

The CSS property to change the color of the text to HunterLab 63.2697, 32.2200, 1.5442 is called "color". The color property can be set on classes, ids or directly on the HTML element.

This example shows how text in the color `rgb(231, 144, 175)` looks like.

```
.text, #text, p{  
    color:rgb(231, 144, 175)  
}
```

If you want to add a text shadow in that color use the text-shadow property, you can generate a text shadow directly with our [CSS Text Shadow Generator](#).

Here you see how black text with a 4 pixel rgb(231, 144, 175) colored shadow looks like.

```
.shadow{ text-shadow: 4px 4px 2px rgb(231, 144, 175) }
```

## Border

The CSS property to change the border of an element to HunterLab 63.2697, 32.2200, 1.5442 is called "border". The border property can be set on classes, ids or directly on the HTML element.

This example shows the color as border, it can be applied via the CSS property "border" or "border-color".

```
.border, #border, table{ border:4px solid rgb(231, 144, 175) }
```



If only the border color should be changed use the property `border-color`.

```
.border{ border-color:rgb(231, 144, 175) }
```

If you want to add a box shadow in that color use:

Here you see how a box with a 4 pixel `rgb(231, 144, 175)` colored shadow looks like.

```
.boxshadow{ -moz-box-shadow:4px 4px 4px  
4px rgb(231, 144, 175); -webkit-box-  
shadow:4px 4px 4px 4px rgb(231, 144, 175);  
box-shadow:4px 4px 4px 4px rgb(231, 144,  
175) }
```

# Background

The CSS property to change the background color of an element to HunterLab 63.2697, 32.2200, 1.5442 is called "background". The background property can be set on classes, ids or directly on the HTML element.

```
.background, #background, body{  
background: rgb(231, 144, 175) }
```

If only the background color should be changed can be used:

```
.background{ background-color: rgb(231,  
144, 175) }
```

This example shows the color as background, it is applied via the CSS property "background".

To optimize and compress your CSS code, you can use our [online CSS compressor and optimizer](#) based on csstidy. If you want to create a linear or radial gradient as background or border, check our [CSS Gradient Generator](#).

Hey! You found this booklet interesting? Support Converting Colors with the new Membership Option!

The pro membership hides all ads, plus gives you double the colors in the color bucket, and more awesome pro features!

**[Learn more, Memberships starting at \\$2.50/m!](#)**

**Follow me  
on Twitter!**

@ConvertingColor