

Converting Colors

HunterLab(63.2721, 8.8306,
7.9780)

Have a look what the booklet for
HunterLab(63.2721, 8.8306, 7.9780)
contains.

HunterLab(63.2721, 8.8306, 7.9780)	3
<i>Conversions</i>	4
<i>Details</i>	6
<i>Harmonies</i>	12
<i>Previews</i>	24
<i>Color Blindness Simulation</i>	28
<i>CSS Examples</i>	31

Color

**HunterLab(63.2721, 8.8306,
7.9780)**

Conversions

Conversions Part 1

Format	Color
Hex	C6A1A0
RGB	198, 161, 160
RGB Percent	78%, 63%, 63%
CMY	0.2235, 0.3686, 0.3725
CMYK	0.00, 0.19, 0.19, 0.22
HSL	2°, 25%, 70%
HSV	2°, 19%, 78%
XYZ	42.3788, 40.0336, 38.7513
YIQ	171.9490, 22.3730, 7.5330

Conversions

Conversions Part 2

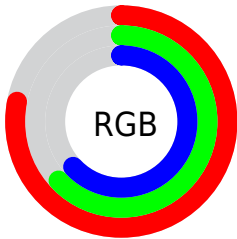
Format	Color
R_{YB}	198, 161, 160
Decimal	13017504
CIE _{Lab}	69.49, 13.47, 5.67
CIE _{LCh}	69, 14.616, 22.828
Yxy	40.0354, 0.3498, 0.3304
Android (android.graphics.Color)	4291207584 (0xFFC6A1A0)
YUV	171.9490, -5.8909, 22.8467
Hunter-Lab	63.2721, 8.8306, 7.9780

Details

The HunterLab color $63.2721, 8.8306, 7.9780$ is a light color, and the websafe version is hex $CC9999$. A complement of this color would be $71.7510, -14.4701, -0.1886$, and the grayscale version is $64.2267, -3.4270, 3.4896$.

A 20% lighter version of the original color is $86.7629, 8.7634, 9.6833$, and $42.3919, 8.8940, 6.0422$ is the 20% darker color. If you saturate the color by 10%, you get $57.5937, 15.9612, 10.1466$, and if you desaturate by 10%, it is $69.3178, 2.0027, 5.9057$.

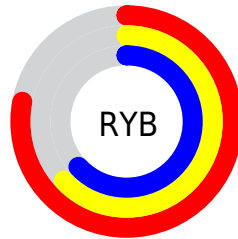
Distribution



Red (78%)

Green (63%)

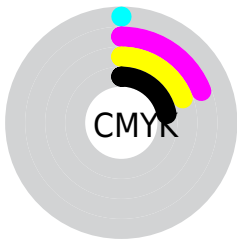
Blue (63%)



Red (78%)

Yellow (63%)

Blue (63%)

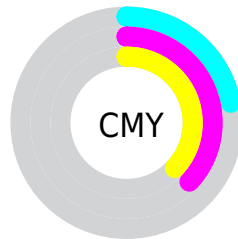


Cyan (0%)

Magenta (19%)

Yellow (19%)

Black (22%)



Cyan (22%)

Magenta (37%)

Yellow (37%)

Brightness & Saturation Gradients

These gradients show how the HunterLab color 63.2721, 8.8306, 7.9780 changes by changing the brightness by 10 percent. The first figure shows a shift by +10% for each color and the second figure -10%.

Similar to the brightness gradients but the following saturation gradients show a change of the HunterLab color 63.2721, 8.8306, 7.9780 by changing the saturation by 10% instead.

63.2721, 8.8306,
7.9780

63.2721, 8.8306,
7.9780

186.0841, 7.2298,
16.7570

52.5035, 8.7225,
7.0974

86.7280, 8.8361,
9.7956

42.4251, 8.5373,
6.2315

99.3474, 8.7502,
10.7321

33.0895, 8.2615,
5.3784

112.5256, 8.6109,
11.6879

24.5615, 7.8793,
4.5330

126.2399, 8.4221,
12.6630

16.9262, 7.3688,
3.6859

140.4701, 8.1870,
13.6576

10.3036, 6.6986,
2.9079

155.1982, 7.9084,

0.0000, INF, NaN

14.6716

0.0000, NaN, NaN

170.4077, 7.5886,
15.7048

0.0000, NaN, NaN

■ 63.2721, 8.8306,
7.9780

■ 63.2721, 8.8306,
7.9780

■ 57.5937, 15.9612,
10.1466

■ 69.3178, 2.0027,
5.9057

■ 52.3466, 23.3719,
12.3939

■ 75.6716, -4.5272,
3.9262

■ 47.6159, 30.9560,
14.6795

■ 82.2916, -10.7902,
2.0335

■ 43.4989, 38.4846,
16.9203

■ 89.1430, -16.8211,
0.2173

■ 40.0997, 45.5609,
18.9790

■ 95.2606, -22.2377,
-0.5738

■ 37.5105, 51.6298,
20.6727

■ 35.7816, 56.1052,
21.8225

■ 34.8665, 58.6337,
22.4329

■ 34.8129, 58.7800,
22.4806

Harmonies

Analogous

The Analogous color harmony consists of three colors that are next to each other on the color wheel.



63.2735, 9.7986, 1.9083



63.2721, 8.8306, 7.9780



63.2735, 4.5244, 12.3811

Triad

The Triadic color harmony groups three colors that are evenly spaced from another and form a triangle on the color wheel.



63.2735, 8.8285, 7.9790



63.2735, -13.2389, 10.3546



63.2735, -4.9663, -9.8361

Complementary

The Complementary color scheme is a pair of colors which are on the opposite of each other on the color wheel.



63.2721, 8.8306, 7.9780



71.7510, -14.4701, -0.1886

Split Complementary

Split-complementary colors differ from the complementary color scheme. The scheme consists of three colors, the original color and two neighbors of the complement color.



63.2735, -10.9135, -7.0227



63.2721, 8.8306, 7.9780



63.2735, -15.5602, 4.9425

Square

The Square scheme is like the rectangle color scheme, but the four colors are evenly spaced on the color wheel.



63.2735, 8.8285, 7.9790



63.2735, -8.2590, 13.6507



63.2735, -14.7268, -1.4534



63.2735, 1.6525, -8.8092

Rectangle

The Rectangle color scheme consists of four colors that form a rectangle on the color wheel.



63.2721, 8.8306, 7.9780



63.2735, 0.4359, 13.9879



63.2735, -14.7268, -1.4534



63.2735, -7.1066, -9.2991

Sweetspot

The Sweet Spot groups the original color and five complimentary colors.



63.2735, 8.8285, 7.9790



94.8235, -0.0707, 7.0287



64.1841, 15.5514, -9.1775



43.6129, 0.2364, 3.3334

0.0000, NaN, NaN



46.2646, -2.4686, 2.5136

Same Dimension

The Same Dimension uses a secret algorithm to generate beautiful new colors.



63.2735, 8.8285, 7.9790



80.9961, 15.6416, 11.8012



68.5850, -0.6116, 13.5001



32.6819, 1.0068, 2.8077



28.1092, 47.2821, 18.1485



6.2463, 9.8547, 4.0215

Inverse Universe

The Inverse Universe completely reimagines the original color for something new.



71.7510, -14.4701, -0.1886



94.6247, -21.8987, -1.3555



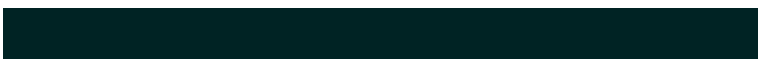
65.9835, -5.4114, -7.4428



34.6664, -4.4292, 0.9013



52.3542, -26.8132, -7.5562



11.4602, -5.9161, -1.5531

Previews

White Background



This preview shows how the HunterLab color 63.2721, 8.8306, 7.9780 looks on a white background.

Color Contrast Check

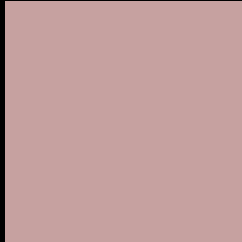
Large Text (above 18pt) WCAG AA × Fail

Any Text WCAG AA × Fail

Large Text (above 18pt) WCAG AAA × Fail

Any Text WCAG AAA × Fail

Black Background



This preview shows how the HunterLab color 63.2721, 8.8306, 7.9780 looks on a black background.

Color Contrast Check

Large Text (above 18pt) WCAG AA ✓ Pass

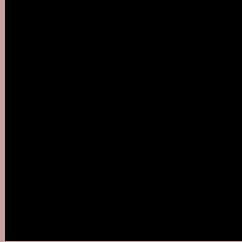
Any Text WCAG AA ✓ Pass

Large Text (above 18pt) WCAG AAA ✓ Pass

Any Text WCAG AAA ✓ Pass

If you want to check with other color combinations, try the [Color Contrast Checker](#).

HunterLab 63.2721, 8.8306, 7.9780 Background



This preview shows how black text looks on a background with the HunterLab color 63.2721, 8.8306, 7.9780.



This preview shows how white text looks on a background with the HunterLab color 63.2721, 8.8306,

Color Blindness Simulation

Color vision deficiency is a very complex topic, and I could not describe the different causes any better than Wikipedia does, so if you want to learn more, you should check out their [article about color blindness](#).

Dichromacy



Original Color

63.2721, 8.8306, 7.9780

Protanopia

63.3176, -2.4528, 5.6401

Deuteranopia

63.2466, 4.3795, 8.3000



Tritanopia

63.1799, 12.0454, 2.5153

Trichromacy



Original Color

63.2721, 8.8306, 7.9780

Protanomaly

63.2330, 1.6245, 6.5026

Deuteranomaly

63.2733, 5.9172, 8.3563

Tritanomaly

63.3331, 10.9002, 4.5356

Monochromacy



Original Color

63.2721, 8.8306, 7.9780

Achromatopsia

64.2295, -3.4271, 3.4897

Achromatomaly

63.7622, 0.7491, 4.8556

CSS Examples

Text

The CSS property to change the color of the text to HunterLab 63.2721, 8.8306, 7.9780 is called "color". The color property can be set on classes, ids or directly on the HTML element.

This example shows how text in the color `rgb(198, 161, 160)` looks like.

```
.text, #text, p{  
    color:rgb(198, 161, 160)  
}
```

If you want to add a text shadow in that color use the text-shadow property, you can generate a text shadow directly with our [CSS Text Shadow Generator](#).

Here you see how black text with a 4 pixel rgb(198, 161, 160) colored shadow looks like.

```
.shadow{ text-shadow: 4px 4px 2px rgb(198, 161, 160) }
```

Border

The CSS property to change the border of an element to HunterLab 63.2721, 8.8306, 7.9780 is called "border".

The border property can be set on classes, ids or directly on the HTML element.

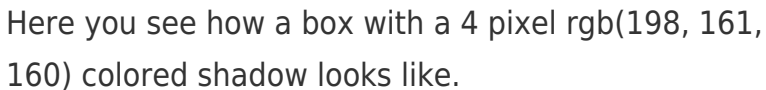
This example shows the color as border, it can be applied via the CSS property "border" or "border-color".

```
.border, #border, table{ border:4px solid rgb(198, 161, 160) }
```


If only the border color should be changed use the property `border-color`.

```
.border{ border-color:rgb(198, 161, 160) }
```

If you want to add a box shadow in that color use:



Here you see how a box with a 4 pixel `rgb(198, 161, 160)` colored shadow looks like.

```
.boxshadow{ -moz-box-shadow:4px 4px 4px 4px rgb(198, 161, 160); -webkit-box-shadow:4px 4px 4px 4px rgb(198, 161, 160); box-shadow:4px 4px 4px 4px rgb(198, 161, 160) }
```

Background

The CSS property to change the background color of an element to HunterLab 63.2721, 8.8306, 7.9780 is called "background". The background property can be set on classes, ids or directly on the HTML element.

```
.background, #background, body{  
background: rgb(198, 161, 160) }
```

If only the background color should be changed can be used:

```
.background{ background-color: rgb(198,  
161, 160) }
```

This example shows the color as background, it is applied via the CSS property "background".

To optimize and compress your CSS code, you can use our [online CSS compressor and optimizer](#) based on csstidy. If you want to create a linear or radial gradient as background or border, check our [CSS Gradient Generator](#).

Hey! You found this booklet interesting? Support Converting Colors with the new Membership Option!

The pro membership hides all ads, plus gives you double the colors in the color bucket, and more awesome pro features!

[Learn more, Memberships starting at \\$2.50/m!](#)

**Follow me
on Twitter!**

@ConvertingColor