

Converting Colors

HunterLab(63.2920, 7.5429,
7.0987)

Have a look what the booklet for
HunterLab(63.2920, 7.5429, 7.0987)
contains.

HunterLab(63.2862, 7.5633, 7.1051)	3
<i>Conversions</i>	4
<i>Details</i>	6
<i>Harmonies</i>	12
<i>Previews</i>	24
<i>Color Blindness Simulation</i>	28
<i>CSS Examples</i>	31

Color

**HunterLab(63.2862, 7.5633,
7.1051)**

Conversions

Conversions Part 1

Format	Color
Hex	C3A2A2
RGB	195, 162, 162
RGB Percent	76%, 64%, 64%
CMY	0.2353, 0.3647, 0.3647
CMYK	0.00, 0.17, 0.17, 0.24
HSL	0°, 22%, 70%
HSV	0°, 17%, 76%
XYZ	41.9476, 40.0514, 39.7022
YIQ	171.8670, 19.6680, 6.9960

Conversions

Conversions Part 2

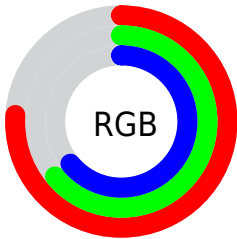
Format	Color
R _Y B	195, 162, 162
Decimal	12821154
CIE Lab	69.51, 12.12, 4.54
CIE LCh	70, 12.940, 20.550
Yxy	40.0532, 0.3447, 0.3291
Android (android.graphics.Color)	4291011234 (0xFFC3A2A2)
YUV	171.8670, -4.8644, 20.2876
Hunter-Lab	63.2862, 7.5633, 7.1051

Details

The HunterLab color $63.2862, 7.5633, 7.1051$ is a light color, and the websafe version is hex $CC9999$. A complement of this color would be $71.1692, -13.5238, 0.6050$, and the grayscale version is $64.1894, -3.4250, 3.4875$.

A 20% lighter version of the original color is $86.7934, 7.4620, 8.7687$, and $42.3561, 7.5280, 5.5818$ is the 20% darker color. If you saturate the color by 10%, you get $57.5043, 14.7619, 9.1026$, and if you desaturate by 10%, it is $69.4346, 0.6631, 5.2372$.

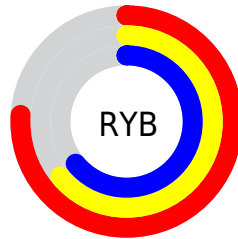
Distribution



Red (76%)

Green (64%)

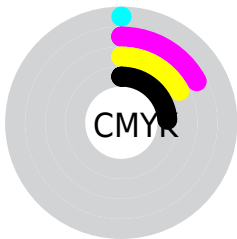
Blue (64%)



Red (76%)

Yellow (64%)

Blue (64%)

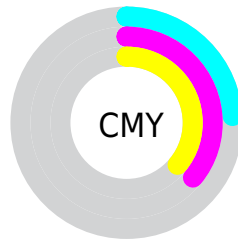


Cyan (0%)

Magenta (17%)

Yellow (17%)

Black (24%)



Cyan (24%)

Magenta (36%)

Yellow (36%)

Brightness & Saturation Gradients

These gradients show how the HunterLab color 63.2862, 7.5633, 7.1051 changes by changing the brightness by 10 percent. The first figure shows a shift by +10% for each color and the second figure -10%.

Similar to the brightness gradients but the following saturation gradients show a change of the HunterLab color 63.2862, 7.5633, 7.1051 by changing the saturation by 10% instead.

63.2862, 7.5633,
7.1051

63.2862, 7.5633,
7.1051

186.1042, 5.4756,
15.4597

52.5167, 7.5212,
6.2850

86.7436, 7.4461,
8.8127

42.4374, 7.4056,
5.4842

99.3637, 7.3027,
9.6984

33.1009, 7.2034,
4.7023

112.5427, 7.1080,
10.6058

24.5718, 6.9000,
3.9361

126.2576, 6.8657,
11.5347

16.9353, 6.4739,
3.1793

140.4885, 6.5789,
12.4848

10.3113, 5.8938,
2.4542

155.2172, 6.2502,

0.0000, INF, NaN

13.4558

0.0000, NaN, NaN

170.4273, 5.8817,
14.4476

0.0000, NaN, NaN

■ 63.2862, 7.5633,
7.1051

■ 63.2862, 7.5633,
7.1051

■ 57.5043, 14.7619,
9.1026

■ 69.4346, 0.6631,
5.2372

■ 52.1540, 22.2400,
11.2232

■ 75.8900, -5.9465,
3.4870

■ 47.3223, 29.8953,
13.4404

■ 82.6103, -12.2981,
1.8425

■ 43.1103, 37.5004,
15.6852

■ 89.5610, -18.4269,
0.2891

■ 39.6274, 44.6520,
17.8304

■ 95.0485, -23.0146,
-0.8495

■ 36.9726, 50.7743,
19.6900

■ 35.2026, 55.2516,
21.0618

■ 34.2725, 57.7509,
21.8315

■ 34.0627, 58.3299,
22.0104

Harmonies

Analogous

The Analogous color harmony consists of three colors that are next to each other on the color wheel.



63.2876, 8.1663, 1.6530



63.2862, 7.5633, 7.1051



63.2876, 3.9672, 11.2018

Triad

The Triadic color harmony groups three colors that are evenly spaced from another and form a triangle on the color wheel.



63.2876, 7.5613, 7.1062



63.2876, -11.8784, 9.9065



63.2876, -5.2264, -8.1126

Complementary

The Complementary color scheme is a pair of colors which are on the opposite of each other on the color wheel.



63.2862, 7.5633, 7.1051



71.1692, -13.5238, 0.6050

Split Complementary

Split-complementary colors differ from the complementary color scheme. The scheme consists of three colors, the original color and two neighbors of the complement color.



63.2876, -10.4071, -5.4381



63.2862, 7.5633, 7.1051



63.2876, -14.1541, 5.1859

Square

The Square scheme is like the rectangle color scheme, but the four colors are evenly spaced on the color wheel.



63.2876, 7.5613, 7.1062



63.2876, -7.3014, 12.7132



63.2876, -13.6255, -0.4490



63.2876, 0.6387, -7.4792

Rectangle

The Rectangle color scheme consists of four colors that form a rectangle on the color wheel.



63.2862, 7.5633, 7.1051



63.2876, 0.4297, 12.7727



63.2876, -13.6255, -0.4490



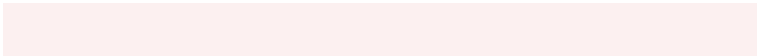
63.2876, -7.1022, -7.5620

Sweetspot

The Sweet Spot groups the original color and five complimentary colors.



63.2876, 7.5613, 7.1062



94.4881, -0.7729, 6.5651



64.3300, 13.0547, -7.7168



43.9318, -0.0607, 3.1526

0.0000, NaN, NaN



46.2646, -2.4686, 2.5136

Same Dimension

The Same Dimension uses a secret algorithm to generate beautiful new colors.



63.2876, 7.5613, 7.1062



82.0164, 13.3381, 10.3957



68.0084, -0.7787, 12.0920



31.7460, 1.0844, 2.6564



27.4611, 47.0244, 17.7447



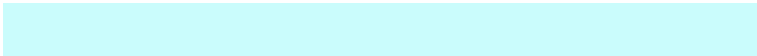
5.7087, 9.7727, 3.6888

Inverse Universe

The Inverse Universe completely reimagines the original color for something new.



71.1692, -13.5238, 0.6050



94.6087, -20.4039, -0.0093



66.0774, -5.4969, -5.7065



33.8057, -4.4127, 0.9619



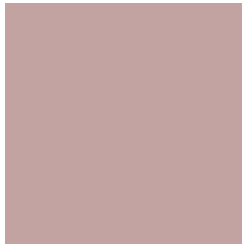
52.8415, -28.0102, -5.5814



10.9841, -5.8226, -1.1598

Previews

White Background



This preview shows how the HunterLab color 63.2862, 7.5633, 7.1051 looks on a white background.

Color Contrast Check

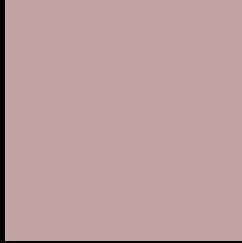
Large Text (above 18pt) WCAG AA × Fail

Any Text WCAG AA × Fail

Large Text (above 18pt) WCAG AAA × Fail

Any Text WCAG AAA × Fail

Black Background



This preview shows how the HunterLab color 63.2862, 7.5633, 7.1051 looks on a black background.

Color Contrast Check

Large Text (above 18pt) WCAG AA ✓ Pass

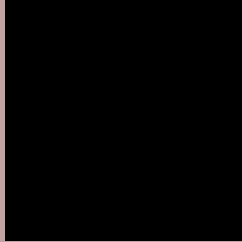
Any Text WCAG AA ✓ Pass

Large Text (above 18pt) WCAG AAA ✓ Pass

Any Text WCAG AAA ✓ Pass

If you want to check with other color combinations, try the [Color Contrast Checker](#).

HunterLab 63.2862, 7.5633, 7.1051 Background



This preview shows how black text looks on a background with the HunterLab color 63.2862, 7.5633, 7.1051.



This preview shows how white text looks on a background with the HunterLab color 63.2862, 7.5633,

Color Blindness Simulation

Color vision deficiency is a very complex topic, and I could not describe the different causes any better than Wikipedia does, so if you want to learn more, you should check out their [article about color blindness](#).

Dichromacy



Original Color

63.2862, 7.5633, 7.1051

Protanopia

63.3465, -2.2951, 5.2274

Deuteranopia

63.2285, 4.4854, 6.9864



Tritanopia

63.1621, 10.6439, 1.9950

Trichromacy



Original Color

63.2862, 7.5633, 7.1051

Protanomaly

63.1935, 1.6045, 5.5691

Deuteranomaly

63.1501, 5.6735, 6.9192

Tritanomaly

63.3167, 9.4928, 4.0327

Monochromacy



Original Color

63.2862, 7.5633, 7.1051

Achromatopsia

64.2295, -3.4271, 3.4897

Achromatomaly

63.6677, 0.4262, 4.7406

CSS Examples

Text

The CSS property to change the color of the text to HunterLab 63.2862, 7.5633, 7.1051 is called "color". The color property can be set on classes, ids or directly on the HTML element.

This example shows how text in the color `rgb(195, 162, 162)` looks like.

```
.text, #text, p{  
    color:rgb(195, 162, 162)  
}
```

If you want to add a text shadow in that color use the text-shadow property, you can generate a text shadow directly with our [CSS Text Shadow Generator](#).

Here you see how black text with a 4 pixel rgb(195, 162, 162) colored shadow looks like.

```
.shadow{ text-shadow: 4px 4px 2px rgb(195, 162, 162) }
```

Border

The CSS property to change the border of an element to HunterLab 63.2862, 7.5633, 7.1051 is called "border".

The border property can be set on classes, ids or directly on the HTML element.

This example shows the color as border, it can be applied via the CSS property "border" or "border-color".

```
.border, #border, table{ border:4px solid rgb(195, 162, 162) }
```


If only the border color should be changed use the property `border-color`.

```
.border{ border-color:rgb(195, 162, 162) }
```

If you want to add a box shadow in that color use:

Here you see how a box with a 4 pixel `rgb(195, 162, 162)` colored shadow looks like.

```
.boxshadow{ -moz-box-shadow:4px 4px 4px  
4px rgb(195, 162, 162); -webkit-box-  
shadow:4px 4px 4px 4px rgb(195, 162, 162);  
box-shadow:4px 4px 4px 4px rgb(195, 162,  
162) }
```

Background

The CSS property to change the background color of an element to HunterLab 63.2862, 7.5633, 7.1051 is called "background". The background property can be set on classes, ids or directly on the HTML element.

```
.background, #background, body{  
background: rgb(195, 162, 162) }
```

If only the background color should be changed can be used:

```
.background{ background-color: rgb(195,  
162, 162) }
```

This example shows the color as background, it is applied via the CSS property "background".

To optimize and compress your CSS code, you can use our [online CSS compressor and optimizer](#) based on csstidy. If you want to create a linear or radial gradient as background or border, check our [CSS Gradient Generator](#).

Hey! You found this booklet interesting? Support Converting Colors with the new Membership Option!

The pro membership hides all ads, plus gives you double the colors in the color bucket, and more awesome pro features!

[Learn more, Memberships starting at \\$2.50/m!](#)

**Follow me
on Twitter!**

@ConvertingColor