

Converting Colors

HunterLab(63.3319, 7.8361,
6.4049)

Have a look what the booklet for
HunterLab(63.3319, 7.8361, 6.4049)
contains.

HunterLab(63.3428, 7.8636, 6.2944)	3
<i>Conversions</i>	4
<i>Details</i>	6
<i>Harmonies</i>	12
<i>Previews</i>	24
<i>Color Blindness Simulation</i>	28
<i>CSS Examples</i>	31

Color

**HunterLab(63.3428, 7.8636,
6.2944)**

Conversions

Conversions Part 1

Format	Color
Hex	C3A2A4
RGB	195, 162, 164
RGB Percent	76%, 64%, 64%
CMY	0.2353, 0.3647, 0.3569
CMYK	0.00, 0.17, 0.16, 0.24
HSL	356°, 22%, 70%
HSV	356°, 17%, 76%
XYZ	42.1269, 40.1231, 40.6462
YIQ	172.0950, 19.0260, 7.6180

Conversions

Conversions Part 2

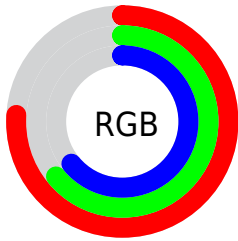
Format	Color
RYB	195, 162, 164
Decimal	12821156
CIELab	69.56, 12.44, 3.51
CIElCh	70, 12.923, 15.744
Yxy	40.1249, 0.3428, 0.3265
Android (android.graphics.Color)	4291011236 (0xFFC3A2A4)
YUV	172.0950, -3.9908, 20.0877
Hunter-Lab	63.3428, 7.8636, 6.2944

Details

The HunterLab color **63.3428, 7.8636, 6.2944** is a light color, and the websafe version is hex **CC9999**. A complement of this color would be **71.1076, -13.8788, 1.5038**, and the grayscale version is **64.2805, -3.4298, 3.4925**.

A 20% lighter version of the original color is **86.8537, 7.7838, 7.9059**, and **42.4081, 7.8006, 4.8367** is the 20% darker color. If you saturate the color by 10%, you get **57.5883, 15.1997, 7.8878**, and if you desaturate by 10%, it is **69.4596, 0.7941, 4.8893**.

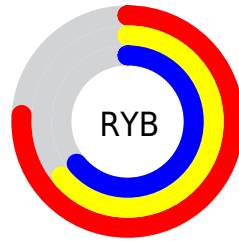
Distribution



Red (76%)

Green (64%)

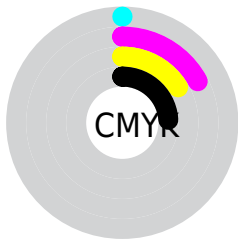
Blue (64%)



Red (76%)

Yellow (64%)

Blue (64%)

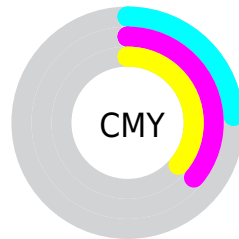


Cyan (0%)

Magenta (17%)

Yellow (16%)

Black (24%)



Cyan (24%)


Magenta (36%)


Yellow (36%)

Brightness & Saturation Gradients


These gradients show how the HunterLab color 63.3428, 7.8636, 6.2944 changes by changing the brightness by 10 percent. The first figure shows a shift by +10% for each color and the second figure -10%.


Similar to the brightness gradients but the following saturation gradients show a change of the HunterLab color 63.3428, 7.8636, 6.2944 by changing the saturation by 10% instead.


 63.3428, 7.8636,
6.2944

 63.3428, 7.8636,
6.2944


186.1853, 5.8895,
14.2637

 52.5699, 7.8062,
5.5289


 86.8065, 7.7750,
7.9023

 42.4870, 7.6744,
4.7870


 99.4295, 7.6450,
8.7421

 33.1465, 7.4552,
4.0693


112.6112, 7.4632,
9.6056

 24.6131, 7.1335,
3.3742

126.3289, 7.2335,
10.4924

 16.9717, 6.6880,
2.6984

140.5623, 6.9587,
11.4020

 10.3422, 6.0871,
2.0398

155.2935, 6.6416,

0.0000, INF, NaN

12.3341

0.0000, NaN, NaN

170.5061, 6.2846,
13.2881

0.0000, NaN, NaN

■ 63.3428, 7.8636,
6.2944

■ 63.3428, 7.8636,
6.2944

■ 57.5883, 15.1997,
7.8878

■ 69.4596, 0.7941,
4.8893

■ 52.2599, 22.7762,
9.6812

■ 75.8801, -6.0100,
3.6474

■ 47.4430, 30.4828,
11.6727

■ 82.5630, -12.5762,
2.5470

■ 43.2366, 38.0862,
13.8231

■ 89.4742, -18.9360,
1.5668

■ 39.7483, 45.1823,
16.0362

■ 95.0485, -23.0146,
-0.8495

■ 37.0761, 51.2028,
18.1457

■ 35.2777, 55.5474,
19.9374

■ 34.3138, 57.9093,
21.2100

■ 34.1002, 58.4741,
21.4425

Harmonies

Analogous

The Analogous color harmony consists of three colors that are next to each other on the color wheel.



63.3442, 7.9428, 0.7440



63.3428, 7.8636, 6.2944



63.3442, 4.6954, 10.6727

Triad

The Triadic color harmony groups three colors that are evenly spaced from another and form a triangle on the color wheel.



63.3442, 7.8616, 6.2955



63.3442, -11.2738, 10.4990



63.3442, -6.1414, -7.8779

Complementary

The Complementary color scheme is a pair of colors which are on the opposite of each other on the color wheel.



63.3428, 7.8636, 6.2944



71.1076, -13.8788, 1.5038

Split Complementary

Split-complementary colors differ from the complementary color scheme. The scheme consists of three colors, the original color and two neighbors of the complement color.



63.3442, -11.0764, -4.7427



63.3428, 7.8636, 6.2944



63.3442, -13.9655, 6.0378

Square

The Square scheme is like the rectangle color scheme, but the four colors are evenly spaced on the color wheel.



63.3442, 7.8616, 6.2955



63.3442, -6.4198, 12.9444



63.3442, -13.8946, 0.4619



63.3442, -0.2884, -7.7928

Rectangle

The Rectangle color scheme consists of four colors that form a rectangle on the color wheel.



63.3428, 7.8636, 6.2944



63.3442, 1.3251, 12.4848



63.3442, -13.8946, 0.4619



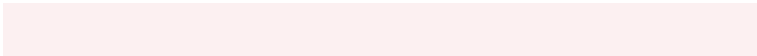
63.3442, -7.9580, -7.1540

Sweetspot

The Sweet Spot groups the original color and five complimentary colors.



63.3442, 7.8616, 6.2955



94.5117, -0.6415, 6.2213



64.1045, 12.3219, -8.0360



43.9444, 0.0092, 2.9695

0.0000, NaN, NaN



46.2646, -2.4686, 2.5136

Same Dimension

The Same Dimension uses a secret algorithm to generate beautiful new colors.



63.3442, 7.8616, 6.2955



82.1038, 13.8095, 9.1181



67.3651, 0.3229, 11.4289



31.7609, 1.1668, 2.4389



27.4992, 47.1707, 17.1689



5.7464, 9.9174, 3.1202

Inverse Universe

The Inverse Universe completely reimagines the original color for something new.



63.3442, 7.8616, 6.2955



82.1038, 13.8095, 9.1181



66.7450, -6.5797, -4.8507



31.7609, 1.1668, 2.4389



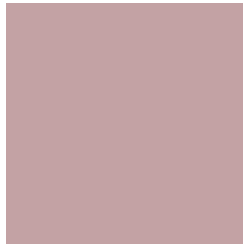
27.4992, 47.1707, 17.1689



5.7464, 9.9174, 3.1202

Previews

White Background



This preview shows how the HunterLab color 63.3428, 7.8636, 6.2944 looks on a white background.

Color Contrast Check

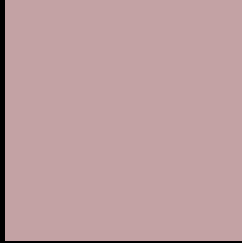
Large Text (above 18pt) WCAG AA × Fail

Any Text WCAG AA × Fail

Large Text (above 18pt) WCAG AAA × Fail

Any Text WCAG AAA × Fail

Black Background



This preview shows how the HunterLab color 63.3428, 7.8636, 6.2944 looks on a black background.

Color Contrast Check

Large Text (above 18pt) WCAG AA ✓ Pass

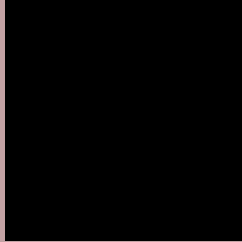
Any Text WCAG AA ✓ Pass

Large Text (above 18pt) WCAG AAA ✓ Pass

Any Text WCAG AAA ✓ Pass

If you want to check with other color combinations, try the [Color Contrast Checker](#).

HunterLab 63.3428, 7.8636, 6.2944 Background



This preview shows how black text looks on a background with the HunterLab color 63.3428, 7.8636, 6.2944.



This preview shows how white text looks on a background with the HunterLab color 63.3428, 7.8636,

6.2944.

Color Blindness Simulation

Color vision deficiency is a very complex topic, and I could not describe the different causes any better than Wikipedia does, so if you want to learn more, you should check out their [article about color blindness](#).

Dichromacy



Original Color

63.3428, 7.8636, 6.2944

Protanopia

63.3146, -2.2889, 4.2831

Deuteranopia

63.2851, 4.7887, 6.1751



Tritanopia

63.4371, 10.1271, 2.3163

Trichromacy



Original Color

63.3428, 7.8636, 6.2944

Protanomaly

63.1555, 1.5918, 4.6225

Deuteranomaly

63.2069, 5.9762, 6.1069

Tritanomaly

63.3465, 9.6498, 3.6079

Monochromacy



Original Color

63.3428, 7.8636, 6.2944

Achromatopsia

64.2295, -3.4271, 3.4897

Achromatomaly

63.6970, 0.5853, 4.3210

CSS Examples

Text

The CSS property to change the color of the text to HunterLab 63.3428, 7.8636, 6.2944 is called "color". The color property can be set on classes, ids or directly on the HTML element.

This example shows how text in the color `rgb(195, 162, 164)` looks like.

```
.text, #text, p{  
    color:rgb(195, 162, 164)  
}
```

If you want to add a text shadow in that color use the text-shadow property, you can generate a text shadow directly with our [CSS Text Shadow Generator](#).

Here you see how black text with a 4 pixel rgb(195, 162, 164) colored shadow looks like.

```
.shadow{ text-shadow: 4px 4px 2px rgb(195, 162, 164) }
```

Border

The CSS property to change the border of an element to HunterLab 63.3428, 7.8636, 6.2944 is called "border".

The border property can be set on classes, ids or directly on the HTML element.

This example shows the color as border, it can be applied via the CSS property "border" or "border-color".

```
.border, #border, table{ border:4px solid rgb(195, 162, 164) }
```


If only the border color should be changed use the property `border-color`.

```
.border{ border-color:rgb(195, 162, 164) }
```

If you want to add a box shadow in that color use:

Here you see how a box with a 4 pixel `rgb(195, 162, 164)` colored shadow looks like.

```
.boxshadow{ -moz-box-shadow:4px 4px 4px  
4px rgb(195, 162, 164); -webkit-box-  
shadow:4px 4px 4px 4px rgb(195, 162, 164);  
box-shadow:4px 4px 4px 4px rgb(195, 162,  
164) }
```

Background

The CSS property to change the background color of an element to HunterLab 63.3428, 7.8636, 6.2944 is called "background". The background property can be set on classes, ids or directly on the HTML element.

```
.background, #background, body{  
background: rgb(195, 162, 164) }
```

If only the background color should be changed can be used:

```
.background{ background-color: rgb(195,  
162, 164) }
```

This example shows the color as background, it is applied via the CSS property "background".

To optimize and compress your CSS code, you can use our [online CSS compressor and optimizer](#) based on csstidy. If you want to create a linear or radial gradient as background or border, check our [CSS Gradient Generator](#).

Hey! You found this booklet interesting? Support Converting Colors with the new Membership Option!

The pro membership hides all ads, plus gives you double the colors in the color bucket, and more awesome pro features!

[Learn more, Memberships starting at \\$2.50/m!](#)

**Follow me
on Twitter!**

@ConvertingColor