

Converting Colors

HunterLab(63.3579, 2.8610,
5.6058)

Have a look what the booklet for
HunterLab(63.3579, 2.8610, 5.6058)
contains.

HunterLab(63.4849, 2.5931, 5.9194)	3
<i>Conversions</i>	4
<i>Details</i>	6
<i>Harmonies</i>	12
<i>Previews</i>	24
<i>Color Blindness Simulation</i>	28
<i>CSS Examples</i>	31

Color

**HunterLab(63.4849, 2.5931,
5.9194)**

Conversions

Conversions Part 1

Format	Color
Hex	B9A6A5
RGB	185, 166, 165
RGB Percent	73%, 65%, 65%
CMY	0.2745, 0.3490, 0.3529
CMYK	0.00, 0.10, 0.11, 0.27
HSL	3°, 12%, 69%
HSV	3°, 11%, 73%
XYZ	40.4353, 40.3033, 41.2454
YIQ	171.5670, 11.6450, 3.7170

Conversions

Conversions Part 2

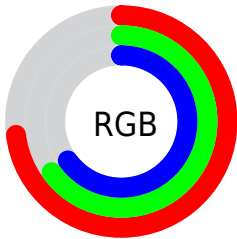
Format	Color
RYB	185, 166, 165
Decimal	12166821
CIELab	69.69, 6.71, 3.02
CIELCh	70, 7.364, 24.237
Yxy	40.3051, 0.3315, 0.3304
Android (android.graphics.Color)	4290356901 (0xFFB9A6A5)
YUV	171.5670, -3.2375, 11.7807
Hunter-Lab	63.4849, 2.5931, 5.9194

Details

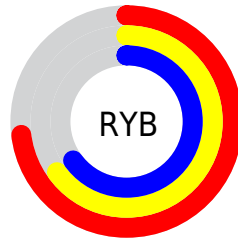
The HunterLab color $63.4849, 2.5931, 5.9194$ is a light color, and the websafe version is hex 999999 . A complement of this color would be $67.6625, -9.1547, 1.3132$, and the grayscale version is $64.0609, -3.4181, 3.4805$.

A 20% lighter version of the original color is $86.9373, 1.9533, 7.4272$, and $42.5822, 3.0886, 4.5404$ is the 20% darker color. If you saturate the color by 10%, you get $58.0699, 8.7087, 7.9602$, and if you desaturate by 10%, it is $69.1805, -3.2539, 3.9421$.

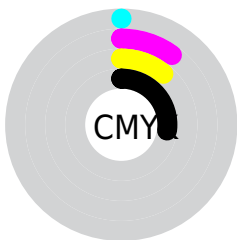
Distribution



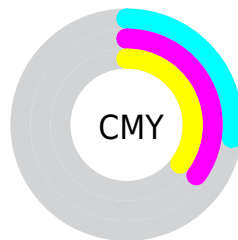
- Red (73%)
- Green (65%)
- Blue (65%)



- Red (73%)
- Yellow (65%)
- Blue (65%)



- Cyan (0%)
- Magenta (10%)
- Yellow (11%)
- Black (27%)



- Cyan (27%)
- Magenta (35%)
- Yellow (35%)

Brightness & Saturation Gradients

These gradients show how the HunterLab color 63.4849, 2.5931, 5.9194 changes by changing the brightness by 10 percent. The first figure shows a shift by +10% for each color and the second figure -10%.

Similar to the brightness gradients but the following saturation gradients show a change of the HunterLab color 63.4849, 2.5931, 5.9194 by changing the saturation by 10% instead.

■ 63.4849, 2.5931,
5.9194

■ 63.4849, 2.5931,
5.9194

186.3888, -1.4684,
13.7122

■ 52.7034, 2.8207,
5.1789

■ 86.9643, 1.9762,
7.4817

■ 42.6113, 2.9906,
4.4639

■ 99.5946, 1.5990,
8.3004

■ 33.2610, 3.0931,
3.7754

112.7833, 1.1797,
9.1438

■ 24.7168, 3.1174,
3.1128

126.5077, 0.7209,
10.0113

■ 17.0634, 3.0478,
2.4739

140.7476, 0.2249,
10.9024

■ 10.4199, 2.8590,
1.8529

155.4850, -0.3064,

0.0000, INF, NaN

11.8166

0.0000, NaN, NaN

170.7037, -0.8713,
12.7534

0.0000, NaN, NaN

■ 63.4849, 2.5931,
5.9194

■ 63.4849, 2.5931,
5.9194

■ 58.0699, 8.7087,
7.9602

■ 69.1805, -3.2539,
3.9421

■ 52.9793, 15.1075,
10.0551

■ 75.1140, -8.8522,
2.0237

■ 48.2743, 21.7618,
12.1838

■ 81.2561, -14.2344,
0.1601

■ 44.0271, 28.5805,
14.3007

■ 87.5818, -19.4314,
-1.6554

■ 40.3215, 35.3673,
16.3236

■ 93.9850, -24.9623,
-2.2067

■ 37.2462, 41.7847,
18.1268

■ 94.3686, -25.5174,
-1.7374

■ 34.8806, 47.3598,
19.5528

■ 33.2695, 51.5831,
20.4585

■ 32.4282, 53.9374,
20.9264

Harmonies

Analogous

The Analogous color harmony consists of three colors that are next to each other on the color wheel.



63.4863, 3.1471, 2.8372



63.4849, 2.5931, 5.9194



63.4863, 0.4185, 8.2303

Triad

The Triadic color harmony groups three colors that are evenly spaced from another and form a triangle on the color wheel.



63.4863, 2.5913, 5.9204



63.4863, -8.5345, 6.9342



63.4863, -4.0366, -2.9493

Complementary

The Complementary color scheme is a pair of colors which are on the opposite of each other on the color wheel.



63.4849, 2.5931, 5.9194



67.6625, -9.1547, 1.3132

Split Complementary

Split-complementary colors differ from the complementary color scheme. The scheme consists of three colors, the original color and two neighbors of the complement color.



63.4863, -7.1125, -1.7211



63.4849, 2.5931, 5.9194



63.4863, -9.6745, 4.0681

Square

The Square scheme is like the rectangle color scheme, but the four colors are evenly spaced on the color wheel.



63.4863, 2.5913, 5.9204



63.4863, -6.0140, 8.7940



63.4863, -9.1594, 0.8881



63.4863, -0.7245, -2.3906

Rectangle

The Rectangle color scheme consists of four colors that form a rectangle on the color wheel.



63.4849, 2.5931, 5.9194



63.4863, -1.6311, 9.0755



63.4863, -9.1594, 0.8881



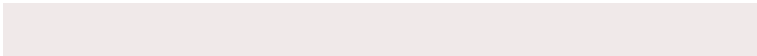
63.4863, -5.1316, -2.7299

Sweetspot

The Sweet Spot groups the original color and five complimentary colors.



63.4863, 2.5913, 5.9204



90.8472, -2.6337, 5.8611



63.7854, 6.2319, -2.7385



41.8935, -0.9342, 2.8193



96.5975, -5.1542, 5.2483



43.2801, -2.3093, 2.3515

Same Dimension

The Same Dimension uses a secret algorithm to generate beautiful new colors.



63.4863, 2.5913, 5.9204



83.1848, 5.4000, 8.5714



66.3943, -2.4003, 9.0811



30.1373, 0.8016, 2.6355



26.8189, 44.3047, 17.3013



5.2738, 7.5428, 3.3818

Inverse Universe

The Inverse Universe completely reimagines the original color for something new.



67.6625, -9.1547, 1.3132



89.9946, -13.7652, 1.0555



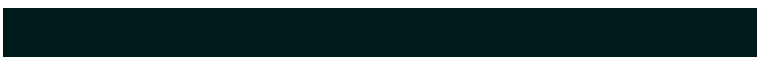
64.6334, -4.2671, -2.3527



31.8297, -3.9571, 0.7688



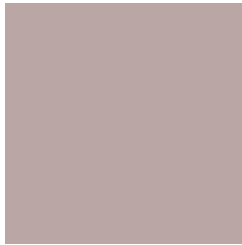
48.4616, -23.9858, -8.7944



9.2286, -4.6609, -1.4733

Previews

White Background



This preview shows how the HunterLab color 63.4849, 2.5931, 5.9194 looks on a white background.

Color Contrast Check

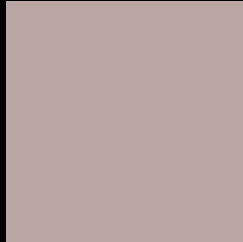
Large Text (above 18pt) WCAG AA × Fail

Any Text WCAG AA × Fail

Large Text (above 18pt) WCAG AAA × Fail

Any Text WCAG AAA × Fail

Black Background



This preview shows how the HunterLab color 63.4849, 2.5931, 5.9194 looks on a black background.

Color Contrast Check

Large Text (above 18pt) WCAG AA ✓ Pass

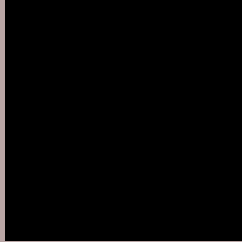
Any Text WCAG AA ✓ Pass

Large Text (above 18pt) WCAG AAA ✓ Pass

Any Text WCAG AAA ✓ Pass

If you want to check with other color combinations, try the [Color Contrast Checker](#).

HunterLab 63.4849, 2.5931, 5.9194 Background



This preview shows how black text looks on a background with the HunterLab color 63.4849, 2.5931, 5.9194.



This preview shows how white text looks on a background with the HunterLab color 63.4849, 2.5931,

5.9194.

Color Blindness Simulation

Color vision deficiency is a very complex topic, and I could not describe the different causes any better than Wikipedia does, so if you want to learn more, you should check out their [article about color blindness](#).

Dichromacy



Original Color

63.4849, 2.5931, 5.9194

Protanopia

63.6696, -2.6296, 5.1424

Deuteranopia

63.5969, 4.4355, 6.0792



Tritanopia

63.4744, 6.2001, 0.3683

Trichromacy



Original Color

63.4849, 2.5931, 5.9194

Protanomaly

63.7135, -1.0285, 5.6703

Deuteranomaly

63.4967, 4.0987, 5.9591

Tritanomaly

63.5346, 4.6993, 2.3381

Monochromacy



Original Color

63.4849, 2.5931, 5.9194

Achromatopsia

64.2295, -3.4271, 3.4897

Achromatomaly

64.0009, -1.3676, 4.6399

CSS Examples

Text

The CSS property to change the color of the text to HunterLab 63.4849, 2.5931, 5.9194 is called "color". The color property can be set on classes, ids or directly on the HTML element.

This example shows how text in the color `rgb(185, 166, 165)` looks like.

```
.text, #text, p{  
    color:rgb(185, 166, 165)  
}
```

If you want to add a text shadow in that color use the text-shadow property, you can generate a text shadow directly with our [CSS Text Shadow Generator](#).

Here you see how black text with a 4 pixel rgb(185, 166, 165) colored shadow looks like.

```
.shadow{ text-shadow: 4px 4px 2px rgb(185, 166, 165) }
```

Border

The CSS property to change the border of an element to HunterLab 63.4849, 2.5931, 5.9194 is called "border".

The border property can be set on classes, ids or directly on the HTML element.

This example shows the color as border, it can be applied via the CSS property "border" or "border-color".

```
.border, #border, table{ border:4px solid rgb(185, 166, 165) }
```


If only the border color should be changed use the property `border-color`.

```
.border{ border-color:rgb(185, 166, 165) }
```

If you want to add a box shadow in that color use:

Here you see how a box with a 4 pixel `rgb(185, 166, 165)` colored shadow looks like.

```
.boxshadow{ -moz-box-shadow:4px 4px 4px  
4px rgb(185, 166, 165); -webkit-box-  
shadow:4px 4px 4px 4px rgb(185, 166, 165);  
box-shadow:4px 4px 4px 4px rgb(185, 166,  
165) }
```

Background

The CSS property to change the background color of an element to HunterLab 63.4849, 2.5931, 5.9194 is called "background". The background property can be set on classes, ids or directly on the HTML element.

```
.background, #background, body{  
background: rgb(185, 166, 165) }
```

If only the background color should be changed can be used:

```
.background{ background-color: rgb(185,  
166, 165) }
```

This example shows the color as background, it is applied via the CSS property "background".

To optimize and compress your CSS code, you can use our [online CSS compressor and optimizer](#) based on csstidy. If you want to create a linear or radial gradient as background or border, check our [CSS Gradient Generator](#).

Hey! You found this booklet interesting? Support Converting Colors with the new Membership Option!

The pro membership hides all ads, plus gives you double the colors in the color bucket, and more awesome pro features!

[Learn more, Memberships starting at \\$2.50/m!](#)

**Follow me
on Twitter!**

@ConvertingColor