

Converting Colors

HunterLab(63.3705, 6.7802,
7.3998)

Have a look what the booklet for
HunterLab(63.3705, 6.7802, 7.3998)
contains.

HunterLab(63.4605, 6.7063, 7.2855)	3
<i>Conversions</i>	4
<i>Details</i>	6
<i>Harmonies</i>	12
<i>Previews</i>	24
<i>Color Blindness Simulation</i>	28
<i>CSS Examples</i>	31

Color

**HunterLab(63.4605, 6.7063,
7.2855)**

Conversions

Conversions Part 1

Format	Color
Hex	C2A3A2
RGB	194, 163, 162
RGB Percent	76%, 64%, 64%
CMY	0.2392, 0.3608, 0.3647
CMYK	0.00, 0.16, 0.16, 0.24
HSL	2°, 21%, 70%
HSV	2°, 16%, 76%
XYZ	41.8669, 40.2724, 39.7491
YIQ	172.1550, 18.7970, 6.2610

Conversions

Conversions Part 2

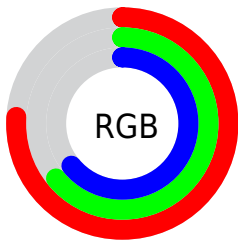
Format	Color
RYB	194, 163, 162
Decimal	12755874
CIELab	69.66, 11.20, 4.76
CIElCh	70, 12.164, 23.019
Yxy	40.2742, 0.3435, 0.3304
Android (android.graphics.Color)	4290945954 (0xFFC2A3A2)
YUV	172.1550, -5.0064, 19.1581
Hunter-Lab	63.4605, 6.7063, 7.2855

Details

The HunterLab color $63.4605, 6.7063, 7.2855$ is a light color, and the websafe version is hex $CC9999$. A complement of this color would be $70.5090, -12.7412, 0.3060$, and the grayscale version is $64.3095, -3.4314, 3.4941$.

A 20% lighter version of the original color is $86.9838, 6.5693, 8.9685$, and $42.5090, 6.7116, 5.7360$ is the 20% darker color. If you saturate the color by 10%, you get $57.8374, 13.5359, 9.3990$, and if you desaturate by 10%, it is $69.4224, 0.1714, 5.2606$.

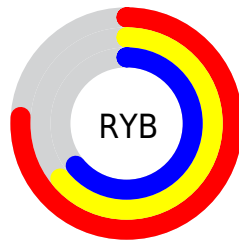
Distribution



Red (76%)

Green (64%)

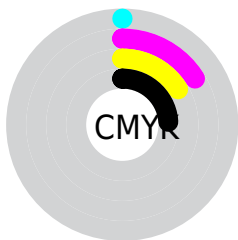
Blue (64%)



Red (76%)

Yellow (64%)

Blue (64%)

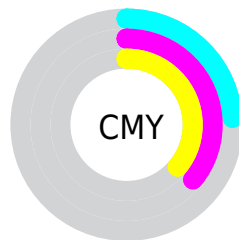


Cyan (0%)

Magenta (16%)

Yellow (16%)

Black (24%)



Cyan (24%)


Magenta (36%)

Yellow (36%)

Brightness & Saturation Gradients

These gradients show how the HunterLab color 63.4605, 6.7063, 7.2855 changes by changing the brightness by 10 percent. The first figure shows a shift by +10% for each color and the second figure -10%.


Similar to the brightness gradients but the following saturation gradients show a change of the HunterLab color 63.4605, 6.7063, 7.2855 by changing the saturation by 10% instead.

 63.4605, 6.7063,
7.2855


 63.4605, 6.7063,
7.2855


186.3539, 4.2798,
15.7234

 52.6805, 6.7104,
6.4536


 86.9372, 6.5034,
9.0145

 42.5900, 6.6436,
5.6402

 99.5663, 6.3199,
9.9102

 33.2414, 6.4935,
4.8446


112.7538, 6.0867,
10.8271

 24.6990, 6.2459,
4.0633

126.4770, 5.8072,
11.7651

 17.0477, 5.8802,
3.2895

140.7158, 5.4845,
12.7239

 10.4066, 5.3657,
2.5422

155.4522, 5.1209,

0.0000, INF, NaN

13.7035

0.0000, NaN, NaN

170.6698, 4.7188,
14.7034

0.0000, NaN, NaN

■ 63.4605, 6.7063,
7.2855

■ 63.4605, 6.7063,
7.2855

■ 57.8374, 13.5359,
9.3990

■ 69.4224, 0.1714,
5.2606

■ 52.6106, 20.6529,
11.5876

■ 75.6694, -6.0803,
3.3195

■ 47.8573, 27.9810,
13.8196

■ 82.1637, -12.0814,
1.4562

■ 43.6678, 35.3418,
16.0264

■ 88.8740, -17.8660,
-0.3386

■ 40.1411, 42.4063,
18.0903

■ 94.9786, -23.2709,
-0.9405

■ 37.3719, 48.6820,
19.8452

■ 35.4249, 53.5929,
21.1115

■ 34.2985, 56.6861,
21.7894

■ 34.0610, 57.3339,
21.9920

Harmonies

Analogous

The Analogous color harmony consists of three colors that are next to each other on the color wheel.



63.4619, 7.5218, 2.2117



63.4605, 6.7063, 7.2855



63.4619, 3.1394, 11.0203

Triad

The Triadic color harmony groups three colors that are evenly spaced from another and form a triangle on the color wheel.



63.4619, 6.7043, 7.2865



63.4619, -11.6683, 9.2470



63.4619, -4.6778, -7.4369

Complementary

The Complementary color scheme is a pair of colors which are on the opposite of each other on the color wheel.



63.4605, 6.7063, 7.2855



70.5090, -12.7412, 0.3060

Split Complementary

Split-complementary colors differ from the complementary color scheme. The scheme consists of three colors, the original color and two neighbors of the complement color.



63.4619, -9.6648, -5.1755



63.4605, 6.7063, 7.2855



63.4619, -13.6102, 4.6725

Square

The Square scheme is like the rectangle color scheme, but the four colors are evenly spaced on the color wheel.



63.4619, 6.7043, 7.2865



63.4619, -7.4972, 12.0827



63.4619, -12.8895, -0.6327



63.4619, 0.8253, -6.5863

Rectangle

The Rectangle color scheme consists of four colors that form a rectangle on the color wheel.



63.4605, 6.7063, 7.2855



63.4619, -0.2517, 12.3931



63.4619, -12.8895, -0.6327



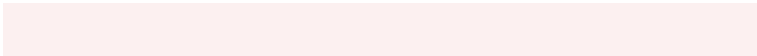
63.4619, -6.4676, -7.0095

Sweetspot

The Sweet Spot groups the original color and five complimentary colors.



63.4619, 6.7043, 7.2865



94.6110, -0.9824, 6.7042



64.1729, 12.4407, -7.1053



43.9972, -0.1726, 3.2264

0.0000, NaN, NaN



46.2646, -2.4686, 2.5136

Same Dimension

The Same Dimension uses a secret algorithm to generate beautiful new colors.



63.4619, 6.7043, 7.2865



82.4688, 12.4912, 10.8812



67.9205, -1.1313, 11.9931



31.8235, 0.9489, 2.7430



27.6589, 46.3503, 17.8547



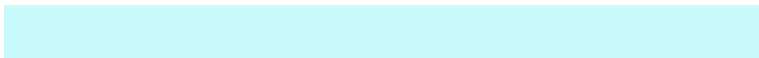
5.9024, 9.1253, 3.7968

Inverse Universe

The Inverse Universe completely reimagines the original color for something new.



70.5090, -12.7412, 0.3060



94.0844, -19.6159, -0.6415



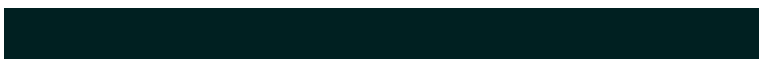
65.7312, -5.1756, -5.6252



33.7231, -4.2817, 0.8648



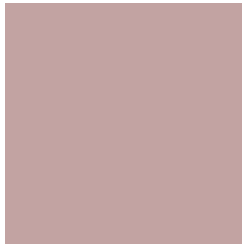
51.1934, -26.0399, -7.7746



10.7220, -5.5100, -1.5070

Previews

White Background



This preview shows how the HunterLab color 63.4605, 6.7063, 7.2855 looks on a white background.

Color Contrast Check

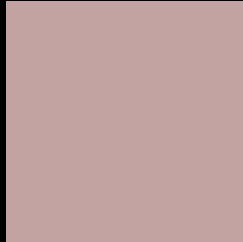
Large Text (above 18pt) WCAG AA × Fail

Any Text WCAG AA × Fail

Large Text (above 18pt) WCAG AAA × Fail

Any Text WCAG AAA × Fail

Black Background



This preview shows how the HunterLab color 63.4605, 6.7063, 7.2855 looks on a black background.

Color Contrast Check

Large Text (above 18pt) WCAG AA ✓ Pass

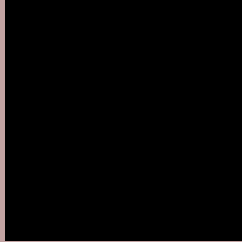
Any Text WCAG AA ✓ Pass

Large Text (above 18pt) WCAG AAA ✓ Pass

Any Text WCAG AAA ✓ Pass

If you want to check with other color combinations, try the [Color Contrast Checker](#).

HunterLab 63.4605, 6.7063, 7.2855 Background



This preview shows how black text looks on a background with the HunterLab color 63.4605, 6.7063, 7.2855.



This preview shows how white text looks on a background with the HunterLab color 63.4605, 6.7063,

7.2855.

Color Blindness Simulation

Color vision deficiency is a very complex topic, and I could not describe the different causes any better than Wikipedia does, so if you want to learn more, you should check out their [article about color blindness](#).

Dichromacy



Original Color

63.4605, 6.7063, 7.2855

Protanopia

63.6406, -2.7878, 5.5561

Deuteranopia

63.6129, 4.3194, 7.4141



Tritanopia

63.3623, 9.9442, 1.7469

Trichromacy



Original Color

63.4605, 6.7063, 7.2855

Protanomaly

63.3860, 0.7781, 5.7747

Deuteranomaly

63.4318, 5.1664, 7.2263

Tritanomaly

63.5177, 8.7897, 3.7943

Monochromacy



Original Color

63.4605, 6.7063, 7.2855

Achromatopsia

64.2295, -3.4271, 3.4897

Achromatomaly

63.9581, -0.0727, 5.0675

CSS Examples

Text

The CSS property to change the color of the text to HunterLab 63.4605, 6.7063, 7.2855 is called "color". The color property can be set on classes, ids or directly on the HTML element.

This example shows how text in the color `rgb(194, 163, 162)` looks like.

```
.text, #text, p{  
    color:rgb(194, 163, 162)  
}
```

If you want to add a text shadow in that color use the text-shadow property, you can generate a text shadow directly with our [CSS Text Shadow Generator](#).

Here you see how black text with a 4 pixel rgb(194, 163, 162) colored shadow looks like.

```
.shadow{ text-shadow: 4px 4px 2px rgb(194, 163, 162) }
```

Border

The CSS property to change the border of an element to HunterLab 63.4605, 6.7063, 7.2855 is called "border".

The border property can be set on classes, ids or directly on the HTML element.

This example shows the color as border, it can be applied via the CSS property "border" or "border-color".

```
.border, #border, table{ border:4px solid rgb(194, 163, 162) }
```


If only the border color should be changed use the property `border-color`.

```
.border{ border-color:rgb(194, 163, 162) }
```

If you want to add a box shadow in that color use:

Here you see how a box with a 4 pixel `rgb(194, 163, 162)` colored shadow looks like.

```
.boxshadow{ -moz-box-shadow:4px 4px 4px  
4px rgb(194, 163, 162); -webkit-box-  
shadow:4px 4px 4px 4px rgb(194, 163, 162);  
box-shadow:4px 4px 4px 4px rgb(194, 163,  
162) }
```

Background

The CSS property to change the background color of an element to HunterLab 63.4605, 6.7063, 7.2855 is called "background". The background property can be set on classes, ids or directly on the HTML element.

```
.background, #background, body{  
background: rgb(194, 163, 162) }
```

If only the background color should be changed can be used:

```
.background{ background-color: rgb(194,  
163, 162) }
```

This example shows the color as background, it is applied via the CSS property "background".

To optimize and compress your CSS code, you can use our [online CSS compressor and optimizer](#) based on csstidy. If you want to create a linear or radial gradient as background or border, check our [CSS Gradient Generator](#).

Hey! You found this booklet interesting? Support Converting Colors with the new Membership Option!

The pro membership hides all ads, plus gives you double the colors in the color bucket, and more awesome pro features!

[Learn more, Memberships starting at \\$2.50/m!](#)

**Follow me
on Twitter!**

@ConvertingColor