

Converting Colors

HunterLab(63.3882, 3.2554,
14.6989)

Have a look what the booklet for
HunterLab(63.3882, 3.2554,
14.6989) contains.

HunterLab(63.5317, 3.0621, 14.9499)	3
<i>Conversions</i>	4
<i>Details</i>	6
<i>Harmonies</i>	12
<i>Previews</i>	24
<i>Color Blindness Simulation</i>	28
<i>CSS Examples</i>	31

Color

**HunterLab(63.5317, 3.0621,
14.9499)**

Conversions

Conversions Part 1

Format	Color
Hex	C2A58F
RGB	194, 165, 143
RGB Percent	76%, 65%, 56%
CMY	0.2392, 0.3529, 0.4392
CMYK	0.00, 0.15, 0.26, 0.24
HSL	26°, 29%, 66%
HSV	26°, 26%, 76%
XYZ	40.6612, 40.3628, 31.6344
YIQ	171.1630, 24.3460, -0.6940

Conversions

Conversions Part 2

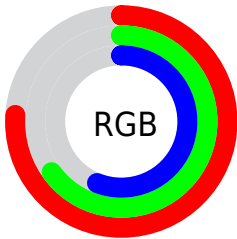
Format	Color
R_{YB}	194, 182, 143
Decimal	12756367
CIE Lab	69.73, 7.23, 15.34
CIE LCh	70, 16.962, 64.763
Yxy	40.3646, 0.3609, 0.3583
Android (android.graphics.Color)	4290946447 (0xFFC2A58F)
YUV	171.1630, -13.8844, 20.0280
Hunter-Lab	63.5317, 3.0621, 14.9499

Details

The HunterLab color **63.5317, 3.0621, 14.9499** is a light color, and the websafe version is hex **CC9999**. A complement of this color would be **62.6408, -7.5565, -9.8422**, and the grayscale version is **63.9326, -3.4113, 3.4736**.

A 20% lighter version of the original color is **87.0212, 2.4879, 17.6756**, and **42.6333, 3.6698, 11.9328** is the 20% darker color. If you saturate the color by 10%, you get **60.0146, 6.2500, 18.3818**, and if you desaturate by 10%, it is **67.1987, 0.1767, 11.0858**.

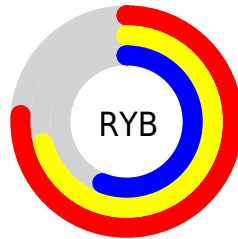
Distribution



Red (76%)

Green (65%)

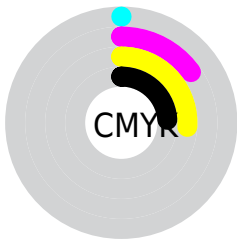
Blue (56%)



Red (76%)

Yellow (71%)

Blue (56%)

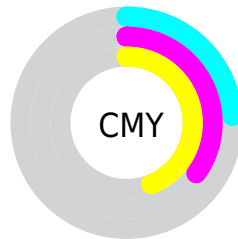


Cyan (0%)

Magenta (15%)

Yellow (26%)

Black (24%)



Cyan (24%)

Magenta (35%)

Yellow (44%)

Brightness & Saturation Gradients

These gradients show how the HunterLab color 63.5317, 3.0621, 14.9499 changes by changing the brightness by 10 percent. The first figure shows a shift by +10% for each color and the second figure -10%.

Similar to the brightness gradients but the following saturation gradients show a change of the HunterLab color 63.5317, 3.0621, 14.9499 by changing the saturation by 10% instead.

■ 63.5317, 3.0621,
14.9499

■ 63.5317, 3.0621,
14.9499

186.4559, -0.8112,
27.5255

■ 52.7475, 3.2635,
13.5202

■ 87.0163, 2.4927,
17.7605

■ 42.6524, 3.4060,
12.0597

■ 99.6491, 2.1378,
19.1523

■ 33.2988, 3.4792,
10.5536

112.8401, 1.7400,
20.5411

■ 24.7510, 3.4718,
8.9781

126.5667, 1.3019,
21.9299

■ 17.0936, 3.3675,
7.2928

140.8087, 0.8259,
23.3211

■ 10.4456, 3.1401,
6.7444

155.5482, 0.3139,

0.0000, INF, NaN

24.7165

0.0000, NaN, NaN

170.7688, -0.2323,
26.1176

0.0000, NaN, NaN

■ 63.5317, 3.0621,
14.9499

■ 63.5317, 3.0621,
14.9499

■ 60.0146, 6.2500,
18.3818

■ 67.1987, 0.1767,
11.0858

■ 56.6581, 9.7647,
21.3221

■ 70.9977, -2.4213,
6.8377

■ 53.4805, 13.6143,
23.7107

■ 74.9182, -4.7569,
2.2512

■ 50.5001, 17.7968,
25.4862

■ 78.9498, -6.8532,
-2.6350

■ 47.7361, 22.2909,
26.5944

■ 83.0832, -8.7321,
-7.7879

■ 45.2076, 27.0477,
27.0018

■ 87.1461, -11.3262,
-10.8658

■ 42.9314, 31.9774,
26.7284

■ 90.7311, -16.9054,
-6.2112

■ 42.1471, 33.7965,
26.5625

■ 94.3897, -22.4031,
-1.6566

■ 94.9786, -23.2710,
-0.9405

Harmonies

Analogous

The Analogous color harmony consists of three colors that are next to each other on the color wheel.



63.5332, 9.2664, 10.9941



63.5317, 3.0621, 14.9499



63.5332, -4.6213, 15.9818

Triad

The Triadic color harmony groups three colors that are evenly spaced from another and form a triangle on the color wheel.



63.5332, 3.0599, 14.9508



63.5332, -17.5192, 2.2745



63.5332, 5.2937, -9.2696

Complementary

The Complementary color scheme is a pair of colors which are on the opposite of each other on the color wheel.



63.5317, 3.0621, 14.9499



62.6408, -7.5565, -9.8422

Split Complementary

Split-complementary colors differ from the complementary color scheme. The scheme consists of three colors, the original color and two neighbors of the complement color.



63.5332, -2.1561, -12.2837



63.5317, 3.0621, 14.9499



63.5332, -15.1334, -5.1312

Square

The Square scheme is like the rectangle color scheme, but the four colors are evenly spaced on the color wheel.



63.5332, 3.0599, 14.9508



63.5332, -16.2703, 9.1888



63.5332, -9.5990, -10.6859



63.5332, 10.5986, -2.8613

Rectangle

The Rectangle color scheme consists of four colors that form a rectangle on the color wheel.



63.5317, 3.0621, 14.9499



63.5332, -9.4921, 14.9904



63.5332, -9.5990, -10.6859



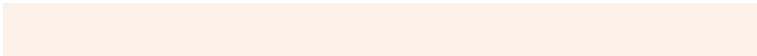
63.5332, 2.9444, -10.7460

Sweetspot

The Sweet Spot groups the original color and five complimentary colors.



63.5332, 3.0599, 14.9508



94.6106, -2.6434, 10.2909



58.4142, 18.7516, -3.6768



43.9044, -0.9925, 5.2345

0.0000, NaN, NaN



46.2646, -2.4686, 2.5136

Same Dimension

The Same Dimension uses a secret algorithm to generate beautiful new colors.



63.5332, 3.0599, 14.9508



82.5462, 6.7390, 23.0696



70.8318, -9.1277, 21.7338



32.8277, -0.7760, 3.8481



34.4028, 26.8322, 21.6686



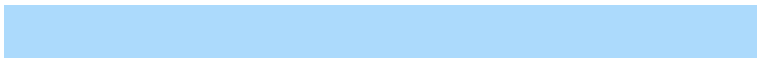
8.0504, 3.4982, 5.0219

Inverse Universe

The Inverse Universe completely reimagines the original color for something new.



62.6408, -7.5565, -9.8422



81.0698, -10.7572, -17.8608



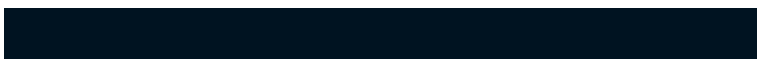
55.3900, 4.7034, -20.4194



32.6758, -2.5939, -0.3870



31.7820, 1.5128, -42.9903



7.5581, -1.2547, -6.7384

Previews

White Background



This preview shows how the HunterLab color 63.5317, 3.0621, 14.9499 looks on a white background.

Color Contrast Check

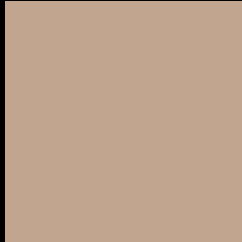
Large Text (above 18pt) WCAG AA × Fail

Any Text WCAG AA × Fail

Large Text (above 18pt) WCAG AAA × Fail

Any Text WCAG AAA × Fail

Black Background



This preview shows how the HunterLab color 63.5317, 3.0621, 14.9499 looks on a black background.

Color Contrast Check

Large Text (above 18pt) WCAG AA ✓ Pass

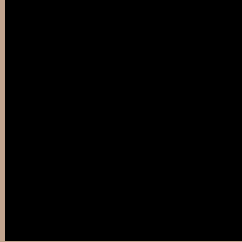
Any Text WCAG AA ✓ Pass

Large Text (above 18pt) WCAG AAA ✓ Pass

Any Text WCAG AAA ✓ Pass

If you want to check with other color combinations, try the [Color Contrast Checker](#).

HunterLab 63.5317, 3.0621, 14.9499 Background



This preview shows how black text looks on a background with the HunterLab color 63.5317, 3.0621, 14.9499.



This preview shows how white text looks on a background with the HunterLab color 63.5317, 3.0621,

Color Blindness Simulation

Color vision deficiency is a very complex topic, and I could not describe the different causes any better than Wikipedia does, so if you want to learn more, you should check out their [article about color blindness](#).

Dichromacy



Original Color

63.5317, 3.0621, 14.9499

Protanopia

63.5677, -4.1074, 13.7340

Deuteranopia

63.5645, 4.6256, 15.0100



Tritanopia

63.6495, 10.8198, 2.5827

Trichromacy



Original Color

63.5317, 3.0621, 14.9499

Protanomaly

63.4350, -1.6048, 14.0226

Deuteranomaly

63.4585, 4.2702, 14.8980

Tritanomaly

63.4977, 8.2615, 7.3543

Monochromacy



Original Color

63.5317, 3.0621, 14.9499

Achromatopsia

63.8154, -3.4050, 3.4672

Achromatomaly

63.6654, -1.4767, 7.8036

CSS Examples

Text

The CSS property to change the color of the text to HunterLab 63.5317, 3.0621, 14.9499 is called "color". The color property can be set on classes, ids or directly on the HTML element.

This example shows how text in the color `rgb(194, 165, 143)` looks like.

```
.text, #text, p{  
    color:rgb(194, 165, 143)  
}
```

If you want to add a text shadow in that color use the text-shadow property, you can generate a text shadow directly with our [CSS Text Shadow Generator](#).

Here you see how black text with a 4 pixel rgb(194, 165, 143) colored shadow looks like.

```
.shadow{ text-shadow: 4px 4px 2px rgb(194, 165, 143) }
```

Border

The CSS property to change the border of an element to HunterLab 63.5317, 3.0621, 14.9499 is called "border". The border property can be set on classes, ids or directly on the HTML element.

This example shows the color as border, it can be applied via the CSS property "border" or "border-color".

```
.border, #border, table{ border:4px solid rgb(194, 165, 143) }
```


If only the border color should be changed use the property `border-color`.

```
.border{ border-color:rgb(194, 165, 143) }
```

If you want to add a box shadow in that color use:

Here you see how a box with a 4 pixel `rgb(194, 165, 143)` colored shadow looks like.

```
.boxshadow{ -moz-box-shadow:4px 4px 4px  
4px rgb(194, 165, 143); -webkit-box-  
shadow:4px 4px 4px 4px rgb(194, 165, 143);  
box-shadow:4px 4px 4px 4px rgb(194, 165,  
143) }
```

Background

The CSS property to change the background color of an element to HunterLab 63.5317, 3.0621, 14.9499 is called "background". The background property can be set on classes, ids or directly on the HTML element.

```
.background, #background, body{  
background: rgb(194, 165, 143) }
```

If only the background color should be changed can be used:

```
.background{ background-color: rgb(194,  
165, 143) }
```

This example shows the color as background, it is applied via the CSS property "background".

To optimize and compress your CSS code, you can use our [online CSS compressor and optimizer](#) based on csstidy. If you want to create a linear or radial gradient as background or border, check our [CSS Gradient Generator](#).

Hey! You found this booklet interesting? Support Converting Colors with the new Membership Option!

The pro membership hides all ads, plus gives you double the colors in the color bucket, and more awesome pro features!

[Learn more, Memberships starting at \\$2.50/m!](#)

**Follow me
on Twitter!**

@ConvertingColor