

# Converting Colors

HunterLab(63.4150, 5.2807,  
5.8867)

Have a look what the booklet for  
HunterLab(63.4150, 5.2807, 5.8867)  
contains.

<b>HunterLab(63.4150, 5.2807, 5.8867)</b> .....	3
<b><i>Conversions</i></b> .....	4
<b><i>Details</i></b> .....	6
<b><i>Harmonies</i></b> .....	12
<b><i>Previews</i></b> .....	24
<b><i>Color Blindness Simulation</i></b> .....	28
<b><i>CSS Examples</i></b> .....	31

# Color

**HunterLab(63.4150, 5.2807,  
5.8867)**

# Conversions

## Conversions Part 1

Format	Color
Hex	BEA4A5
RGB	190, 164, 165
RGB Percent	75%, 64%, 65%
CMY	0.2549, 0.3568, 0.3529
CMYK	0.00, 0.14, 0.13, 0.25
HSL	358°, 17%, 69%
HSV	358°, 14%, 75%
XYZ	41.3022, 40.2146, 41.1826
YIQ	171.8880, 15.1750, 5.8230

# Conversions

## Conversions Part 2

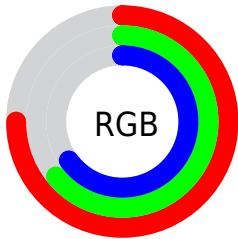
<b>Format</b>	<b>Color</b>
<b>R<sub>YB</sub></b>	190, 164, 165
Decimal	12493989
CIE <sub>Lab</sub>	69.62, 9.65, 2.99
CIE <sub>LCh</sub>	70, 10.106, 17.197
Yxy	40.2164, 0.3366, 0.3278
Android (android.graphics.Color)	4290684069 (0xFFBEA4A5)
YUV	171.8880, -3.3958, 15.8842
Hunter-Lab	63.4150, 5.2807, 5.8867

# Details

The HunterLab color  $63.4150, 5.2807, 5.8867$  is a light color, and the websafe version is hex  $CC9999$ . A complement of this color would be  $69.5662, -11.6376, 1.6283$ , and the grayscale version is  $64.1934, -3.4252, 3.4878$ .

A 20% lighter version of the original color is  $86.9508, 5.1024, 7.4979$ , and  $42.4439, 5.3265, 4.4235$  is the 20% darker color. If you saturate the color by 10%, you get  $57.7040, 12.2563, 7.5232$ , and if you desaturate by 10%, it is  $69.4596, -1.4259, 4.4079$ .

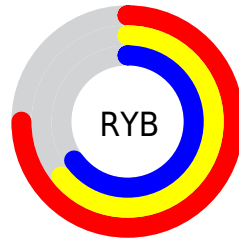
# Distribution



Red (75%)

Green (64%)

Blue (65%)



Red (75%)

Yellow (64%)

Blue (65%)

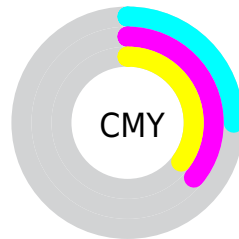


Cyan (0%)

Magenta (14%)

Yellow (13%)

Black (25%)



Cyan (25%)

Magenta (36%)

Yellow (35%)

# Brightness & Saturation Gradients

These gradients show how the HunterLab color 63.4150, 5.2807, 5.8867 changes by changing the brightness by 10 percent. The first figure shows a shift by +10% for each color and the second figure -10%.

Similar to the brightness gradients but the following saturation gradients show a change of the HunterLab color 63.4150, 5.2807, 5.8867 by changing the saturation by 10% instead.



■ 63.4150, 5.2807,  
5.8867

■ 63.4150, 5.2807,  
5.8867

186.2887, 2.2970,  
13.6653

■ 52.6377, 5.3607,  
5.1482

■ 86.8867, 4.9371,  
7.4453

■ 42.5501, 5.3741,  
4.4354

■ 99.5134, 4.6876,  
8.2623

■ 33.2047, 5.3093,  
3.7492

112.6987, 4.3909,  
9.1041

■ 24.6658, 5.1532,  
3.0891

126.4198, 4.0504,  
9.9701

■ 17.0183, 4.8866,  
2.4530

140.6565, 3.6685,  
10.8597

■ 10.3817, 4.4798,  
1.8354

155.3908, 3.2477,

0.0000, INF, NaN

11.7724

0.0000, NaN, NaN

170.6065, 2.7900,  
12.7078

0.0000, NaN, NaN

■ 63.4150, 5.2807,  
5.8867

■ 63.4150, 5.2807,  
5.8867

■ 57.7040, 12.2563,  
7.5232

■ 69.4596, -1.4259,  
4.4079

■ 52.3838, 19.4934,  
9.3262

■ 75.7847, -7.8746,  
3.0659

■ 47.5325, 26.9174,  
11.2933

■ 82.3530, -14.0961,  
1.8428

■ 43.2419, 34.3508,  
13.3907

■ 89.1338, -20.1227,  
0.7210

■ 39.6152, 41.4624,  
15.5345

■ 94.7033, -24.2828,  
-1.2995

■ 36.7535, 47.7477,  
17.5769

■ 34.7298, 52.6089,  
19.3193

■ 33.5510, 55.5806,  
20.5718

■ 33.1107, 56.7513,  
21.0216

# Harmonies

## Analogous

The Analogous color harmony consists of three colors that are next to each other on the color wheel.



63.4164, 5.4636, 1.5604



63.4150, 5.2807, 5.8867



63.4164, 2.7307, 9.3159

# Triad

The Triadic color harmony groups three colors that are evenly spaced from another and form a triangle on the color wheel.



63.4164, 5.2788, 5.8878



63.4164, -9.7423, 8.9031



63.4164, -5.3338, -5.3061

# Complementary

The Complementary color scheme is a pair of colors which are on the opposite of each other on the color wheel.



63.4150, 5.2807, 5.8867



69.5662, -11.6376, 1.6283

# Split Complementary

Split-complementary colors differ from the complementary color scheme. The scheme consists of three colors, the original color and two neighbors of the complement color.



63.4164, -9.2815, -3.0317



63.4150, 5.2807, 5.8867



63.4164, -11.7776, 5.2869

# Square

The Square scheme is like the rectangle color scheme, but the four colors are evenly spaced on the color wheel.



63.4164, 5.2788, 5.8878



63.4164, -5.9792, 10.9699



63.4164, -11.6113, 0.9155



63.4164, -0.7528, -5.1165



# Rectangle

The Rectangle color scheme consists of four colors that form a rectangle on the color wheel.



63.4150, 5.2807, 5.8867



63.4164, 0.0747, 10.7236



63.4164, -11.6113, 0.9155



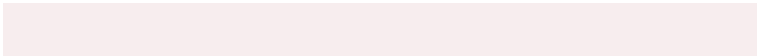
63.4164, -6.7763, -4.7980

# Sweetspot

The Sweet Spot groups the original color and five complimentary colors.



63.4164, 5.2788, 5.8878



93.1848, -1.5808, 6.0064



64.0709, 9.0176, -5.4424



43.3701, -0.4237, 2.8828



98.8636, -5.2751, 5.3714



45.2661, -2.4153, 2.4594



# Same Dimension

The Same Dimension uses a secret algorithm to generate beautiful new colors.



63.4164, 5.2788, 5.8878



83.3411, 9.4912, 8.4723



66.7548, -0.7607, 9.9243



30.8904, 1.0953, 2.4471



27.0047, 46.2955, 17.0685



5.3638, 9.2336, 3.0944



# Inverse Universe

The Inverse Universe completely reimagines the original color for something new.



63.4164, 5.2788, 5.8878



83.3411, 9.4912, 8.4723



66.0091, -5.7650, -3.1833



30.8904, 1.0953, 2.4471



27.0047, 46.2955, 17.0685



5.3638, 9.2336, 3.0944



# Previews

## White Background



This preview shows how the HunterLab color 63.4150, 5.2807, 5.8867 looks on a white background.

## Color Contrast Check

Large Text (above 18pt) WCAG AA × Fail

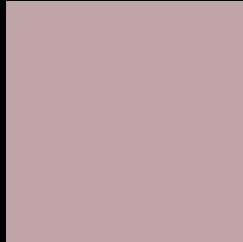
Any Text WCAG AA × Fail

Large Text (above 18pt) WCAG AAA × Fail

Any Text WCAG AAA × Fail



# Black Background



This preview shows how the HunterLab color 63.4150, 5.2807, 5.8867 looks on a black background.

## Color Contrast Check

Large Text (above 18pt) WCAG AA ✓ Pass

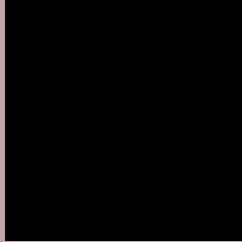
Any Text WCAG AA ✓ Pass

Large Text (above 18pt) WCAG AAA ✓ Pass

Any Text WCAG AAA ✓ Pass

If you want to check with other color combinations, try the [Color Contrast Checker](#).

## HunterLab 63.4150, 5.2807, 5.8867 Background



This preview shows how black text looks on a background with the HunterLab color 63.4150, 5.2807, 5.8867.



This preview shows how white text looks on a background with the HunterLab color 63.4150, 5.2807,

5.8867.

# Color Blindness Simulation

Color vision deficiency is a very complex topic, and I could not describe the different causes any better than Wikipedia does, so if you want to learn more, you should check out their [article about color blindness](#).

## Dichromacy



### Original Color

63.4150, 5.2807, 5.8867

### Protanopia

63.4049, -1.9765, 4.3936

### Deuteranopia

63.5969, 4.4355, 6.0792



## Tritanopia

63.2552, 8.2299, 1.1065

# Trichromacy



## Original Color

63.4150, 5.2807, 5.8867

## Protanomaly

63.3488, 0.7672, 4.8319

## Deuteranomaly

63.5969, 4.4355, 6.0792

## Tritanomaly

63.4122, 7.0687, 3.1745

# Monochromacy



## Original Color

63.4150, 5.2807, 5.8867

## Achromatopsia

64.2295, -3.4271, 3.4897

## Achromatomaly

63.8938, -0.2345, 4.5355

# CSS Examples

## Text

The CSS property to change the color of the text to HunterLab 63.4150, 5.2807, 5.8867 is called "color". The color property can be set on classes, ids or directly on the HTML element.

This example shows how text in the color `rgb(190, 164, 165)` looks like.

```
.text, #text, p{  
    color:rgb(190, 164, 165)  
}
```

If you want to add a text shadow in that color use the text-shadow property, you can generate a text shadow directly with our [CSS Text Shadow Generator](#).

Here you see how black text with a 4 pixel rgb(190, 164, 165) colored shadow looks like.

```
.shadow{ text-shadow: 4px 4px 2px rgb(190, 164, 165) }
```

## Border

The CSS property to change the border of an element to HunterLab 63.4150, 5.2807, 5.8867 is called "border". The border property can be set on classes, ids or directly on the HTML element.

This example shows the color as border, it can be applied via the CSS property "border" or "border-color".

```
.border, #border, table{ border:4px solid rgb(190, 164, 165) }
```



If only the border color should be changed use the property `border-color`.

```
.border{ border-color:rgb(190, 164, 165) }
```

If you want to add a box shadow in that color use:

Here you see how a box with a 4 pixel `rgb(190, 164, 165)` colored shadow looks like.

```
.boxshadow{ -moz-box-shadow:4px 4px 4px  
4px rgb(190, 164, 165); -webkit-box-  
shadow:4px 4px 4px 4px rgb(190, 164, 165);  
box-shadow:4px 4px 4px 4px rgb(190, 164,  
165) }
```

# Background

The CSS property to change the background color of an element to HunterLab 63.4150, 5.2807, 5.8867 is called "background". The background property can be set on classes, ids or directly on the HTML element.

```
.background, #background, body{  
background: rgb(190, 164, 165) }
```

If only the background color should be changed can be used:

```
.background{ background-color: rgb(190,  
164, 165) }
```

This example shows the color as background, it is applied via the CSS property "background".

To optimize and compress your CSS code, you can use our [online CSS compressor and optimizer](#) based on csstidy. If you want to create a linear or radial gradient as background or border, check our [CSS Gradient Generator](#).

Hey! You found this booklet interesting? Support Converting Colors with the new Membership Option!

The pro membership hides all ads, plus gives you double the colors in the color bucket, and more awesome pro features!

**[Learn more, Memberships starting at \\$2.50/m!](#)**

**Follow me  
on Twitter!**

@ConvertingColor