

Converting Colors

HunterLab(63.4334, 8.1051,
8.2928)

Have a look what the booklet for
HunterLab(63.4334, 8.1051, 8.2928)
contains.

HunterLab(63.4421, 7.9670, 8.1512)	3
<i>Conversions</i>	4
<i>Details</i>	6
<i>Harmonies</i>	12
<i>Previews</i>	24
<i>Color Blindness Simulation</i>	28
<i>CSS Examples</i>	31

Color

**HunterLab(63.4421, 7.9670,
8.1512)**

Conversions

Conversions Part 1

Format	Color
Hex	C5A2A0
RGB	197, 162, 160
RGB Percent	77%, 64%, 63%
CMY	0.2274, 0.3647, 0.3725
CMYK	0.00, 0.18, 0.19, 0.23
HSL	3°, 24%, 70%
HSV	3°, 19%, 77%
XYZ	42.2914, 40.2490, 38.7974
YIQ	172.2370, 21.5020, 6.7980

Conversions

Conversions Part 2

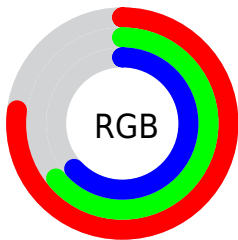
Format	Color
RYB	197, 162, 160
Decimal	12952224
CIELab	69.65, 12.55, 5.88
CIElCh	70, 13.857, 25.099
Yxy	40.2508, 0.3485, 0.3317
Android (android.graphics.Color)	4291142304 (0xFFC5A2A0)
YUV	172.2370, -6.0328, 21.7172
Hunter-Lab	63.4421, 7.9670, 8.1512

Details

The HunterLab color $63.4421, 7.9670, 8.1512$ is a light color, and the websafe version is hex $CC9999$. A complement of this color would be $71.0871, -13.6924, -0.4936$, and the grayscale version is $64.3468, -3.4334, 3.4961$.

A 20% lighter version of the original color is $86.9499, 7.8651, 9.8773$, and $42.5390, 8.0697, 6.1884$ is the 20% darker color. If you saturate the color by 10%, you get $57.9046, 14.7608, 10.4151$, and if you desaturate by 10%, it is $69.3211, 1.4736, 5.9459$.

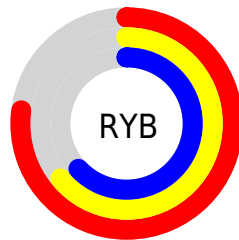
Distribution



Red (77%)

Green (64%)

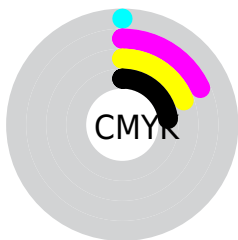
Blue (63%)



Red (77%)

Yellow (64%)

Blue (63%)

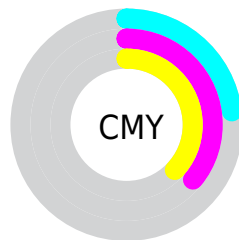


Cyan (0%)

Magenta (18%)

Yellow (19%)

Black (23%)



Cyan (23%)

Magenta (36%)

Yellow (37%)

Brightness & Saturation Gradients


These gradients show how the HunterLab color 63.4421, 7.9670, 8.1512 changes by changing the brightness by 10 percent. The first figure shows a shift by +10% for each color and the second figure -10%.


Similar to the brightness gradients but the following saturation gradients show a change of the HunterLab color 63.4421, 7.9670, 8.1512 by changing the saturation by 10% instead.


 63.4421, 7.9670,
8.1512

 63.4421, 7.9670,
8.1512


186.3276, 6.0286,
17.0114

 52.6632, 7.9048,
7.2591


 86.9168, 7.8872,
9.9898

 42.5739, 7.7681,
6.3809


 99.5449, 7.7614,
10.9359

 33.2265, 7.5437,
5.5144

112.7315, 7.5837,
11.9010

 24.6856, 7.2166,
4.6543

126.4539, 7.3579,
12.8850

 17.0358, 6.7654,
3.7905

140.6919, 7.0870,
13.8881

 10.3965, 6.1587,
2.9890

155.4274, 6.7736,

0.0000, INF, NaN

14.9103

0.0000, NaN, NaN

170.6442, 6.4201,
15.9514

0.0000, NaN, NaN

■ 63.4421, 7.9670,
8.1512

■ 63.4421, 7.9670,
8.1512

■ 57.9046, 14.7608,
10.4151

■ 69.3211, 1.4736,
5.9459

■ 52.7657, 21.8438,
12.7144

■ 75.4879, -4.7281,
3.8019

■ 48.1018, 29.1340,
15.0059

■ 81.9044, -10.6698,
1.7181

■ 44.0006, 36.4477,
17.2082

■ 88.5390, -16.3850,
-0.3109

■ 40.5576, 43.4549,
19.1943

■ 95.1895, -22.4980,
-0.6662

■ 37.8615, 49.6724,
20.7987

■ 35.9706, 54.5456,
21.8603

■ 34.8740, 57.6280,
22.3809

■ 34.7882, 57.8634,
22.4493

Harmonies

Analogous

The Analogous color harmony consists of three colors that are next to each other on the color wheel.



63.4435, 9.1450, 2.4605



63.4421, 7.9670, 8.1512



63.4435, 3.6963, 12.2006

Triad

The Triadic color harmony groups three colors that are evenly spaced from another and form a triangle on the color wheel.



63.4435, 7.9649, 8.1522



63.4435, -13.0264, 9.7025



63.4435, -4.4207, -9.1421

Complementary

The Complementary color scheme is a pair of colors which are on the opposite of each other on the color wheel.



63.4421, 7.9670, 8.1512



71.0871, -13.6924, -0.4936

Split Complementary

Split-complementary colors differ from the complementary color scheme. The scheme consists of three colors, the original color and two neighbors of the complement color.



63.4435, -10.1756, -6.7494



63.4421, 7.9670, 8.1512



63.4435, -15.0190, 4.4305

Square

The Square scheme is like the rectangle color scheme, but the four colors are evenly spaced on the color wheel.



63.4435, 7.9649, 8.1522



63.4435, -8.4486, 13.0326



63.4435, -13.9959, -1.6348



63.4435, 1.8352, -7.9003

Rectangle

The Rectangle color scheme consists of four colors that form a rectangle on the color wheel.



63.4421, 7.9670, 8.1512



63.4435, -0.2417, 13.6159



63.4435, -13.9959, -1.6348



63.4435, -6.4753, -8.7299

Sweetspot

The Sweet Spot groups the original color and five complimentary colors.



63.4435, 7.9649, 8.1522



94.9554, -0.2966, 7.1775



63.9994, 14.8053, -8.2179



43.6804, 0.1204, 3.4093

0.0000, NaN, NaN



46.2646, -2.4686, 2.5136

Same Dimension

The Same Dimension uses a secret algorithm to generate beautiful new colors.



63.4435, 7.9649, 8.1522



81.4561, 14.7665, 12.2861



68.6970, -1.3094, 13.6039



32.7529, 0.8829, 2.8869



28.2834, 46.6928, 18.2456



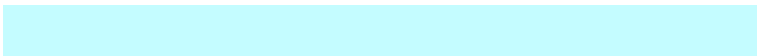
6.4161, 9.3066, 4.1165

Inverse Universe

The Inverse Universe completely reimagines the original color for something new.



71.0871, -13.6924, -0.4936



94.0813, -21.0907, -2.0185



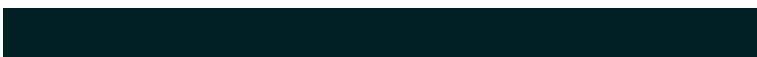
65.4304, -4.7557, -7.6316



34.5909, -4.3092, 0.8123



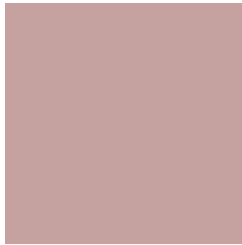
50.8747, -25.0187, -9.5808



11.2085, -5.6125, -1.8940

Previews

White Background



This preview shows how the HunterLab color 63.4421, 7.9670, 8.1512 looks on a white background.

Color Contrast Check

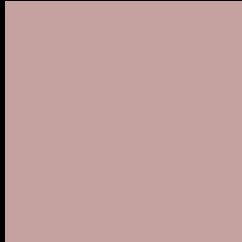
Large Text (above 18pt) WCAG AA × Fail

Any Text WCAG AA × Fail

Large Text (above 18pt) WCAG AAA × Fail

Any Text WCAG AAA × Fail

Black Background



This preview shows how the HunterLab color 63.4421, 7.9670, 8.1512 looks on a black background.

Color Contrast Check

Large Text (above 18pt) WCAG AA ✓ Pass

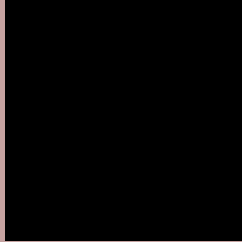
Any Text WCAG AA ✓ Pass

Large Text (above 18pt) WCAG AAA ✓ Pass

Any Text WCAG AAA ✓ Pass

If you want to check with other color combinations, try the [Color Contrast Checker](#).

HunterLab 63.4421, 7.9670, 8.1512 Background



This preview shows how black text looks on a background with the HunterLab color 63.4421, 7.9670, 8.1512.



This preview shows how white text looks on a background with the HunterLab color 63.4421, 7.9670,

Color Blindness Simulation

Color vision deficiency is a very complex topic, and I could not describe the different causes any better than Wikipedia does, so if you want to learn more, you should check out their [article about color blindness](#).

Dichromacy



Original Color

63.4421, 7.9670, 8.1512

Protanopia

63.6740, -2.7866, 6.4830

Deuteranopia

63.3761, 4.8689, 8.0239



Tritanopia

63.4830, 11.6862, 2.3986

Trichromacy



Original Color

63.4421, 7.9670, 8.1512

Protanomaly

63.5209, 1.1244, 6.8186

Deuteranomaly

63.3008, 6.0640, 7.9613

Tritanomaly

63.5001, 10.0338, 4.7145

Monochromacy



Original Color

63.4421, 7.9670, 8.1512

Achromatopsia

64.2295, -3.4271, 3.4897

Achromatomaly

63.7622, 0.7491, 4.8556

CSS Examples

Text

The CSS property to change the color of the text to HunterLab 63.4421, 7.9670, 8.1512 is called "color". The color property can be set on classes, ids or directly on the HTML element.

This example shows how text in the color `rgb(197, 162, 160)` looks like.

```
.text, #text, p{  
    color:rgb(197, 162, 160)  
}
```

If you want to add a text shadow in that color use the text-shadow property, you can generate a text shadow directly with our [CSS Text Shadow Generator](#).

Here you see how black text with a 4 pixel rgb(197, 162, 160) colored shadow looks like.

```
.shadow{ text-shadow: 4px 4px 2px rgb(197, 162, 160) }
```

Border

The CSS property to change the border of an element to HunterLab 63.4421, 7.9670, 8.1512 is called "border".

The border property can be set on classes, ids or directly on the HTML element.

This example shows the color as border, it can be applied via the CSS property "border" or "border-color".

```
.border, #border, table{ border:4px solid rgb(197, 162, 160) }
```


If only the border color should be changed use the property `border-color`.

```
.border{ border-color:rgb(197, 162, 160) }
```

If you want to add a box shadow in that color use:

Here you see how a box with a 4 pixel `rgb(197, 162, 160)` colored shadow looks like.

```
.boxshadow{ -moz-box-shadow:4px 4px 4px  
4px rgb(197, 162, 160); -webkit-box-  
shadow:4px 4px 4px 4px rgb(197, 162, 160);  
box-shadow:4px 4px 4px 4px rgb(197, 162,  
160) }
```

Background

The CSS property to change the background color of an element to HunterLab 63.4421, 7.9670, 8.1512 is called "background". The background property can be set on classes, ids or directly on the HTML element.

```
.background, #background, body{  
background: rgb(197, 162, 160) }
```

If only the background color should be changed can be used:

```
.background{ background-color: rgb(197,  
162, 160) }
```

This example shows the color as background, it is applied via the CSS property "background".

To optimize and compress your CSS code, you can use our [online CSS compressor and optimizer](#) based on csstidy. If you want to create a linear or radial gradient as background or border, check our [CSS Gradient Generator](#).

Hey! You found this booklet interesting? Support Converting Colors with the new Membership Option!

The pro membership hides all ads, plus gives you double the colors in the color bucket, and more awesome pro features!

[Learn more, Memberships starting at \\$2.50/m!](#)

**Follow me
on Twitter!**

@ConvertingColor