

Converting Colors

HunterLab(63.4542, 11.2230,
17.8790)

Have a look what the booklet for
HunterLab(63.4542, 11.2230,
17.8790) contains.

HunterLab(63.5566, 11.3265, 17.9787)	3
<i>Conversions</i>	4
<i>Details</i>	6
<i>Harmonies</i>	12
<i>Previews</i>	24
<i>Color Blindness Simulation</i>	28
<i>CSS Examples</i>	31

Color

**HunterLab(63.5566, 11.3265,
17.9787)**

Conversions

Conversions Part 1

Format	Color
Hex	D39F87
RGB	211, 159, 135
RGB Percent	83%, 62%, 53%
CMY	0.1725, 0.3764, 0.4706
CMYK	0.00, 0.25, 0.36, 0.17
HSL	19°, 46%, 68%
HSV	19°, 36%, 83%
XYZ	43.6353, 40.3944, 28.4187
YIQ	171.8120, 38.6960, 3.5600

Conversions

Conversions Part 2

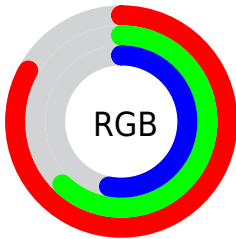
Format	Color
R _Y B	211, 170, 135
Decimal	13868935
CIE Lab	69.75, 16.11, 20.03
CIE LCh	70, 25.703, 51.201
Yxy	40.3963, 0.3880, 0.3592
Android (android.graphics.Color)	4292059015 (0xFFD39F87)
YUV	171.8120, -18.1483, 34.3679
Hunter-Lab	63.5566, 11.3265, 17.9787

Details

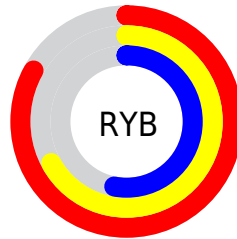
The HunterLab color **63.5566, 11.3265, 17.9787** is a light color, and the websafe version is hex **CC9999**. A complement of this color would be **67.3744, -13.2039, -12.9486**, and the grayscale version is **64.2143, -3.4263, 3.4889**.

A 20% lighter version of the original color is **85.4307, 5.8728, 19.7258**, and **42.5909, 11.0258, 14.4733** is the 20% darker color. If you saturate the color by 10%, you get **59.3137, 16.4438, 20.9529**, and if you desaturate by 10%, it is **68.0508, 6.5588, 14.6050**.

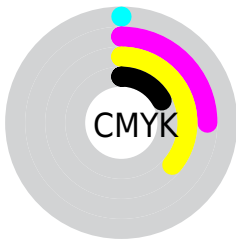
Distribution



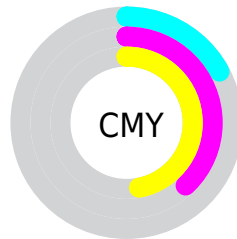
- Red (83%)
- Green (62%)
- Blue (53%)



- Red (83%)
- Yellow (67%)
- Blue (53%)



- Cyan (0%)
- Magenta (25%)
- Yellow (36%)
- Black (17%)



- Cyan (17%)
- Magenta (38%)
- Yellow (47%)

Brightness & Saturation Gradients

These gradients show how the HunterLab color 63.5566, 11.3265, 17.9787 changes by changing the brightness by 10 percent. The first figure shows a shift by +10% for each color and the second figure -10%.

Similar to the brightness gradients but the following saturation gradients show a change of the HunterLab color 63.5566, 11.3265, 17.9787 by changing the saturation by 10% instead.

63.5566, 11.3265,
17.9787

63.5566, 11.3265,
17.9787

186.4916, 10.6508,
32.4837

52.7709, 11.0938,
16.2662

87.0440, 11.5636,
21.2984

42.6742, 10.7781,
14.4981

99.6780, 11.5870,
22.9224

33.3189, 10.3646,
12.6533

112.8703, 11.5530,
24.5315

24.7692, 9.8366,
10.6984

126.5981, 11.4659,
26.1302

17.1097, 9.1718,
8.5794

140.8412, 11.3293,
27.7222

10.4593, 8.3406,
7.3215

155.5818, 11.1462,

0.0000, INF, NaN

29.3103

0.0000, NaN, NaN

170.8035, 10.9192,
30.8968

0.0000, NaN, NaN

■ 63.5566, 11.3265,
17.9787

■ 63.5566, 11.3265,
17.9787

■ 59.3137, 16.4438,
20.9529

■ 68.0508, 6.5588,
14.6050

■ 55.3504, 21.9149,
23.4467

■ 72.7633, 2.1340,
10.8950

■ 51.7052, 27.7029,
25.3737

■ 77.6709, -1.9745,
6.9040

■ 48.4179, 33.7283,
26.6463

■ 82.7528, -5.7950,
2.6754

■ 45.5287, 39.8495,
27.1958

■ 87.9912, -9.3567,
-1.7557

■ 43.0730, 45.8494,
27.0120

■ 93.1390, -13.9787,
-3.0778

■ 42.2150, 48.1122,
26.8550

■ 96.2231, -18.7351,
0.6696

Harmonies

Analogous

The Analogous color harmony consists of three colors that are next to each other on the color wheel.



63.5581, 18.9674, 10.7221



63.5566, 11.3265, 17.9787



63.5581, 0.0832, 21.1820

Triad

The Triadic color harmony groups three colors that are evenly spaced from another and form a triangle on the color wheel.



63.5581, 11.3239, 17.9796



63.5581, -24.1327, 6.6468



63.5581, 4.9468, -19.8997

Complementary

The Complementary color scheme is a pair of colors which are on the opposite of each other on the color wheel.



63.5566, 11.3265, 17.9787



67.3744, -13.2039, -12.9486

Split Complementary

Split-complementary colors differ from the complementary color scheme. The scheme consists of three colors, the original color and two neighbors of the complement color.



63.5581, -6.7994, -21.5291



63.5566, 11.3265, 17.9787



63.5581, -23.0373, -4.7759

Square

The Square scheme is like the rectangle color scheme, but the four colors are evenly spaced on the color wheel.



63.5581, 11.3239, 17.9796



63.5581, -19.9935, 15.4607



63.5581, -16.8849, -15.5795



63.5581, 15.1044, -11.4627

Rectangle

The Rectangle color scheme consists of four colors that form a rectangle on the color wheel.



63.5566, 11.3265, 17.9787



63.5581, -7.7057, 21.0750



63.5581, -16.8849, -15.5795



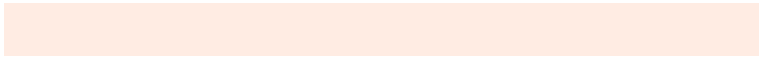
63.5581, 1.0343, -21.3154

Sweetspot

The Sweet Spot groups the original color and five complimentary colors.



63.5581, 11.3239, 17.9796



93.1046, 0.1035, 11.1165



59.0056, 31.7423, -11.0054



42.6899, 0.3724, 5.4551

0.0000, NaN, NaN



46.2646, -2.4686, 2.5136

Same Dimension

The Same Dimension uses a secret algorithm to generate beautiful new colors.



63.5581, 11.3239, 17.9796



74.8002, 18.7138, 25.0734



74.1539, -7.1677, 27.2404



35.2263, -0.2863, 3.8400



33.0430, 36.6713, 21.0029



8.6734, 6.4097, 5.4567

Inverse Universe

The Inverse Universe completely reimagines the original color for something new.



67.3744, -13.2039, -12.9486



80.4058, -17.5485, -20.5239



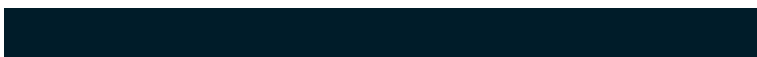
56.3303, 5.0046, -30.0680



35.7085, -3.3521, -0.0449



38.9003, -7.3086, -32.8448



9.9253, -2.8026, -6.3558

Previews

White Background



This preview shows how the HunterLab color 63.5566, 11.3265, 17.9787 looks on a white background.

Color Contrast Check

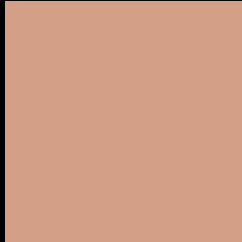
Large Text (above 18pt) WCAG AA × Fail

Any Text WCAG AA × Fail

Large Text (above 18pt) WCAG AAA × Fail

Any Text WCAG AAA × Fail

Black Background



This preview shows how the HunterLab color 63.5566, 11.3265, 17.9787 looks on a black background.

Color Contrast Check

Large Text (above 18pt) WCAG AA ✓ Pass

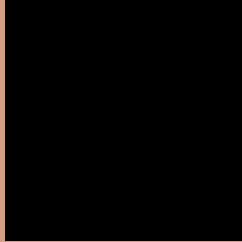
Any Text WCAG AA ✓ Pass

Large Text (above 18pt) WCAG AAA ✓ Pass

Any Text WCAG AAA ✓ Pass

If you want to check with other color combinations, try the [Color Contrast Checker](#).

HunterLab 63.5566, 11.3265, 17.9787 Background



This preview shows how black text looks on a background with the HunterLab color 63.5566, 11.3265, 17.9787.



This preview shows how white text looks on a background with the HunterLab color 63.5566, 11.3265,

17.9787.

Color Blindness Simulation

Color vision deficiency is a very complex topic, and I could not describe the different causes any better than Wikipedia does, so if you want to learn more, you should check out their [article about color blindness](#).

Dichromacy



Original Color

63.5566, 11.3265, 17.9787

Protanopia

63.6134, -4.2337, 15.9995

Deuteranopia

63.6801, 4.6014, 18.3205



Tritanopia

63.6333, 18.6199, 5.9226

Trichromacy



Original Color

63.5566, 11.3265, 17.9787

Protanomaly

63.4932, 1.2327, 16.6928

Deuteranomaly

63.5604, 7.0718, 18.2505

Tritanomaly

63.4741, 16.1582, 10.4291

Monochromacy



Original Color

63.5566, 11.3265, 17.9787

Achromatopsia

64.2295, -3.4271, 3.4897

Achromatomaly

63.7022, 1.5198, 8.7506

CSS Examples

Text

The CSS property to change the color of the text to HunterLab 63.5566, 11.3265, 17.9787 is called "color". The color property can be set on classes, ids or directly on the HTML element.

This example shows how text in the color `rgb(211, 159, 135)` looks like.

```
.text, #text, p{  
    color:rgb(211, 159, 135)  
}
```

If you want to add a text shadow in that color use the text-shadow property, you can generate a text shadow directly with our [CSS Text Shadow Generator](#).

Here you see how black text with a 4 pixel rgb(211, 159, 135) colored shadow looks like.

```
.shadow{ text-shadow: 4px 4px 2px rgb(211, 159, 135) }
```

Border

The CSS property to change the border of an element to HunterLab 63.5566, 11.3265, 17.9787 is called "border". The border property can be set on classes, ids or directly on the HTML element.

This example shows the color as border, it can be applied via the CSS property "border" or "border-color".

```
.border, #border, table{ border:4px solid rgb(211, 159, 135) }
```


If only the border color should be changed use the property `border-color`.

```
.border{ border-color:rgb(211, 159, 135) }
```

If you want to add a box shadow in that color use:

Here you see how a box with a 4 pixel `rgb(211, 159, 135)` colored shadow looks like.

```
.boxshadow{ -moz-box-shadow:4px 4px 4px  
4px rgb(211, 159, 135); -webkit-box-  
shadow:4px 4px 4px 4px rgb(211, 159, 135);  
box-shadow:4px 4px 4px 4px rgb(211, 159,  
135) }
```

Background

The CSS property to change the background color of an element to HunterLab 63.5566, 11.3265, 17.9787 is called "background". The background property can be set on classes, ids or directly on the HTML element.

```
.background, #background, body{  
background: rgb(211, 159, 135) }
```

If only the background color should be changed can be used:

```
.background{ background-color: rgb(211,  
159, 135) }
```

This example shows the color as background, it is applied via the CSS property "background".

To optimize and compress your CSS code, you can use our [online CSS compressor and optimizer](#) based on csstidy. If you want to create a linear or radial gradient as background or border, check our [CSS Gradient Generator](#).

Hey! You found this booklet interesting? Support Converting Colors with the new Membership Option!

The pro membership hides all ads, plus gives you double the colors in the color bucket, and more awesome pro features!

[Learn more, Memberships starting at \\$2.50/m!](#)

**Follow me
on Twitter!**

@ConvertingColor