

Converting Colors

HunterLab(63.4547, 36.0275,
4.6587)

Have a look what the booklet for
HunterLab(63.4547, 36.0275,
4.6587) contains.

HunterLab(63.4547, 36.0275, 4.6587)	3
<i>Conversions</i>	4
<i>Details</i>	6
<i>Harmonies</i>	12
<i>Previews</i>	24
<i>Color Blindness Simulation</i>	28
<i>CSS Examples</i>	31

Color

**HunterLab(63.4547, 36.0275,
4.6587)**

Conversions

Conversions Part 1

Format	Color
Hex	EF8DA9
RGB	239, 141, 169
RGB Percent	94%, 55%, 66%
CMY	0.0627, 0.4470, 0.3373
CMYK	0.00, 0.41, 0.29, 0.06
HSL	343°, 75%, 75%
HSV	343°, 41%, 94%
XYZ	52.2828, 40.2650, 42.5524
YIQ	173.4940, 49.4200, 29.4840

Conversions

Conversions Part 2

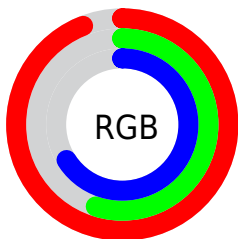
Format	Color
R _Y B	239, 141, 169
Decimal	15699369
CIE Lab	69.66, 40.46, 1.46
CIE LCh	70, 40.487, 2.072
Yxy	40.2669, 0.3870, 0.2980
Android (android.graphics.Color)	4293889449 (0xFFEF8DA9)
YUV	173.4940, -2.2155, 57.4488
Hunter-Lab	63.4547, 36.0275, 4.6587

Details

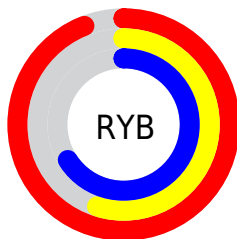
The HunterLab color $63.4547, 36.0275, 4.6587$ is a light color, and the websafe version is hex $FF99CC$. A complement of this color would be $84.9116, -35.8956, 8.6591$, and the grayscale version is $64.8448, -3.4600, 3.5231$.

A 20% lighter version of the original color is $81.3152, 21.0940, -0.9442$, and $42.5295, 33.6765, 3.3340$ is the 20% darker color. If you saturate the color by 10%, you get $57.7605, 46.1184, 5.9382$, and if you desaturate by 10%, it is $69.8395, 25.7796, 4.0141$.

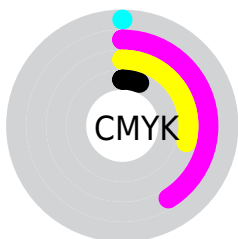
Distribution



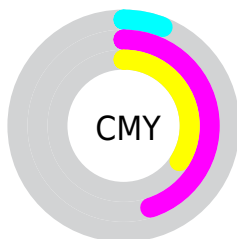
- Red (94%)
- Green (55%)
- Blue (66%)



- Red (94%)
- Yellow (55%)
- Blue (66%)



- Cyan (0%)
- Magenta (41%)
- Yellow (29%)
- Black (6%)



- Cyan (6%)
- Magenta (45%)
- Yellow (34%)

Brightness & Saturation Gradients

These gradients show how the HunterLab color 63.4547, 36.0275, 4.6587 changes by changing the brightness by 10 percent. The first figure shows a shift by +10% for each color and the second figure -10%.

Similar to the brightness gradients but the following saturation gradients show a change of the HunterLab color 63.4547, 36.0275, 4.6587 by changing the saturation by 10% instead.

63.4547, 36.0275,
4.6587

63.4547, 36.0275,
4.6587

186.3458, 43.4877,
11.8790

52.6752, 34.7475,
3.9991

86.9309, 38.2613,
6.0737

42.5850, 33.3539,
3.3706

99.5597, 39.2374,
6.8242

33.2368, 31.8370,
2.7760

112.7469, 40.1280,
7.6023

24.6948, 30.1979,
2.2170

126.4699, 40.9392,
8.4073

17.0440, 28.4645,
1.6950

140.7084, 41.6763,
9.2381

10.4035, 26.7663,
1.2111

155.4445, 42.3440,

0.0000, INF, NaN

10.0942

0.0000, NaN, NaN

170.6619, 42.9466,
10.9747

0.0000, NaN, NaN

■ 63.4547, 36.0275,
4.6587

■ 63.4547, 36.0275,
4.6587

■ 57.7605, 46.1184,
5.9382

■ 69.8395, 25.7796,
4.0141

■ 52.8781, 55.6297,
7.9154

■ 76.7993, 15.6295,
3.9082

■ 48.9363, 63.9160,
10.5889

■ 84.2440, 5.6898,
4.2502

■ 46.0354, 70.2144,
13.8345

■ 92.0993, -4.0005,
4.9592

■ 44.2044, 73.9092,
17.3817

■ 98.5138, -10.5865,
3.9026

■ 43.3261, 75.1683,
20.4686

■ 98.5346, -10.4714,
3.6061

Harmonies

Analogous

The Analogous color harmony consists of three colors that are next to each other on the color wheel.



63.4562, 31.0321, -14.4383



63.4547, 36.0275, 4.6587



63.4562, 29.4972, 18.8656

Triad

The Triadic color harmony groups three colors that are evenly spaced from another and form a triangle on the color wheel.



63.4562, 36.0244, 4.6600



63.4562, -21.1211, 25.8846



63.4562, -19.1398, -34.1049

Complementary

The Complementary color scheme is a pair of colors which are on the opposite of each other on the color wheel.



63.4547, 36.0275, 4.6587



84.9116, -35.8956, 8.6591

Split Complementary

Split-complementary colors differ from the complementary color scheme. The scheme consists of three colors, the original color and two neighbors of the complement color.



63.4562, -30.6983, -17.1654



63.4547, 36.0275, 4.6587



63.4562, -31.7472, 17.2943

Square

The Square scheme is like the rectangle color scheme, but the four colors are evenly spaced on the color wheel.



63.4562, 36.0244, 4.6600



63.4562, -4.6645, 28.7412



63.4562, -35.0457, 2.2240



63.4562, -2.1038, -40.2809

Rectangle

The Rectangle color scheme consists of four colors that form a rectangle on the color wheel.



63.4547, 36.0275, 4.6587



63.4562, 19.8807, 24.6965



63.4562, -35.0457, 2.2240



63.4562, -23.7245, -29.2812

Sweetspot

The Sweet Spot groups the original color and five complimentary colors.



63.4562, 36.0244, 4.6600



89.8209, 7.2249, 4.5166



62.3914, 38.3580, -38.4853



41.0598, 3.9862, 2.0586

0.0000, NaN, NaN



46.2646, -2.4686, 2.5136

Same Dimension

The Same Dimension uses a secret algorithm to generate beautiful new colors.



63.4562, 36.0244, 4.6600



63.2316, 47.6809, 6.0850



67.5470, 22.0644, 19.8873



39.7908, 1.9550, 2.0201



32.2382, 55.9906, 14.7720



9.3868, 16.4746, 2.9697

Inverse Universe

The Inverse Universe completely reimagines the original color for something new.



63.4562, 36.0244, 4.6600



63.2316, 47.6809, 6.0850



79.2262, -21.4834, -12.6697



39.7908, 1.9550, 2.0201



32.2382, 55.9906, 14.7720



9.3868, 16.4746, 2.9697

Previews

White Background



This preview shows how the HunterLab color 63.4547, 36.0275, 4.6587 looks on a white background.

Color Contrast Check

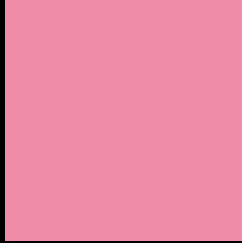
Large Text (above 18pt) WCAG AA × Fail

Any Text WCAG AA × Fail

Large Text (above 18pt) WCAG AAA × Fail

Any Text WCAG AAA × Fail

Black Background



This preview shows how the HunterLab color 63.4547, 36.0275, 4.6587 looks on a black background.

Color Contrast Check

Large Text (above 18pt) WCAG AA ✓ Pass

Any Text WCAG AA ✓ Pass

Large Text (above 18pt) WCAG AAA ✓ Pass

Any Text WCAG AAA ✓ Pass

If you want to check with other color combinations, try the [Color Contrast Checker](#).

HunterLab 63.4547, 36.0275, 4.6587 Background



This preview shows how black text looks on a background with the HunterLab color 63.4547, 36.0275, 4.6587.



This preview shows how white text looks on a background with the HunterLab color 63.4547, 36.0275,

4.6587.

Color Blindness Simulation

Color vision deficiency is a very complex topic, and I could not describe the different causes any better than Wikipedia does, so if you want to learn more, you should check out their [article about color blindness](#).

Dichromacy



Original Color

63.4547, 36.0275, 4.6587

Protanopia

63.5265, -0.4264, -4.2192

Deuteranopia

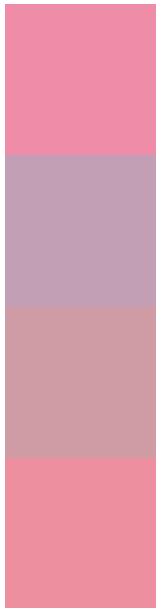
63.5969, 4.4355, 6.0792



Tritanopia

63.6056, 31.9992, 11.2561

Trichromacy



Original Color

63.4547, 36.0275, 4.6587

Protanomaly

62.8975, 11.6336, -1.7427

Deuteranomaly

63.0837, 15.5296, 5.2369

Tritanomaly

63.5022, 33.1852, 9.0855

Monochromacy



Original Color

63.4547, 36.0275, 4.6587

Achromatopsia

64.6440, -3.4492, 3.5122

Achromatomaly

63.5127, 10.3132, 2.8820

CSS Examples

Text

The CSS property to change the color of the text to HunterLab 63.4547, 36.0275, 4.6587 is called "color". The color property can be set on classes, ids or directly on the HTML element.

This example shows how text in the color `rgb(239, 141, 169)` looks like.

```
.text, #text, p{  
    color:rgb(239, 141, 169)  
}
```

If you want to add a text shadow in that color use the text-shadow property, you can generate a text shadow directly with our [CSS Text Shadow Generator](#).

Here you see how black text with a 4 pixel rgb(239, 141, 169) colored shadow looks like.

```
.shadow{ text-shadow: 4px 4px 2px rgb(239, 141, 169) }
```

Border

The CSS property to change the border of an element to HunterLab 63.4547, 36.0275, 4.6587 is called "border". The border property can be set on classes, ids or directly on the HTML element.

This example shows the color as border, it can be applied via the CSS property "border" or "border-color".

```
.border, #border, table{ border:4px solid rgb(239, 141, 169) }
```


If only the border color should be changed use the property `border-color`.

```
.border{ border-color:rgb(239, 141, 169) }
```

If you want to add a box shadow in that color use:

Here you see how a box with a 4 pixel `rgb(239, 141, 169)` colored shadow looks like.

```
.boxshadow{ -moz-box-shadow:4px 4px 4px  
4px rgb(239, 141, 169); -webkit-box-  
shadow:4px 4px 4px 4px rgb(239, 141, 169);  
box-shadow:4px 4px 4px 4px rgb(239, 141,  
169) }
```

Background

The CSS property to change the background color of an element to HunterLab 63.4547, 36.0275, 4.6587 is called "background". The background property can be set on classes, ids or directly on the HTML element.

```
.background, #background, body{  
background: rgb(239, 141, 169) }
```

If only the background color should be changed can be used:

```
.background{ background-color: rgb(239,  
141, 169) }
```

This example shows the color as background, it is applied via the CSS property "background".

To optimize and compress your CSS code, you can use our [online CSS compressor and optimizer](#) based on csstidy. If you want to create a linear or radial gradient as background or border, check our [CSS Gradient Generator](#).

Hey! You found this booklet interesting? Support Converting Colors with the new Membership Option!

The pro membership hides all ads, plus gives you double the colors in the color bucket, and more awesome pro features!

[Learn more, Memberships starting at \\$2.50/m!](#)

**Follow me
on Twitter!**

@ConvertingColor