

Converting Colors

HunterLab(63.4554, 1.4256,
17.5119)

Have a look what the booklet for
HunterLab(63.4554, 1.4256,
17.5119) contains.

HunterLab(63.5511, 1.3395, 17.4526)	3
<i>Conversions</i>	4
<i>Details</i>	6
<i>Harmonies</i>	12
<i>Previews</i>	24
<i>Color Blindness Simulation</i>	28
<i>CSS Examples</i>	31

Color

**HunterLab(63.5511, 1.3395,
17.4526)**

Conversions

Conversions Part 1

Format	Color
Hex	C1A688
RGB	193, 166, 136
RGB Percent	76%, 65%, 53%
CMY	0.2431, 0.3490, 0.4667
CMYK	0.00, 0.14, 0.30, 0.24
HSL	32°, 31%, 65%
HSV	32°, 30%, 76%
XYZ	40.0724, 40.3874, 28.9760
YIQ	170.6530, 25.7220, -3.6060

Conversions

Conversions Part 2

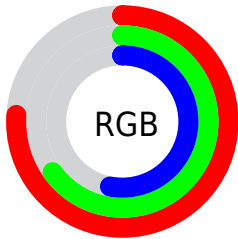
Format	Color
RYB	187, 193, 136
Decimal	12691080
CIELab	69.75, 5.33, 19.19
CIELCh	70, 19.919, 74.481
Yxy	40.3893, 0.3662, 0.3691
Android (android.graphics.Color)	4290881160 (0xFFC1A688)
YUV	170.6530, -17.0839, 19.5983
Hunter-Lab	63.5511, 1.3395, 17.4526

Details

The HunterLab color $63.5511, 1.3395, 17.4526$ is a light color, and the websafe version is hex $CC9966$. A complement of this color would be $59.3951, -5.1398, -13.8539$, and the grayscale version is $63.7339, -3.4007, 3.4628$.

A 20% lighter version of the original color is $87.0121, 0.4915, 20.8197$, and $42.6562, 2.1165, 14.0843$ is the 20% darker color. If you saturate the color by 10%, you get $60.5663, 3.7021, 21.0005$, and if you desaturate by 10%, it is $66.6564, -0.7156, 13.3594$.

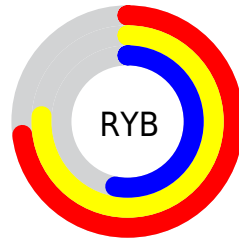
Distribution



Red (76%)

Green (65%)

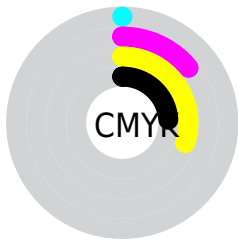
Blue (53%)



Red (73%)

Yellow (76%)

Blue (53%)

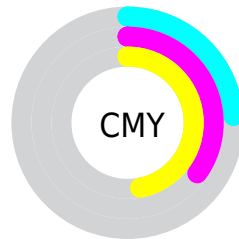


Cyan (0%)

Magenta (14%)

Yellow (30%)

Black (24%)



Cyan (24%)

Magenta (35%)

Yellow (47%)

Brightness & Saturation Gradients

These gradients show how the HunterLab color 63.5511, 1.3395, 17.4526 changes by changing the brightness by 10 percent. The first figure shows a shift by +10% for each color and the second figure -10%.

Similar to the brightness gradients but the following saturation gradients show a change of the HunterLab color 63.5511, 1.3395, 17.4526 by changing the saturation by 10% instead.

■ 63.5511, 1.3395,
17.4526

■ 63.5511, 1.3395,
17.4526

186.4837, -3.2358,
31.6084

■ 52.7657, 1.6374,
15.7913

■ 87.0379, 0.5916,
20.6800

■ 42.6693, 1.8824,
14.0790

■ 99.6716, 0.1535,
22.2619

■ 33.3144, 2.0654,
12.2957

■ 112.8636, -0.3242,
23.8311

■ 24.7652, 2.1769,
10.4095

126.5911, -0.8392,
25.3919

■ 17.1062, 2.2032,
8.3687

140.8340, -1.3895,
26.9475

■ 10.4562, 2.1220,
7.3194

155.5743, -1.9734,

0.0000, INF, NaN

28.5008

0.0000, NaN, NaN

170.7958, -2.5892,
30.0538

0.0000, NaN, NaN

■ 63.5511, 1.3395,
17.4526

■ 63.5511, 1.3395,
17.4526

■ 60.5663, 3.7021,
21.0005

■ 66.6564, -0.7156,
13.3594

■ 57.7072, 6.3940,
23.9503

■ 69.8692, -2.4748,
8.7672

■ 54.9851, 9.4229,
26.2540

■ 73.1827, -3.9600,
3.7226

■ 52.4103, 12.7902,
27.8686

■ 76.5896, -5.1912,
-1.7323

■ 49.9929, 16.4846,
28.7656

■ 80.0833, -6.1878,
-7.5597

■ 47.7417, 20.4764,
28.9431

■ 83.6578, -6.9684,
-13.7254

■ 45.6576, 24.6818,
28.5325

■ 86.6864, -10.9868,
-11.4845

■ 45.5636, 24.8785,
28.5116

■ 89.6475, -15.6184,
-7.6036

■ 92.6601, -20.1932,
-3.7930

Harmonies

Analogous

The Analogous color harmony consists of three colors that are next to each other on the color wheel.



63.5526, 9.5279, 14.0165



63.5511, 1.3395, 17.4526



63.5526, -7.6953, 17.5122

Triad

The Triadic color harmony groups three colors that are evenly spaced from another and form a triangle on the color wheel.



63.5526, 1.3373, 17.4535



63.5526, -19.4079, -0.8289



63.5526, 9.2874, -9.5463

Complementary

The Complementary color scheme is a pair of colors which are on the opposite of each other on the color wheel.



63.5511, 1.3395, 17.4526



59.3951, -5.1398, -13.8539

Split Complementary

Split-complementary colors differ from the complementary color scheme. The scheme consists of three colors, the original color and two neighbors of the complement color.



63.5526, 1.0240, -14.7828



63.5511, 1.3395, 17.4526



63.5526, -15.3602, -9.2917

Square

The Square scheme is like the rectangle color scheme, but the four colors are evenly spaced on the color wheel.



63.5526, 1.3373, 17.4535



63.5526, -19.3345, 7.7382



63.5526, -7.9916, -14.6836



63.5526, 14.2902, -1.1394

Rectangle

The Rectangle color scheme consists of four colors that form a rectangle on the color wheel.



63.5511, 1.3395, 17.4526



63.5526, -12.9657, 15.6671



63.5526, -7.9916, -14.6836



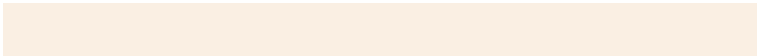
63.5526, 6.7792, -11.7848

Sweetspot

The Sweet Spot groups the original color and five complimentary colors.



63.5526, 1.3373, 17.4535



93.6763, -3.3966, 11.4794



56.2230, 20.5303, -1.8101



43.0921, -1.4251, 5.7546



98.8636, -5.2751, 5.3714



45.2661, -2.4153, 2.4594

Same Dimension

The Same Dimension uses a secret algorithm to generate beautiful new colors.



63.5526, 1.3373, 17.4535



82.6279, 3.6419, 26.3052



71.5056, -12.1398, 24.5351



33.0692, -1.1829, 4.1092



37.3756, 19.8022, 23.3774



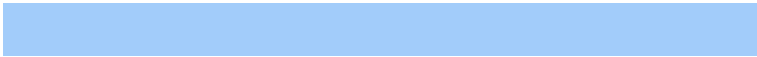
8.6070, 2.3482, 5.3447

Inverse Universe

The Inverse Universe completely reimagines the original color for something new.



59.3951, -5.1398, -13.8539



75.9880, -6.6283, -23.7966



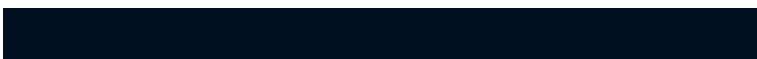
51.7428, 8.5909, -25.7770



32.4301, -2.1907, -0.6864



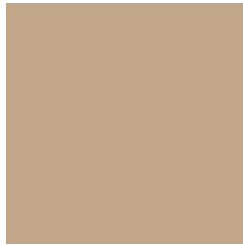
27.8236, 8.9994, -54.2042



6.8732, -0.1466, -8.2744

Previews

White Background



This preview shows how the HunterLab color 63.5511, 1.3395, 17.4526 looks on a white background.

Color Contrast Check

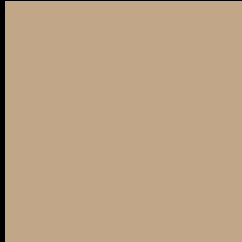
Large Text (above 18pt) WCAG AA × Fail

Any Text WCAG AA × Fail

Large Text (above 18pt) WCAG AAA × Fail

Any Text WCAG AAA × Fail

Black Background



This preview shows how the HunterLab color 63.5511, 1.3395, 17.4526 looks on a black background.

Color Contrast Check

Large Text (above 18pt) WCAG AA ✓ Pass

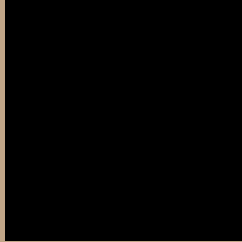
Any Text WCAG AA ✓ Pass

Large Text (above 18pt) WCAG AAA ✓ Pass

Any Text WCAG AAA ✓ Pass

If you want to check with other color combinations, try the [Color Contrast Checker](#).

HunterLab 63.5511, 1.3395, 17.4526 Background



This preview shows how black text looks on a background with the HunterLab color 63.5511, 1.3395, 17.4526.



This preview shows how white text looks on a background with the HunterLab color 63.5511, 1.3395,

Color Blindness Simulation

Color vision deficiency is a very complex topic, and I could not describe the different causes any better than Wikipedia does, so if you want to learn more, you should check out their [article about color blindness](#).

Dichromacy



Original Color

63.5511, 1.3395, 17.4526

Protanopia

63.5674, -4.4862, 16.6646

Deuteranopia

63.6165, 4.4768, 17.5701



Tritanopia

63.5430, 10.4729, 2.4493

Trichromacy



Original Color

63.5511, 1.3395, 17.4526

Protanomaly

63.6368, -2.7809, 17.1137

Deuteranomaly

63.6853, 3.2573, 17.6146

Tritanomaly

63.6146, 7.1063, 8.3267

Monochromacy



Original Color

63.5511, 1.3395, 17.4526

Achromatopsia

63.8154, -3.4050, 3.4672

Achromatomaly

63.5832, -1.9248, 8.9824

CSS Examples

Text

The CSS property to change the color of the text to HunterLab 63.5511, 1.3395, 17.4526 is called "color". The color property can be set on classes, ids or directly on the HTML element.

This example shows how text in the color `rgb(193, 166, 136)` looks like.

```
.text, #text, p{  
    color:rgb(193, 166, 136)  
}
```

If you want to add a text shadow in that color use the text-shadow property, you can generate a text shadow directly with our [CSS Text Shadow Generator](#).

Here you see how black text with a 4 pixel rgb(193, 166, 136) colored shadow looks like.

```
.shadow{ text-shadow: 4px 4px 2px rgb(193, 166, 136) }
```

Border

The CSS property to change the border of an element to HunterLab 63.5511, 1.3395, 17.4526 is called "border". The border property can be set on classes, ids or directly on the HTML element.

This example shows the color as border, it can be applied via the CSS property "border" or "border-color".

```
.border, #border, table{ border:4px solid rgb(193, 166, 136) }
```


If only the border color should be changed use the property `border-color`.

```
.border{ border-color:rgb(193, 166, 136) }
```

If you want to add a box shadow in that color use:

Here you see how a box with a 4 pixel `rgb(193, 166, 136)` colored shadow looks like.

```
.boxshadow{ -moz-box-shadow:4px 4px 4px  
4px rgb(193, 166, 136); -webkit-box-  
shadow:4px 4px 4px 4px rgb(193, 166, 136);  
box-shadow:4px 4px 4px 4px rgb(193, 166,  
136) }
```

Background

The CSS property to change the background color of an element to HunterLab 63.5511, 1.3395, 17.4526 is called "background". The background property can be set on classes, ids or directly on the HTML element.

```
.background, #background, body{  
background: rgb(193, 166, 136) }
```

If only the background color should be changed can be used:

```
.background{ background-color: rgb(193,  
166, 136) }
```

This example shows the color as background, it is applied via the CSS property "background".

To optimize and compress your CSS code, you can use our [online CSS compressor and optimizer](#) based on csstidy. If you want to create a linear or radial gradient as background or border, check our [CSS Gradient Generator](#).

Hey! You found this booklet interesting? Support Converting Colors with the new Membership Option!

The pro membership hides all ads, plus gives you double the colors in the color bucket, and more awesome pro features!

[Learn more, Memberships starting at \\$2.50/m!](#)

**Follow me
on Twitter!**

@ConvertingColor