

Converting Colors

HunterLab(63.4662, 44.9094,
11.0800)

Have a look what the booklet for
HunterLab(63.4662, 44.9094,
11.0800) contains.

HunterLab(63.5623, 44.7484, 11.0241)	3
<i>Conversions</i>	4
<i>Details</i>	6
<i>Harmonies</i>	12
<i>Previews</i>	24
<i>Color Blindness Simulation</i>	28
<i>CSS Examples</i>	31

Color

**HunterLab(63.5623, 44.7484,
11.0241)**

Conversions

Conversions Part 1

Format	Color
Hex	FF859B
RGB	255, 133, 155
RGB Percent	100%, 52%, 61%
CMY	0.0000, 0.4784, 0.3922
CMYK	0.00, 0.48, 0.39, 0.00
HSL	349°, 100%, 76%
HSV	349°, 48%, 100%
XYZ	55.5440, 40.4017, 35.8812
YIQ	171.9860, 65.6500, 32.7060

Conversions

Conversions Part 2

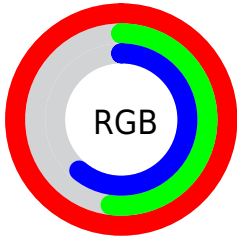
Format	Color
R _Y B	255, 133, 155
Decimal	16745883
CIE Lab	69.76, 48.39, 9.71
CIE LCh	70, 49.355, 11.347
Yxy	40.4037, 0.4213, 0.3065
Android (android.graphics.Color)	4294935963 (0xFFFF859B)
YUV	171.9860, -8.3741, 72.8033
Hunter-Lab	63.5623, 44.7484, 11.0241

Details

The HunterLab color **63.5623, 44.7484, 11.0241** is a light color, and the websafe version is hex **FF9999**. A complement of this color would be **90.7693, -40.5738, 4.8629**, and the grayscale version is **64.2397, -3.4277, 3.4903**.

A 20% lighter version of the original color is **78.9041, 22.4150, 3.6860**, and **42.6539, 41.6959, 8.8083** is the 20% darker color. If you saturate the color by 10%, you get **57.9703, 55.1606, 13.5821**, and if you desaturate by 10%, it is **70.0129, 33.9692, 8.9950**.

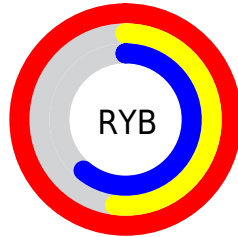
Distribution



Red (100%)

Green (52%)

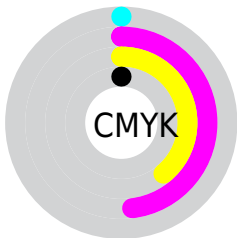
Blue (61%)



Red (100%)

Yellow (52%)

Blue (61%)

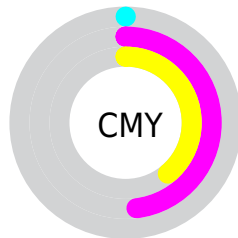


Cyan (0%)

Magenta (48%)

Yellow (39%)

Black (0%)



Cyan (0%)

Magenta (48%)

Yellow (39%)

Brightness & Saturation Gradients

These gradients show how the HunterLab color 63.5623, 44.7484, 11.0241 changes by changing the brightness by 10 percent. The first figure shows a shift by +10% for each color and the second figure -10%.

Similar to the brightness gradients but the following saturation gradients show a change of the HunterLab color 63.5623, 44.7484, 11.0241 by changing the saturation by 10% instead.

63.5623, 44.7484,
11.0241

63.5623, 44.7484,
11.0241

186.4999, 54.6272,
21.3589

52.7764, 43.1789,
9.9206

87.0505, 47.5533,
13.2469

42.6793, 41.4996,
8.8136

99.6848, 48.8091,
14.3696

33.3236, 39.7086,
7.6966

112.8773, 49.9742,
15.5027

24.7735, 37.8251,
6.5570

126.6054, 51.0545,
16.6475

17.1135, 35.9194,
5.3729

140.8488, 52.0554,
17.8049

10.4625, 34.2392,
4.5065

155.5896, 52.9816,

0.0000, INF, NaN

18.9757

0.0000, INF, NaN

170.8116, 53.8376,
20.1602

0.0000, NaN, NaN

■ 63.5623, 44.7484,
11.0241

■ 63.5623, 44.7484,
11.0241

■ 57.9703, 55.1606,
13.5821

■ 70.0129, 33.9692,
8.9950

■ 53.3783, 64.5932,
16.6050

■ 77.1793, 23.2192,
7.4738

■ 49.9156, 72.2231,
19.9154

■ 84.9453, 12.6917,
6.4076

■ 47.6449, 77.2704,
23.2110

■ 93.2148, 2.4642,
5.7314

■ 46.4909, 79.4607,
26.1195

100.0000, -5.3358,
5.4332

■ 46.3217, 79.7528,
26.6346

Harmonies

Analogous

The Analogous color harmony consists of three colors that are next to each other on the color wheel.



63.5639, 42.9294, -11.1363



63.5623, 44.7484, 11.0241



63.5639, 32.3937, 25.0601

Triad

The Triadic color harmony groups three colors that are evenly spaced from another and form a triangle on the color wheel.



63.5639, 44.7446, 11.0254



63.5639, -29.4887, 27.2243



63.5639, -16.6297, -49.0858

Complementary

The Complementary color scheme is a pair of colors which are on the opposite of each other on the color wheel.



63.5623, 44.7484, 11.0241



90.7693, -40.5738, 4.8629

Split Complementary

Split-complementary colors differ from the complementary color scheme. The scheme consists of three colors, the original color and two neighbors of the complement color.



63.5639, -32.6824, -30.1125



63.5623, 44.7484, 11.0241



63.5639, -39.3640, 15.2498

Square

The Square scheme is like the rectangle color scheme, but the four colors are evenly spaced on the color wheel.



63.5639, 44.7446, 11.0254



63.5639, -11.6726, 32.0020



63.5639, -40.4456, -5.1674



63.5639, 5.3291, -51.4538

Rectangle

The Rectangle color scheme consists of four colors that form a rectangle on the color wheel.



63.5623, 44.7484, 11.0241



63.5639, 18.6730, 29.9887



63.5639, -40.4456, -5.1674



63.5639, -22.8107, -44.1946

Sweetspot

The Sweet Spot groups the original color and five complimentary colors.



63.5639, 44.7446, 11.0254



88.0660, 8.7270, 6.1053



64.2334, 54.1150, -46.7990



39.9281, 5.0655, 2.9000

0.0000, NaN, NaN



46.2646, -2.4686, 2.5136

Same Dimension

The Same Dimension uses a secret algorithm to generate beautiful new colors.



63.5639, 44.7446, 11.0254



58.4037, 54.3130, 13.3478



72.3334, 21.8706, 26.7633



42.4742, 1.9175, 2.6924



33.5069, 57.7345, 18.9149



10.5212, 18.2585, 4.9330

Inverse Universe

The Inverse Universe completely reimagines the original color for something new.



63.5639, 44.7446, 11.0254



58.4037, 54.3130, 13.3478



78.4272, -18.0432, -23.5117



42.4742, 1.9175, 2.6924



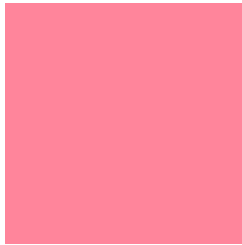
33.5069, 57.7345, 18.9149



10.5212, 18.2585, 4.9330

Previews

White Background



This preview shows how the HunterLab color 63.5623, 44.7484, 11.0241 looks on a white background.

Color Contrast Check

Large Text (above 18pt) WCAG AA × Fail

Any Text WCAG AA × Fail

Large Text (above 18pt) WCAG AAA × Fail

Any Text WCAG AAA × Fail

Black Background



This preview shows how the HunterLab color 63.5623, 44.7484, 11.0241 looks on a black background.

Color Contrast Check

Large Text (above 18pt) WCAG AA ✓ Pass

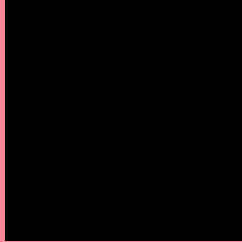
Any Text WCAG AA ✓ Pass

Large Text (above 18pt) WCAG AAA ✓ Pass

Any Text WCAG AAA ✓ Pass

If you want to check with other color combinations, try the [Color Contrast Checker](#).

HunterLab 63.5623, 44.7484, 11.0241 Background



This preview shows how black text looks on a background with the HunterLab color 63.5623, 44.7484, 11.0241.

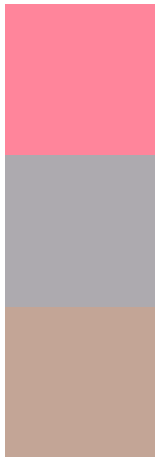


This preview shows how white text looks on a background with the HunterLab color 63.5623, 44.7484,

Color Blindness Simulation

Color vision deficiency is a very complex topic, and I could not describe the different causes any better than Wikipedia does, so if you want to learn more, you should check out their [article about color blindness](#).

Dichromacy



Original Color

63.5623, 44.7484, 11.0241

Protanopia

63.8191, -1.6336, 1.6173

Deuteranopia

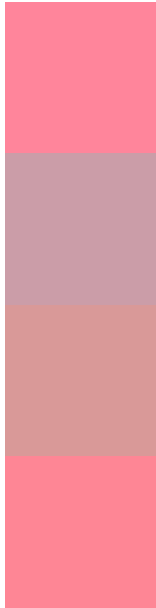
63.8078, 4.3354, 12.5828



Tritanopia

63.5949, 42.0961, 14.9491

Trichromacy



Original Color

63.5623, 44.7484, 11.0241

Protanomaly

62.9584, 13.8728, 4.1503

Deuteranomaly

63.0882, 18.8245, 11.2868

Tritanomaly

63.4752, 43.0874, 13.3084

Monochromacy



Original Color

63.5623, 44.7484, 11.0241

Achromatopsia

64.2295, -3.4271, 3.4897

Achromatomaly

63.0583, 12.6905, 5.1579

CSS Examples

Text

The CSS property to change the color of the text to HunterLab 63.5623, 44.7484, 11.0241 is called "color". The color property can be set on classes, ids or directly on the HTML element.

This example shows how text in the color `rgb(255, 133, 155)` looks like.

```
.text, #text, p{  
    color:rgb(255, 133, 155)  
}
```

If you want to add a text shadow in that color use the text-shadow property, you can generate a text shadow directly with our [CSS Text Shadow Generator](#).

Here you see how black text with a 4 pixel rgb(255, 133, 155) colored shadow looks like.

```
.shadow{ text-shadow: 4px 4px 2px rgb(255, 133, 155) }
```

Border

The CSS property to change the border of an element to HunterLab 63.5623, 44.7484, 11.0241 is called "border". The border property can be set on classes, ids or directly on the HTML element.

This example shows the color as border, it can be applied via the CSS property "border" or "border-color".

```
.border, #border, table{ border:4px solid rgb(255, 133, 155) }
```


If only the border color should be changed use the property `border-color`.

```
.border{ border-color:rgb(255, 133, 155) }
```

If you want to add a box shadow in that color use:

Here you see how a box with a 4 pixel `rgb(255, 133, 155)` colored shadow looks like.

```
.boxshadow{ -moz-box-shadow:4px 4px 4px  
4px rgb(255, 133, 155); -webkit-box-  
shadow:4px 4px 4px 4px rgb(255, 133, 155);  
box-shadow:4px 4px 4px 4px rgb(255, 133,  
155) }
```

Background

The CSS property to change the background color of an element to HunterLab 63.5623, 44.7484, 11.0241 is called "background". The background property can be set on classes, ids or directly on the HTML element.

```
.background, #background, body{  
background: rgb(255, 133, 155) }
```

If only the background color should be changed can be used:

```
.background{ background-color: rgb(255,  
133, 155) }
```

This example shows the color as background, it is applied via the CSS property "background".

To optimize and compress your CSS code, you can use our [online CSS compressor and optimizer](#) based on csstidy. If you want to create a linear or radial gradient as background or border, check our [CSS Gradient Generator](#).

Hey! You found this booklet interesting? Support Converting Colors with the new Membership Option!

The pro membership hides all ads, plus gives you double the colors in the color bucket, and more awesome pro features!

[Learn more, Memberships starting at \\$2.50/m!](#)

**Follow me
on Twitter!**

@ConvertingColor