

Converting Colors

HunterLab(63.4857, 13.7196,
14.1021)

Have a look what the booklet for
HunterLab(63.4857, 13.7196,
14.1021) contains.

HunterLab(63.3927, 14.0742, 13.8745)	3
<i>Conversions</i>	4
<i>Details</i>	6
<i>Harmonies</i>	12
<i>Previews</i>	24
<i>Color Blindness Simulation</i>	28
<i>CSS Examples</i>	31

Color

**HunterLab(63.3927, 14.0742,
13.8745)**

Conversions

Conversions Part 1

Format	Color
Hex	D49D92
RGB	212, 157, 146
RGB Percent	83%, 62%, 57%
CMY	0.1686, 0.3843, 0.4274
CMYK	0.00, 0.26, 0.31, 0.17
HSL	10°, 43%, 70%
HSV	10°, 31%, 83%
XYZ	44.3967, 40.1863, 32.6109
YIQ	172.1910, 36.3110, 8.2390

Conversions

Conversions Part 2

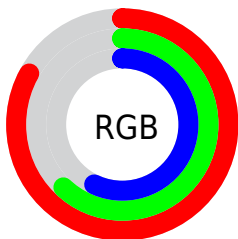
Format	Color
R _Y B	212, 159, 146
Decimal	13933970
CIE Lab	69.60, 18.97, 13.78
CIE LCh	70, 23.447, 35.989
Yxy	40.1882, 0.3788, 0.3429
Android (android.graphics.Color)	4292124050 (0xFFD49D92)
YUV	172.1910, -12.9122, 34.9125
Hunter-Lab	63.3927, 14.0742, 13.8745

Details

The HunterLab color **63.3927, 14.0742, 13.8745** is a light color, and the websafe version is hex **CC9999**. A complement of this color would be **72.5507, -17.1739, -6.4980**, and the grayscale version is **64.3511, -3.4336, 3.4963**.

A 20% lighter version of the original color is **85.1570, 8.6227, 14.5790**, and **42.4448, 13.5031, 10.9324** is the 20% darker color. If you saturate the color by 10%, you get **58.3409, 20.6621, 16.6610**, and if you desaturate by 10%, it is **68.7943, 7.8167, 10.9350**.

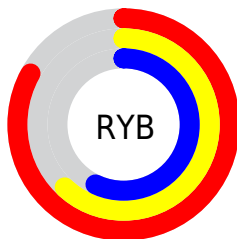
Distribution



Red (83%)

Green (62%)

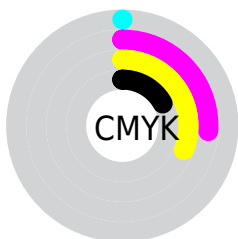
Blue (57%)



Red (83%)

Yellow (62%)

Blue (57%)

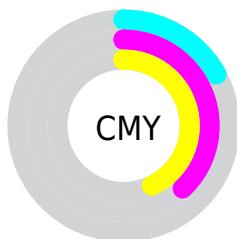


Cyan (0%)

Magenta (26%)

Yellow (31%)

Black (17%)



Cyan (17%)

Magenta (38%)

Yellow (43%)

Brightness & Saturation Gradients

These gradients show how the HunterLab color 63.3927, 14.0742, 13.8745 changes by changing the brightness by 10 percent. The first figure shows a shift by +10% for each color and the second figure -10%.

Similar to the brightness gradients but the following saturation gradients show a change of the HunterLab color 63.3927, 14.0742, 13.8745 by changing the saturation by 10% instead.

63.3927, 14.0742,
13.8745

63.3927, 14.0742,
13.8745

186.2569, 14.4135,
25.8185

52.6169, 13.7058,
12.5369

86.8620, 14.5656,
16.5192

42.5307, 13.2478,
11.1761

99.4876, 14.7086,
17.8351

33.1868, 12.6844,
9.7798

112.6718, 14.7901,
19.1518

24.6495, 11.9984,
8.3270

126.3918, 14.8146,
20.4719

17.0040, 11.1680,
6.7822

140.6275, 14.7860,
21.7972

10.3695, 10.1682,
6.1476

155.3609, 14.7077,

0.0000, INF, NaN

23.1294

0.0000, NaN, NaN

170.5756, 14.5827,
24.4695

0.0000, NaN, NaN

■ 63.3927, 14.0742,
13.8745

■ 63.3927, 14.0742,
13.8745

■ 58.3409, 20.6621,
16.6610

■ 68.7943, 7.8167,
10.9350

■ 53.6916, 27.5506,
19.2215

■ 74.4931, 1.8959,
7.8877

■ 49.5126, 34.6338,
21.4606

■ 80.4514, -3.7131,
4.7655

■ 45.8769, 41.7113,
23.2569

■ 86.6366, -9.0412,
1.5894

■ 42.8569, 48.4638,
24.4793

■ 93.0222, -14.1218,
-1.6274

■ 40.5121, 54.4649,
25.0282

■ 96.3001, -18.4566,
0.7685

■ 39.0124, 58.7558,
25.0679

Harmonies

Analogous

The Analogous color harmony consists of three colors that are next to each other on the color wheel.



63.3942, 18.3215, 5.4523



63.3927, 14.0742, 13.8745



63.3942, 5.1747, 18.8070

Triad

The Triadic color harmony groups three colors that are evenly spaced from another and form a triangle on the color wheel.



63.3942, 14.0716, 13.8755



63.3942, -21.0492, 10.8853



63.3942, -1.2324, -19.1735

Complementary

The Complementary color scheme is a pair of colors which are on the opposite of each other on the color wheel.



63.3927, 14.0742, 13.8745



72.5507, -17.1739, -6.4980

Split Complementary

Split-complementary colors differ from the complementary color scheme. The scheme consists of three colors, the original color and two neighbors of the complement color.



63.3942, -11.5151, -17.0765



63.3927, 14.0742, 13.8745



63.3942, -22.5160, 1.3817

Square

The Square scheme is like the rectangle color scheme, but the four colors are evenly spaced on the color wheel.



63.3942, 14.0716, 13.8755



63.3942, -14.9902, 17.2906



63.3942, -19.1375, -9.1140



63.3942, 9.1181, -14.4463

Rectangle

The Rectangle color scheme consists of four colors that form a rectangle on the color wheel.



63.3927, 14.0742, 13.8745



63.3942, -1.9455, 19.9869



63.3942, -19.1375, -9.1140



63.3942, -4.8137, -19.2522

Sweetspot

The Sweet Spot groups the original color and five complimentary colors.



63.3942, 14.0716, 13.8755



93.2785, 0.8988, 8.9439



62.2674, 28.5553, -13.7475



42.6630, 0.8954, 4.3976

0.0000, NaN, NaN



46.2646, -2.4686, 2.5136

Same Dimension

The Same Dimension uses a secret algorithm to generate beautiful new colors.



63.3942, 14.0716, 13.8755



74.1763, 22.3798, 19.2767



72.7321, -2.7215, 22.6009



35.7100, 0.4345, 3.4816



30.8137, 45.6486, 19.7864



8.2346, 9.2051, 5.2353

Inverse Universe

The Inverse Universe completely reimagines the original color for something new.



72.5507, -17.1739, -6.4980



87.5507, -23.4985, -10.5321



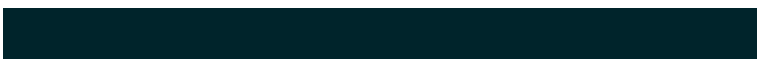
62.3460, -1.0514, -20.8356



37.0661, -4.1501, 0.4732



47.3170, -18.4335, -19.3494



12.0256, -5.0575, -4.1133

Previews

White Background



This preview shows how the HunterLab color 63.3927, 14.0742, 13.8745 looks on a white background.

Color Contrast Check

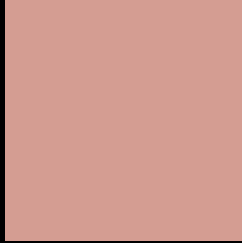
Large Text (above 18pt) WCAG AA × Fail

Any Text WCAG AA × Fail

Large Text (above 18pt) WCAG AAA × Fail

Any Text WCAG AAA × Fail

Black Background



This preview shows how the HunterLab color 63.3927, 14.0742, 13.8745 looks on a black background.

Color Contrast Check

Large Text (above 18pt) WCAG AA ✓ Pass

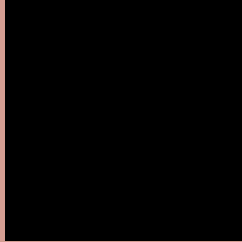
Any Text WCAG AA ✓ Pass

Large Text (above 18pt) WCAG AAA ✓ Pass

Any Text WCAG AAA ✓ Pass

If you want to check with other color combinations, try the [Color Contrast Checker](#).

HunterLab 63.3927, 14.0742, 13.8745 Background



This preview shows how black text looks on a background with the HunterLab color 63.3927, 14.0742, 13.8745.



This preview shows how white text looks on a background with the HunterLab color 63.3927, 14.0742,

Color Blindness Simulation

Color vision deficiency is a very complex topic, and I could not describe the different causes any better than Wikipedia does, so if you want to learn more, you should check out their [article about color blindness](#).

Dichromacy



Original Color

63.3927, 14.0742, 13.8745

Protanopia

63.6509, -3.4644, 11.0885

Deuteranopia

63.5067, 4.5282, 14.2024



Tritanopia

63.3723, 19.1451, 5.6325

Trichromacy



Original Color

63.3927, 14.0742, 13.8745

Protanomaly

63.2925, 2.5986, 12.0166

Deuteranomaly

63.3172, 8.1989, 14.0750

Tritanomaly

63.3183, 17.2360, 8.6040

Monochromacy



Original Color

63.3927, 14.0742, 13.8745

Achromatopsia

64.2295, -3.4271, 3.4897

Achromatomaly

63.9113, 2.4506, 7.2799

CSS Examples

Text

The CSS property to change the color of the text to HunterLab 63.3927, 14.0742, 13.8745 is called "color". The color property can be set on classes, ids or directly on the HTML element.

This example shows how text in the color `rgb(212, 157, 146)` looks like.

```
.text, #text, p{  
    color:rgb(212, 157, 146)  
}
```

If you want to add a text shadow in that color use the text-shadow property, you can generate a text shadow directly with our [CSS Text Shadow Generator](#).

Here you see how black text with a 4 pixel rgb(212, 157, 146) colored shadow looks like.

```
.shadow{ text-shadow: 4px 4px 2px rgb(212, 157, 146) }
```

Border

The CSS property to change the border of an element to HunterLab 63.3927, 14.0742, 13.8745 is called "border". The border property can be set on classes, ids or directly on the HTML element.

This example shows the color as border, it can be applied via the CSS property "border" or "border-color".

```
.border, #border, table{ border:4px solid rgb(212, 157, 146) }
```


If only the border color should be changed use the property border-color.

```
.border{ border-color:rgb(212, 157, 146) }
```

If you want to add a box shadow in that color use:

Here you see how a box with a 4 pixel rgb(212, 157, 146) colored shadow looks like.

```
.boxshadow{ -moz-box-shadow:4px 4px 4px  
4px rgb(212, 157, 146); -webkit-box-  
shadow:4px 4px 4px 4px rgb(212, 157, 146);  
box-shadow:4px 4px 4px 4px rgb(212, 157,  
146) }
```

Background

The CSS property to change the background color of an element to HunterLab 63.3927, 14.0742, 13.8745 is called "background". The background property can be set on classes, ids or directly on the HTML element.

```
.background, #background, body{  
background: rgb(212, 157, 146) }
```

If only the background color should be changed can be used:

```
.background{ background-color: rgb(212,  
157, 146) }
```

This example shows the color as background, it is applied via the CSS property "background".

To optimize and compress your CSS code, you can use our [online CSS compressor and optimizer](#) based on csstidy. If you want to create a linear or radial gradient as background or border, check our [CSS Gradient Generator](#).

Hey! You found this booklet interesting? Support Converting Colors with the new Membership Option!

The pro membership hides all ads, plus gives you double the colors in the color bucket, and more awesome pro features!

[Learn more, Memberships starting at \\$2.50/m!](#)

**Follow me
on Twitter!**

@ConvertingColor