

Converting Colors

HunterLab(63.5455, 8.0631,
21.1949)

Have a look what the booklet for
HunterLab(63.5455, 8.0631,
21.1949) contains.

HunterLab(63.5455, 8.0631, 21.1949)	3
<i>Conversions</i>	4
<i>Details</i>	6
<i>Harmonies</i>	12
<i>Previews</i>	24
<i>Color Blindness Simulation</i>	28
<i>CSS Examples</i>	31

Color

**HunterLab(63.5455, 8.0631,
21.1949)**

Conversions

Conversions Part 1

Format	Color
Hex	D0A17D
RGB	208, 161, 125
RGB Percent	82%, 63%, 49%
CMY	0.1843, 0.3686, 0.5098
CMYK	0.00, 0.23, 0.40, 0.18
HSL	26°, 47%, 65%
HSV	26°, 40%, 82%
XYZ	42.4590, 40.3803, 24.9584
YIQ	170.9490, 39.5680, -1.2320

Conversions

Conversions Part 2

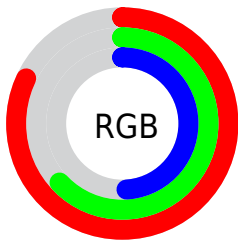
Format	Color
R _Y B	208, 189, 125
Decimal	13672829
CIE Lab	69.74, 12.65, 25.43
CIE LCh	70, 28.401, 63.549
Yxy	40.3822, 0.3939, 0.3746
Android (android.graphics.Color)	4291862909 (0xFFD0A17D)
YUV	170.9490, -22.6529, 32.4937
Hunter-Lab	63.5455, 8.0631, 21.1949

Details

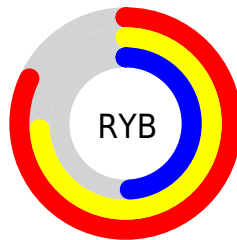
The HunterLab color $63.5455, 8.0631, 21.1949$ is a light color, and the websafe version is hex $CC9966$. A complement of this color would be $61.9820, -8.8406, -19.0445$, and the grayscale version is $63.8747, -3.4082, 3.4704$.

A 20% lighter version of the original color is $85.7823, 3.5136, 23.8085$, and $42.5846, 8.1450, 16.8633$ is the 20% darker color. If you saturate the color by 10%, you get $59.9839, 11.9919, 24.1734$, and if you desaturate by 10%, it is $67.2925, 4.4888, 17.6551$.

Distribution



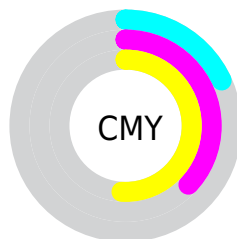
- Red (82%)
- Green (63%)
- Blue (49%)



- Red (82%)
- Yellow (74%)
- Blue (49%)



- Cyan (0%)
- Magenta (23%)
- Yellow (40%)
- Black (18%)



- Cyan (18%)
- Magenta (37%)
- Yellow (51%)

Brightness & Saturation Gradients

These gradients show how the HunterLab color 63.5455, 8.0631, 21.1949 changes by changing the brightness by 10 percent. The first figure shows a shift by +10% for each color and the second figure -10%.

Similar to the brightness gradients but the following saturation gradients show a change of the HunterLab color 63.5455, 8.0631, 21.1949 by changing the saturation by 10% instead.

63.5455, 8.0631,
21.1949

63.5455, 8.0631,
21.1949

186.4757, 6.1568,
37.9854

52.7605, 7.9961,
19.1456

87.0317, 7.9909,
25.1198

42.6645, 7.8549,
17.0114

99.6652, 7.8689,
27.0195

33.3100, 7.6259,
14.7640

112.8568, 7.6949,
28.8897

24.7611, 7.2939,
12.3602

126.5841, 7.4727,
30.7370

17.1026, 6.8376,
9.8854

140.8268, 7.2052,
32.5664

10.4532, 6.2258,
7.3172

155.5668, 6.8953,

0.0000, INF, NaN

34.3821

0.0000, NaN, NaN

170.7881, 6.5451,
36.1875

0.0000, NaN, NaN

■ 63.5455, 8.0631,
21.1949

■ 63.5455, 8.0631,
21.1949

■ 59.9839, 11.9919,
24.1734

■ 67.2925, 4.4888,
17.6551

■ 56.6220, 16.2901,
26.5208

■ 71.2034, 1.2599,
13.6155

■ 53.4816, 20.9461,
28.1729

■ 75.2642, -1.6486,
9.1354

■ 50.5836, 25.9268,
29.0775

■ 79.4615, -4.2616,
4.2662

■ 47.9482, 31.1648,
29.2137

■ 83.7833, -6.6043,
-0.9473

■ 45.5857, 36.5160,
28.7215

■ 88.2192, -8.7011,
-6.4666

■ 45.5640, 36.5671,
28.7165

■ 92.1944, -13.7173,
-4.2724

■ 95.9947, -19.5628,
0.3757

Harmonies

Analogous

The Analogous color harmony consists of three colors that are next to each other on the color wheel.



63.5470, 18.6757, 15.1879



63.5455, 8.0631, 21.1949



63.5470, -4.9255, 22.8221

Triad

The Triadic color harmony groups three colors that are evenly spaced from another and form a triangle on the color wheel.



63.5470, 8.0605, 21.1958



63.5470, -26.3478, 1.9778



63.5470, 10.9340, -19.5699

Complementary

The Complementary color scheme is a pair of colors which are on the opposite of each other on the color wheel.



63.5455, 8.0631, 21.1949



61.9820, -8.8406, -19.0445

Split Complementary

Split-complementary colors differ from the complementary color scheme. The scheme consists of three colors, the original color and two neighbors of the complement color.



63.5470, -1.8480, -24.9543



63.5455, 8.0631, 21.1949



63.5470, -22.8106, -11.0446

Square

The Square scheme is like the rectangle color scheme, but the four colors are evenly spaced on the color wheel.



63.5470, 8.0605, 21.1958



63.5470, -24.1517, 13.1153



63.5470, -14.0908, -21.5602



63.5470, 20.4257, -7.9998

Rectangle

The Rectangle color scheme consists of four colors that form a rectangle on the color wheel.



63.5455, 8.0631, 21.1949



63.5470, -13.0230, 21.5409



63.5470, -14.0908, -21.5602



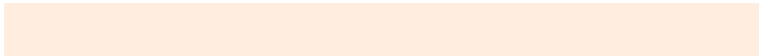
63.5470, 6.8446, -22.2576

Sweetspot

The Sweet Spot groups the original color and five complimentary colors.



63.5470, 8.0605, 21.1958



93.6071, -1.2896, 12.8099



55.7291, 33.1430, -6.6215



42.9920, -0.3777, 6.2781

0.0000, NaN, NaN



46.2646, -2.4686, 2.5136

Same Dimension

The Same Dimension uses a secret algorithm to generate beautiful new colors.



63.5470, 8.0605, 21.1958



76.1132, 14.4103, 29.9799



75.7305, -12.4502, 31.2564



35.5524, -0.8403, 4.1950



36.2268, 28.2281, 22.8170



9.4352, 4.6385, 5.8951

Inverse Universe

The Inverse Universe completely reimagines the original color for something new.



61.9820, -8.8406, -19.0445



73.7361, -11.0053, -30.8294



50.0220, 12.0091, -39.6973



35.3731, -2.8060, -0.4505



33.2801, 1.9096, -45.7196



8.8064, -1.1179, -8.5940

Previews

White Background



This preview shows how the HunterLab color 63.5455, 8.0631, 21.1949 looks on a white background.

Color Contrast Check

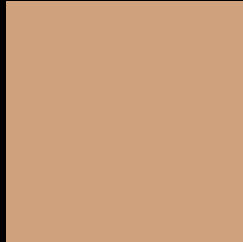
Large Text (above 18pt) WCAG AA × Fail

Any Text WCAG AA × Fail

Large Text (above 18pt) WCAG AAA × Fail

Any Text WCAG AAA × Fail

Black Background



This preview shows how the HunterLab color 63.5455, 8.0631, 21.1949 looks on a black background.

Color Contrast Check

Large Text (above 18pt) WCAG AA ✓ Pass

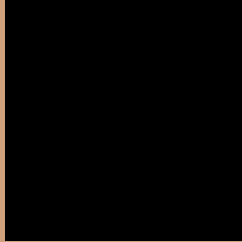
Any Text WCAG AA ✓ Pass

Large Text (above 18pt) WCAG AAA ✓ Pass

Any Text WCAG AAA ✓ Pass

If you want to check with other color combinations, try the [Color Contrast Checker](#).

HunterLab 63.5455, 8.0631, 21.1949 Background



This preview shows how black text looks on a background with the HunterLab color 63.5455, 8.0631, 21.1949.



This preview shows how white text looks on a background with the HunterLab color 63.5455, 8.0631,

Color Blindness Simulation

Color vision deficiency is a very complex topic, and I could not describe the different causes any better than Wikipedia does, so if you want to learn more, you should check out their [article about color blindness](#).

Dichromacy



Original Color

63.5455, 8.0631, 21.1949

Protanopia

63.5623, -4.8974, 19.7082

Deuteranopia

63.7088, 4.3203, 21.2764



Tritanopia

63.4269, 18.0305, 5.2243

Trichromacy



Original Color

63.5455, 8.0631, 21.1949

Protanomaly

63.5629, -0.4408, 20.1102

Deuteranomaly

63.6494, 5.5602, 21.2446

Tritanomaly

63.4270, 14.4862, 11.5688

Monochromacy



Original Color

63.5455, 8.0631, 21.1949

Achromatopsia

63.8154, -3.4050, 3.4672

Achromatomaly

63.3726, 0.1273, 10.4498

CSS Examples

Text

The CSS property to change the color of the text to HunterLab 63.5455, 8.0631, 21.1949 is called "color". The color property can be set on classes, ids or directly on the HTML element.

This example shows how text in the color `rgb(208, 161, 125)` looks like.

```
.text, #text, p{  
    color:rgb(208, 161, 125)  
}
```

If you want to add a text shadow in that color use the text-shadow property, you can generate a text shadow directly with our [CSS Text Shadow Generator](#).

Here you see how black text with a 4 pixel rgb(208, 161, 125) colored shadow looks like.

```
.shadow{ text-shadow: 4px 4px 2px rgb(208, 161, 125) }
```

Border

The CSS property to change the border of an element to HunterLab 63.5455, 8.0631, 21.1949 is called "border". The border property can be set on classes, ids or directly on the HTML element.

This example shows the color as border, it can be applied via the CSS property "border" or "border-color".

```
.border, #border, table{ border:4px solid rgb(208, 161, 125) }
```


If only the border color should be changed use the property `border-color`.

```
.border{ border-color:rgb(208, 161, 125) }
```

If you want to add a box shadow in that color use:

Here you see how a box with a 4 pixel `rgb(208, 161, 125)` colored shadow looks like.

```
.boxshadow{ -moz-box-shadow:4px 4px 4px  
4px rgb(208, 161, 125); -webkit-box-  
shadow:4px 4px 4px 4px rgb(208, 161, 125);  
box-shadow:4px 4px 4px 4px rgb(208, 161,  
125) }
```

Background

The CSS property to change the background color of an element to HunterLab 63.5455, 8.0631, 21.1949 is called "background". The background property can be set on classes, ids or directly on the HTML element.

```
.background, #background, body{  
background: rgb(208, 161, 125) }
```

If only the background color should be changed can be used:

```
.background{ background-color: rgb(208,  
161, 125) }
```

This example shows the color as background, it is applied via the CSS property "background".

To optimize and compress your CSS code, you can use our [online CSS compressor and optimizer](#) based on csstidy. If you want to create a linear or radial gradient as background or border, check our [CSS Gradient Generator](#).

Hey! You found this booklet interesting? Support Converting Colors with the new Membership Option!

The pro membership hides all ads, plus gives you double the colors in the color bucket, and more awesome pro features!

[Learn more, Memberships starting at \\$2.50/m!](#)

**Follow me
on Twitter!**

@ConvertingColor