

Converting Colors

HunterLab(63.6144, 2.9348,
12.6099)

Have a look what the booklet for
HunterLab(63.6144, 2.9348,
12.6099) contains.

HunterLab(63.4718, 3.1538, 12.6058)	3
<i>Conversions</i>	4
<i>Details</i>	6
<i>Harmonies</i>	12
<i>Previews</i>	24
<i>Color Blindness Simulation</i>	28
<i>CSS Examples</i>	31

Color

**HunterLab(63.4718, 3.1538,
12.6058)**

Conversions

Conversions Part 1

Format	Color
Hex	C0A595
RGB	192, 165, 149
RGB Percent	75%, 65%, 58%
CMY	0.2471, 0.3529, 0.4157
CMYK	0.00, 0.14, 0.22, 0.25
HSL	22°, 25%, 67%
HSV	22°, 22%, 75%
XYZ	40.6182, 40.2867, 34.0691
YIQ	171.2490, 21.2280, 0.7480

Conversions

Conversions Part 2

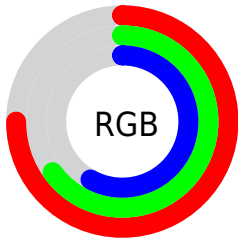
Format	Color
R_{YB}	192, 174, 149
Decimal	12625301
CIE _{Lab}	69.67, 7.33, 11.94
CIE _{LCh}	70, 14.007, 58.439
Yxy	40.2885, 0.3533, 0.3504
Android (android.graphics.Color)	4290815381 (0xFFC0A595)
YUV	171.2490, -10.9688, 18.1986
Hunter-Lab	63.4718, 3.1538, 12.6058

Details

The HunterLab color $63.4718, 3.1538, 12.6058$ is a light color, and the websafe version is hex $CC9999$. A complement of this color would be $64.2222, -8.3447, -6.6122$, and the grayscale version is $63.9574, -3.4126, 3.4749$.

A 20% lighter version of the original color is $86.9701, 2.6369, 15.1191$, and $42.5387, 3.5685, 10.1690$ is the 20% darker color. If you saturate the color by 10%, you get $59.6483, 6.7507, 15.9504$, and if you desaturate by 10%, it is $67.4602, -0.1525, 8.9204$.

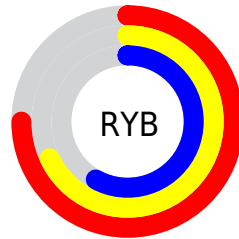
Distribution



Red (75%)

Green (65%)

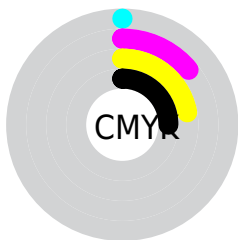
Blue (58%)



Red (75%)

Yellow (68%)

Blue (58%)

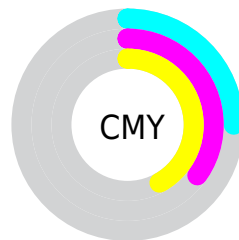


Cyan (0%)

Magenta (14%)

Yellow (22%)

Black (25%)



Cyan (25%)

Magenta (35%)

Yellow (42%)

Brightness & Saturation Gradients

These gradients show how the HunterLab color 63.4718, 3.1538, 12.6058 changes by changing the brightness by 10 percent. The first figure shows a shift by +10% for each color and the second figure -10%.

Similar to the brightness gradients but the following saturation gradients show a change of the HunterLab color 63.4718, 3.1538, 12.6058 by changing the saturation by 10% instead.

■ 63.4718, 3.1538,
12.6058

■ 63.4718, 3.1538,
12.6058

186.3701, -0.6809,
23.8146

■ 52.6912, 3.3500,
11.3752

■ 86.9498, 2.5943,
15.0573

■ 42.5999, 3.4868,
10.1308

■ 99.5794, 2.2440,
16.2849

■ 33.2505, 3.5539,
8.8626

112.7675, 1.8505,
17.5177

■ 24.7072, 3.5399,
7.5536

126.4913, 1.4167,
18.7578

■ 17.0550, 3.4282,
6.1745

140.7306, 0.9447,
20.0065

■ 10.4128, 3.1926,
5.4001

155.4674, 0.4367,

0.0000, INF, NaN

21.2650

0.0000, NaN, NaN

170.6855, -0.1057,
22.5341

0.0000, NaN, NaN

■ 63.4718, 3.1538,
12.6058

■ 63.4718, 3.1538,
12.6058

■ 59.6483, 6.7507,
15.9504

■ 67.4602, -0.1525,
8.9204

■ 56.0042, 10.6632,
18.8966

■ 71.5929, -3.1851,
4.9380

■ 52.5622, 14.8996,
21.3824

■ 75.8573, -5.9704,
0.6989

■ 49.3461, 19.4552,
23.3397

■ 80.2412, -8.5323,
-3.7644

■ 46.3818, 24.3019,
24.7000

■ 84.7341, -10.8934,
-8.4248

■ 43.6962, 29.3770,
25.4066

■ 88.9865, -14.9746,
-8.4645

■ 41.3150, 34.5716,
25.4360

■ 92.9598, -21.0033,
-3.4273

■ 39.7135, 38.4678,
25.1447

■ 94.8401, -23.7796,
-1.1210

Harmonies

Analogous

The Analogous color harmony consists of three colors that are next to each other on the color wheel.



63.4732, 7.7484, 8.7595



63.4718, 3.1538, 12.6058



63.4732, -3.0561, 14.0379

Triad

The Triadic color harmony groups three colors that are evenly spaced from another and form a triangle on the color wheel.



63.4732, 3.1517, 12.6067



63.4732, -15.1810, 3.7717



63.4732, 2.5516, -7.6735

Complementary

The Complementary color scheme is a pair of colors which are on the opposite of each other on the color wheel.



63.4718, 3.1538, 12.6058



64.2222, -8.3447, -6.6122

Split Complementary

Split-complementary colors differ from the complementary color scheme. The scheme consists of three colors, the original color and two neighbors of the complement color.



63.4732, -3.7235, -9.3370



63.4718, 3.1538, 12.6058



63.4732, -13.8100, -2.3508

Square

The Square scheme is like the rectangle color scheme, but the four colors are evenly spaced on the color wheel.



63.4732, 3.1517, 12.6067



63.4732, -13.4978, 9.2584



63.4732, -9.6774, -7.3018



63.4732, 7.3924, -2.9540

Rectangle

The Rectangle color scheme consists of four colors that form a rectangle on the color wheel.



63.4718, 3.1538, 12.6058



63.4732, -7.2198, 13.5484



63.4732, -9.6774, -7.3018



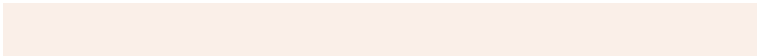
63.4732, 0.5325, -8.6280

Sweetspot

The Sweet Spot groups the original color and five complimentary colors.



63.4732, 3.1517, 12.6067



93.7228, -2.4055, 9.2215



59.8713, 15.5117, -3.6319



43.2542, -0.9996, 4.4217



98.8636, -5.2751, 5.3714



45.2661, -2.4153, 2.4594

Same Dimension

The Same Dimension uses a secret algorithm to generate beautiful new colors.



63.4732, 3.1517, 12.6067



82.8179, 6.6314, 19.2990



69.7187, -7.3619, 18.6504



32.6776, -0.5216, 3.6849



32.7882, 30.9907, 20.7465



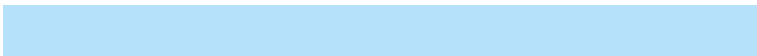
7.7267, 4.2114, 4.8349

Inverse Universe

The Inverse Universe completely reimagines the original color for something new.



64.2222, -8.3447, -6.6122



84.0409, -12.1999, -12.1763



57.9223, 2.1396, -15.3181



32.8297, -2.8451, -0.2005



34.4105, -2.9386, -36.6666



8.0006, -1.9233, -5.8483

Previews

White Background



This preview shows how the HunterLab color 63.4718, 3.1538, 12.6058 looks on a white background.

Color Contrast Check

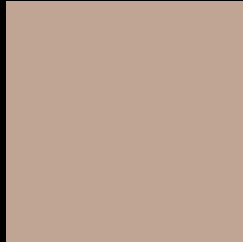
Large Text (above 18pt) WCAG AA × Fail

Any Text WCAG AA × Fail

Large Text (above 18pt) WCAG AAA × Fail

Any Text WCAG AAA × Fail

Black Background



This preview shows how the HunterLab color 63.4718, 3.1538, 12.6058 looks on a black background.

Color Contrast Check

Large Text (above 18pt) WCAG AA ✓ Pass

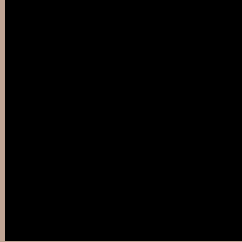
Any Text WCAG AA ✓ Pass

Large Text (above 18pt) WCAG AAA ✓ Pass

Any Text WCAG AAA ✓ Pass

If you want to check with other color combinations, try the [Color Contrast Checker](#).

HunterLab 63.4718, 3.1538, 12.6058 Background



This preview shows how black text looks on a background with the HunterLab color 63.4718, 3.1538, 12.6058.



This preview shows how white text looks on a background with the HunterLab color 63.4718, 3.1538,

Color Blindness Simulation

Color vision deficiency is a very complex topic, and I could not describe the different causes any better than Wikipedia does, so if you want to learn more, you should check out their [article about color blindness](#).

Dichromacy



Original Color

63.4718, 3.1538, 12.6058

Protanopia

63.5994, -3.7467, 11.8297

Deuteranopia

63.3957, 4.3538, 12.5481



Tritanopia

63.3623, 9.9442, 1.7469

Trichromacy



Original Color

63.4718, 3.1538, 12.6058

Protanomaly

63.4622, -1.2622, 12.1258

Deuteranomaly

63.2916, 4.0041, 12.4341

Tritanomaly

63.2666, 7.6692, 5.7590

Monochromacy



Original Color

63.4718, 3.1538, 12.6058

Achromatopsia

63.8154, -3.4050, 3.4672

Achromatomaly

63.7213, -1.1726, 7.0035

CSS Examples

Text

The CSS property to change the color of the text to HunterLab 63.4718, 3.1538, 12.6058 is called "color". The color property can be set on classes, ids or directly on the HTML element.

This example shows how text in the color `rgb(192, 165, 149)` looks like.

```
.text, #text, p{  
    color:rgb(192, 165, 149)  
}
```

If you want to add a text shadow in that color use the text-shadow property, you can generate a text shadow directly with our [CSS Text Shadow Generator](#).

Here you see how black text with a 4 pixel rgb(192, 165, 149) colored shadow looks like.

```
.shadow{ text-shadow: 4px 4px 2px rgb(192, 165, 149) }
```

Border

The CSS property to change the border of an element to HunterLab 63.4718, 3.1538, 12.6058 is called "border". The border property can be set on classes, ids or directly on the HTML element.

This example shows the color as border, it can be applied via the CSS property "border" or "border-color".

```
.border, #border, table{ border:4px solid rgb(192, 165, 149) }
```


If only the border color should be changed use the property `border-color`.

```
.border{ border-color:rgb(192, 165, 149) }
```

If you want to add a box shadow in that color use:

Here you see how a box with a 4 pixel `rgb(192, 165, 149)` colored shadow looks like.

```
.boxshadow{ -moz-box-shadow:4px 4px 4px  
4px rgb(192, 165, 149); -webkit-box-  
shadow:4px 4px 4px 4px rgb(192, 165, 149);  
box-shadow:4px 4px 4px 4px rgb(192, 165,  
149) }
```

Background

The CSS property to change the background color of an element to HunterLab 63.4718, 3.1538, 12.6058 is called "background". The background property can be set on classes, ids or directly on the HTML element.

```
.background, #background, body{  
background: rgb(192, 165, 149) }
```

If only the background color should be changed can be used:

```
.background{ background-color: rgb(192,  
165, 149) }
```

This example shows the color as background, it is applied via the CSS property "background".

To optimize and compress your CSS code, you can use our [online CSS compressor and optimizer](#) based on csstidy. If you want to create a linear or radial gradient as background or border, check our [CSS Gradient Generator](#).

Hey! You found this booklet interesting? Support Converting Colors with the new Membership Option!

The pro membership hides all ads, plus gives you double the colors in the color bucket, and more awesome pro features!

[Learn more, Memberships starting at \\$2.50/m!](#)

**Follow me
on Twitter!**

@ConvertingColor