

Converting Colors

HunterLab(63.6478, 9.6822,
9.2135)

Have a look what the booklet for
HunterLab(63.6478, 9.6822, 9.2135)
contains.

HunterLab(63.5420, 9.6063, 9.1393)	3
<i>Conversions</i>	4
<i>Details</i>	6
<i>Harmonies</i>	12
<i>Previews</i>	24
<i>Color Blindness Simulation</i>	28
<i>CSS Examples</i>	31

Color

**HunterLab(63.5420, 9.6063,
9.1393)**

Conversions

Conversions Part 1

Format	Color
Hex	C9A19E
RGB	201, 161, 158
RGB Percent	79%, 63%, 62%
CMY	0.2118, 0.3686, 0.3804
CMYK	0.00, 0.20, 0.21, 0.21
HSL	4°, 28%, 70%
HSV	4°, 21%, 79%
XYZ	43.0038, 40.3759, 37.8745
YIQ	172.6180, 24.8030, 7.5470

Conversions

Conversions Part 2

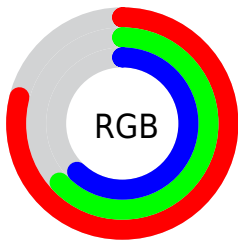
Format	Color
R _Y B	201, 161, 158
Decimal	13214110
CIE Lab	69.74, 14.29, 7.17
CIE LCh	70, 15.988, 26.630
Yxy	40.3777, 0.3547, 0.3330
Android (android.graphics.Color)	4291404190 (0xFFC9A19E)
YUV	172.6180, -7.2067, 24.8910
Hunter-Lab	63.5420, 9.6063, 9.1393

Details

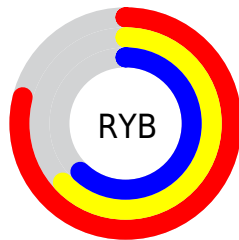
The HunterLab color $63.5420, 9.6063, 9.1393$ is a light color, and the websafe version is hex $CC9999$. A complement of this color would be $72.0229, -14.9175, -1.3705$, and the grayscale version is $64.5085, -3.4420, 3.5049$.

A 20% lighter version of the original color is $86.7040, 8.4497, 10.5275$, and $42.5556, 9.3195, 7.0059$ is the 20% darker color. If you saturate the color by 10%, you get $58.0412, 16.4830, 11.5295$, and if you desaturate by 10%, it is $69.3959, 3.0375, 6.7833$.

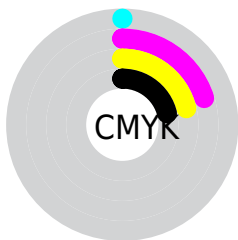
Distribution



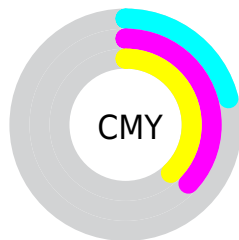
- Red (79%)
- Green (63%)
- Blue (62%)



- Red (79%)
- Yellow (63%)
- Blue (62%)



- Cyan (0%)
- Magenta (20%)
- Yellow (21%)
- Black (21%)



- Cyan (21%)
- Magenta (37%)
- Yellow (38%)

Brightness & Saturation Gradients

These gradients show how the HunterLab color 63.5420, 9.6063, 9.1393 changes by changing the brightness by 10 percent. The first figure shows a shift by +10% for each color and the second figure -10%.

Similar to the brightness gradients but the following saturation gradients show a change of the HunterLab color 63.5420, 9.6063, 9.1393 by changing the saturation by 10% instead.

63.5420, 9.6063,
9.1393

63.5420, 9.6063,
9.1393

186.4706, 8.2879,
18.4912

52.7571, 9.4604,
8.1770

87.0278, 9.6824,
11.1056

42.6614, 9.2356,
7.2229

99.6610, 9.6298,
12.1105

33.3071, 8.9179,
6.2735

112.8525, 9.5227,
13.1316

24.7585, 8.4916,
5.3212

126.5796, 9.3650,
14.1693

17.1003, 7.9345,
4.3520

140.8221, 9.1600,
15.2239

10.4512, 7.2157,
3.4993

155.5621, 8.9105,

0.0000, INF, NaN

16.2958

0.0000, NaN, NaN

170.7831, 8.6191,
17.3848

0.0000, NaN, NaN

■ 63.5420, 9.6063,
9.1393

■ 63.5420, 9.6063,
9.1393

■ 58.0412, 16.4830,
11.5295

■ 69.3959, 3.0375,
6.7833

■ 52.9522, 23.6486,
13.9213

■ 75.5473, -3.2278,
4.4706

■ 48.3529, 31.0078,
16.2593

■ 81.9566, -9.2198,
2.2052

■ 44.3316, 38.3576,
18.4487

■ 88.5909, -14.9722,
-0.0153

■ 40.9818, 45.3477,
20.3512

■ 95.3043, -21.1922,
-0.5016

■ 38.3876, 51.4835,
21.8010

■ 95.4765, -21.4489,
-0.2939

■ 36.5982, 56.2207,
22.6566

■ 35.6830, 58.8381,
23.0177

Harmonies

Analogous

The Analogous color harmony consists of three colors that are next to each other on the color wheel.



63.5435, 11.1861, 2.6713



63.5420, 9.6063, 9.1393



63.5435, 4.4871, 13.6010

Triad

The Triadic color harmony groups three colors that are evenly spaced from another and form a triangle on the color wheel.



63.5435, 9.6041, 9.1403



63.5435, -14.6622, 10.3533



63.5435, -4.2144, -11.3149

Complementary

The Complementary color scheme is a pair of colors which are on the opposite of each other on the color wheel.



63.5420, 9.6063, 9.1393



72.0229, -14.9175, -1.3705

Split Complementary

Split-complementary colors differ from the complementary color scheme. The scheme consists of three colors, the original color and two neighbors of the complement color.



63.5435, -10.9087, -8.6915



63.5420, 9.6063, 9.1393



63.5435, -16.7675, 4.2364

Square

The Square scheme is like the rectangle color scheme, but the four colors are evenly spaced on the color wheel.



63.5435, 9.6041, 9.1403



63.5435, -9.5448, 14.2441



63.5435, -15.4245, -2.8011



63.5435, 3.0001, -9.6272

Rectangle

The Rectangle color scheme consists of four colors that form a rectangle on the color wheel.



63.5420, 9.6063, 9.1393



63.5435, -0.1258, 15.0937



63.5435, -15.4245, -2.8011



63.5435, -6.5973, -10.9013

Sweetspot

The Sweet Spot groups the original color and five complimentary colors.



63.5435, 9.6041, 9.1403



95.0301, -0.4245, 7.2616



63.9962, 17.7702, -9.8270



43.7186, 0.0548, 3.4523

0.0000, NaN, NaN



46.2646, -2.4686, 2.5136

Same Dimension

The Same Dimension uses a secret algorithm to generate beautiful new colors.



63.5435, 9.6041, 9.1403



79.5033, 16.9909, 13.5105



69.6368, -1.2292, 15.3464



32.7932, 0.8128, 2.9318



28.3836, 46.3565, 18.3014



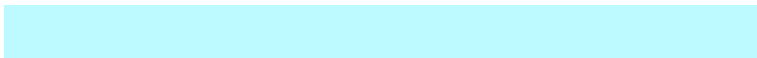
6.5102, 9.0118, 4.1693

Inverse Universe

The Inverse Universe completely reimagines the original color for something new.



72.0229, -14.9175, -1.3705



93.0596, -22.3284, -3.3243



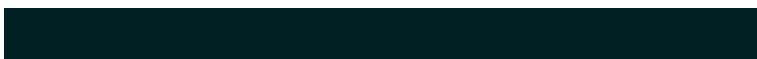
65.4112, -4.5132, -9.8604



34.5482, -4.2413, 0.7620



50.0429, -23.9962, -10.7484



11.0668, -5.4397, -2.0897

Previews

White Background



This preview shows how the HunterLab color 63.5420, 9.6063, 9.1393 looks on a white background.

Color Contrast Check

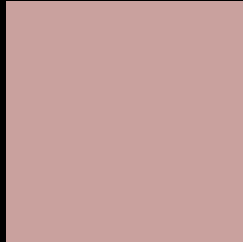
Large Text (above 18pt) WCAG AA × Fail

Any Text WCAG AA × Fail

Large Text (above 18pt) WCAG AAA × Fail

Any Text WCAG AAA × Fail

Black Background



This preview shows how the HunterLab color 63.5420, 9.6063, 9.1393 looks on a black background.

Color Contrast Check

Large Text (above 18pt) WCAG AA ✓ Pass

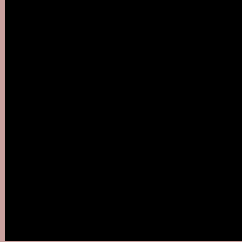
Any Text WCAG AA ✓ Pass

Large Text (above 18pt) WCAG AAA ✓ Pass

Any Text WCAG AAA ✓ Pass

If you want to check with other color combinations, try the [Color Contrast Checker](#).

HunterLab 63.5420, 9.6063, 9.1393 Background



This preview shows how black text looks on a background with the HunterLab color 63.5420, 9.6063, 9.1393.



This preview shows how white text looks on a background with the HunterLab color 63.5420, 9.6063,

Color Blindness Simulation

Color vision deficiency is a very complex topic, and I could not describe the different causes any better than Wikipedia does, so if you want to learn more, you should check out their [article about color blindness](#).

Dichromacy



Original Color

63.5420, 9.6063, 9.1393

Protanopia

63.6457, -2.9412, 6.8877

Deuteranopia

63.6797, 4.2697, 9.6145



Tritanopia

63.5870, 13.2981, 3.4903

Trichromacy



Original Color

63.5420, 9.6063, 9.1393

Protanomaly

63.5618, 1.1517, 7.7345

Deuteranomaly

63.7082, 5.8150, 9.6724

Tritanomaly

63.6014, 11.6547, 5.7640

Monochromacy



Original Color

63.5420, 9.6063, 9.1393

Achromatopsia

64.6440, -3.4492, 3.5122

Achromatomaly

64.2420, 0.8979, 5.4112

CSS Examples

Text

The CSS property to change the color of the text to HunterLab 63.5420, 9.6063, 9.1393 is called "color". The color property can be set on classes, ids or directly on the HTML element.

This example shows how text in the color `rgb(201, 161, 158)` looks like.

```
.text, #text, p{  
    color:rgb(201, 161, 158)  
}
```

If you want to add a text shadow in that color use the text-shadow property, you can generate a text shadow directly with our [CSS Text Shadow Generator](#).

Here you see how black text with a 4 pixel rgb(201, 161, 158) colored shadow looks like.

```
.shadow{ text-shadow: 4px 4px 2px rgb(201, 161, 158) }
```

Border

The CSS property to change the border of an element to HunterLab 63.5420, 9.6063, 9.1393 is called "border". The border property can be set on classes, ids or directly on the HTML element.

This example shows the color as border, it can be applied via the CSS property "border" or "border-color".

```
.border, #border, table{ border:4px solid rgb(201, 161, 158) }
```


If only the border color should be changed use the property `border-color`.

```
.border{ border-color:rgb(201, 161, 158) }
```

If you want to add a box shadow in that color use:

Here you see how a box with a 4 pixel `rgb(201, 161, 158)` colored shadow looks like.

```
.boxshadow{ -moz-box-shadow:4px 4px 4px  
4px rgb(201, 161, 158); -webkit-box-  
shadow:4px 4px 4px 4px rgb(201, 161, 158);  
box-shadow:4px 4px 4px 4px rgb(201, 161,  
158) }
```

Background

The CSS property to change the background color of an element to HunterLab 63.5420, 9.6063, 9.1393 is called "background". The background property can be set on classes, ids or directly on the HTML element.

```
.background, #background, body{  
background: rgb(201, 161, 158) }
```

If only the background color should be changed can be used:

```
.background{ background-color: rgb(201,  
161, 158) }
```

This example shows the color as background, it is applied via the CSS property "background".

To optimize and compress your CSS code, you can use our [online CSS compressor and optimizer](#) based on csstidy. If you want to create a linear or radial gradient as background or border, check our [CSS Gradient Generator](#).

Hey! You found this booklet interesting? Support Converting Colors with the new Membership Option!

The pro membership hides all ads, plus gives you double the colors in the color bucket, and more awesome pro features!

[Learn more, Memberships starting at \\$2.50/m!](#)

**Follow me
on Twitter!**

@ConvertingColor