

Converting Colors

HunterLab(63.6613, 5.3842,
6.4019)

Have a look what the booklet for
HunterLab(63.6613, 5.3842, 6.4019)
contains.

HunterLab(63.4883, 5.4681, 6.4175)	3
<i>Conversions</i>	4
<i>Details</i>	6
<i>Harmonies</i>	12
<i>Previews</i>	24
<i>Color Blindness Simulation</i>	28
<i>CSS Examples</i>	31

Color

**HunterLab(63.4883, 5.4681,
6.4175)**

Conversions

Conversions Part 1

Format	Color
Hex	BFA4A4
RGB	191, 164, 164
RGB Percent	75%, 64%, 64%
CMY	0.2510, 0.3568, 0.3569
CMYK	0.00, 0.14, 0.14, 0.25
HSL	0°, 17%, 70%
HSV	0°, 14%, 75%
XYZ	41.4622, 40.3076, 40.7168
YIQ	172.0730, 16.0920, 5.7240

Conversions

Conversions Part 2

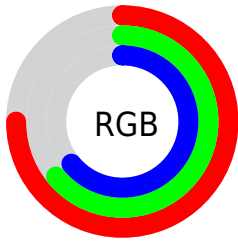
Format	Color
R_{YB}	191, 164, 164
Decimal	12559524
CIE Lab	69.69, 9.86, 3.65
CIE LCh	70, 10.512, 20.312
Yxy	40.3094, 0.3385, 0.3291
Android (android.graphics.Color)	4290749604 (0xFFBFA4A4)
YUV	172.0730, -3.9800, 16.5990
Hunter-Lab	63.4883, 5.4681, 6.4175

Details

The HunterLab color $63.4883, 5.4681, 6.4175$ is a light color, and the websafe version is hex $CC9999$. A complement of this color would be $69.9390, -11.7688, 1.1045$, and the grayscale version is $64.2722, -3.4294, 3.4920$.

A 20% lighter version of the original color is $87.0253, 5.2921, 8.0582$, and $42.5165, 5.5133, 4.9181$ is the 20% darker color. If you saturate the color by 10%, you get $57.7410, 12.4089, 8.3313$, and if you desaturate by 10%, it is $69.5764, -1.1831, 4.6284$.

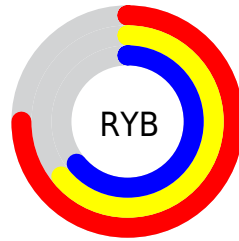
Distribution



Red (75%)

Green (64%)

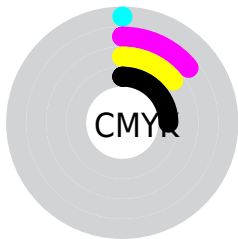
Blue (64%)



Red (75%)

Yellow (64%)

Blue (64%)

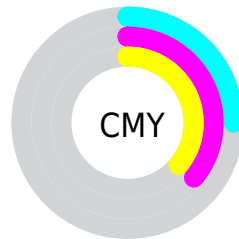


Cyan (0%)

Magenta (14%)

Yellow (14%)

Black (25%)



Cyan (25%)

Magenta (36%)

Yellow (36%)

Brightness & Saturation Gradients

These gradients show how the HunterLab color 63.4883, 5.4681, 6.4175 changes by changing the brightness by 10 percent. The first figure shows a shift by +10% for each color and the second figure -10%.

Similar to the brightness gradients but the following saturation gradients show a change of the HunterLab color 63.4883, 5.4681, 6.4175 by changing the saturation by 10% instead.

■ 63.4883, 5.4681,
6.4175

■ 63.4883, 5.4681,
6.4175

186.3937, 2.5560,
14.4424

■ 52.7066, 5.5384,
5.6442

■ 86.9681, 5.1425,
8.0397

■ 42.6143, 5.5415,
4.8939

■ 99.5986, 4.9014,
8.8861

■ 33.2638, 5.4659,
4.1671

112.7875, 4.6130,
9.7559

■ 24.7193, 5.2982,
3.4620

126.5120, 4.2802,
10.6488

■ 17.0656, 5.0191,
2.7750

140.7521, 3.9060,
11.5643

■ 10.4218, 4.5988,
2.1021

155.4896, 3.4926,

0.0000, INF, NaN

12.5020

0.0000, NaN, NaN

170.7084, 3.0420,
13.4615

0.0000, NaN, NaN

■ 63.4883, 5.4681,
6.4175

■ 63.4883, 5.4681,
6.4175

■ 57.7410, 12.4089,
8.3313

■ 69.5764, -1.1831,
4.6284

■ 52.3935, 19.6345,
10.3676

■ 75.9507, -7.5584,
2.9508

■ 47.5260, 27.0707,
12.5089

■ 82.5730, -13.6917,
1.3721

■ 43.2328, 34.5370,
14.7015

■ 89.4117, -19.6177,
-0.1216

■ 39.6195, 41.6930,
16.8388

■ 94.7715, -24.0319,
-1.2105

■ 36.7879, 48.0203,
18.7543

■ 34.8090, 52.9086,
20.2488

■ 33.6833, 55.8910,
21.1659

■ 33.2821, 56.9925,
21.5061

Harmonies

Analogous

The Analogous color harmony consists of three colors that are next to each other on the color wheel.



63.4897, 5.9314, 1.9660



63.4883, 5.4681, 6.4175



63.4897, 2.5895, 9.8265

Triad

The Triadic color harmony groups three colors that are evenly spaced from another and form a triangle on the color wheel.



63.4897, 5.4662, 6.4185



63.4897, -10.3145, 8.7929



63.4897, -4.9313, -5.7871

Complementary

The Complementary color scheme is a pair of colors which are on the opposite of each other on the color wheel.



63.4883, 5.4681, 6.4175



69.9390, -11.7688, 1.1045

Split Complementary

Split-complementary colors differ from the complementary color scheme. The scheme consists of three colors, the original color and two neighbors of the complement color.



63.4897, -9.1581, -3.6519



63.4883, 5.4681, 6.4175



63.4897, -12.2048, 4.9106

Square

The Square scheme is like the rectangle color scheme, but the four colors are evenly spaced on the color wheel.



63.4897, 5.4662, 6.4185



63.4897, -6.5522, 11.1253



63.4897, -11.7879, 0.3433



63.4897, -0.1668, -5.3084

Rectangle

The Rectangle color scheme consists of four colors that form a rectangle on the color wheel.



63.4883, 5.4681, 6.4175



63.4897, -0.2629, 11.1537



63.4897, -11.7879, 0.3433



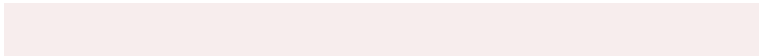
63.4897, -6.4598, -5.3456

Sweetspot

The Sweet Spot groups the original color and five complimentary colors.



63.4897, 5.4662, 6.4185



93.1732, -1.6464, 6.1773



64.3346, 9.9549, -5.6087



43.3637, -0.4601, 2.9777



98.8636, -5.2751, 5.3714



45.2661, -2.4153, 2.4594

Same Dimension

The Same Dimension uses a secret algorithm to generate beautiful new colors.



63.4897, 5.4662, 6.4185



82.5042, 10.1838, 9.3738



67.3791, -1.3271, 10.5895



30.8813, 1.0445, 2.5807



26.9809, 46.2013, 17.4343



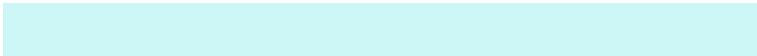
5.3406, 9.1417, 3.4509

Inverse Universe

The Inverse Universe completely reimagines the original color for something new.



69.9390, -11.7688, 1.1045



93.0007, -17.9014, 0.7133



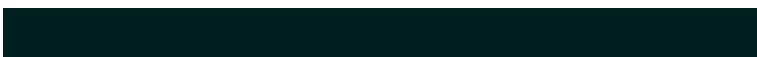
65.8003, -5.1880, -3.9588



32.8776, -4.2830, 0.9382



51.9161, -27.5189, -5.4852



10.2754, -5.4468, -1.0852

Previews

White Background



This preview shows how the HunterLab color 63.4883, 5.4681, 6.4175 looks on a white background.

Color Contrast Check

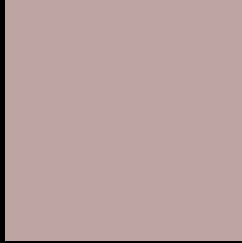
Large Text (above 18pt) WCAG AA × Fail

Any Text WCAG AA × Fail

Large Text (above 18pt) WCAG AAA × Fail

Any Text WCAG AAA × Fail

Black Background



This preview shows how the HunterLab color 63.4883, 5.4681, 6.4175 looks on a black background.

Color Contrast Check

Large Text (above 18pt) WCAG AA ✓ Pass

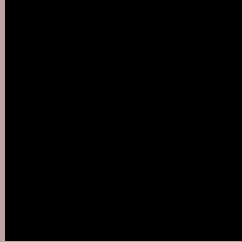
Any Text WCAG AA ✓ Pass

Large Text (above 18pt) WCAG AAA ✓ Pass

Any Text WCAG AAA ✓ Pass

If you want to check with other color combinations, try the [Color Contrast Checker](#).

HunterLab 63.4883, 5.4681, 6.4175 Background



This preview shows how black text looks on a background with the HunterLab color 63.4883, 5.4681, 6.4175.



This preview shows how white text looks on a background with the HunterLab color 63.4883, 5.4681,

Color Blindness Simulation

Color vision deficiency is a very complex topic, and I could not describe the different causes any better than Wikipedia does, so if you want to learn more, you should check out their [article about color blindness](#).

Dichromacy



Original Color

63.4883, 5.4681, 6.4175

Protanopia

63.6696, -2.6296, 5.1424

Deuteranopia

63.5684, 4.2826, 6.4874



Tritanopia

63.3579, 8.5682, 1.2374

Trichromacy



Original Color

63.4883, 5.4681, 6.4175

Protanomaly

63.6095, 0.1111, 5.5713

Deuteranomaly

63.6693, 4.6210, 6.6074

Tritanomaly

63.5147, 7.4081, 3.3017

Monochromacy



Original Color

63.4883, 5.4681, 6.4175

Achromatopsia

64.2295, -3.4271, 3.4897

Achromatomaly

63.8938, -0.2345, 4.5355

CSS Examples

Text

The CSS property to change the color of the text to HunterLab 63.4883, 5.4681, 6.4175 is called "color". The color property can be set on classes, ids or directly on the HTML element.

This example shows how text in the color `rgb(191, 164, 164)` looks like.

```
.text, #text, p{  
    color:rgb(191, 164, 164)  
}
```

If you want to add a text shadow in that color use the text-shadow property, you can generate a text shadow directly with our [CSS Text Shadow Generator](#).

Here you see how black text with a 4 pixel rgb(191, 164, 164) colored shadow looks like.

```
.shadow{ text-shadow: 4px 4px 2px rgb(191, 164, 164) }
```

Border

The CSS property to change the border of an element to HunterLab 63.4883, 5.4681, 6.4175 is called "border".

The border property can be set on classes, ids or directly on the HTML element.

This example shows the color as border, it can be applied via the CSS property "border" or "border-color".

```
.border, #border, table{ border:4px solid rgb(191, 164, 164) }
```


If only the border color should be changed use the property `border-color`.

```
.border{ border-color:rgb(191, 164, 164) }
```

If you want to add a box shadow in that color use:

Here you see how a box with a 4 pixel `rgb(191, 164, 164)` colored shadow looks like.

```
.boxshadow{ -moz-box-shadow:4px 4px 4px  
4px rgb(191, 164, 164); -webkit-box-  
shadow:4px 4px 4px 4px rgb(191, 164, 164);  
box-shadow:4px 4px 4px 4px rgb(191, 164,  
164) }
```

Background

The CSS property to change the background color of an element to HunterLab 63.4883, 5.4681, 6.4175 is called "background". The background property can be set on classes, ids or directly on the HTML element.

```
.background, #background, body{  
background: rgb(191, 164, 164) }
```

If only the background color should be changed can be used:

```
.background{ background-color: rgb(191,  
164, 164) }
```

This example shows the color as background, it is applied via the CSS property "background".

To optimize and compress your CSS code, you can use our [online CSS compressor and optimizer](#) based on csstidy. If you want to create a linear or radial gradient as background or border, check our [CSS Gradient Generator](#).

Hey! You found this booklet interesting? Support Converting Colors with the new Membership Option!

The pro membership hides all ads, plus gives you double the colors in the color bucket, and more awesome pro features!

[Learn more, Memberships starting at \\$2.50/m!](#)

**Follow me
on Twitter!**

@ConvertingColor