

Converting Colors

HunterLab(63.6995, 6.2860,
6.4222)

Have a look what the booklet for
HunterLab(63.6995, 6.2860, 6.4222)
contains.

HunterLab(63.7220, 6.3042, 6.2542)	3
<i>Conversions</i>	4
<i>Details</i>	6
<i>Harmonies</i>	12
<i>Previews</i>	24
<i>Color Blindness Simulation</i>	28
<i>CSS Examples</i>	31

Color

**HunterLab(63.7220, 6.3042,
6.2542)**

Conversions

Conversions Part 1

Format	Color
Hex	C1A4A5
RGB	193, 164, 165
RGB Percent	76%, 64%, 65%
CMY	0.2431, 0.3568, 0.3529
CMYK	0.00, 0.15, 0.15, 0.24
HSL	358°, 19%, 70%
HSV	358°, 15%, 76%
XYZ	42.0593, 40.6049, 41.2180
YIQ	172.7850, 16.9630, 6.4590

Conversions

Conversions Part 2

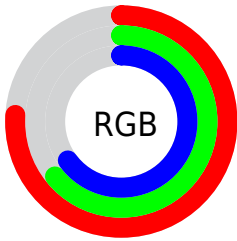
Format	Color
RYB	193, 164, 165
Decimal	12690597
CIELab	69.90, 10.76, 3.42
CIELCh	70, 11.295, 17.639
Yxy	40.6068, 0.3395, 0.3278
Android (android.graphics.Color)	4290880677 (0xFFC1A4A5)
YUV	172.7850, -3.8380, 17.7286
Hunter-Lab	63.7220, 6.3042, 6.2542

Details

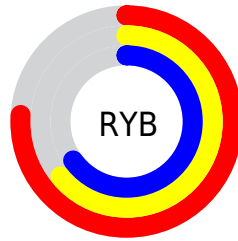
The HunterLab color $63.7220, 6.3042, 6.2542$ is a light color, and the websafe version is hex $CC9999$. A complement of this color would be $70.5969, -12.5566, 1.3975$, and the grayscale version is $64.5665, -3.4451, 3.5080$.

A 20% lighter version of the original color is $87.2665, 6.1630, 7.8779$, and $42.7429, 6.3098, 4.7776$ is the 20% darker color. If you saturate the color by 10%, you get $57.9524, 13.4391, 7.9713$, and if you desaturate by 10%, it is $69.8397, -0.5540, 4.6966$.

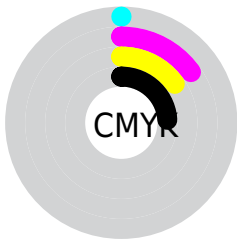
Distribution



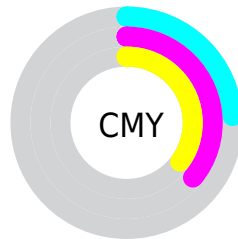
- Red (76%)
- Green (64%)
- Blue (65%)



- Red (76%)
- Yellow (64%)
- Blue (65%)



- Cyan (0%)
- Magenta (15%)
- Yellow (15%)
- Black (24%)



- Cyan (24%)
- Magenta (36%)
- Yellow (35%)

Brightness & Saturation Gradients

These gradients show how the HunterLab color 63.7220, 6.3042, 6.2542 changes by changing the brightness by 10 percent. The first figure shows a shift by +10% for each color and the second figure -10%.

Similar to the brightness gradients but the following saturation gradients show a change of the HunterLab color 63.7220, 6.3042, 6.2542 by changing the saturation by 10% instead.

63.7220, 6.3042,
6.2542

63.7220, 6.3042,
6.2542

186.7282, 3.7119,
14.1995

52.9263, 6.3311,
5.4923

87.2276, 6.0592,
7.8557

42.8190, 6.2886,
4.7543

99.8701, 5.8559,
8.6926

33.4522, 6.1644,
4.0409

113.0705, 5.6039,
9.5534

24.8900, 5.9448,
3.3508

126.8060, 5.3063,
10.4375

17.2165, 5.6099,
2.6808

141.0567, 4.9660,
11.3447

10.5500, 5.1292,
2.0235

155.8046, 4.5855,

0.0000, INF, NaN

12.2743

0.0000, NaN, NaN

171.0333, 4.1668,
13.2261

0.0000, NaN, NaN

■ 63.7220, 6.3042,
6.2542

■ 63.7220, 6.3042,
6.2542

■ 57.9524, 13.4391,
7.9713

■ 69.8397, -0.5540,
4.6966

■ 52.5916, 20.8375,
9.8542

■ 76.2497, -7.1443,
3.2782

■ 47.7213, 28.4119,
11.8959

■ 82.9128, -13.4974,
1.9816

■ 43.4376, 35.9627,
14.0541

■ 89.7964, -19.6463,
0.7887

■ 39.8467, 43.1269,
16.2324

■ 94.9092, -23.5259,
-1.0309

■ 37.0498, 49.3676,
18.2694

■ 35.1144, 54.0754,
19.9588

■ 34.0340, 56.8191,
21.1187

■ 33.6929, 57.7432,
21.4371

Harmonies

Analogous

The Analogous color harmony consists of three colors that are next to each other on the color wheel.



63.7234, 6.5521, 1.4207



63.7220, 6.3042, 6.2542



63.7234, 3.4011, 10.0388

Triad

The Triadic color harmony groups three colors that are evenly spaced from another and form a triangle on the color wheel.



63.7234, 6.3022, 6.2553



63.7234, -10.5509, 9.4902



63.7234, -5.5078, -6.4271

Complementary

The Complementary color scheme is a pair of colors which are on the opposite of each other on the color wheel.



63.7220, 6.3042, 6.2542



70.5969, -12.5566, 1.3975

Split Complementary

Split-complementary colors differ from the complementary color scheme. The scheme consists of three colors, the original color and two neighbors of the complement color.



63.7234, -9.9341, -3.8853



63.7220, 6.3042, 6.2542



63.7234, -12.7832, 5.4508

Square

The Square scheme is like the rectangle color scheme, but the four colors are evenly spaced on the color wheel.



63.7234, 6.3022, 6.2553



63.7234, -6.3740, 11.8021



63.7234, -12.5611, 0.5502



63.7234, -0.3776, -6.1686

Rectangle

The Rectangle color scheme consists of four colors that form a rectangle on the color wheel.



63.7220, 6.3042, 6.2542



63.7234, 0.4045, 11.5735



63.7234, -12.5611, 0.5502



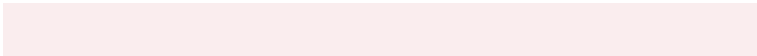
63.7234, -7.1242, -5.8640

Sweetspot

The Sweet Spot groups the original color and five complimentary colors.



63.7234, 6.3022, 6.2553



93.4195, -0.6925, 6.2962



64.4599, 10.4968, -6.5024



42.9951, -0.0253, 2.9817



98.8636, -5.2751, 5.3714



45.2661, -2.4153, 2.4594

Same Dimension

The Same Dimension uses a secret algorithm to generate beautiful new colors.



63.7234, 6.3022, 6.2553



82.7090, 11.5048, 9.0955



67.4412, -0.4368, 10.6705



31.7543, 1.1313, 2.5329



27.4825, 47.1086, 17.4173



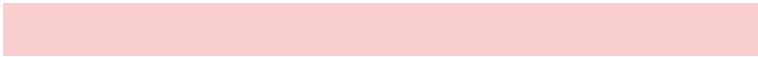
5.7298, 9.8561, 3.3647

Inverse Universe

The Inverse Universe completely reimagines the original color for something new.



63.7234, 6.3022, 6.2553



82.7090, 11.5048, 9.0955



66.6083, -6.0257, -3.9711



31.7543, 1.1313, 2.5329



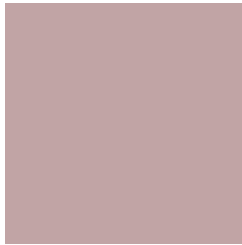
27.4825, 47.1086, 17.4173



5.7298, 9.8561, 3.3647

Previews

White Background



This preview shows how the HunterLab color 63.7220, 6.3042, 6.2542 looks on a white background.

Color Contrast Check

Large Text (above 18pt) WCAG AA × Fail

Any Text WCAG AA × Fail

Large Text (above 18pt) WCAG AAA × Fail

Any Text WCAG AAA × Fail

Black Background



This preview shows how the HunterLab color 63.7220, 6.3042, 6.2542 looks on a black background.

Color Contrast Check

Large Text (above 18pt) WCAG AA ✓ Pass

Any Text WCAG AA ✓ Pass

Large Text (above 18pt) WCAG AAA ✓ Pass

Any Text WCAG AAA ✓ Pass

If you want to check with other color combinations, try the [Color Contrast Checker](#).

HunterLab 63.7220, 6.3042, 6.2542 Background



This preview shows how black text looks on a background with the HunterLab color 63.7220, 6.3042, 6.2542.



This preview shows how white text looks on a background with the HunterLab color 63.7220, 6.3042,

Color Blindness Simulation

Color vision deficiency is a very complex topic, and I could not describe the different causes any better than Wikipedia does, so if you want to learn more, you should check out their [article about color blindness](#).

Dichromacy



Original Color

63.7220, 6.3042, 6.2542

Protanopia

63.7892, -2.1572, 4.8359

Deuteranopia

63.6977, 4.7735, 6.1998



Tritanopia

63.5650, 9.2485, 1.5006

Trichromacy



Original Color

63.7220, 6.3042, 6.2542

Protanomaly

63.8282, 0.9160, 5.3868

Deuteranomaly

63.7991, 5.1127, 6.3208

Tritanomaly

63.7213, 8.0905, 3.5576

Monochromacy



Original Color

63.7220, 6.3042, 6.2542

Achromatopsia

64.6440, -3.4492, 3.5122

Achromatomaly

64.3079, -0.2535, 4.5590

CSS Examples

Text

The CSS property to change the color of the text to HunterLab 63.7220, 6.3042, 6.2542 is called "color". The color property can be set on classes, ids or directly on the HTML element.

This example shows how text in the color `rgb(193, 164, 165)` looks like.

```
.text, #text, p{  
    color:rgb(193, 164, 165)  
}
```

If you want to add a text shadow in that color use the text-shadow property, you can generate a text shadow directly with our [CSS Text Shadow Generator](#).

Here you see how black text with a 4 pixel rgb(193, 164, 165) colored shadow looks like.

```
.shadow{ text-shadow: 4px 4px 2px rgb(193, 164, 165) }
```

Border

The CSS property to change the border of an element to HunterLab 63.7220, 6.3042, 6.2542 is called "border".

The border property can be set on classes, ids or directly on the HTML element.

This example shows the color as border, it can be applied via the CSS property "border" or "border-color".

```
.border, #border, table{ border:4px solid rgb(193, 164, 165) }
```


If only the border color should be changed use the property `border-color`.

```
.border{ border-color:rgb(193, 164, 165) }
```

If you want to add a box shadow in that color use:

Here you see how a box with a 4 pixel `rgb(193, 164, 165)` colored shadow looks like.

```
.boxshadow{ -moz-box-shadow:4px 4px 4px  
4px rgb(193, 164, 165); -webkit-box-  
shadow:4px 4px 4px 4px rgb(193, 164, 165);  
box-shadow:4px 4px 4px 4px rgb(193, 164,  
165) }
```

Background

The CSS property to change the background color of an element to HunterLab 63.7220, 6.3042, 6.2542 is called "background". The background property can be set on classes, ids or directly on the HTML element.

```
.background, #background, body{  
background: rgb(193, 164, 165) }
```

If only the background color should be changed can be used:

```
.background{ background-color: rgb(193,  
164, 165) }
```

This example shows the color as background, it is applied via the CSS property "background".

To optimize and compress your CSS code, you can use our [online CSS compressor and optimizer](#) based on csstidy. If you want to create a linear or radial gradient as background or border, check our [CSS Gradient Generator](#).

Hey! You found this booklet interesting? Support Converting Colors with the new Membership Option!

The pro membership hides all ads, plus gives you double the colors in the color bucket, and more awesome pro features!

[Learn more, Memberships starting at \\$2.50/m!](#)

**Follow me
on Twitter!**

@ConvertingColor