

Converting Colors

HunterLab(63.7063, 12.8534,
20.7938)

Have a look what the booklet for
HunterLab(63.7063, 12.8534,
20.7938) contains.

HunterLab(63.7063, 12.8534, 20.7938)	3
<i>Conversions</i>	4
<i>Details</i>	6
<i>Harmonies</i>	12
<i>Previews</i>	24
<i>Color Blindness Simulation</i>	28
<i>CSS Examples</i>	31

Color

**HunterLab(63.7063, 12.8534,
20.7938)**

Conversions

Conversions Part 1

Format	Color
Hex	D89E7F
RGB	216, 158, 127
RGB Percent	85%, 62%, 50%
CMY	0.1529, 0.3804, 0.5020
CMYK	0.00, 0.27, 0.41, 0.15
HSL	21°, 53%, 67%
HSV	21°, 41%, 85%
XYZ	44.3765, 40.5849, 25.5734
YIQ	171.8080, 44.5190, 2.6550

Conversions

Conversions Part 2

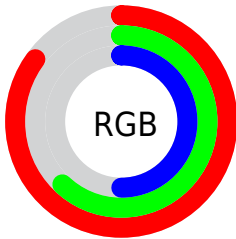
Format	Color
R _Y B	216, 175, 127
Decimal	14196351
CIE Lab	69.89, 17.70, 24.68
CIE LCh	70, 30.369, 54.358
Yxy	40.5869, 0.4015, 0.3672
Android (android.graphics.Color)	4292386431 (0xFFD89E7F)
YUV	171.8080, -22.0903, 38.7564
Hunter-Lab	63.7063, 12.8534, 20.7938

Details

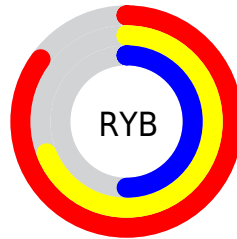
The HunterLab color **63.7063, 12.8534, 20.7938** is a light color, and the websafe version is hex **CC9966**. A complement of this color would be **66.4576, -12.9053, -17.2341**, and the grayscale version is **64.2267, -3.4270, 3.4896**.

A 20% lighter version of the original color is **84.9375, 5.3448, 22.2902**, and **42.6955, 12.3568, 16.5159** is the 20% darker color. If you saturate the color by 10%, you get **59.6259, 17.9519, 23.6584**, and if you desaturate by 10%, it is **68.0382, 8.1212, 17.4343**.

Distribution



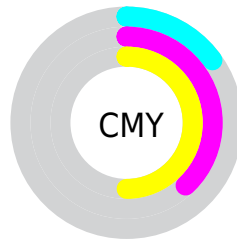
- Red (85%)
- Green (62%)
- Blue (50%)



- Red (85%)
- Yellow (69%)
- Blue (50%)



- Cyan (0%)
- Magenta (27%)
- Yellow (41%)
- Black (15%)



- Cyan (15%)
- Magenta (38%)
- Yellow (50%)

Brightness & Saturation Gradients

These gradients show how the HunterLab color 63.7063, 12.8534, 20.7938 changes by changing the brightness by 10 percent. The first figure shows a shift by +10% for each color and the second figure -10%.

Similar to the brightness gradients but the following saturation gradients show a change of the HunterLab color 63.7063, 12.8534, 20.7938 by changing the saturation by 10% instead.

63.7063, 12.8534,
20.7938

63.7063, 12.8534,
20.7938

186.7059, 12.7317,
37.2608

52.9116, 12.5467,
18.7928

87.2103, 13.2289,
24.6324

42.8053, 12.1536,
16.7114

99.8520, 13.3176,
26.4930

33.4397, 11.6586,
14.5222

113.0516, 13.3466,
28.3262

24.8786, 11.0450,
12.1836

126.7864, 13.3205,
30.1383

17.2065, 10.2905,
9.7304

141.0364, 13.2429,
31.9342

10.5414, 9.3677,
7.3790

155.7836, 13.1171,

0.0000, INF, NaN

33.7179

0.0000, NaN, NaN

171.0116, 12.9459,
35.4925

0.0000, NaN, NaN

■ 63.7063, 12.8534,
20.7938

■ 63.7063, 12.8534,
20.7938

■ 59.6259, 17.9519,
23.6584

■ 68.0382, 8.1212,
17.4343

■ 55.8235, 23.4161,
25.9430

■ 72.5895, 3.7529,
13.6509

■ 52.3345, 29.2027,
27.5635

■ 77.3380, -0.2763,
9.5075

■ 49.1945, 35.2253,
28.4455

■ 82.2629, -3.9939,
5.0564

■ 46.4378, 41.3365,
28.5517

■ 87.3466, -7.4290,
0.3408

■ 44.3449, 46.5829,
28.1406

■ 92.5179, -10.9202,
-3.8114

■ 96.6121, -17.3302,
1.1685

Harmonies

Analogous

The Analogous color harmony consists of three colors that are next to each other on the color wheel.



63.7078, 22.6858, 13.0461



63.7063, 12.8534, 20.7938



63.7078, -0.7663, 23.8595

Triad

The Triadic color harmony groups three colors that are evenly spaced from another and form a triangle on the color wheel.



63.7078, 12.8506, 20.7947



63.7078, -27.7717, 5.9058



63.7078, 7.9434, -24.1588

Complementary

The Complementary color scheme is a pair of colors which are on the opposite of each other on the color wheel.



63.7063, 12.8534, 20.7938



66.4576, -12.9053, -17.2341

Split Complementary

Split-complementary colors differ from the complementary color scheme. The scheme consists of three colors, the original color and two neighbors of the complement color.



63.7078, -5.9969, -27.2025



63.7063, 12.8534, 20.7938



63.7078, -25.8693, -7.8760

Square

The Square scheme is like the rectangle color scheme, but the four colors are evenly spaced on the color wheel.



63.7078, 12.8506, 20.7947



63.7078, -23.6107, 16.5210



63.7078, -18.1741, -20.7137



63.7078, 19.6876, -13.1098

Rectangle

The Rectangle color scheme consists of four colors that form a rectangle on the color wheel.



63.7063, 12.8534, 20.7938



63.7078, -9.8656, 23.4336



63.7078, -18.1741, -20.7137



63.7078, 3.3285, -26.2388

Sweetspot

The Sweet Spot groups the original color and five complimentary colors.



63.7078, 12.8506, 20.7947



92.7980, 0.0929, 11.9444



57.7385, 37.4790, -11.6595



42.5783, 0.3314, 5.8394

0.0000, NaN, NaN



46.2646, -2.4686, 2.5136

Same Dimension

The Same Dimension uses a secret algorithm to generate beautiful new colors.



63.7078, 12.8506, 20.7947



72.7891, 20.5592, 27.9955



76.1461, -8.8379, 31.1319



36.2233, -0.4459, 4.0451



34.3840, 35.1035, 21.8018



9.3044, 6.4176, 5.8457

Inverse Universe

The Inverse Universe completely reimagines the original color for something new.



66.4576, -12.9053, -17.2341



76.6765, -16.2141, -26.1914



53.6347, 8.6294, -38.6153



36.5318, -3.2878, -0.1670



37.9155, -4.8817, -36.8528



10.0962, -2.3988, -7.4410

Previews

White Background



This preview shows how the HunterLab color 63.7063, 12.8534, 20.7938 looks on a white background.

Color Contrast Check

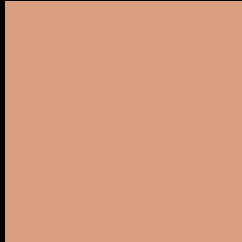
Large Text (above 18pt) WCAG AA × Fail

Any Text WCAG AA × Fail

Large Text (above 18pt) WCAG AAA × Fail

Any Text WCAG AAA × Fail

Black Background



This preview shows how the HunterLab color 63.7063, 12.8534, 20.7938 looks on a black background.

Color Contrast Check

Large Text (above 18pt) WCAG AA ✓ Pass

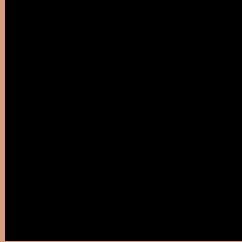
Any Text WCAG AA ✓ Pass

Large Text (above 18pt) WCAG AAA ✓ Pass

Any Text WCAG AAA ✓ Pass

If you want to check with other color combinations, try the [Color Contrast Checker](#).

HunterLab 63.7063, 12.8534, 20.7938 Background



This preview shows how black text looks on a background with the HunterLab color 63.7063, 12.8534, 20.7938.



This preview shows how white text looks on a background with the HunterLab color 63.7063, 12.8534,

Color Blindness Simulation

Color vision deficiency is a very complex topic, and I could not describe the different causes any better than Wikipedia does, so if you want to learn more, you should check out their [article about color blindness](#).

Dichromacy



Original Color

63.7063, 12.8534, 20.7938

Protanopia

63.8470, -5.2479, 18.6438

Deuteranopia

63.7290, 4.4282, 20.9832



Tritanopia

63.7797, 21.6240, 7.0297

Trichromacy



Original Color

63.7063, 12.8534, 20.7938

Protanomaly

63.5456, 1.1022, 19.1411

Deuteranomaly

63.7279, 7.2889, 21.0323

Tritanomaly

63.8256, 18.4087, 12.4538

Monochromacy



Original Color

63.7063, 12.8534, 20.7938

Achromatopsia

64.2295, -3.4271, 3.4897

Achromatomaly

63.8194, 1.7565, 10.1357

CSS Examples

Text

The CSS property to change the color of the text to HunterLab 63.7063, 12.8534, 20.7938 is called "color". The color property can be set on classes, ids or directly on the HTML element.

This example shows how text in the color `rgb(216, 158, 127)` looks like.

```
.text, #text, p{  
    color:rgb(216, 158, 127)  
}
```

If you want to add a text shadow in that color use the text-shadow property, you can generate a text shadow directly with our [CSS Text Shadow Generator](#).

Here you see how black text with a 4 pixel rgb(216, 158, 127) colored shadow looks like.

```
.shadow{ text-shadow: 4px 4px 2px rgb(216, 158, 127) }
```

Border

The CSS property to change the border of an element to HunterLab 63.7063, 12.8534, 20.7938 is called "border". The border property can be set on classes, ids or directly on the HTML element.

This example shows the color as border, it can be applied via the CSS property "border" or "border-color".

```
.border, #border, table{ border:4px solid rgb(216, 158, 127) }
```


If only the border color should be changed use the property `border-color`.

```
.border{ border-color:rgb(216, 158, 127) }
```

If you want to add a box shadow in that color use:

Here you see how a box with a 4 pixel `rgb(216, 158, 127)` colored shadow looks like.

```
.boxshadow{ -moz-box-shadow:4px 4px 4px  
4px rgb(216, 158, 127); -webkit-box-  
shadow:4px 4px 4px 4px rgb(216, 158, 127);  
box-shadow:4px 4px 4px 4px rgb(216, 158,  
127) }
```

Background

The CSS property to change the background color of an element to HunterLab 63.7063, 12.8534, 20.7938 is called "background". The background property can be set on classes, ids or directly on the HTML element.

```
.background, #background, body{  
background: rgb(216, 158, 127) }
```

If only the background color should be changed can be used:

```
.background{ background-color: rgb(216,  
158, 127) }
```

This example shows the color as background, it is applied via the CSS property "background".

To optimize and compress your CSS code, you can use our [online CSS compressor and optimizer](#) based on csstidy. If you want to create a linear or radial gradient as background or border, check our [CSS Gradient Generator](#).

Hey! You found this booklet interesting? Support Converting Colors with the new Membership Option!

The pro membership hides all ads, plus gives you double the colors in the color bucket, and more awesome pro features!

[Learn more, Memberships starting at \\$2.50/m!](#)

**Follow me
on Twitter!**

@ConvertingColor