

Converting Colors

HunterLab(63.7271, 25.2379,
-1.0733)

Have a look what the booklet for
HunterLab(63.7271, 25.2379,
-1.0733) contains.

HunterLab(63.7848, 25.2841, -0.8889)	3
<i>Conversions</i>	4
<i>Details</i>	6
<i>Harmonies</i>	12
<i>Previews</i>	24
<i>Color Blindness Simulation</i>	28
<i>CSS Examples</i>	31

Color

**HunterLab(63.7848, 25.2841,
-0.8889)**

Conversions

Conversions Part 1

Format	Color
Hex	DC97B5
RGB	220, 151, 181
RGB Percent	86%, 59%, 71%
CMY	0.1373, 0.4078, 0.2902
CMYK	0.00, 0.31, 0.18, 0.14
HSL	334°, 50%, 73%
HSV	334°, 31%, 86%
XYZ	48.9222, 40.6850, 48.9905
YIQ	175.0510, 31.4940, 23.9580

Conversions

Conversions Part 2

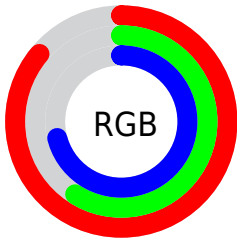
Format	Color
R_{YB}	220, 151, 181
Decimal	14456757
CIE _{Lab}	69.96, 30.21, -5.06
CIE _{LCh}	70, 30.629, 350.499
Yxy	40.6869, 0.3530, 0.2936
Android (android.graphics.Color)	4292646837 (0xFFDC97B5)
YUV	175.0510, 2.9329, 39.4203
Hunter-Lab	63.7848, 25.2841, -0.8889

Details

The HunterLab color $63.7848, 25.2841, -0.8889$ is a light color, and the websafe version is hex `CC99CC`. A complement of this color would be $78.4120, -28.7450, 10.9765$, and the grayscale version is $65.4759, -3.4936, 3.5574$.

A 20% lighter version of the original color is $84.5677, 17.9046, -3.7485$, and $42.8657, 23.5423, -1.4211$ is the 20% darker color. If you saturate the color by 10%, you get $58.1084, 34.9673, -1.6631$, and if you desaturate by 10%, it is $69.9819, 15.6099, 0.4353$.

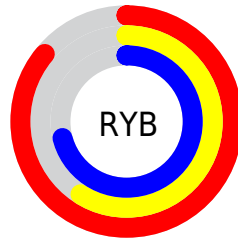
Distribution



Red (86%)

Green (59%)

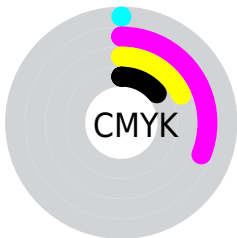
Blue (71%)



Red (86%)

Yellow (59%)

Blue (71%)

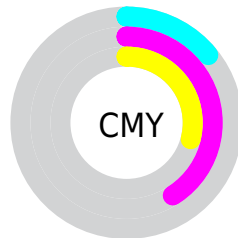


Cyan (0%)

Magenta (31%)

Yellow (18%)

Black (14%)



Cyan (14%)

Magenta (41%)

Yellow (29%)

Brightness & Saturation Gradients

These gradients show how the HunterLab color 63.7848, 25.2841, -0.8889 changes by changing the brightness by 10 percent. The first figure shows a shift by +10% for each color and the second figure -10%.

Similar to the brightness gradients but the following saturation gradients show a change of the HunterLab color 63.7848, 25.2841, -0.8889 by changing the saturation by 10% instead.

63.7848, 25.2841,
-0.8889

63.7848, 25.2841,
-0.8889

186.8182, 29.4245,
4.0384

52.9854, 24.4207,
-1.2323

87.2974, 26.7145,
-0.0578

42.8740, 23.4495,
-1.5244

99.9431, 27.3035,
0.4206

33.5029, 22.3555,
-1.7578

113.1465, 27.8170,
0.9378

24.9360, 21.1259,
-1.9249

126.8851, 28.2606,
1.4915

17.2572, 19.7532,
-2.0146

141.1386, 28.6391,
2.0800

10.5845, 18.2625,
-2.0111

155.8892, 28.9569,

0.0000, INF, -NF

2.7015

0.0000, NaN, NaN

171.1206, 29.2176,
3.3548

0.0000, NaN, NaN

■ 63.7848, 25.2841,
-0.8889

■ 63.7848, 25.2841,
-0.8889

■ 58.1084, 34.9673,
-1.6631

■ 69.9819, 15.6099,
0.4353

■ 53.0442, 44.4200,
-1.7571

■ 76.6149, 6.0792,
2.1910

■ 48.7009, 53.2271,
-1.0325

■ 83.6196, -3.2586,
4.2885

■ 45.1852, 60.7997,
0.6110

■ 90.9434, -12.3934,
6.6580

■ 42.5789, 66.4613,
3.1754

■ 96.5493, -18.3212,
7.0143

■ 40.9027, 69.6835,
6.5050

■ 96.9308, -16.1835,
1.5759

■ 40.0671, 70.7076,
9.6779

Harmonies

Analogous

The Analogous color harmony consists of three colors that are next to each other on the color wheel.



63.7863, 18.6522, -14.9970



63.7848, 25.2841, -0.8889



63.7863, 23.7301, 11.7817

Triad

The Triadic color harmony groups three colors that are evenly spaced from another and form a triangle on the color wheel.



63.7863, 25.2816, -0.8876



63.7863, -12.5365, 23.0561



63.7863, -19.5972, -19.5375

Complementary

The Complementary color scheme is a pair of colors which are on the opposite of each other on the color wheel.



63.7848, 25.2841, -0.8889



78.4120, -28.7450, 10.9765

Split Complementary

Split-complementary colors differ from the complementary color scheme. The scheme consists of three colors, the original color and two neighbors of the complement color.



63.7863, -26.6504, -6.1318



63.7848, 25.2841, -0.8889



63.7863, -22.8238, 17.6710

Square

The Square scheme is like the rectangle color scheme, but the four colors are evenly spaced on the color wheel.



63.7863, 25.2816, -0.8876



63.7863, 1.0840, 23.8694



63.7863, -27.7786, 7.5442



63.7863, -7.7768, -27.1913

Rectangle

The Rectangle color scheme consists of four colors that form a rectangle on the color wheel.



63.7848, 25.2841, -0.8889



63.7863, 18.3122, 17.9274



63.7863, -27.7786, 7.5442



63.7863, -22.5600, -15.4345

Sweetspot

The Sweet Spot groups the original color and five complimentary colors.



63.7863, 25.2816, -0.8876



92.4196, 4.6407, 3.1245



61.7374, 21.9525, -26.5997



42.2051, 2.9018, 1.2857

0.0000, NaN, NaN



46.2646, -2.4686, 2.5136

Same Dimension

The Same Dimension uses a secret algorithm to generate beautiful new colors.



63.7863, 25.2816, -0.8876



70.6602, 37.8578, -1.7643



63.8059, 19.0760, 12.4428



36.2561, 1.9822, 1.1963



30.7298, 54.2960, 6.9090



7.9301, 14.2154, 0.2029

Inverse Universe

The Inverse Universe completely reimagines the original color for something new.



63.7863, 25.2816, -0.8876



70.6602, 37.8578, -1.7643



78.1931, -21.8321, -3.5416



36.2561, 1.9822, 1.1963



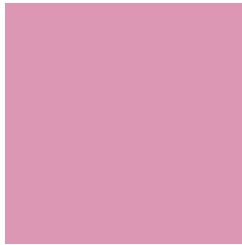
30.7298, 54.2960, 6.9090



7.9301, 14.2154, 0.2029

Previews

White Background



This preview shows how the HunterLab color 63.7848, 25.2841, -0.8889 looks on a white background.

Color Contrast Check

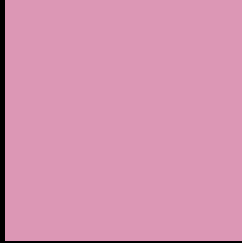
Large Text (above 18pt) WCAG AA × Fail

Any Text WCAG AA × Fail

Large Text (above 18pt) WCAG AAA × Fail

Any Text WCAG AAA × Fail

Black Background



This preview shows how the HunterLab color 63.7848, 25.2841, -0.8889 looks on a black background.

Color Contrast Check

Large Text (above 18pt) WCAG AA ✓ Pass

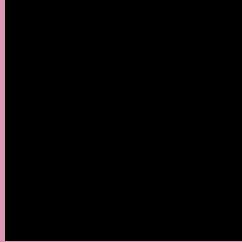
Any Text WCAG AA ✓ Pass

Large Text (above 18pt) WCAG AAA ✓ Pass

Any Text WCAG AAA ✓ Pass

If you want to check with other color combinations, try the [Color Contrast Checker](#).

HunterLab 63.7848, 25.2841, -0.8889 Background



This preview shows how black text looks on a background with the HunterLab color 63.7848, 25.2841, -0.8889.



This preview shows how white text looks on a background with the HunterLab color 63.7848, 25.2841, -0.8889.

-0.8889.

Color Blindness Simulation

Color vision deficiency is a very complex topic, and I could not describe the different causes any better than Wikipedia does, so if you want to learn more, you should check out their [article about color blindness](#).

Dichromacy



Original Color

63.7848, 25.2841, -0.8889

Protanopia

63.9723, 0.0746, -7.3386

Deuteranopia

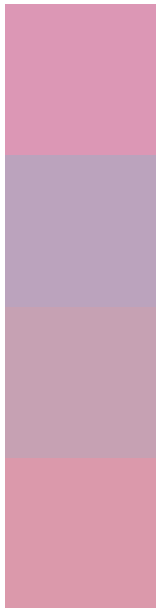
63.8757, 4.6909, 0.3464



Tritanopia

63.8226, 20.4895, 6.6167

Trichromacy



Original Color

63.7848, 25.2841, -0.8889

Protanomaly

63.5872, 8.8019, -5.5543

Deuteranomaly

63.8359, 11.7976, -0.0689

Tritanomaly

63.8614, 22.2832, 3.9711

Monochromacy



Original Color

63.7848, 25.2841, -0.8889

Achromatopsia

65.4745, -3.4936, 3.5574

Achromatomaly

64.4384, 6.5068, 1.5489

CSS Examples

Text

The CSS property to change the color of the text to HunterLab 63.7848, 25.2841, -0.8889 is called "color". The color property can be set on classes, ids or directly on the HTML element.

This example shows how text in the color `rgb(220, 151, 181)` looks like.

```
.text, #text, p{  
    color:rgb(220, 151, 181)  
}
```

If you want to add a text shadow in that color use the text-shadow property, you can generate a text shadow directly with our [CSS Text Shadow Generator](#).

Here you see how black text with a 4 pixel rgb(220, 151, 181) colored shadow looks like.

```
.shadow{ text-shadow: 4px 4px 2px rgb(220, 151, 181) }
```

Border

The CSS property to change the border of an element to HunterLab 63.7848, 25.2841, -0.8889 is called "border". The border property can be set on classes, ids or directly on the HTML element.

This example shows the color as border, it can be applied via the CSS property "border" or "border-color".

```
.border, #border, table{ border:4px solid rgb(220, 151, 181) }
```


If only the border color should be changed use the property `border-color`.

```
.border{ border-color:rgb(220, 151, 181) }
```

If you want to add a box shadow in that color use:

Here you see how a box with a 4 pixel `rgb(220, 151, 181)` colored shadow looks like.

```
.boxshadow{ -moz-box-shadow:4px 4px 4px  
4px rgb(220, 151, 181); -webkit-box-  
shadow:4px 4px 4px 4px rgb(220, 151, 181);  
box-shadow:4px 4px 4px 4px rgb(220, 151,  
181) }
```

Background

The CSS property to change the background color of an element to HunterLab 63.7848, 25.2841, -0.8889 is called "background". The background property can be set on classes, ids or directly on the HTML element.

```
.background, #background, body{  
background: rgb(220, 151, 181) }
```

If only the background color should be changed can be used:

```
.background{ background-color: rgb(220,  
151, 181) }
```

This example shows the color as background, it is applied via the CSS property "background".

To optimize and compress your CSS code, you can use our [online CSS compressor and optimizer](#) based on csstidy. If you want to create a linear or radial gradient as background or border, check our [CSS Gradient Generator](#).

Hey! You found this booklet interesting? Support Converting Colors with the new Membership Option!

The pro membership hides all ads, plus gives you double the colors in the color bucket, and more awesome pro features!

[Learn more, Memberships starting at \\$2.50/m!](#)

**Follow me
on Twitter!**

@ConvertingColor