

Converting Colors

HunterLab(63.7688, 6.3463,
7.1885)

Have a look what the booklet for
HunterLab(63.7688, 6.3463, 7.1885)
contains.

HunterLab(63.7688, 6.3463, 7.1885)	3
<i>Conversions</i>	4
<i>Details</i>	6
<i>Harmonies</i>	12
<i>Previews</i>	24
<i>Color Blindness Simulation</i>	28
<i>CSS Examples</i>	31

Color

**HunterLab(63.7688, 6.3463,
7.1885)**

Conversions

Conversions Part 1

Format	Color
Hex	C2A4A3
RGB	194, 164, 163
RGB Percent	76%, 64%, 64%
CMY	0.2392, 0.3568, 0.3608
CMYK	0.00, 0.15, 0.16, 0.24
HSL	2°, 20%, 70%
HSV	2°, 16%, 76%
XYZ	42.1345, 40.6646, 40.2786
YIQ	172.8560, 18.2010, 6.0490

Conversions

Conversions Part 2

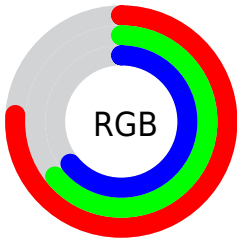
Format	Color
RYB	194, 164, 163
Decimal	12756131
CIELab	69.94, 10.81, 4.60
CIElCh	70, 11.749, 23.064
Yxy	40.6664, 0.3423, 0.3304
Android (android.graphics.Color)	4290946211 (0xFFC2A4A3)
YUV	172.8560, -4.8590, 18.5433
Hunter-Lab	63.7688, 6.3463, 7.1885

Details

The HunterLab color $63.7688, 6.3463, 7.1885$ is a light color, and the websafe version is hex $CC9999$. A complement of this color would be $70.5835, -12.4726, 0.4020$, and the grayscale version is $64.5997, -3.4469, 3.5098$.

A 20% lighter version of the original color is $87.3122, 6.1958, 8.8682$, and $42.7919, 6.3663, 5.6426$ is the 20% darker color. If you saturate the color by 10%, you get $58.1316, 13.1504, 9.3021$, and if you desaturate by 10%, it is $69.7412, -0.1635, 5.1624$.

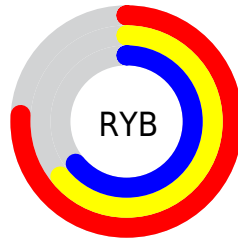
Distribution



Red (76%)

Green (64%)

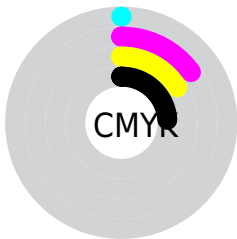
Blue (64%)



Red (76%)

Yellow (64%)

Blue (64%)

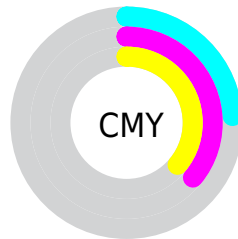


Cyan (0%)

Magenta (15%)

Yellow (16%)

Black (24%)



Cyan (24%)

Magenta (36%)

Yellow (36%)

Brightness & Saturation Gradients

These gradients show how the HunterLab color 63.7688, 6.3463, 7.1885 changes by changing the brightness by 10 percent. The first figure shows a shift by +10% for each color and the second figure -10%.

Similar to the brightness gradients but the following saturation gradients show a change of the HunterLab color 63.7688, 6.3463, 7.1885 by changing the saturation by 10% instead.

63.7688, 6.3463,
7.1885

63.7688, 6.3463,
7.1885

186.7952, 3.7687,
15.5739

52.9703, 6.3712,
6.3642

87.2796, 6.1049,
8.9038

42.8600, 6.3266,
5.5592

99.9245, 5.9034,
9.7932

33.4900, 6.2003,
4.7727

113.1271, 5.6530,
10.7041

24.9242, 5.9785,
4.0017

126.8649, 5.3570,
11.6363

17.2468, 5.6411,
3.2400

141.1177, 5.0183,
12.5897

10.5757, 5.1580,
2.4887

155.8676, 4.6393,

0.0000, INF, NaN

13.5640

0.0000, NaN, NaN

171.0984, 4.2222,
14.5588

0.0000, NaN, NaN

■ 63.7688, 6.3463,
7.1885

■ 63.7688, 6.3463,
7.1885

■ 58.1316, 13.1504,
9.3021

■ 69.7412, -0.1635,
5.1624

■ 52.8863, 20.2439,
11.4902

■ 75.9960, -6.3916,
3.2188

■ 48.1091, 27.5553,
13.7224

■ 82.4958, -12.3709,
1.3517

■ 43.8892, 34.9138,
15.9323

■ 89.2098, -18.1355,
-0.4481

■ 40.3252, 42.0011,
18.0051

■ 94.9786, -23.2709,
-0.9405

■ 37.5124, 48.3345,
19.7770

■ 35.5178, 53.3396,
21.0684

■ 34.3453, 56.5513,
21.7668

■ 34.0672, 57.3126,
21.9954

Harmonies

Analogous

The Analogous color harmony consists of three colors that are next to each other on the color wheel.



63.7702, 7.1378, 2.2773



63.7688, 6.3463, 7.1885



63.7702, 2.8986, 10.8128

Triad

The Triadic color harmony groups three colors that are evenly spaced from another and form a triangle on the color wheel.



63.7702, 6.3443, 7.1895



63.7702, -11.4273, 9.0798



63.7702, -4.6444, -7.0348

Complementary

The Complementary color scheme is a pair of colors which are on the opposite of each other on the color wheel.



63.7688, 6.3463, 7.1885



70.5835, -12.4726, 0.4020

Split Complementary

Split-complementary colors differ from the complementary color scheme. The scheme consists of three colors, the original color and two neighbors of the complement color.



63.7702, -9.4748, -4.8626



63.7688, 6.3463, 7.1885



63.7702, -13.3064, 4.6424

Square

The Square scheme is like the rectangle color scheme, but the four colors are evenly spaced on the color wheel.



63.7702, 6.3443, 7.1895



63.7702, -7.3889, 11.8396



63.7702, -12.6036, -0.4855



63.7702, 0.6771, -6.2118

Rectangle

The Rectangle color scheme consists of four colors that form a rectangle on the color wheel.



63.7688, 6.3463, 7.1885



63.7702, -0.3795, 12.1464



63.7702, -12.6036, -0.4855



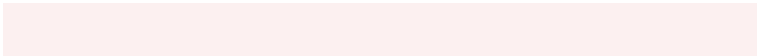
63.7702, -6.3771, -6.6251

Sweetspot

The Sweet Spot groups the original color and five complimentary colors.



63.7702, 6.3443, 7.1895



94.6150, -0.9892, 6.7087



64.4485, 11.9199, -6.7532



43.9993, -0.1763, 3.2288

0.0000, NaN, NaN



46.2646, -2.4686, 2.5136

Same Dimension

The Same Dimension uses a secret algorithm to generate beautiful new colors.



63.7702, 6.3443, 7.1895



83.2605, 11.5380, 10.6093



68.0890, -1.2298, 11.7615



31.8260, 0.9445, 2.7459



27.6652, 46.3287, 17.8583



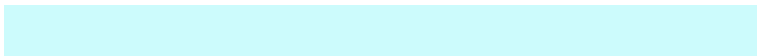
5.9086, 9.1052, 3.8002

Inverse Universe

The Inverse Universe completely reimagines the original color for something new.



70.5835, -12.4726, 0.4020



94.2830, -18.9473, -0.3847



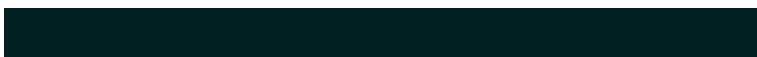
65.9668, -5.1508, -5.3151



33.7205, -4.2774, 0.8616



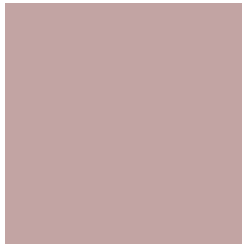
51.1403, -25.9758, -7.8465



10.7136, -5.4999, -1.5184

Previews

White Background



This preview shows how the HunterLab color 63.7688, 6.3463, 7.1885 looks on a white background.

Color Contrast Check

Large Text (above 18pt) WCAG AA × Fail

Any Text WCAG AA × Fail

Large Text (above 18pt) WCAG AAA × Fail

Any Text WCAG AAA × Fail

Black Background



This preview shows how the HunterLab color 63.7688, 6.3463, 7.1885 looks on a black background.

Color Contrast Check

Large Text (above 18pt) WCAG AA ✓ Pass

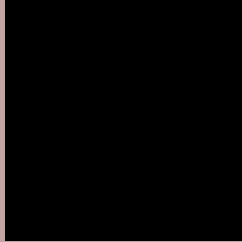
Any Text WCAG AA ✓ Pass

Large Text (above 18pt) WCAG AAA ✓ Pass

Any Text WCAG AAA ✓ Pass

If you want to check with other color combinations, try the [Color Contrast Checker](#).

HunterLab 63.7688, 6.3463, 7.1885 Background



This preview shows how black text looks on a background with the HunterLab color 63.7688, 6.3463, 7.1885.



This preview shows how white text looks on a background with the HunterLab color 63.7688, 6.3463,

7.1885.

Color Blindness Simulation

Color vision deficiency is a very complex topic, and I could not describe the different causes any better than Wikipedia does, so if you want to learn more, you should check out their [article about color blindness](#).

Dichromacy



Original Color

63.7688, 6.3463, 7.1885

Protanopia

63.7600, -2.3162, 5.2519

Deuteranopia

63.7424, 4.8097, 7.1320



Tritanopia

63.6694, 9.5904, 1.6329

Trichromacy



Original Color

63.7688, 6.3463, 7.1885

Protanomaly

63.7993, 0.7598, 5.7996

Deuteranomaly

63.8444, 5.1510, 7.2523

Tritanomaly

63.8254, 8.4336, 3.6862

Monochromacy



Original Color

63.7688, 6.3463, 7.1885

Achromatopsia

64.6440, -3.4492, 3.5122

Achromatomaly

64.3722, -0.0917, 5.0916

CSS Examples

Text

The CSS property to change the color of the text to HunterLab 63.7688, 6.3463, 7.1885 is called "color". The color property can be set on classes, ids or directly on the HTML element.

This example shows how text in the color `rgb(194, 164, 163)` looks like.

```
.text, #text, p{  
    color:rgb(194, 164, 163)  
}
```

If you want to add a text shadow in that color use the text-shadow property, you can generate a text shadow directly with our [CSS Text Shadow Generator](#).

Here you see how black text with a 4 pixel rgb(194, 164, 163) colored shadow looks like.

```
.shadow{ text-shadow: 4px 4px 2px rgb(194, 164, 163) }
```

Border

The CSS property to change the border of an element to HunterLab 63.7688, 6.3463, 7.1885 is called "border".

The border property can be set on classes, ids or directly on the HTML element.

This example shows the color as border, it can be applied via the CSS property "border" or "border-color".

```
.border, #border, table{ border:4px solid rgb(194, 164, 163) }
```


If only the border color should be changed use the property `border-color`.

```
.border{ border-color:rgb(194, 164, 163) }
```

If you want to add a box shadow in that color use:

Here you see how a box with a 4 pixel `rgb(194, 164, 163)` colored shadow looks like.

```
.boxshadow{ -moz-box-shadow:4px 4px 4px  
4px rgb(194, 164, 163); -webkit-box-  
shadow:4px 4px 4px 4px rgb(194, 164, 163);  
box-shadow:4px 4px 4px 4px rgb(194, 164,  
163) }
```

Background

The CSS property to change the background color of an element to HunterLab 63.7688, 6.3463, 7.1885 is called "background". The background property can be set on classes, ids or directly on the HTML element.

```
.background, #background, body{  
background: rgb(194, 164, 163) }
```

If only the background color should be changed can be used:

```
.background{ background-color: rgb(194,  
164, 163) }
```

This example shows the color as background, it is applied via the CSS property "background".

To optimize and compress your CSS code, you can use our [online CSS compressor and optimizer](#) based on csstidy. If you want to create a linear or radial gradient as background or border, check our [CSS Gradient Generator](#).

Hey! You found this booklet interesting? Support Converting Colors with the new Membership Option!

The pro membership hides all ads, plus gives you double the colors in the color bucket, and more awesome pro features!

[Learn more, Memberships starting at \\$2.50/m!](#)

**Follow me
on Twitter!**

@ConvertingColor