

Converting Colors

HunterLab(63.9322, 13.5907,
10.3131)

Have a look what the booklet for
HunterLab(63.9322, 13.5907,
10.3131) contains.

HunterLab(63.9517, 13.6235, 10.4855)	3
<i>Conversions</i>	4
<i>Details</i>	6
<i>Harmonies</i>	12
<i>Previews</i>	24
<i>Color Blindness Simulation</i>	28
<i>CSS Examples</i>	31

Color

**HunterLab(63.9517, 13.6235,
10.4855)**

Conversions

Conversions Part 1

Format	Color
Hex	D29F9C
RGB	210, 159, 156
RGB Percent	82%, 62%, 61%
CMY	0.1765, 0.3764, 0.3882
CMYK	0.00, 0.24, 0.26, 0.18
HSL	3°, 37%, 72%
HSV	3°, 26%, 82%
XYZ	44.9772, 40.8982, 36.9760
YIQ	173.9070, 31.3590, 9.8790

Conversions

Conversions Part 2

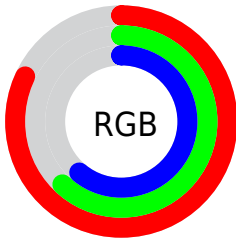
Format	Color
R _Y B	210, 159, 156
Decimal	13803420
CIE Lab	70.11, 18.49, 8.92
CIE LCh	70, 20.529, 25.760
Yxy	40.9001, 0.3661, 0.3329
Android (android.graphics.Color)	4291993500 (0xFFD29F9C)
YUV	173.9070, -8.8282, 31.6536
Hunter-Lab	63.9517, 13.6235, 10.4855

Details

The HunterLab color **63.9517, 13.6235, 10.4855** is a light color, and the websafe version is hex **CC9999**. A complement of this color would be **75.0633, -18.0367, -2.2227**, and the grayscale version is **65.0479, -3.4708, 3.5342**.

A 20% lighter version of the original color is **86.0269, 9.0555, 11.1453**, and **42.9014, 12.8544, 8.1908** is the 20% darker color. If you saturate the color by 10%, you get **58.2808, 21.1604, 12.9638**, and if you desaturate by 10%, it is **70.0364, 6.4039, 8.0551**.

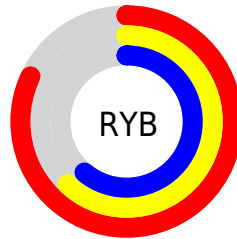
Distribution



Red (82%)

Green (62%)

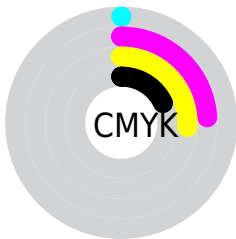
Blue (61%)



Red (82%)

Yellow (62%)

Blue (61%)

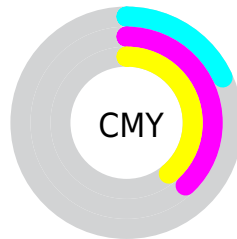


Cyan (0%)

Magenta (24%)

Yellow (26%)

Black (18%)



Cyan (18%)


Magenta (38%)


Yellow (39%)

Brightness & Saturation Gradients


These gradients show how the HunterLab color 63.9517, 13.6235, 10.4855 changes by changing the brightness by 10 percent. The first figure shows a shift by +10% for each color and the second figure -10%.


Similar to the brightness gradients but the following saturation gradients show a change of the HunterLab color 63.9517, 13.6235, 10.4855 by changing the saturation by 10% instead.


 63.9517, 13.6235,
10.4855


 63.9517, 13.6235,
10.4855


187.0569, 13.7688,
20.5178

 53.1423, 13.2820,
9.4259


 87.4827, 14.0656,
12.6287

 43.0203, 12.8523,
8.3667


 100.1369, 14.1856,
13.7150

 33.6376, 12.3191,
7.3026


113.3486, 14.2449,
14.8136

 25.0581, 11.6656,
6.2225

127.0950, 14.2481,
15.9256

 17.3652, 10.8698,
5.1076

141.3561, 14.1990,
17.0515

 10.6763, 9.9059,
4.1726

156.1140, 14.1009,

 1.0826, 74.3597,

18.1919

0.7578

171.3525, 13.9567,
19.3473

0.0000, NaN, NaN

0.0000, NaN, NaN

■ 63.9517, 13.6235,
10.4855

■ 63.9517, 13.6235,
10.4855

■ 58.2808, 21.1604,
12.9638

■ 70.0364, 6.4039,
8.0551

■ 53.0959, 28.9600,
15.4474

■ 76.4680, -0.4857,
5.6859

■ 48.4899, 36.8595,
17.8617

■ 83.1979, -7.0706,
3.3824

■ 44.5645, 44.5517,
20.0834

■ 90.1863, -13.3851,
1.1412

■ 41.4203, 51.5580,

■ 96.1466, -19.0122,

21.9423

0.5712

■ 39.1331, 57.2830,
23.2554

■ 37.7203, 61.1964,
23.9081

■ 37.3591, 62.2221,
24.1098

Harmonies

Analogous

The Analogous color harmony consists of three colors that are next to each other on the color wheel.



63.9532, 15.5486, 2.2020



63.9517, 13.6235, 10.4855



63.9532, 7.0334, 16.0834

Triad

The Triadic color harmony groups three colors that are evenly spaced from another and form a triangle on the color wheel.



63.9532, 13.6211, 10.4866



63.9532, -17.6301, 12.3877



63.9532, -4.7414, -16.0635

Complementary

The Complementary color scheme is a pair of colors which are on the opposite of each other on the color wheel.



63.9517, 13.6235, 10.4855



75.0633, -18.0367, -2.2227

Split Complementary

Split-complementary colors differ from the complementary color scheme. The scheme consists of three colors, the original color and two neighbors of the complement color.



63.9532, -13.2344, -12.3585



63.9517, 13.6235, 10.4855



63.9532, -20.3993, 4.7344

Square

The Square scheme is like the rectangle color scheme, but the four colors are evenly spaced on the color wheel.



63.9532, 13.6211, 10.4866



63.9532, -11.0543, 17.0653



63.9532, -18.8371, -4.4190



63.9532, 4.5989, -13.9452

Rectangle

The Rectangle color scheme consists of four colors that form a rectangle on the color wheel.



63.9517, 13.6235, 10.4855



63.9532, 1.0735, 17.9568



63.9532, -18.8371, -4.4190



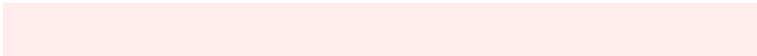
63.9532, -7.7846, -15.4449

Sweetspot

The Sweet Spot groups the original color and five complimentary colors.



63.9532, 13.6211, 10.4866



93.3132, 1.3978, 7.7762



64.8064, 23.6631, -13.8353



42.6017, 1.2454, 3.8043

0.0000, NaN, NaN



46.2646, -2.4686, 2.5136

Same Dimension

The Same Dimension uses a secret algorithm to generate beautiful new colors.



63.9532, 13.6211, 10.4866



75.6147, 22.2100, 14.7959



71.4799, -0.0420, 17.9558



34.5141, 0.9419, 3.0540



29.2593, 48.3221, 18.8754



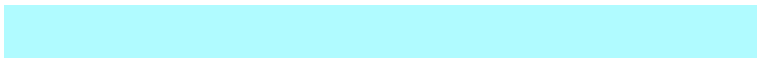
7.1874, 10.5467, 4.6135

Inverse Universe

The Inverse Universe completely reimagines the original color for something new.



75.0633, -18.0367, -2.2227



92.2986, -25.5352, -4.3464



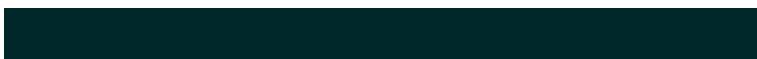
66.6973, -5.0516, -13.1913



36.4550, -4.5507, 0.8444



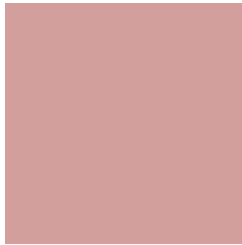
52.5480, -25.7767, -10.0358



12.5661, -6.2667, -2.1784

Previews

White Background



This preview shows how the HunterLab color 63.9517, 13.6235, 10.4855 looks on a white background.

Color Contrast Check

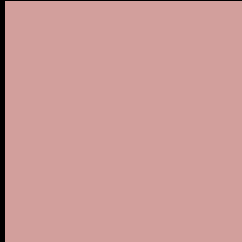
Large Text (above 18pt) WCAG AA × Fail

Any Text WCAG AA × Fail

Large Text (above 18pt) WCAG AAA × Fail

Any Text WCAG AAA × Fail

Black Background



This preview shows how the HunterLab color 63.9517, 13.6235, 10.4855 looks on a black background.

Color Contrast Check

Large Text (above 18pt) WCAG AA ✓ Pass

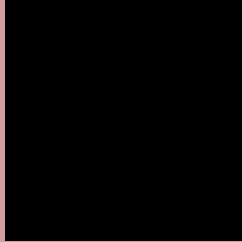
Any Text WCAG AA ✓ Pass

Large Text (above 18pt) WCAG AAA ✓ Pass

Any Text WCAG AAA ✓ Pass

If you want to check with other color combinations, try the [Color Contrast Checker](#).

HunterLab 63.9517, 13.6235, 10.4855 Background



This preview shows how black text looks on a background with the HunterLab color 63.9517, 13.6235, 10.4855.



This preview shows how white text looks on a background with the HunterLab color 63.9517, 13.6235,

Color Blindness Simulation

Color vision deficiency is a very complex topic, and I could not describe the different causes any better than Wikipedia does, so if you want to learn more, you should check out their [article about color blindness](#).

Dichromacy



Original Color

63.9517, 13.6235, 10.4855

Protanopia

64.0949, -2.9523, 7.8234

Deuteranopia

63.8327, 4.6768, 10.6118



Tritanopia

63.8963, 16.9166, 4.8387

Trichromacy



Original Color

63.9517, 13.6235, 10.4855

Protanomaly

64.0268, 2.6754, 8.7026

Deuteranomaly

63.9064, 7.8026, 10.7452

Tritanomaly

64.0179, 15.6487, 7.1934

Monochromacy



Original Color

63.9517, 13.6235, 10.4855

Achromatopsia

65.0590, -3.4714, 3.5348

Achromatomaly

64.5993, 2.0559, 6.2873

CSS Examples

Text

The CSS property to change the color of the text to HunterLab 63.9517, 13.6235, 10.4855 is called "color". The color property can be set on classes, ids or directly on the HTML element.

This example shows how text in the color `rgb(210, 159, 156)` looks like.

```
.text, #text, p{  
    color:rgb(210, 159, 156)  
}
```

If you want to add a text shadow in that color use the text-shadow property, you can generate a text shadow directly with our [CSS Text Shadow Generator](#).

Here you see how black text with a 4 pixel rgb(210, 159, 156) colored shadow looks like.

```
.shadow{ text-shadow: 4px 4px 2px rgb(210, 159, 156) }
```

Border

The CSS property to change the border of an element to HunterLab 63.9517, 13.6235, 10.4855 is called "border". The border property can be set on classes, ids or directly on the HTML element.

This example shows the color as border, it can be applied via the CSS property "border" or "border-color".

```
.border, #border, table{ border:4px solid rgb(210, 159, 156) }
```


If only the border color should be changed use the property border-color.

```
.border{ border-color:rgb(210, 159, 156) }
```

If you want to add a box shadow in that color use:

Here you see how a box with a 4 pixel rgb(210, 159, 156) colored shadow looks like.

```
.boxshadow{ -moz-box-shadow:4px 4px 4px  
4px rgb(210, 159, 156); -webkit-box-  
shadow:4px 4px 4px 4px rgb(210, 159, 156);  
box-shadow:4px 4px 4px 4px rgb(210, 159,  
156) }
```

Background

The CSS property to change the background color of an element to HunterLab 63.9517, 13.6235, 10.4855 is called "background". The background property can be set on classes, ids or directly on the HTML element.

```
.background, #background, body{  
background: rgb(210, 159, 156) }
```

If only the background color should be changed can be used:

```
.background{ background-color: rgb(210,  
159, 156) }
```

This example shows the color as background, it is applied via the CSS property "background".

To optimize and compress your CSS code, you can use our [online CSS compressor and optimizer](#) based on csstidy. If you want to create a linear or radial gradient as background or border, check our [CSS Gradient Generator](#).

Hey! You found this booklet interesting? Support Converting Colors with the new Membership Option!

The pro membership hides all ads, plus gives you double the colors in the color bucket, and more awesome pro features!

[Learn more, Memberships starting at \\$2.50/m!](#)

**Follow me
on Twitter!**

@ConvertingColor