

Converting Colors

HunterLab(64.0031, 2.4098,
9.8725)

Have a look what the booklet for
HunterLab(64.0031, 2.4098, 9.8725)
contains.

HunterLab(63.9457, 2.2387, 9.8664)	3
<i>Conversions</i>	4
<i>Details</i>	6
<i>Harmonies</i>	12
<i>Previews</i>	24
<i>Color Blindness Simulation</i>	28
<i>CSS Examples</i>	31

Color

**HunterLab(63.9457, 2.2387,
9.8664)**

Conversions

Conversions Part 1

Format	Color
Hex	BDA79D
RGB	189, 167, 157
RGB Percent	74%, 65%, 62%
CMY	0.2588, 0.3451, 0.3843
CMYK	0.00, 0.12, 0.17, 0.26
HSL	19°, 20%, 68%
HSV	19°, 17%, 74%
XYZ	40.8907, 40.8905, 37.6357
YIQ	172.4380, 16.3220, 1.5540

Conversions

Conversions Part 2

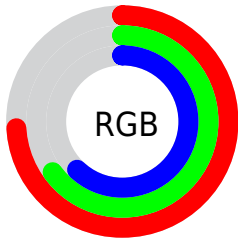
Format	Color
RYB	189, 172, 157
Decimal	12429213
CIELab	70.10, 6.34, 8.09
CIElCh	70, 10.274, 51.925
Yxy	40.8924, 0.3424, 0.3424
Android (android.graphics.Color)	4290619293 (0xFFBDA79D)
YUV	172.4380, -7.6109, 14.5249
Hunter-Lab	63.9457, 2.2387, 9.8664

Details

The HunterLab color $63.9457, 2.2387, 9.8664$ is a light color, and the websafe version is hex 999999 . A complement of this color would be $65.6364, -8.2318, -3.1885$, and the grayscale version is $64.4379, -3.4382, 3.5010$.

A 20% lighter version of the original color is $87.4120, 1.5333, 11.6413$, and $42.9569, 2.6294, 7.6957$ is the 20% darker color. If you saturate the color by 10%, you get $59.8099, 6.1720, 13.0888$, and if you desaturate by 10%, it is $68.2573, -1.4211, 6.4013$.

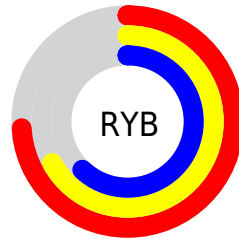
Distribution



Red (74%)

Green (65%)

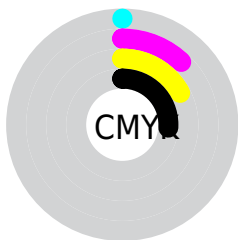
Blue (62%)



Red (74%)

Yellow (67%)

Blue (62%)

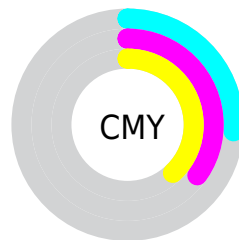


Cyan (0%)

Magenta (12%)

Yellow (17%)

Black (26%)



Cyan (26%)

Magenta (35%)

Yellow (38%)

Brightness & Saturation Gradients

These gradients show how the HunterLab color 63.9457, 2.2387, 9.8664 changes by changing the brightness by 10 percent. The first figure shows a shift by +10% for each color and the second figure -10%.

Similar to the brightness gradients but the following saturation gradients show a change of the HunterLab color 63.9457, 2.2387, 9.8664 by changing the saturation by 10% instead.

■ 63.9457, 2.2387,
9.8664

■ 63.9457, 2.2387,
9.8664

187.0483, -1.9769,
19.5766

■ 53.1366, 2.4876,
8.8530

■ 87.4760, 1.5822,
11.9256

■ 43.0150, 2.6804,
7.8439

■ 100.1299, 1.1867,
12.9734

■ 33.6328, 2.8077,
6.8346

113.3412, 0.7499,
14.0353

■ 25.0536, 2.8590,
5.8157

127.0873, 0.2743,
15.1121

■ 17.3613, 2.8194,
4.7710

141.3482, -0.2380,
16.2043

■ 10.6730, 2.6650,
3.8488

156.1059, -0.7850,

■ 1.0545, 26.1268,

17.3124

0.7381

171.3441, -1.3651,
18.4364

0.0000, NaN, NaN

0.0000, NaN, NaN

■ 63.9457, 2.2387,
9.8664

■ 63.9457, 2.2387,
9.8664

■ 59.8099, 6.1720,
13.0888

■ 68.2573, -1.4211,
6.4013

■ 55.8674, 10.4051,
16.0181

■ 72.7218, -4.8259,
2.7286

■ 52.1449, 14.9473,
18.5975

■ 77.3249, -8.0029,
-1.1199

■ 48.6715, 19.7936,
20.7584

■ 82.0532, -10.9765,
-5.1201

■ 45.4797, 24.9114,

■ 86.8953, -13.7694,

22.4248

-9.2525

■ 42.6047, 30.2276,
23.5204

■ 91.2777, -19.5703,
-5.5508

■ 40.0816, 35.6143,
23.9860

■ 94.6356, -24.5325,
-1.3881

■ 37.9401, 40.8722,
23.8337

■ 37.3570, 42.3965,
23.7614

Harmonies

Analogous

The Analogous color harmony consists of three colors that are next to each other on the color wheel.



63.9471, 5.1599, 6.5993



63.9457, 2.2387, 9.8664



63.9471, -2.1448, 11.3991

Triad

The Triadic color harmony groups three colors that are evenly spaced from another and form a triangle on the color wheel.



63.9471, 2.2367, 9.8674



63.9471, -12.0944, 4.6732



63.9471, -0.0161, -4.9923

Complementary

The Complementary color scheme is a pair of colors which are on the opposite of each other on the color wheel.



63.9457, 2.2387, 9.8664



65.6364, -8.2318, -3.1885

Split Complementary

Split-complementary colors differ from the complementary color scheme. The scheme consists of three colors, the original color and two neighbors of the complement color.



63.9471, -4.6763, -5.6006



63.9457, 2.2387, 9.8664



63.9471, -11.5616, 0.1969

Square

The Square scheme is like the rectangle color scheme, but the four colors are evenly spaced on the color wheel.



63.9471, 2.2367, 9.8674



63.9471, -10.3552, 8.5445



63.9471, -8.8780, -3.6410



63.9471, 3.8334, -2.0341

Rectangle

The Rectangle color scheme consists of four colors that form a rectangle on the color wheel.



63.9457, 2.2387, 9.8664



63.9471, -5.2667, 11.3123



63.9471, -8.8780, -3.6410



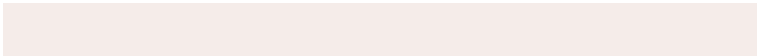
63.9471, -1.5430, -5.4865

Sweetspot

The Sweet Spot groups the original color and five complimentary colors.



63.9471, 2.2367, 9.8674



92.4382, -2.7697, 7.6765



61.8095, 10.8753, -2.8364



42.6739, -1.1322, 3.7170



97.7295, -5.2146, 5.3098



44.2712, -2.3622, 2.4053

Same Dimension

The Same Dimension uses a secret algorithm to generate beautiful new colors.



63.9471, 2.2367, 9.8674



83.6753, 4.7352, 14.7060



68.5242, -5.5002, 14.5278



31.6385, -0.2635, 3.4185



30.8407, 34.2137, 19.6029



7.0199, 4.4193, 4.4030

Inverse Universe

The Inverse Universe completely reimagines the original color for something new.



65.6364, -8.2318, -3.1885



86.3755, -12.0147, -6.1736



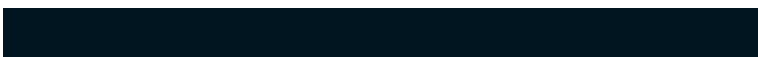
60.9749, -0.5610, -9.2514



32.0821, -3.0081, -0.0068



36.5244, -7.1570, -30.2025



7.9650, -2.4899, -4.5807

Previews

White Background



This preview shows how the HunterLab color 63.9457, 2.2387, 9.8664 looks on a white background.

Color Contrast Check

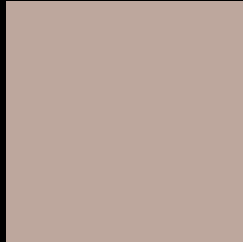
Large Text (above 18pt) WCAG AA × Fail

Any Text WCAG AA × Fail

Large Text (above 18pt) WCAG AAA × Fail

Any Text WCAG AAA × Fail

Black Background



This preview shows how the HunterLab color 63.9457, 2.2387, 9.8664 looks on a black background.

Color Contrast Check

Large Text (above 18pt) WCAG AA ✓ Pass

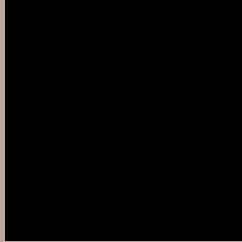
Any Text WCAG AA ✓ Pass

Large Text (above 18pt) WCAG AAA ✓ Pass

Any Text WCAG AAA ✓ Pass

If you want to check with other color combinations, try the [Color Contrast Checker](#).

HunterLab 63.9457, 2.2387, 9.8664 Background



This preview shows how black text looks on a background with the HunterLab color 63.9457, 2.2387, 9.8664.



This preview shows how white text looks on a background with the HunterLab color 63.9457, 2.2387,

9.8664.

Color Blindness Simulation

Color vision deficiency is a very complex topic, and I could not describe the different causes any better than Wikipedia does, so if you want to learn more, you should check out their [article about color blindness](#).

Dichromacy



Original Color

63.9457, 2.2387, 9.8664

Protanopia

64.0126, -3.4028, 9.0037

Deuteranopia

63.7825, 4.6146, 9.7317



Tritanopia

63.9779, 7.8689, 1.0135

Trichromacy



Original Color

63.9457, 2.2387, 9.8664

Protanomaly

64.0639, -1.7686, 9.5076

Deuteranomaly

63.9634, 3.7653, 9.9122

Tritanomaly

63.9444, 5.8887, 4.2433

Monochromacy



Original Color

63.9457, 2.2387, 9.8664

Achromatopsia

64.2295, -3.4271, 3.4897

Achromatomaly

64.0347, -1.3675, 5.5836

CSS Examples

Text

The CSS property to change the color of the text to HunterLab 63.9457, 2.2387, 9.8664 is called "color". The color property can be set on classes, ids or directly on the HTML element.

This example shows how text in the color `rgb(189, 167, 157)` looks like.

```
.text, #text, p{  
    color:rgb(189, 167, 157)  
}
```

If you want to add a text shadow in that color use the text-shadow property, you can generate a text shadow directly with our [CSS Text Shadow Generator](#).

Here you see how black text with a 4 pixel rgb(189, 167, 157) colored shadow looks like.

```
.shadow{ text-shadow: 4px 4px 2px rgb(189, 167, 157) }
```

Border

The CSS property to change the border of an element to HunterLab 63.9457, 2.2387, 9.8664 is called "border". The border property can be set on classes, ids or directly on the HTML element.

This example shows the color as border, it can be applied via the CSS property "border" or "border-color".

```
.border, #border, table{ border:4px solid rgb(189, 167, 157) }
```


If only the border color should be changed use the property `border-color`.

```
.border{ border-color:rgb(189, 167, 157) }
```

If you want to add a box shadow in that color use:

Here you see how a box with a 4 pixel `rgb(189, 167, 157)` colored shadow looks like.

```
.boxshadow{ -moz-box-shadow:4px 4px 4px  
4px rgb(189, 167, 157); -webkit-box-  
shadow:4px 4px 4px 4px rgb(189, 167, 157);  
box-shadow:4px 4px 4px 4px rgb(189, 167,  
157) }
```

Background

The CSS property to change the background color of an element to HunterLab 63.9457, 2.2387, 9.8664 is called "background". The background property can be set on classes, ids or directly on the HTML element.

```
.background, #background, body{  
background: rgb(189, 167, 157) }
```

If only the background color should be changed can be used:

```
.background{ background-color: rgb(189,  
167, 157) }
```

This example shows the color as background, it is applied via the CSS property "background".

To optimize and compress your CSS code, you can use our [online CSS compressor and optimizer](#) based on csstidy. If you want to create a linear or radial gradient as background or border, check our [CSS Gradient Generator](#).

Hey! You found this booklet interesting? Support Converting Colors with the new Membership Option!

The pro membership hides all ads, plus gives you double the colors in the color bucket, and more awesome pro features!

[Learn more, Memberships starting at \\$2.50/m!](#)

**Follow me
on Twitter!**

@ConvertingColor