

Converting Colors

HunterLab(64.1252, 2.1901,
15.1559)

Have a look what the booklet for
HunterLab(64.1252, 2.1901,
15.1559) contains.

HunterLab(64.1252, 2.1901, 15.1559)	3
<i>Conversions</i>	4
<i>Details</i>	6
<i>Harmonies</i>	12
<i>Previews</i>	24
<i>Color Blindness Simulation</i>	28
<i>CSS Examples</i>	31

Color

**HunterLab(64.1252, 2.1901,
15.1559)**

Conversions

Conversions Part 1

Format	Color
Hex	C2A790
RGB	194, 167, 144
RGB Percent	76%, 65%, 56%
CMY	0.2392, 0.3451, 0.4353
CMYK	0.00, 0.14, 0.26, 0.24
HSL	28°, 29%, 66%
HSV	28°, 26%, 76%
XYZ	41.1009, 41.1204, 32.1564
YIQ	172.4510, 23.4750, -1.4290

Conversions

Conversions Part 2

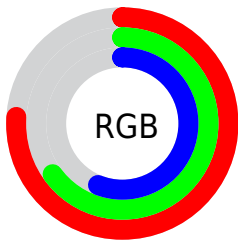
Format	Color
RYB	194, 187, 144
Decimal	12756880
CIELab	70.26, 6.29, 15.54
CIElCh	70, 16.761, 67.969
Yxy	41.1223, 0.3593, 0.3595
Android (android.graphics.Color)	4290946960 (0xFFC2A790)
YUV	172.4510, -14.0263, 18.8985
Hunter-Lab	64.1252, 2.1901, 15.1559

Details

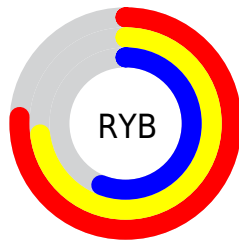
The HunterLab color $64.1252, 2.1901, 15.1559$ is a light color, and the websafe version is hex $CC9999$. A complement of this color would be $62.4092, -6.8174, -10.1512$, and the grayscale version is $64.4670, -3.4398, 3.5026$.

A 20% lighter version of the original color is $87.6522, 1.5791, 17.8998$, and $43.1799, 2.8394, 12.1164$ is the 20% darker color. If you saturate the color by 10%, you get $60.7415, 5.0849, 18.7092$, and if you desaturate by 10%, it is $67.6477, -0.4030, 11.1422$.

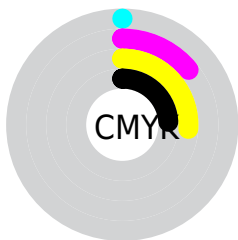
Distribution



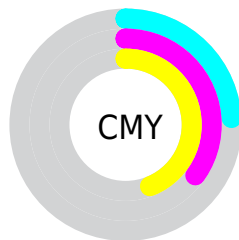
- Red (76%)
- Green (65%)
- Blue (56%)



- Red (76%)
- Yellow (73%)
- Blue (56%)



- Cyan (0%)
- Magenta (14%)
- Yellow (26%)
- Black (24%)



- Cyan (24%)
- Magenta (35%)
- Yellow (44%)

Brightness & Saturation Gradients

These gradients show how the HunterLab color 64.1252, 2.1901, 15.1559 changes by changing the brightness by 10 percent. The first figure shows a shift by +10% for each color and the second figure -10%.

Similar to the brightness gradients but the following saturation gradients show a change of the HunterLab color 64.1252, 2.1901, 15.1559 by changing the saturation by 10% instead.

■ 64.1252, 2.1901,
15.1559

■ 64.1252, 2.1901,
15.1559

187.3050, -2.0493,
27.8098

■ 53.3054, 2.4422,
13.7160

■ 87.6753, 1.5273,
17.9859

■ 43.1723, 2.6386,
12.2449

■ 100.3384, 1.1290,
19.3869

■ 33.7777, 2.7697,
10.7281

113.5585, 0.6895,
20.7846

■ 25.1850, 2.8254,
9.1417

127.3130, 0.2113,
22.1821

■ 17.4776, 2.7908,
7.4461

141.5820, -0.3034,
23.5817

■ 10.7719, 2.6422,
6.7111

156.3475, -0.8528,

■ 1.7015, 16.0107,

24.9852

1.1911

171.5934, -1.4352,
26.3942

0.0000, NaN, NaN

0.0000, NaN, NaN

■ 64.1252, 2.1901,
15.1559

■ 64.1252, 2.1901,
15.1559

■ 60.7415, 5.0849,
18.7092

■ 67.6477, -0.4030,
11.1422

■ 57.5052, 8.3059,
21.7444

■ 71.2929, -2.7090,
6.7156

■ 54.4323, 11.8628,
24.2044

■ 75.0516, -4.7522,
1.9220

■ 51.5382, 15.7574,
26.0323

■ 78.9147, -6.5547,
-3.1994

■ 48.8390, 19.9756,

■ 82.8737, -8.1376,

27.1791

-8.6141

■ 46.3506, 24.4804,
27.6161

■ 86.7182, -10.6465,
-11.4351

■ 44.0870, 29.2012,
27.3607

■ 90.1120, -15.9563,
-7.0007

■ 43.1935, 31.2049,
27.1619

■ 93.5731, -21.1920,
-2.6573

■ 94.9786, -23.2710,
-0.9405

Harmonies

Analogous

The Analogous color harmony consists of three colors that are next to each other on the color wheel.



64.1267, 8.5913, 11.5184



64.1252, 2.1901, 15.1559



64.1267, -5.4521, 15.8624

Triad

The Triadic color harmony groups three colors that are evenly spaced from another and form a triangle on the color wheel.



64.1267, 2.1879, 15.1568



64.1267, -17.3556, 1.5197



64.1267, 5.8805, -8.5528

Complementary

The Complementary color scheme is a pair of colors which are on the opposite of each other on the color wheel.



64.1252, 2.1901, 15.1559



62.4092, -6.8174, -10.1512

Split Complementary

Split-complementary colors differ from the complementary color scheme. The scheme consists of three colors, the original color and two neighbors of the complement color.



64.1267, -1.3725, -11.9754



64.1252, 2.1901, 15.1559



64.1267, -14.6170, -5.7314

Square

The Square scheme is like the rectangle color scheme, but the four colors are evenly spaced on the color wheel.



64.1267, 2.1879, 15.1568



64.1267, -16.5021, 8.5220



64.1267, -8.8514, -10.8865



64.1267, 10.7919, -1.9847

Rectangle

The Rectangle color scheme consists of four colors that form a rectangle on the color wheel.



64.1252, 2.1901, 15.1559



64.1267, -10.1807, 14.6627



64.1267, -8.8514, -10.8865



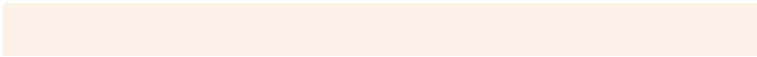
64.1267, 3.6223, -10.1424

Sweetspot

The Sweet Spot groups the original color and five complimentary colors.



64.1267, 2.1879, 15.1568



94.7916, -2.9485, 10.4887



58.6309, 18.0187, -2.7713



44.0047, -1.1621, 5.3430

0.0000, NaN, NaN



46.2646, -2.4686, 2.5136

Same Dimension

The Same Dimension uses a secret algorithm to generate beautiful new colors.



64.1267, 2.1879, 15.1568



83.6858, 5.1230, 23.2166



71.3886, -9.8553, 21.9024



32.9004, -0.8988, 3.9269



35.2513, 24.7486, 22.1550



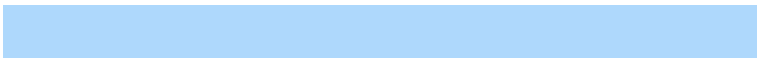
8.2135, 3.1518, 5.1163

Inverse Universe

The Inverse Universe completely reimagines the original color for something new.



62.4092, -6.8174, -10.1512



80.8809, -9.5439, -18.1140



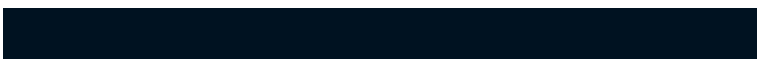
55.2605, 5.3537, -20.6158



32.6016, -2.4724, -0.4772



30.5531, 3.7234, -46.2265



7.3483, -0.9256, -7.1867

Previews

White Background



This preview shows how the HunterLab color 64.1252, 2.1901, 15.1559 looks on a white background.

Color Contrast Check

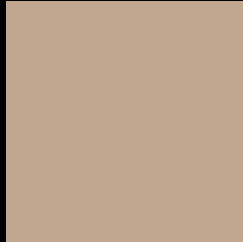
Large Text (above 18pt) WCAG AA × Fail

Any Text WCAG AA × Fail

Large Text (above 18pt) WCAG AAA × Fail

Any Text WCAG AAA × Fail

Black Background



This preview shows how the HunterLab color 64.1252, 2.1901, 15.1559 looks on a black background.

Color Contrast Check

Large Text (above 18pt) WCAG AA ✓ Pass

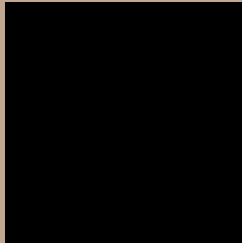
Any Text WCAG AA ✓ Pass

Large Text (above 18pt) WCAG AAA ✓ Pass

Any Text WCAG AAA ✓ Pass

If you want to check with other color combinations, try the [Color Contrast Checker](#).

HunterLab 64.1252, 2.1901, 15.1559 Background



This preview shows how black text looks on a background with the HunterLab color 64.1252, 2.1901, 15.1559.



This preview shows how white text looks on a background with the HunterLab color 64.1252, 2.1901,

Color Blindness Simulation

Color vision deficiency is a very complex topic, and I could not describe the different causes any better than Wikipedia does, so if you want to learn more, you should check out their [article about color blindness](#).

Dichromacy



Original Color

64.1252, 2.1901, 15.1559

Protanopia

64.0507, -3.9384, 14.2259

Deuteranopia

63.9763, 4.6058, 15.0497



Tritanopia

64.2614, 10.1058, 2.3547

Trichromacy



Original Color

64.1252, 2.1901, 15.1559

Protanomaly

64.2128, -1.9157, 14.7997

Deuteranomaly

64.1532, 3.7474, 15.2112

Tritanomaly

64.1105, 7.5359, 7.1554

Monochromacy



Original Color

64.1252, 2.1901, 15.1559

Achromatopsia

64.2295, -3.4271, 3.4897

Achromatomaly

64.0792, -1.4974, 7.8314

CSS Examples

Text

The CSS property to change the color of the text to HunterLab 64.1252, 2.1901, 15.1559 is called "color". The color property can be set on classes, ids or directly on the HTML element.

This example shows how text in the color `rgb(194, 167, 144)` looks like.

```
.text, #text, p{  
    color:rgb(194, 167, 144)  
}
```

If you want to add a text shadow in that color use the text-shadow property, you can generate a text shadow directly with our [CSS Text Shadow Generator](#).

Here you see how black text with a 4 pixel rgb(194, 167, 144) colored shadow looks like.

```
.shadow{ text-shadow: 4px 4px 2px rgb(194, 167, 144) }
```

Border

The CSS property to change the border of an element to HunterLab 64.1252, 2.1901, 15.1559 is called "border". The border property can be set on classes, ids or directly on the HTML element.

This example shows the color as border, it can be applied via the CSS property "border" or "border-color".

```
.border, #border, table{ border:4px solid rgb(194, 167, 144) }
```


If only the border color should be changed use the property `border-color`.

```
.border{ border-color:rgb(194, 167, 144) }
```

If you want to add a box shadow in that color use:

Here you see how a box with a 4 pixel `rgb(194, 167, 144)` colored shadow looks like.

```
.boxshadow{ -moz-box-shadow:4px 4px 4px  
4px rgb(194, 167, 144); -webkit-box-  
shadow:4px 4px 4px 4px rgb(194, 167, 144);  
box-shadow:4px 4px 4px 4px rgb(194, 167,  
144) }
```

Background

The CSS property to change the background color of an element to HunterLab 64.1252, 2.1901, 15.1559 is called "background". The background property can be set on classes, ids or directly on the HTML element.

```
.background, #background, body{  
background: rgb(194, 167, 144) }
```

If only the background color should be changed can be used:

```
.background{ background-color: rgb(194,  
167, 144) }
```

This example shows the color as background, it is applied via the CSS property "background".

To optimize and compress your CSS code, you can use our [online CSS compressor and optimizer](#) based on csstidy. If you want to create a linear or radial gradient as background or border, check our [CSS Gradient Generator](#).

Hey! You found this booklet interesting? Support Converting Colors with the new Membership Option!

The pro membership hides all ads, plus gives you double the colors in the color bucket, and more awesome pro features!

[Learn more, Memberships starting at \\$2.50/m!](#)

**Follow me
on Twitter!**

@ConvertingColor