

Converting Colors

HunterLab(64.1294, 20.1656,
8.1873)

Have a look what the booklet for
HunterLab(64.1294, 20.1656,
8.1873) contains.

HunterLab(64.1182, 19.9080, 8.2494)	3
<i>Conversions</i>	4
<i>Details</i>	6
<i>Harmonies</i>	12
<i>Previews</i>	24
<i>Color Blindness Simulation</i>	28
<i>CSS Examples</i>	31

Color

**HunterLab(64.1182, 19.9080,
8.2494)**

Conversions

Conversions Part 1

Format	Color
Hex	DB9BA2
RGB	219, 155, 162
RGB Percent	86%, 61%, 64%
CMY	0.1412, 0.3921, 0.3647
CMYK	0.00, 0.29, 0.26, 0.14
HSL	353°, 47%, 73%
HSV	353°, 29%, 86%
XYZ	47.4564, 41.1114, 39.6165
YIQ	174.9340, 35.8970, 15.7450

Conversions

Conversions Part 2

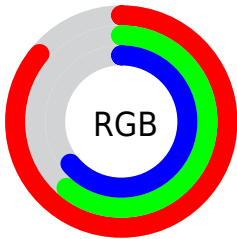
Format	Color
RYB	219, 155, 162
Decimal	14392226
CIELab	70.26, 24.88, 5.93
CIELCh	70, 25.575, 13.418
Yxy	41.1134, 0.3702, 0.3207
Android (android.graphics.Color)	4292582306 (0xFFDB9BA2)
YUV	174.9340, -6.3765, 38.6459
Hunter-Lab	64.1182, 19.9080, 8.2494

Details

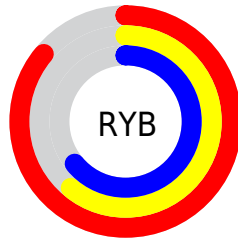
The HunterLab color **64.1182, 19.9080, 8.2494** is a light color, and the websafe version is hex **CC9999**. A complement of this color would be **78.9849, -23.5671, 1.4991**, and the grayscale version is **65.4635, -3.4930, 3.5568**.

A 20% lighter version of the original color is **85.0664, 12.3109, 6.8790**, and **43.1426, 18.7059, 6.6385** is the 20% darker color. If you saturate the color by 10%, you get **58.1653, 28.7447, 10.0593**, and if you desaturate by 10%, it is **70.5863, 11.2847, 6.7429**.

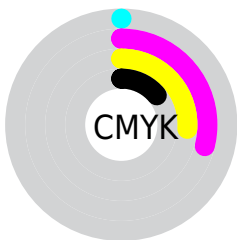
Distribution



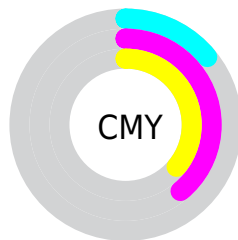
- Red (86%)
- Green (61%)
- Blue (64%)



- Red (86%)
- Yellow (61%)
- Blue (64%)



- Cyan (0%)
- Magenta (29%)
- Yellow (26%)
- Black (14%)



- Cyan (14%)
- Magenta (39%)
- Yellow (36%)

Brightness & Saturation Gradients

These gradients show how the HunterLab color 64.1182, 19.9080, 8.2494 changes by changing the brightness by 10 percent. The first figure shows a shift by +10% for each color and the second figure -10%.

Similar to the brightness gradients but the following saturation gradients show a change of the HunterLab color 64.1182, 19.9080, 8.2494 by changing the saturation by 10% instead.

64.1182, 19.9080,
8.2494

64.1182, 19.9080,
8.2494

187.2950, 22.2444,
17.1413

53.2989, 19.2780,
7.3534

87.6675, 20.8940,
10.0958

43.1662, 18.5480,
6.4710

100.3303, 21.2716,
11.0456

33.7721, 17.7020,
5.6004

113.5500, 21.5800,
12.0142

25.1800, 16.7241,
4.7361

127.3043, 21.8246,
13.0018

17.4731, 15.5970,
3.8685

141.5730, 22.0097,
14.0083

10.7681, 14.3147,
3.0157

156.3382, 22.1392,

1.6811, 64.3917,

15.0338

1.1768

171.5838, 22.2164,
16.0782

0.0000, NaN, NaN

0.0000, NaN, NaN

■ 64.1182, 19.9080,
8.2494

■ 64.1182, 19.9080,
8.2494

■ 58.1653, 28.7447,
10.0593

■ 70.5863, 11.2847,
6.7429

■ 52.8240, 37.6381,
12.1801

■ 77.4824, 2.9450,
5.5056

■ 48.2129, 46.2600,
14.5815

■ 84.7423, -5.1080,
4.5023

■ 44.4551, 54.0826,
17.1597

■ 92.3138, -12.8957,
3.6977

■ 41.6548, 60.4180,

■ 96.8505, -16.4720,

19.7208

1.4734

■ 39.8578, 64.6242,
22.0038

■ 38.9478, 66.6404,
23.7262

■ 38.8919, 66.7726,
23.8216

Harmonies

Analogous

The Analogous color harmony consists of three colors that are next to each other on the color wheel.



64.1197, 19.5405, -2.9084



64.1182, 19.9080, 8.2494



64.1197, 13.7099, 16.5014

Triad

The Triadic color harmony groups three colors that are evenly spaced from another and form a triangle on the color wheel.



64.1197, 19.9054, 8.2505



64.1197, -18.1363, 17.1450



64.1197, -9.7066, -20.5356

Complementary

The Complementary color scheme is a pair of colors which are on the opposite of each other on the color wheel.



64.1182, 19.9080, 8.2494



78.9849, -23.5671, 1.4991

Split Complementary

Split-complementary colors differ from the complementary color scheme. The scheme consists of three colors, the original color and two neighbors of the complement color.



64.1197, -18.9298, -12.9907



64.1182, 19.9080, 8.2494



64.1197, -23.5530, 9.2906

Square

The Square scheme is like the rectangle color scheme, but the four colors are evenly spaced on the color wheel.



64.1197, 19.9054, 8.2505



64.1197, -8.5513, 20.9816



64.1197, -23.8326, -1.6656



64.1197, 1.8682, -20.9506

Rectangle

The Rectangle color scheme consists of four colors that form a rectangle on the color wheel.



64.1182, 19.9080, 8.2494



64.1197, 6.9333, 19.8016



64.1197, -23.8326, -1.6656



64.1197, -13.1643, -18.6953

Sweetspot

The Sweet Spot groups the original color and five complimentary colors.



64.1197, 19.9054, 8.2505



92.1814, 3.3587, 6.5224



65.1820, 27.0341, -20.3220



42.0773, 2.2162, 3.1085

0.0000, NaN, NaN



46.2646, -2.4686, 2.5136

Same Dimension

The Same Dimension uses a secret algorithm to generate beautiful new colors.



64.1197, 19.9054, 8.2505



71.8030, 30.0124, 11.0648



70.6277, 6.2013, 17.5946



36.1587, 1.4584, 2.5854



29.9613, 51.4660, 18.1478



7.6780, 13.2920, 3.8512

Inverse Universe

The Inverse Universe completely reimagines the original color for something new.



64.1197, 19.9054, 8.2505



71.8030, 30.0124, 11.0648



71.3276, -10.4544, -11.9391



36.1587, 1.4584, 2.5854



29.9613, 51.4660, 18.1478



7.6780, 13.2920, 3.8512

Previews

White Background



This preview shows how the HunterLab color 64.1182, 19.9080, 8.2494 looks on a white background.

Color Contrast Check

Large Text (above 18pt) WCAG AA × Fail

Any Text WCAG AA × Fail

Large Text (above 18pt) WCAG AAA × Fail

Any Text WCAG AAA × Fail

Black Background



This preview shows how the HunterLab color 64.1182, 19.9080, 8.2494 looks on a black background.

Color Contrast Check

Large Text (above 18pt) WCAG AA ✓ Pass

Any Text WCAG AA ✓ Pass

Large Text (above 18pt) WCAG AAA ✓ Pass

Any Text WCAG AAA ✓ Pass

If you want to check with other color combinations, try the [Color Contrast Checker](#).

HunterLab 64.1182, 19.9080, 8.2494 Background



This preview shows how black text looks on a background with the HunterLab color 64.1182, 19.9080, 8.2494.



This preview shows how white text looks on a background with the HunterLab color 64.1182, 19.9080,

8.2494.

Color Blindness Simulation

Color vision deficiency is a very complex topic, and I could not describe the different causes any better than Wikipedia does, so if you want to learn more, you should check out their [article about color blindness](#).

Dichromacy



Original Color

64.1182, 19.9080, 8.2494

Protanopia

64.1717, -2.1691, 3.9072

Deuteranopia

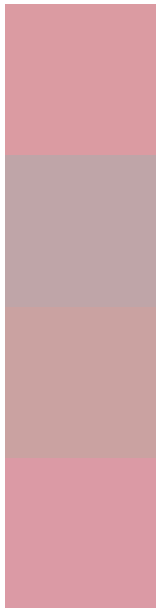
64.1467, 4.5429, 8.8667



Tritanopia

63.9722, 21.0106, 6.3513

Trichromacy



Original Color

64.1182, 19.9080, 8.2494

Protanomaly

63.8857, 5.5751, 5.0828

Deuteranomaly

64.0081, 9.8815, 8.3817

Tritanomaly

63.9436, 20.8649, 6.7604

Monochromacy



Original Color

64.1182, 19.9080, 8.2494

Achromatopsia

65.4745, -3.4936, 3.5574

Achromatomaly

64.7950, 4.3623, 5.2036

CSS Examples

Text

The CSS property to change the color of the text to HunterLab 64.1182, 19.9080, 8.2494 is called "color". The color property can be set on classes, ids or directly on the HTML element.

This example shows how text in the color `rgb(219, 155, 162)` looks like.

```
.text, #text, p{  
    color:rgb(219, 155, 162)  
}
```

If you want to add a text shadow in that color use the text-shadow property, you can generate a text shadow directly with our [CSS Text Shadow Generator](#).

Here you see how black text with a 4 pixel rgb(219, 155, 162) colored shadow looks like.

```
.shadow{ text-shadow: 4px 4px 2px rgb(219, 155, 162) }
```

Border

The CSS property to change the border of an element to HunterLab 64.1182, 19.9080, 8.2494 is called "border". The border property can be set on classes, ids or directly on the HTML element.

This example shows the color as border, it can be applied via the CSS property "border" or "border-color".

```
.border, #border, table{ border:4px solid rgb(219, 155, 162) }
```


If only the border color should be changed use the property `border-color`.

```
.border{ border-color:rgb(219, 155, 162) }
```

If you want to add a box shadow in that color use:

Here you see how a box with a 4 pixel `rgb(219, 155, 162)` colored shadow looks like.

```
.boxshadow{ -moz-box-shadow:4px 4px 4px  
4px rgb(219, 155, 162); -webkit-box-  
shadow:4px 4px 4px 4px rgb(219, 155, 162);  
box-shadow:4px 4px 4px 4px rgb(219, 155,  
162) }
```

Background

The CSS property to change the background color of an element to HunterLab 64.1182, 19.9080, 8.2494 is called "background". The background property can be set on classes, ids or directly on the HTML element.

```
.background, #background, body{  
background: rgb(219, 155, 162) }
```

If only the background color should be changed can be used:

```
.background{ background-color: rgb(219,  
155, 162) }
```

This example shows the color as background, it is applied via the CSS property "background".

To optimize and compress your CSS code, you can use our [online CSS compressor and optimizer](#) based on csstidy. If you want to create a linear or radial gradient as background or border, check our [CSS Gradient Generator](#).

Hey! You found this booklet interesting? Support Converting Colors with the new Membership Option!

The pro membership hides all ads, plus gives you double the colors in the color bucket, and more awesome pro features!

[Learn more, Memberships starting at \\$2.50/m!](#)

**Follow me
on Twitter!**

@ConvertingColor