

# Converting Colors

HunterLab(64.1307, -0.3158,  
9.5498)

Have a look what the booklet for  
HunterLab(64.1307, -0.3158, 9.5498)  
contains.

<b>HunterLab(64.0585, -0.2887, 9.5277)</b> .....	3
<b><i>Conversions</i></b> .....	4
<b><i>Details</i></b> .....	6
<b><i>Harmonies</i></b> .....	12
<b><i>Previews</i></b> .....	24
<b><i>Color Blindness Simulation</i></b> .....	28
<b><i>CSS Examples</i></b> .....	31

# Color

**HunterLab(64.0585, -0.2887,  
9.5277)**

# Conversions

## Conversions Part 1

Format	Color
Hex	B8A99E
RGB	184, 169, 158
RGB Percent	72%, 66%, 62%
CMY	0.2784, 0.3372, 0.3804
CMYK	0.00, 0.08, 0.14, 0.28
HSL	25°, 15%, 67%
HSV	25°, 14%, 72%
XYZ	40.1267, 41.0349, 38.1534
YIQ	172.2310, 12.4710, -0.2410

# Conversions

## Conversions Part 2

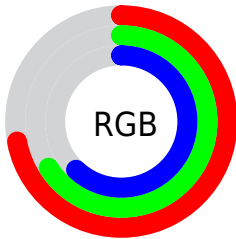
<b>Format</b>	<b>Color</b>
<b>RYB</b>	184, 177, 158
Decimal	12102046
CIELab	70.20, 3.53, 7.62
CIELCh	70, 8.401, 65.123
Yxy	41.0367, 0.3363, 0.3439
Android (android.graphics.Color)	4290292126 (0xFFB8A99E)
YUV	172.2310, -7.0159, 10.3214
Hunter-Lab	64.0585, -0.2887, 9.5277

# Details

The HunterLab color  $64.0585, -0.2887, 9.5277$  is a light color, and the websafe version is hex  $999999$ . A complement of this color would be  $63.7308, -5.9491, -3.0215$ , and the grayscale version is  $64.3509, -3.4336, 3.4963$ .

A 20% lighter version of the original color is  $87.5447, -1.0946, 11.2917$ , and  $43.1386, 0.5407, 7.4734$  is the 20% darker color. If you saturate the color by 10%, you get  $60.5472, 2.4307, 13.2064$ , and if you desaturate by 10%, it is  $67.6973, -2.7498, 5.5107$ .

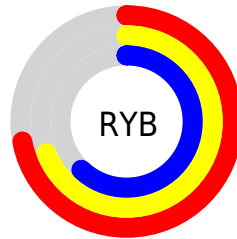
# Distribution



Red (72%)

Green (66%)

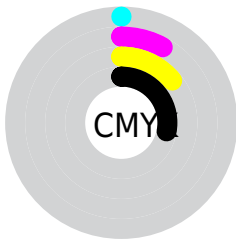
Blue (62%)



Red (72%)

Yellow (69%)

Blue (62%)

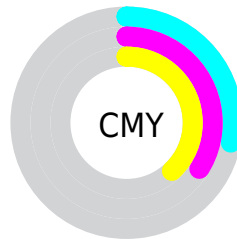


Cyan (0%)

Magenta (8%)

Yellow (14%)

Black (28%)



Cyan (28%)

Magenta (34%)

Yellow (38%)

# Brightness & Saturation Gradients

These gradients show how the HunterLab color 64.0585, -0.2887, 9.5277 changes by changing the brightness by 10 percent. The first figure shows a shift by +10% for each color and the second figure -10%.

Similar to the brightness gradients but the following saturation gradients show a change of the HunterLab color 64.0585, -0.2887, 9.5277 by changing the saturation by 10% instead.



■ 64.0585, -0.2887,  
9.5277

■ 64.0585, -0.2887,  
9.5277

187.2095, -5.5443,  
19.0604

■ 53.2426, 0.1037,  
8.5398

■ 87.6012, -1.2098,  
11.5405

■ 43.1138, 0.4489,  
7.5585

■ 100.2609, -1.7287,  
12.5671

■ 33.7238, 0.7397,  
6.5795

113.4777, -2.2840,  
13.6087

■ 25.1362, 0.9685,  
5.5947

127.2291, -2.8735,  
14.6662

■ 17.4343, 1.1245,  
4.5892

141.4951, -3.4957,  
15.7399

■ 10.7351, 1.1905,  
3.6659

156.2577, -4.1491,

■ 1.4941, 10.2275,

16.8300

1.0459

171.5007, -4.8324,  
17.9369

0.0000, NaN, NaN

0.0000, NaN, NaN

■ 64.0585, -0.2887,  
9.5277

■ 64.0585, -0.2887,  
9.5277

■ 60.5472, 2.4307,  
13.2064

■ 67.6973, -2.7498,  
5.5107

■ 57.1719, 5.4348,  
16.4978

■ 71.4482, -4.9687,  
1.1926

■ 53.9483, 8.7392,  
19.3506

■ 75.3028, -6.9688,  
-3.3910

■ 50.8923, 12.3552,  
21.7082

■ 79.2525, -8.7704,  
-8.2108

■ 48.0216, 16.2832,

■ 83.2899, -10.3924,

23.5118

-13.2417

■ 45.3546, 20.5067,  
24.7070

■ 86.8956, -14.7112,  
-11.2649

■ 42.9105, 24.9839,  
25.2545

■ 90.3817, -20.0070,  
-6.7198

■ 40.7069, 29.6392,  
25.1499

■ 93.9339, -25.2273,  
-2.2754

■ 39.5233, 32.3727,  
24.9208

■ 94.3029, -25.7603,  
-1.8236

# Harmonies

## Analogous

The Analogous color harmony consists of three colors that are next to each other on the color wheel.



64.0599, 2.7207, 7.3921



64.0585, -0.2887, 9.5277



64.0599, -4.0785, 10.0862

# Triad

The Triadic color harmony groups three colors that are evenly spaced from another and form a triangle on the color wheel.



64.0599, -0.2905, 9.5287



64.0599, -10.6003, 2.8576



64.0599, 0.8755, -2.5185

# Complementary

The Complementary color scheme is a pair of colors which are on the opposite of each other on the color wheel.



64.0585, -0.2887, 9.5277



63.7308, -5.9491, -3.0215

# Split Complementary

Split-complementary colors differ from the complementary color scheme. The scheme consists of three colors, the original color and two neighbors of the complement color.



64.0599, -2.7619, -3.8988



64.0585, -0.2887, 9.5277



64.0599, -9.3407, -0.6806

# Square

The Square scheme is like the rectangle color scheme, but the four colors are evenly spaced on the color wheel.



64.0599, -0.2905, 9.5287



64.0599, -9.9736, 6.3676



64.0599, -6.4935, -3.2073



64.0599, 3.4050, 0.4660



# Rectangle

The Rectangle color scheme consists of four colors that form a rectangle on the color wheel.



64.0585, -0.2887, 9.5277



64.0599, -6.5216, 9.5172



64.0599, -6.4935, -3.2073



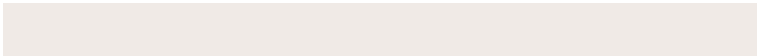
64.0599, -0.2613, -3.1933

# Sweetspot

The Sweet Spot groups the original color and five complimentary colors.



64.0599, -0.2905, 9.5287



91.1782, -3.7221, 7.3840



61.3744, 7.6312, -0.3224



42.1613, -1.6183, 3.6238



96.5975, -5.1542, 5.2483



43.2801, -2.3093, 2.3515



# Same Dimension

The Same Dimension uses a secret algorithm to generate beautiful new colors.



64.0599, -0.2905, 9.5287



84.7387, 0.7251, 14.4435



67.8580, -6.6057, 13.4342



31.0165, -0.7076, 3.6030



33.0148, 26.3610, 20.8051



7.1233, 2.8244, 4.4388



# Inverse Universe

The Inverse Universe completely reimagines the original color for something new.



63.7308, -5.9491, -3.0215



84.1981, -8.5588, -6.1536



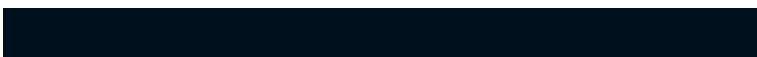
59.9415, 0.3789, -7.9126



30.9135, -2.4798, -0.3263



31.0647, 0.7717, -40.4941

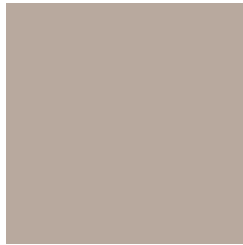


6.7822, -1.3900, -5.4766



# Previews

## White Background



This preview shows how the HunterLab color 64.0585, -0.2887, 9.5277 looks on a white background.

## Color Contrast Check

Large Text (above 18pt) WCAG AA × Fail

Any Text WCAG AA × Fail

Large Text (above 18pt) WCAG AAA × Fail

Any Text WCAG AAA × Fail



# Black Background



This preview shows how the HunterLab color 64.0585, -0.2887, 9.5277 looks on a black background.

## Color Contrast Check

Large Text (above 18pt) WCAG AA ✓ Pass

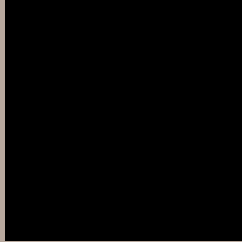
Any Text WCAG AA ✓ Pass

Large Text (above 18pt) WCAG AAA ✓ Pass

Any Text WCAG AAA ✓ Pass

If you want to check with other color combinations, try the [Color Contrast Checker](#).

## HunterLab 64.0585, -0.2887, 9.5277 Background



This preview shows how black text looks on a background with the HunterLab color 64.0585, -0.2887, 9.5277.



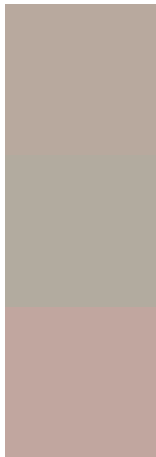
This preview shows how white text looks on a background with the HunterLab color 64.0585, -0.2887, 9.5277.

9.5277.

# Color Blindness Simulation

Color vision deficiency is a very complex topic, and I could not describe the different causes any better than Wikipedia does, so if you want to learn more, you should check out their [article about color blindness](#).

## Dichromacy



### Original Color

64.0585, -0.2887, 9.5277

### Protanopia

64.1046, -3.0831, 9.1096

### Deuteranopia

64.1195, 4.3974, 9.2568



## Tritanopia

64.1030, 5.5141, 0.1507

# Trichromacy



## Original Color

64.0585, -0.2887, 9.5277

## Protanomaly

63.9968, -1.9462, 9.0120

## Deuteranomaly

64.0998, 2.8677, 9.2085

## Tritanomaly

64.0444, 3.3628, 3.8548

# Monochromacy



## Original Color

64.0585, -0.2887, 9.5277

## Achromatopsia

64.2295, -3.4271, 3.4897

## Achromatomaly

64.1451, -2.4953, 5.6902

# CSS Examples

## Text

The CSS property to change the color of the text to HunterLab 64.0585, -0.2887, 9.5277 is called "color". The color property can be set on classes, ids or directly on the HTML element.

This example shows how text in the color `rgb(184, 169, 158)` looks like.

```
.text, #text, p{  
    color:rgb(184, 169, 158)  
}
```

If you want to add a text shadow in that color use the text-shadow property, you can generate a text shadow directly with our [CSS Text Shadow Generator](#).

Here you see how black text with a 4 pixel rgb(184, 169, 158) colored shadow looks like.

```
.shadow{ text-shadow: 4px 4px 2px rgb(184, 169, 158) }
```

## Border

The CSS property to change the border of an element to HunterLab 64.0585, -0.2887, 9.5277 is called "border". The border property can be set on classes, ids or directly on the HTML element.

This example shows the color as border, it can be applied via the CSS property "border" or "border-color".

```
.border, #border, table{ border:4px solid rgb(184, 169, 158) }
```



If only the border color should be changed use the property `border-color`.

```
.border{ border-color:rgb(184, 169, 158) }
```

If you want to add a box shadow in that color use:

Here you see how a box with a 4 pixel `rgb(184, 169, 158)` colored shadow looks like.

```
.boxshadow{ -moz-box-shadow:4px 4px 4px  
4px rgb(184, 169, 158); -webkit-box-  
shadow:4px 4px 4px 4px rgb(184, 169, 158);  
box-shadow:4px 4px 4px 4px rgb(184, 169,  
158) }
```

# Background

The CSS property to change the background color of an element to HunterLab 64.0585, -0.2887, 9.5277 is called "background". The background property can be set on classes, ids or directly on the HTML element.

```
.background, #background, body{  
background: rgb(184, 169, 158) }
```

If only the background color should be changed can be used:

```
.background{ background-color: rgb(184,  
169, 158) }
```

This example shows the color as background, it is applied via the CSS property "background".

To optimize and compress your CSS code, you can use our [online CSS compressor and optimizer](#) based on csstidy. If you want to create a linear or radial gradient as background or border, check our [CSS Gradient Generator](#).

Hey! You found this booklet interesting? Support Converting Colors with the new Membership Option!

The pro membership hides all ads, plus gives you double the colors in the color bucket, and more awesome pro features!

**[Learn more, Memberships starting at \\$2.50/m!](#)**

**Follow me  
on Twitter!**

@ConvertingColor