

Converting Colors

HunterLab(64.1537, 0.9094,
14.4147)

Have a look what the booklet for
HunterLab(64.1537, 0.9094,
14.4147) contains.

HunterLab(64.1537, 0.9094, 14.4147)	3
<i>Conversions</i>	4
<i>Details</i>	6
<i>Harmonies</i>	12
<i>Previews</i>	24
<i>Color Blindness Simulation</i>	28
<i>CSS Examples</i>	31

Color

**HunterLab(64.1537, 0.9094,
14.4147)**

Conversions

Conversions Part 1

Format	Color
Hex	BFA892
RGB	191, 168, 146
RGB Percent	75%, 66%, 57%
CMY	0.2510, 0.3412, 0.4274
CMYK	0.00, 0.12, 0.24, 0.25
HSL	29°, 26%, 66%
HSV	29°, 24%, 75%
XYZ	40.6768, 41.1570, 32.9943
YIQ	172.3690, 20.7700, -1.9660

Conversions

Conversions Part 2

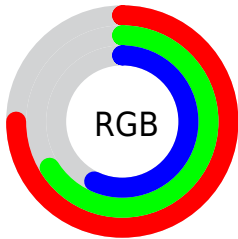
Format	Color
R_{YB}	191, 189, 146
Decimal	12560530
CIE _{Lab}	70.29, 4.87, 14.43
CIE _{LCh}	70, 15.235, 71.348
Yxy	41.1588, 0.3542, 0.3584
Android (android.graphics.Color)	4290750610 (0xFFBFA892)
YUV	172.3690, -12.9999, 16.3394
Hunter-Lab	64.1537, 0.9094, 14.4147

Details

The HunterLab color $64.1537, 0.9094, 14.4147$ is a light color, and the websafe version is hex $CC9999$. A complement of this color would be $61.8446, -5.9222, -9.2498$, and the grayscale version is $64.4297, -3.4378, 3.5006$.

A 20% lighter version of the original color is $87.6938, 0.2653, 17.0964$, and $43.1687, 1.4783, 11.7566$ is the 20% darker color. If you saturate the color by 10%, you get $60.9453, 3.4088, 18.1134$, and if you desaturate by 10%, it is $67.4865, -1.2980, 10.2457$.

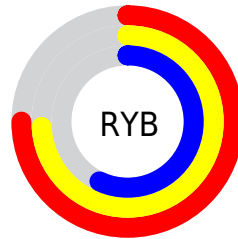
Distribution



Red (75%)

Green (66%)

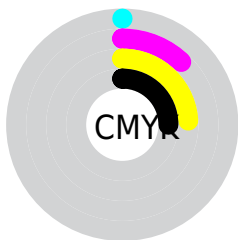
Blue (57%)



Red (75%)

Yellow (74%)

Blue (57%)

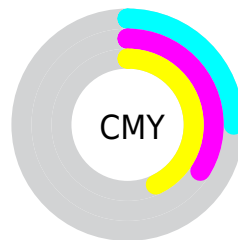


Cyan (0%)

Magenta (12%)

Yellow (24%)

Black (25%)



Cyan (25%)

Magenta (34%)

Yellow (43%)

Brightness & Saturation Gradients

These gradients show how the HunterLab color 64.1537, 0.9094, 14.4147 changes by changing the brightness by 10 percent. The first figure shows a shift by +10% for each color and the second figure -10%.

Similar to the brightness gradients but the following saturation gradients show a change of the HunterLab color 64.1537, 0.9094, 14.4147 by changing the saturation by 10% instead.

■ 64.1537, 0.9094,
14.4147

■ 64.1537, 0.9094,
14.4147

187.3457, -3.8528,
26.6236

■ 53.3322, 1.2335,
13.0398

■ 87.7069, 0.1137,
17.1276

■ 43.1973, 1.5063,
11.6392

■ 100.3714, -0.3466,
18.4751

■ 33.8007, 1.7194,
10.2001

113.5929, -0.8457,
19.8220

■ 25.2059, 1.8639,
8.7008

127.3488, -1.3811,
21.1710

■ 17.4961, 1.9268,
7.1051

141.6191, -1.9512,
22.5242

■ 10.7876, 1.8878,
6.2826

156.3859, -2.5540,

■ 1.7827, 11.8143,

23.8833

1.2479

171.6330, -3.1884,
25.2494

0.0000, NaN, NaN

0.0000, NaN, NaN

■ 64.1537, 0.9094,
14.4147

■ 64.1537, 0.9094,
14.4147

■ 60.9453, 3.4088,
18.1134

■ 67.4865, -1.2980,
10.2457

■ 57.8678, 6.2246,
21.2875

■ 70.9294, -3.2272,
5.6513

■ 54.9344, 9.3681,
23.8846

■ 74.4751, -4.9014,
0.6754

■ 52.1577, 12.8453,
25.8523

■ 78.1155, -6.3411,
-4.6436

■ 49.5508, 16.6503,

■ 81.8437, -7.5659,

27.1456

-10.2720

■ 47.1266, 20.7593,
27.7366

■ 85.4393, -9.7780,
-13.1763

■ 44.8965, 25.1235,
27.6326

■ 88.5872, -14.7332,
-8.9904

■ 43.5599, 27.9983,
27.3315

■ 91.7945, -19.6230,
-4.8872

■ 94.7715, -24.0319,
-1.2105

Harmonies

Analogous

The Analogous color harmony consists of three colors that are next to each other on the color wheel.



64.1552, 6.9263, 11.3419



64.1537, 0.9094, 14.4147



64.1552, -6.0373, 14.7564

Triad

The Triadic color harmony groups three colors that are evenly spaced from another and form a triangle on the color wheel.



64.1552, 0.9073, 14.4156



64.1552, -16.0208, 0.9377



64.1552, 5.6509, -6.8127

Complementary

The Complementary color scheme is a pair of colors which are on the opposite of each other on the color wheel.



64.1537, 0.9094, 14.4147



61.8446, -5.9222, -9.2498

Split Complementary

Split-complementary colors differ from the complementary color scheme. The scheme consists of three colors, the original color and two neighbors of the complement color.



64.1552, -0.7734, -10.2771



64.1537, 0.9094, 14.4147



64.1552, -13.1620, -5.4949

Square

The Square scheme is like the rectangle color scheme, but the four colors are evenly spaced on the color wheel.



64.1552, 0.9073, 14.4156



64.1552, -15.6140, 7.4295



64.1552, -7.6484, -9.7707



64.1552, 9.7444, -0.7118

Rectangle

The Rectangle color scheme consists of four colors that form a rectangle on the color wheel.



64.1537, 0.9094, 14.4147



64.1552, -10.2377, 13.4357



64.1552, -7.6484, -9.7707



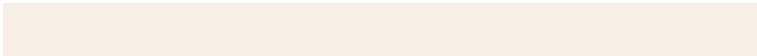
64.1552, 3.6811, -8.3521

Sweetspot

The Sweet Spot groups the original color and five complimentary colors.



64.1552, 0.9073, 14.4156



93.2710, -3.4426, 9.8078



58.7440, 15.5519, -1.5397



43.5751, -1.5406, 4.7736



98.8636, -5.2751, 5.3714



45.2661, -2.4153, 2.4594

Same Dimension

The Same Dimension uses a secret algorithm to generate beautiful new colors.



64.1552, 0.9073, 14.4156



83.7387, 2.7980, 21.7919



70.7724, -9.9955, 20.6521



32.0715, -0.9974, 3.8893



35.5388, 22.1661, 22.2869



7.9103, 2.4808, 4.9177

Inverse Universe

The Inverse Universe completely reimagines the original color for something new.



61.8446, -5.9222, -9.2498



80.0284, -8.1403, -16.2320



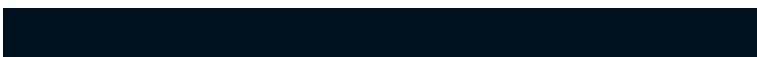
55.3741, 5.1310, -18.5651



31.6381, -2.2836, -0.5445



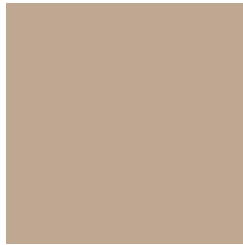
28.8551, 5.8415, -48.6766



6.7584, -0.6803, -6.9788

Previews

White Background



This preview shows how the HunterLab color 64.1537, 0.9094, 14.4147 looks on a white background.

Color Contrast Check

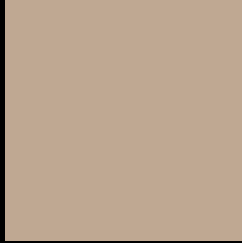
Large Text (above 18pt) WCAG AA × Fail

Any Text WCAG AA × Fail

Large Text (above 18pt) WCAG AAA × Fail

Any Text WCAG AAA × Fail

Black Background



This preview shows how the HunterLab color 64.1537, 0.9094, 14.4147 looks on a black background.

Color Contrast Check

Large Text (above 18pt) WCAG AA ✓ Pass

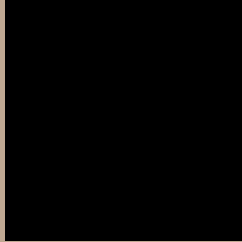
Any Text WCAG AA ✓ Pass

Large Text (above 18pt) WCAG AAA ✓ Pass

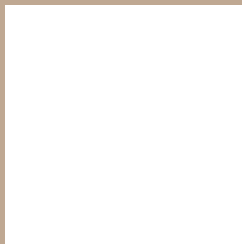
Any Text WCAG AAA ✓ Pass

If you want to check with other color combinations, try the [Color Contrast Checker](#).

HunterLab 64.1537, 0.9094, 14.4147 Background



This preview shows how black text looks on a background with the HunterLab color 64.1537, 0.9094, 14.4147.



This preview shows how white text looks on a background with the HunterLab color 64.1537, 0.9094,

Color Blindness Simulation

Color vision deficiency is a very complex topic, and I could not describe the different causes any better than Wikipedia does, so if you want to learn more, you should check out their [article about color blindness](#).

Dichromacy



Original Color

64.1537, 0.9094, 14.4147

Protanopia

64.3948, -4.1579, 13.8110

Deuteranopia

64.0245, 4.8638, 14.3536



Tritanopia

64.2554, 8.7216, 1.8464

Trichromacy



Original Color

64.1537, 0.9094, 14.4147

Protanomaly

64.4567, -2.4788, 14.2834

Deuteranomaly

63.9921, 3.3006, 14.2935

Tritanomaly

64.1063, 6.1380, 6.6866

Monochromacy



Original Color

64.1537, 0.9094, 14.4147

Achromatopsia

64.2295, -3.4271, 3.4897

Achromatomaly

64.3070, -2.1618, 7.6408

CSS Examples

Text

The CSS property to change the color of the text to HunterLab 64.1537, 0.9094, 14.4147 is called "color". The color property can be set on classes, ids or directly on the HTML element.

This example shows how text in the color `rgb(191, 168, 146)` looks like.

```
.text, #text, p{  
    color:rgb(191, 168, 146)  
}
```

If you want to add a text shadow in that color use the text-shadow property, you can generate a text shadow directly with our [CSS Text Shadow Generator](#).

Here you see how black text with a 4 pixel rgb(191, 168, 146) colored shadow looks like.

```
.shadow{ text-shadow: 4px 4px 2px rgb(191, 168, 146) }
```

Border

The CSS property to change the border of an element to HunterLab 64.1537, 0.9094, 14.4147 is called "border". The border property can be set on classes, ids or directly on the HTML element.

This example shows the color as border, it can be applied via the CSS property "border" or "border-color".

```
.border, #border, table{ border:4px solid rgb(191, 168, 146) }
```


If only the border color should be changed use the property `border-color`.

```
.border{ border-color:rgb(191, 168, 146) }
```

If you want to add a box shadow in that color use:

Here you see how a box with a 4 pixel `rgb(191, 168, 146)` colored shadow looks like.

```
.boxshadow{ -moz-box-shadow:4px 4px 4px 4px rgb(191, 168, 146); -webkit-box-shadow:4px 4px 4px 4px rgb(191, 168, 146); box-shadow:4px 4px 4px 4px rgb(191, 168, 146) }
```

Background

The CSS property to change the background color of an element to HunterLab 64.1537, 0.9094, 14.4147 is called "background". The background property can be set on classes, ids or directly on the HTML element.

```
.background, #background, body{  
background: rgb(191, 168, 146) }
```

If only the background color should be changed can be used:

```
.background{ background-color: rgb(191,  
168, 146) }
```

This example shows the color as background, it is applied via the CSS property "background".

To optimize and compress your CSS code, you can use our [online CSS compressor and optimizer](#) based on csstidy. If you want to create a linear or radial gradient as background or border, check our [CSS Gradient Generator](#).

Hey! You found this booklet interesting? Support Converting Colors with the new Membership Option!

The pro membership hides all ads, plus gives you double the colors in the color bucket, and more awesome pro features!

[Learn more, Memberships starting at \\$2.50/m!](#)

**Follow me
on Twitter!**

@ConvertingColor