

Converting Colors

HunterLab(64.1620, 8.2522,
12.2217)

Have a look what the booklet for
HunterLab(64.1620, 8.2522,
12.2217) contains.

HunterLab(64.1544, 8.4651, 12.2265)	3
<i>Conversions</i>	4
<i>Details</i>	6
<i>Harmonies</i>	12
<i>Previews</i>	24
<i>Color Blindness Simulation</i>	28
<i>CSS Examples</i>	31

Color

**HunterLab(64.1544, 8.4651,
12.2265)**

Conversions

Conversions Part 1

Format	Color
Hex	CBA398
RGB	203, 163, 152
RGB Percent	80%, 64%, 60%
CMY	0.2039, 0.3608, 0.4039
CMYK	0.00, 0.20, 0.25, 0.20
HSL	13°, 33%, 70%
HSV	13°, 25%, 80%
XYZ	43.3933, 41.1579, 35.3629
YIQ	173.7060, 27.3710, 5.0590

Conversions

Conversions Part 2

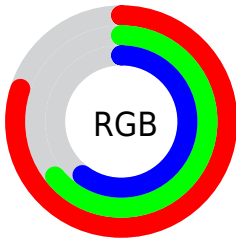
Format	Color
R _Y B	203, 166, 152
Decimal	13345688
CIE Lab	70.29, 13.08, 11.30
CIE LCh	70, 17.280, 40.818
Yxy	41.1598, 0.3619, 0.3432
Android (android.graphics.Color)	4291535768 (0xFFCBA398)
YUV	173.7060, -10.7011, 25.6908
Hunter-Lab	64.1544, 8.4651, 12.2265

Details

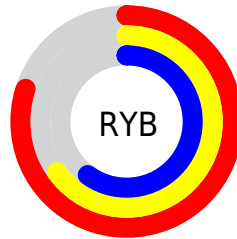
The HunterLab color $64.1544, 8.4651, 12.2265$ is a light color, and the websafe version is hex $CC9999$. A complement of this color would be $69.7747, -13.1824, -5.2461$, and the grayscale version is $64.9732, -3.4668, 3.5301$.

A 20% lighter version of the original color is $87.0971, 6.3130, 14.0295$, and $43.1328, 8.3040, 9.7997$ is the 20% darker color. If you saturate the color by 10%, you get $59.3702, 14.0196, 15.1357$, and if you desaturate by 10%, it is $69.2076, 3.2277, 9.1351$.

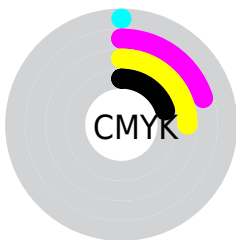
Distribution



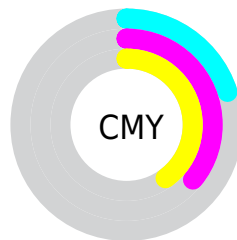
- Red (80%)
- Green (64%)
- Blue (60%)



- Red (80%)
- Yellow (65%)
- Blue (60%)



- Cyan (0%)
- Magenta (20%)
- Yellow (25%)
- Black (20%)



- Cyan (20%)
- Magenta (36%)
- Yellow (40%)

Brightness & Saturation Gradients

These gradients show how the HunterLab color 64.1544, 8.4651, 12.2265 changes by changing the brightness by 10 percent. The first figure shows a shift by +10% for each color and the second figure -10%.

Similar to the brightness gradients but the following saturation gradients show a change of the HunterLab color 64.1544, 8.4651, 12.2265 by changing the saturation by 10% instead.


 64.1544, 8.4651,
12.2265


 64.1544, 8.4651,
12.2265


187.3467, 6.6880,
23.1865

 53.3329, 8.3817,
11.0331


 87.7077, 8.4249,
14.6118

 43.1979, 8.2232,
9.8293


 100.3723, 8.3180,
15.8094

 33.8013, 7.9763,
8.6066


113.5938, 8.1587,
17.0138

 25.2064, 7.6258,
7.3495

127.3497, 7.9507,
18.2268

 17.4965, 7.1507,
6.0319

141.6201, 7.6970,
19.4497

 10.7880, 6.5203,
5.0762

156.3869, 7.4005,

 1.7847, 31.8333,

20.6835

1.2493

171.6340, 7.0635,
21.9289

0.0000, NaN, NaN

0.0000, NaN, NaN

■ 64.1544, 8.4651,
12.2265

■ 64.1544, 8.4651,
12.2265

■ 59.3702, 14.0196,
15.1357

■ 69.2076, 3.2277,
9.1351

■ 54.8909, 19.8993,
17.8023

■ 74.4915, -1.7049,
5.9005

■ 50.7652, 26.0703,
20.1514

■ 79.9797, -6.3627,
2.5542

■ 47.0471, 32.4470,
22.0879

■ 85.6489, -10.7756,
-0.8824

■ 43.7948, 38.8664,

■ 91.4797, -14.9733,

23.5042

-4.3935

■ 41.0653, 45.0707,
24.3004

■ 95.6225, -20.9165,
-0.1049

■ 38.9045, 50.7120,
24.4273

■ 38.0567, 53.1085,
24.3801

Harmonies

Analogous

The Analogous color harmony consists of three colors that are next to each other on the color wheel.



64.1559, 12.1649, 6.1423



64.1544, 8.4651, 12.2265



64.1559, 1.6344, 15.6820

Triad

The Triadic color harmony groups three colors that are evenly spaced from another and form a triangle on the color wheel.



64.1559, 8.4628, 12.2275



64.1559, -17.1356, 8.0552



64.1559, -0.5542, -12.3616

Complementary

The Complementary color scheme is a pair of colors which are on the opposite of each other on the color wheel.



64.1544, 8.4651, 12.2265



69.7747, -13.1824, -5.2461

Split Complementary

Split-complementary colors differ from the complementary color scheme. The scheme consists of three colors, the original color and two neighbors of the complement color.



64.1559, -8.3355, -11.6881



64.1544, 8.4651, 12.2265



64.1559, -17.6582, 0.7239

Square

The Square scheme is like the rectangle color scheme, but the four colors are evenly spaced on the color wheel.



64.1559, 8.4628, 12.2275



64.1559, -13.0451, 13.4819



64.1559, -14.5087, -6.6756



64.1559, 6.7942, -8.4175

Rectangle

The Rectangle color scheme consists of four colors that form a rectangle on the color wheel.



64.1544, 8.4651, 12.2265



64.1559, -3.6432, 16.3113



64.1559, -14.5087, -6.6756



64.1559, -3.2098, -12.6787

Sweetspot

The Sweet Spot groups the original color and five complimentary colors.



64.1559, 8.4628, 12.2275



94.3234, -0.3404, 8.9011



62.4458, 20.6678, -8.9511



43.1535, 0.2893, 4.4148

0.0000, NaN, NaN



46.2646, -2.4686, 2.5136

Same Dimension

The Same Dimension uses a secret algorithm to generate beautiful new colors.



64.1559, 8.4628, 12.2275



79.7041, 14.6934, 17.8426



71.2757, -3.9832, 19.1392



34.0581, 0.1740, 3.4427



30.5409, 41.8048, 19.5510



7.7201, 7.2566, 4.8841

Inverse Universe

The Inverse Universe completely reimagines the original color for something new.



69.7747, -13.1824, -5.2461



88.4202, -18.9861, -9.2873



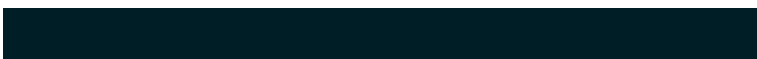
62.2376, -1.0700, -15.4925



35.0716, -3.7110, 0.2953



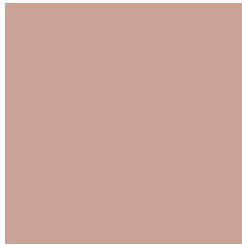
43.2502, -14.4372, -22.8932



10.3439, -3.9842, -4.3283

Previews

White Background



This preview shows how the HunterLab color 64.1544, 8.4651, 12.2265 looks on a white background.

Color Contrast Check

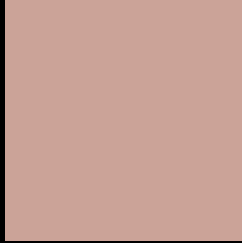
Large Text (above 18pt) WCAG AA × Fail

Any Text WCAG AA × Fail

Large Text (above 18pt) WCAG AAA × Fail

Any Text WCAG AAA × Fail

Black Background



This preview shows how the HunterLab color 64.1544, 8.4651, 12.2265 looks on a black background.

Color Contrast Check

Large Text (above 18pt) WCAG AA ✓ Pass

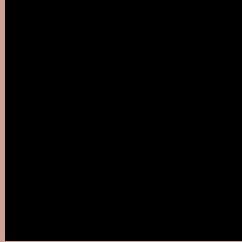
Any Text WCAG AA ✓ Pass

Large Text (above 18pt) WCAG AAA ✓ Pass

Any Text WCAG AAA ✓ Pass

If you want to check with other color combinations, try the [Color Contrast Checker](#).

HunterLab 64.1544, 8.4651, 12.2265 Background



This preview shows how black text looks on a background with the HunterLab color 64.1544, 8.4651, 12.2265.



This preview shows how white text looks on a background with the HunterLab color 64.1544, 8.4651,

Color Blindness Simulation

Color vision deficiency is a very complex topic, and I could not describe the different causes any better than Wikipedia does, so if you want to learn more, you should check out their [article about color blindness](#).

Dichromacy



Original Color

64.1544, 8.4651, 12.2265

Protanopia

64.4120, -3.6909, 10.6743

Deuteranopia

64.2204, 4.3171, 12.6175



Tritanopia

64.1087, 13.6449, 3.6463

Trichromacy



Original Color

64.1544, 8.4651, 12.2265

Protanomaly

64.3691, 0.6155, 11.1113

Deuteranomaly

64.2548, 5.8811, 12.6805

Tritanomaly

64.0654, 11.7002, 6.7377

Monochromacy



Original Color

64.1544, 8.4651, 12.2265

Achromatopsia

65.0590, -3.4714, 3.5348

Achromatomaly

64.6660, 0.7405, 6.7827

CSS Examples

Text

The CSS property to change the color of the text to HunterLab 64.1544, 8.4651, 12.2265 is called "color". The color property can be set on classes, ids or directly on the HTML element.

This example shows how text in the color `rgb(203, 163, 152)` looks like.

```
.text, #text, p{  
    color:rgb(203, 163, 152)  
}
```

If you want to add a text shadow in that color use the text-shadow property, you can generate a text shadow directly with our [CSS Text Shadow Generator](#).

Here you see how black text with a 4 pixel rgb(203, 163, 152) colored shadow looks like.

```
.shadow{ text-shadow: 4px 4px 2px rgb(203, 163, 152) }
```

Border

The CSS property to change the border of an element to HunterLab 64.1544, 8.4651, 12.2265 is called "border". The border property can be set on classes, ids or directly on the HTML element.

This example shows the color as border, it can be applied via the CSS property "border" or "border-color".

```
.border, #border, table{ border:4px solid rgb(203, 163, 152) }
```


If only the border color should be changed use the property `border-color`.

```
.border{ border-color:rgb(203, 163, 152) }
```

If you want to add a box shadow in that color use:

Here you see how a box with a 4 pixel `rgb(203, 163, 152)` colored shadow looks like.

```
.boxshadow{ -moz-box-shadow:4px 4px 4px  
4px rgb(203, 163, 152); -webkit-box-  
shadow:4px 4px 4px 4px rgb(203, 163, 152);  
box-shadow:4px 4px 4px 4px rgb(203, 163,  
152) }
```

Background

The CSS property to change the background color of an element to HunterLab 64.1544, 8.4651, 12.2265 is called "background". The background property can be set on classes, ids or directly on the HTML element.

```
.background, #background, body{  
background: rgb(203, 163, 152) }
```

If only the background color should be changed can be used:

```
.background{ background-color: rgb(203,  
163, 152) }
```

This example shows the color as background, it is applied via the CSS property "background".

To optimize and compress your CSS code, you can use our [online CSS compressor and optimizer](#) based on csstidy. If you want to create a linear or radial gradient as background or border, check our [CSS Gradient Generator](#).

Hey! You found this booklet interesting? Support Converting Colors with the new Membership Option!

The pro membership hides all ads, plus gives you double the colors in the color bucket, and more awesome pro features!

[Learn more, Memberships starting at \\$2.50/m!](#)

**Follow me
on Twitter!**

@ConvertingColor