

Converting Colors

HunterLab(64.2324, 13.3172,
12.5806)

Have a look what the booklet for
HunterLab(64.2324, 13.3172,
12.5806) contains.

HunterLab(64.3472, 13.3039, 12.5123)	3
<i>Conversions</i>	4
<i>Details</i>	6
<i>Harmonies</i>	12
<i>Previews</i>	24
<i>Color Blindness Simulation</i>	28
<i>CSS Examples</i>	31

Color

**HunterLab(64.3472, 13.3039,
12.5123)**

Conversions

Conversions Part 1

Format	Color
Hex	D4A098
RGB	212, 160, 152
RGB Percent	83%, 63%, 60%
CMY	0.1686, 0.3725, 0.4039
CMYK	0.00, 0.25, 0.28, 0.17
HSL	8°, 41%, 71%
HSV	8°, 28%, 83%
XYZ	45.3896, 41.4056, 35.3055
YIQ	174.6360, 33.5600, 8.5360

Conversions

Conversions Part 2

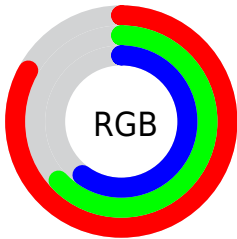
Format	Color
R _Y B	212, 161, 152
Decimal	13934744
CIE Lab	70.46, 18.15, 11.67
CIE LCh	70, 21.575, 32.737
Yxy	41.4076, 0.3717, 0.3391
Android (android.graphics.Color)	4292124824 (0xFFD4A098)
YUV	174.6360, -11.1595, 32.7682
Hunter-Lab	64.3472, 13.3039, 12.5123

Details

The HunterLab color $64.3472, 13.3039, 12.5123$ is a light color, and the websafe version is hex $CC9999$. A complement of this color would be $73.9005, -17.1911, -4.7368$, and the grayscale version is $65.3595, -3.4874, 3.5511$.

A 20% lighter version of the original color is $86.2074, 7.9119, 13.0990$, and $43.2812, 12.6056, 10.0245$ is the 20% darker color. If you saturate the color by 10%, you get $59.0487, 20.1613, 15.2489$, and if you desaturate by 10%, it is $70.0093, 6.7751, 9.6898$.

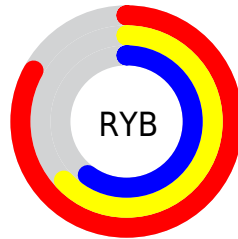
Distribution



Red (83%)

Green (63%)

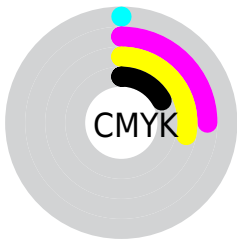
Blue (60%)



Red (83%)

Yellow (63%)

Blue (60%)

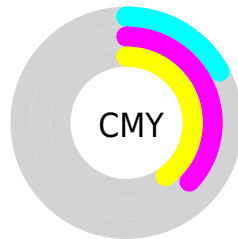


Cyan (0%)

Magenta (25%)

Yellow (28%)

Black (17%)



Cyan (17%)


Magenta (37%)


Yellow (40%)

Brightness & Saturation Gradients


These gradients show how the HunterLab color 64.3472, 13.3039, 12.5123 changes by changing the brightness by 10 percent. The first figure shows a shift by +10% for each color and the second figure -10%.


Similar to the brightness gradients but the following saturation gradients show a change of the HunterLab color 64.3472, 13.3039, 12.5123 by changing the saturation by 10% instead.


 64.3472, 13.3039,
12.5123


 64.3472, 13.3039,
12.5123


187.6223, 13.3119,
23.6202

 53.5142, 12.9812,
11.2978


 87.9217, 13.7110,
14.9361

 43.3669, 12.5715,
10.0713


 100.5961, 13.8147,
16.1513

 33.9571, 12.0597,
8.8237


113.8270, 13.8584,
17.3726

 25.3477, 11.4291,
7.5391

127.5920, 13.8466,
18.6018

 17.6217, 10.6579,
6.1905

141.8711, 13.7830,
19.8402

 10.8946, 9.7197,
5.2034

156.6463, 13.6709,

 2.2579, 34.9023,

21.0889

1.5806

171.9016, 13.5130,
22.3487

0.0000, NaN, NaN

0.0000, NaN, NaN

■ 64.3472, 13.3039,
12.5123

■ 64.3472, 13.3039,
12.5123

■ 59.0487, 20.1613,
15.2489

■ 70.0093, 6.7751,
9.6898

■ 54.1711, 27.3164,
17.8368

■ 75.9794, 0.5795,
6.8159

■ 49.7886, 34.6575,
20.1878

■ 82.2172, -5.3094,
3.9144

■ 45.9819, 41.9685,
22.1807

■ 88.6888, -10.9241,
0.9980

■ 42.8326, 48.9002,

■ 95.2642, -16.8711,

23.6713

-0.4754

■ 40.4084, 54.9858,
24.5291

■ 96.3001, -18.4566,
0.7685

■ 38.7377, 59.7180,
24.7572

■ 38.5241, 60.3435,
24.7948

Harmonies

Analogous

The Analogous color harmony consists of three colors that are next to each other on the color wheel.



64.3487, 16.6186, 4.3582



64.3472, 13.3039, 12.5123



64.3487, 5.4808, 17.5617

Triad

The Triadic color harmony groups three colors that are evenly spaced from another and form a triangle on the color wheel.



64.3487, 13.3014, 12.5133



64.3487, -19.4391, 11.2292



64.3487, -2.5289, -17.2437

Complementary

The Complementary color scheme is a pair of colors which are on the opposite of each other on the color wheel.



64.3472, 13.3039, 12.5123



73.9005, -17.1911, -4.7368

Split Complementary

Split-complementary colors differ from the complementary color scheme. The scheme consists of three colors, the original color and two neighbors of the complement color.



64.3487, -11.8940, -14.6819



64.3472, 13.3039, 12.5123



64.3487, -21.3021, 2.6353

Square

The Square scheme is like the rectangle color scheme, but the four colors are evenly spaced on the color wheel.



64.3487, 13.3014, 12.5133



64.3487, -13.3731, 16.9025



64.3487, -18.6219, -7.0349



64.3487, 7.1413, -13.5912

Rectangle

The Rectangle color scheme consists of four colors that form a rectangle on the color wheel.



64.3472, 13.3039, 12.5123



64.3487, -1.0224, 18.9491



64.3487, -18.6219, -7.0349



64.3487, -5.8164, -17.0813

Sweetspot

The Sweet Spot groups the original color and five complimentary colors.



64.3487, 13.3014, 12.5133



93.8029, 0.5529, 8.3229



63.8855, 25.8889, -13.1985



42.8691, 0.7806, 4.1010

0.0000, NaN, NaN



46.2646, -2.4686, 2.5136

Same Dimension

The Same Dimension uses a secret algorithm to generate beautiful new colors.



64.3487, 13.3014, 12.5133



75.2907, 21.4671, 17.4812



72.8638, -2.0031, 20.6910



35.6163, 0.5965, 3.3780



30.4067, 46.9624, 19.5586



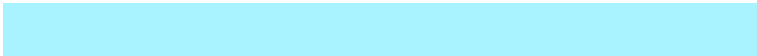
8.0420, 9.7601, 5.1263

Inverse Universe

The Inverse Universe completely reimagines the original color for something new.



73.9005, -17.1911, -4.7368



89.4086, -23.8148, -8.0615



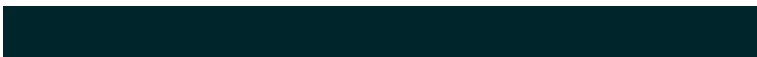
64.5766, -2.5284, -17.4408



37.1646, -4.3079, 0.5902



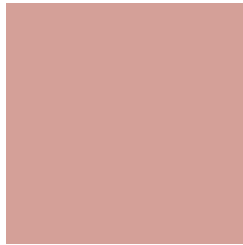
49.1248, -20.7985, -16.5037



12.3923, -5.5274, -3.5573

Previews

White Background



This preview shows how the HunterLab color 64.3472, 13.3039, 12.5123 looks on a white background.

Color Contrast Check

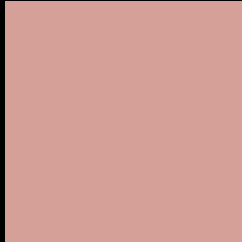
Large Text (above 18pt) WCAG AA × Fail

Any Text WCAG AA × Fail

Large Text (above 18pt) WCAG AAA × Fail

Any Text WCAG AAA × Fail

Black Background



This preview shows how the HunterLab color 64.3472, 13.3039, 12.5123 looks on a black background.

Color Contrast Check

Large Text (above 18pt) WCAG AA ✓ Pass

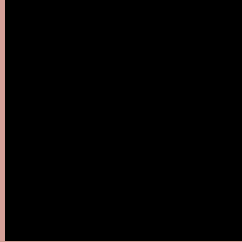
Any Text WCAG AA ✓ Pass

Large Text (above 18pt) WCAG AAA ✓ Pass

Any Text WCAG AAA ✓ Pass

If you want to check with other color combinations, try the [Color Contrast Checker](#).

HunterLab 64.3472, 13.3039, 12.5123 Background



This preview shows how black text looks on a background with the HunterLab color 64.3472, 13.3039, 12.5123.



This preview shows how white text looks on a background with the HunterLab color 64.3472, 13.3039,

Color Blindness Simulation

Color vision deficiency is a very complex topic, and I could not describe the different causes any better than Wikipedia does, so if you want to learn more, you should check out their [article about color blindness](#).

Dichromacy



Original Color

64.3472, 13.3039, 12.5123

Protanopia

64.4650, -3.4004, 9.9125

Deuteranopia

64.3250, 4.6683, 12.7321



Tritanopia

64.2454, 18.0169, 5.2622

Trichromacy



Original Color

64.3472, 13.3039, 12.5123

Protanomaly

64.4065, 2.2745, 10.7729

Deuteranomaly

64.2976, 7.4603, 12.7526

Tritanomaly

64.2216, 16.2397, 7.8679

Monochromacy



Original Color

64.3472, 13.3039, 12.5123

Achromatopsia

65.4745, -3.4936, 3.5574

Achromatomaly

64.9853, 1.8844, 6.7214

CSS Examples

Text

The CSS property to change the color of the text to HunterLab 64.3472, 13.3039, 12.5123 is called "color". The color property can be set on classes, ids or directly on the HTML element.

This example shows how text in the color `rgb(212, 160, 152)` looks like.

```
.text, #text, p{  
    color:rgb(212, 160, 152)  
}
```

If you want to add a text shadow in that color use the text-shadow property, you can generate a text shadow directly with our [CSS Text Shadow Generator](#).

Here you see how black text with a 4 pixel rgb(212, 160, 152) colored shadow looks like.

```
.shadow{ text-shadow: 4px 4px 2px rgb(212, 160, 152) }
```

Border

The CSS property to change the border of an element to HunterLab 64.3472, 13.3039, 12.5123 is called "border". The border property can be set on classes, ids or directly on the HTML element.

This example shows the color as border, it can be applied via the CSS property "border" or "border-color".

```
.border, #border, table{ border:4px solid rgb(212, 160, 152) }
```


If only the border color should be changed use the property border-color.

```
.border{ border-color:rgb(212, 160, 152) }
```

If you want to add a box shadow in that color use:

Here you see how a box with a 4 pixel rgb(212, 160, 152) colored shadow looks like.

```
.boxshadow{ -moz-box-shadow:4px 4px 4px  
4px rgb(212, 160, 152); -webkit-box-  
shadow:4px 4px 4px 4px rgb(212, 160, 152);  
box-shadow:4px 4px 4px 4px rgb(212, 160,  
152) }
```

Background

The CSS property to change the background color of an element to HunterLab 64.3472, 13.3039, 12.5123 is called "background". The background property can be set on classes, ids or directly on the HTML element.

```
.background, #background, body{  
background: rgb(212, 160, 152) }
```

If only the background color should be changed can be used:

```
.background{ background-color: rgb(212,  
160, 152) }
```

This example shows the color as background, it is applied via the CSS property "background".

To optimize and compress your CSS code, you can use our [online CSS compressor and optimizer](#) based on csstidy. If you want to create a linear or radial gradient as background or border, check our [CSS Gradient Generator](#).

Hey! You found this booklet interesting? Support Converting Colors with the new Membership Option!

The pro membership hides all ads, plus gives you double the colors in the color bucket, and more awesome pro features!

[Learn more, Memberships starting at \\$2.50/m!](#)

**Follow me
on Twitter!**

@ConvertingColor