

Converting Colors

HunterLab(64.2715, 5.8687,
8.2992)

Have a look what the booklet for
HunterLab(64.2715, 5.8687, 8.2992)
contains.

| | |
|---|----|
| HunterLab(64.1257, 6.0340, 8.0148) | 3 |
| <i>Conversions</i> | 4 |
| <i>Details</i> | 6 |
| <i>Harmonies</i> | 12 |
| <i>Previews</i> | 24 |
| <i>Color Blindness Simulation</i> | 28 |
| <i>CSS Examples</i> | 31 |

Color

**HunterLab(64.1257, 6.0340,
8.0148)**

Conversions

Conversions Part 1

| Format | Color |
|-------------|---------------------------|
| Hex | C3A5A2 |
| RGB | 195, 165, 162 |
| RGB Percent | 76%, 65%, 64% |
| CMY | 0.2353, 0.3529, 0.3647 |
| CMYK | 0.00, 0.15, 0.17, 0.24 |
| HSL | 5°, 22%, 70% |
| HSV | 5°, 17%, 76% |
| XYZ | 42.4825, 41.1211, 39.8806 |
| YIQ | 173.6280, 18.8430, 5.4270 |

Conversions

Conversions Part 2

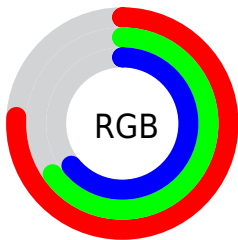
| Format | Color |
|-------------------------------------|-------------------------------|
| R_{YB} | 195, 165, 162 |
| Decimal | 12821922 |
| CIE _{Lab} | 70.26, 10.48, 5.63 |
| CIE _{LCh} | 70, 11.892, 28.254 |
| Yxy | 41.1229, 0.3440, 0.3330 |
| Android (android.graphics.Color) | 4291012002 (0xFFC3A5A2) |
| YUV | 173.6280, -5.7326, 18.7432 |
| Hunter-Lab | 64.1257, 6.0340, 8.0148 |

Details

The HunterLab color $64.1257, 6.0340, 8.0148$ is a light color, and the websafe version is hex $CC9999$. A complement of this color would be $70.2280, -12.0800, -0.5261$, and the grayscale version is $64.9234, -3.4641, 3.5274$.

A 20% lighter version of the original color is $87.6879, 5.8597, 9.7492$, and $43.1263, 6.0844, 6.3999$ is the 20% darker color. If you saturate the color by 10%, you get $58.7578, 12.3202, 10.3994$, and if you desaturate by 10%, it is $69.7960, 0.0415, 5.6434$.

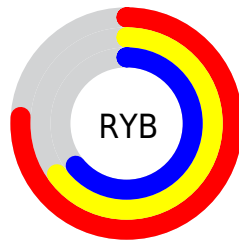
Distribution



Red (76%)

Green (65%)

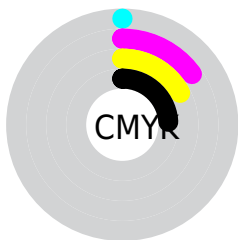
Blue (64%)



Red (76%)

Yellow (65%)

Blue (64%)

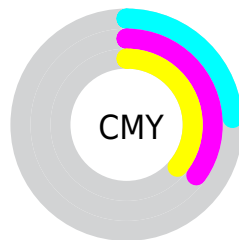


Cyan (0%)

Magenta (15%)

Yellow (17%)

Black (24%)



Cyan (24%)


Magenta (35%)


Yellow (36%)

Brightness & Saturation Gradients


These gradients show how the HunterLab color 64.1257, 6.0340, 8.0148 changes by changing the brightness by 10 percent. The first figure shows a shift by +10% for each color and the second figure -10%.


Similar to the brightness gradients but the following saturation gradients show a change of the HunterLab color 64.1257, 6.0340, 8.0148 by changing the saturation by 10% instead.


 64.1257, 6.0340,
8.0148


 64.1257, 6.0340,
8.0148


187.3056, 3.3225,
16.7916

 53.3058, 6.0775,
7.1351


 87.6758, 5.7584,
9.8312

 43.1727, 6.0527,
6.2704

 100.3389, 5.5410,
10.7674

 33.7781, 5.9476,
5.4190

113.5590, 5.2753,
11.7229

 25.1854, 5.7489,
4.5762

127.3136, 4.9647,
12.6979

 17.4779, 5.4370,
3.7331

141.5827, 4.6118,
13.6923

 10.7722, 4.9824,
2.8984

156.3482, 4.2192,

 1.7029, 26.7139,

14.7062

1.1920

171.5941, 3.7888,
15.7393

0.0000, NaN, NaN

0.0000, NaN, NaN

■ 64.1257, 6.0340,
8.0148

■ 64.1257, 6.0340,
8.0148

■ 58.7578, 12.3202,
10.3994

■ 69.7960, 0.0415,
5.6434

■ 53.7394, 18.9051,
12.7701

■ 75.7226, -5.6722,
3.2932

■ 49.1348, 25.7416,
15.0836

■ 81.8735, -11.1393,
0.9690

■ 45.0180, 32.7090,
17.2656

■ 88.2215, -16.3920,
-1.3294

■ 41.4721, 39.5725,

■ 94.5896, -22.3372,

19.2059

-1.4068

■ 38.5799, 45.9600,
20.7619

■ 95.0485, -23.0146,
-0.8495

■ 36.4081, 51.3891,
21.7899

■ 34.9803, 55.3808,
22.2322

■ 34.6795, 56.2439,
22.3540

Harmonies

Analogous

The Analogous color harmony consists of three colors that are next to each other on the color wheel.



64.1271, 7.3465, 3.1873



64.1257, 6.0340, 8.0148



64.1271, 2.1606, 11.3743

Triad

The Triadic color harmony groups three colors that are evenly spaced from another and form a triangle on the color wheel.



64.1271, 6.0320, 8.0158



64.1271, -12.0633, 8.4989



64.1271, -3.7429, -7.2498

Complementary

The Complementary color scheme is a pair of colors which are on the opposite of each other on the color wheel.



64.1257, 6.0340, 8.0148



70.2280, -12.0800, -0.5261

Split Complementary

Split-complementary colors differ from the complementary color scheme. The scheme consists of three colors, the original color and two neighbors of the complement color.



64.1271, -8.8259, -5.5415



64.1257, 6.0340, 8.0148



64.1271, -13.5295, 3.7925

Square

The Square scheme is like the rectangle color scheme, but the four colors are evenly spaced on the color wheel.



64.1271, 6.0320, 8.0158



64.1271, -8.2924, 11.6364



64.1271, -12.3640, -1.3905



64.1271, 1.5918, -5.8874

Rectangle

The Rectangle color scheme consists of four colors that form a rectangle on the color wheel.



64.1257, 6.0340, 8.0148



64.1271, -1.2860, 12.4720



64.1271, -12.3640, -1.3905



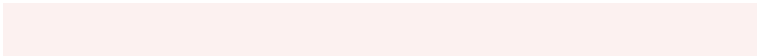
64.1271, -5.5365, -7.0130

Sweetspot

The Sweet Spot groups the original color and five complimentary colors.



64.1271, 6.0320, 8.0158



94.8458, -1.3822, 6.9696



64.2341, 12.5536, -6.3648



44.1222, -0.3862, 3.3674

0.0000, NaN, NaN



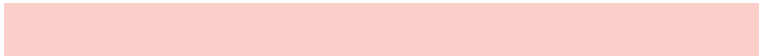
46.2646, -2.4686, 2.5136

Same Dimension

The Same Dimension uses a secret algorithm to generate beautiful new colors.



64.1271, 6.0320, 8.0158



83.3382, 10.8777, 11.8075



68.8192, -2.1518, 12.9186



31.9719, 0.6907, 2.9083



28.0568, 45.0155, 18.0765



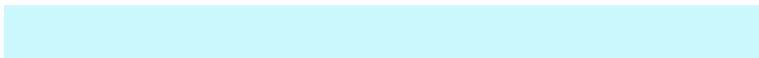
6.2555, 8.0218, 3.9950

Inverse Universe

The Inverse Universe completely reimagines the original color for something new.



70.2280, -12.0800, -0.5261



93.0877, -18.1075, -1.8532



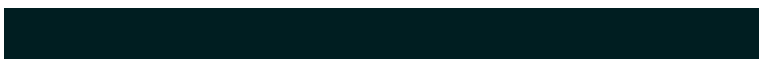
65.2494, -4.1376, -6.7808



33.5658, -4.0312, 0.6791



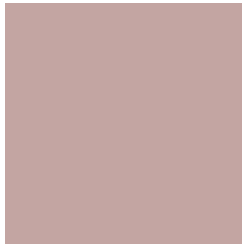
48.0909, -22.2274, -12.1269



10.2271, -4.9073, -2.1895

Previews

White Background



This preview shows how the HunterLab color 64.1257, 6.0340, 8.0148 looks on a white background.

Color Contrast Check

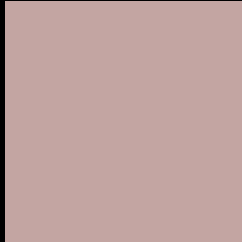
Large Text (above 18pt) WCAG AA × Fail

Any Text WCAG AA × Fail

Large Text (above 18pt) WCAG AAA × Fail

Any Text WCAG AAA × Fail

Black Background



This preview shows how the HunterLab color 64.1257, 6.0340, 8.0148 looks on a black background.

Color Contrast Check

Large Text (above 18pt) WCAG AA ✓ Pass

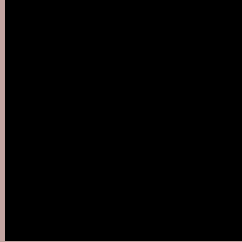
Any Text WCAG AA ✓ Pass

Large Text (above 18pt) WCAG AAA ✓ Pass

Any Text WCAG AAA ✓ Pass

If you want to check with other color combinations, try the [Color Contrast Checker](#).

HunterLab 64.1257, 6.0340, 8.0148 Background



This preview shows how black text looks on a background with the HunterLab color 64.1257, 6.0340, 8.0148.



This preview shows how white text looks on a background with the HunterLab color 64.1257, 6.0340,

Color Blindness Simulation

Color vision deficiency is a very complex topic, and I could not describe the different causes any better than Wikipedia does, so if you want to learn more, you should check out their [article about color blindness](#).

Dichromacy



Original Color

64.1257, 6.0340, 8.0148

Protanopia

64.1791, -2.4920, 6.6177

Deuteranopia

64.0996, 4.4949, 7.9589



Tritanopia

64.1867, 9.9229, 1.7844

Trichromacy



Original Color

64.1257, 6.0340, 8.0148

Protanomaly

64.2235, 0.6062, 7.1609

Deuteranomaly

64.2017, 4.8372, 8.0781

Tritanomaly

64.2082, 8.2636, 4.1326

Monochromacy



Original Color

64.1257, 6.0340, 8.0148

Achromatopsia

65.0590, -3.4714, 3.5348

Achromatomaly

64.7867, -0.1107, 5.1157

CSS Examples

Text

The CSS property to change the color of the text to HunterLab 64.1257, 6.0340, 8.0148 is called "color". The color property can be set on classes, ids or directly on the HTML element.

This example shows how text in the color `rgb(195, 165, 162)` looks like.

```
.text, #text, p{  
    color:rgb(195, 165, 162)  
}
```

If you want to add a text shadow in that color use the text-shadow property, you can generate a text shadow directly with our [CSS Text Shadow Generator](#).

Here you see how black text with a 4 pixel rgb(195, 165, 162) colored shadow looks like.

```
.shadow{ text-shadow: 4px 4px 2px rgb(195, 165, 162) }
```

Border

The CSS property to change the border of an element to HunterLab 64.1257, 6.0340, 8.0148 is called "border". The border property can be set on classes, ids or directly on the HTML element.

This example shows the color as border, it can be applied via the CSS property "border" or "border-color".

```
.border, #border, table{ border:4px solid rgb(195, 165, 162) }
```


If only the border color should be changed use the property `border-color`.

```
.border{ border-color:rgb(195, 165, 162) }
```

If you want to add a box shadow in that color use:

Here you see how a box with a 4 pixel `rgb(195, 165, 162)` colored shadow looks like.

```
.boxshadow{ -moz-box-shadow:4px 4px 4px  
4px rgb(195, 165, 162); -webkit-box-  
shadow:4px 4px 4px 4px rgb(195, 165, 162);  
box-shadow:4px 4px 4px 4px rgb(195, 165,  
162) }
```

Background

The CSS property to change the background color of an element to HunterLab 64.1257, 6.0340, 8.0148 is called "background". The background property can be set on classes, ids or directly on the HTML element.

```
.background, #background, body{  
background: rgb(195, 165, 162) }
```

If only the background color should be changed can be used:

```
.background{ background-color: rgb(195,  
165, 162) }
```

This example shows the color as background, it is applied via the CSS property "background".

To optimize and compress your CSS code, you can use our [online CSS compressor and optimizer](#) based on csstidy. If you want to create a linear or radial gradient as background or border, check our [CSS Gradient Generator](#).

Hey! You found this booklet interesting? Support Converting Colors with the new Membership Option!

The pro membership hides all ads, plus gives you double the colors in the color bucket, and more awesome pro features!

[Learn more, Memberships starting at \\$2.50/m!](#)

**Follow me
on Twitter!**

@ConvertingColor