

Converting Colors

HunterLab(64.3183, 2.8312,
8.8176)

Have a look what the booklet for
HunterLab(64.3183, 2.8312, 8.8176)
contains.

HunterLab(64.4131, 2.5109, 9.1225)	3
<i>Conversions</i>	4
<i>Details</i>	6
<i>Harmonies</i>	12
<i>Previews</i>	24
<i>Color Blindness Simulation</i>	28
<i>CSS Examples</i>	31

Color

**HunterLab(64.4131, 2.5109,
9.1225)**

Conversions

Conversions Part 1

Format	Color
Hex	BEA8A0
RGB	190, 168, 160
RGB Percent	75%, 66%, 63%
CMY	0.2549, 0.3412, 0.3725
CMYK	0.00, 0.12, 0.16, 0.25
HSL	16°, 19%, 69%
HSV	16°, 16%, 75%
XYZ	41.5830, 41.4905, 39.0745
YIQ	173.6660, 15.6800, 2.1760

Conversions

Conversions Part 2

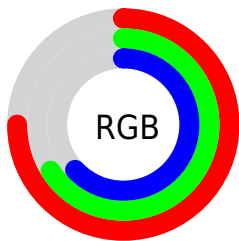
Format	Color
RYB	190, 171, 160
Decimal	12495008
CIELab	70.52, 6.65, 7.04
CIELCh	71, 9.686, 46.657
Yxy	41.4923, 0.3404, 0.3397
Android (android.graphics.Color)	4290685088 (0xFFBEA8A0)
YUV	173.6660, -6.7373, 14.3249
Hunter-Lab	64.4131, 2.5109, 9.1225

Details

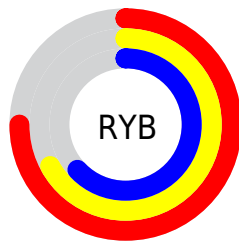
The HunterLab color $64.4131, 2.5109, 9.1225$ is a light color, and the websafe version is hex 999999 . A complement of this color would be $66.8178, -8.6866, -2.2065$, and the grayscale version is $64.9441, -3.4653, 3.5285$.

A 20% lighter version of the original color is $88.0090, 2.1785, 10.9579$, and $43.3926, 2.8758, 7.0201$ is the 20% darker color. If you saturate the color by 10%, you get $60.0049, 6.8749, 12.1956$, and if you desaturate by 10%, it is $69.0156, -1.5793, 5.8610$.

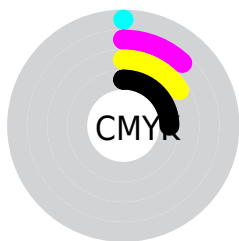
Distribution



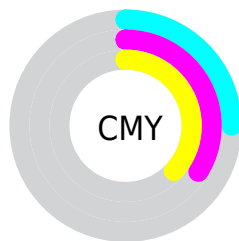
- Red (75%)
- Green (66%)
- Blue (63%)



- Red (75%)
- Yellow (67%)
- Blue (63%)



- Cyan (0%)
- Magenta (12%)
- Yellow (16%)
- Black (25%)



- Cyan (25%)
- Magenta (34%)
- Yellow (37%)

Brightness & Saturation Gradients

These gradients show how the HunterLab color 64.4131, 2.5109, 9.1225 changes by changing the brightness by 10 percent. The first figure shows a shift by +10% for each color and the second figure -10%.

Similar to the brightness gradients but the following saturation gradients show a change of the HunterLab color 64.4131, 2.5109, 9.1225 by changing the saturation by 10% instead.

■ 64.4131, 2.5109,
9.1225

■ 64.4131, 2.5109,
9.1225

187.7163, -1.6048,
18.4392

■ 53.5761, 2.7464,
8.1659

■ 87.9947, 1.8795,
11.0789

■ 43.4247, 2.9251,
7.2184

■ 100.6725, 1.4958,
12.0795

■ 34.0103, 3.0374,
6.2768

113.9067, 1.0703,
13.0965

■ 25.3960, 3.0729,
5.3338

127.6747, 0.6057,
14.1305

■ 17.6644, 3.0163,
4.3767

141.9568, 0.1041,
15.1816

■ 10.9310, 2.8438,
3.4452

156.7349, -0.4326,

■ 2.3981, 11.9518,

16.2500

1.6787

171.9929, -1.0027,
17.3359

0.0000, NaN, NaN

0.0000, NaN, NaN

■ 64.4131, 2.5109,
9.1225

■ 64.4131, 2.5109,
9.1225

■ 60.0049, 6.8749,
12.1956

■ 69.0156, -1.5793,
5.8610

■ 55.8124, 11.5385,
15.0334

■ 73.7864, -5.4148,
2.4417

■ 51.8675, 16.5076,
17.5809

■ 78.7087, -9.0241,
-1.1086

■ 48.2054, 21.7687,
19.7687

■ 83.7671, -12.4329,
-4.7700

■ 44.8662, 27.2723,

■ 88.9487, -15.6653,

21.5148

-8.5266

■ 41.8930, 32.9164,
22.7323

■ 93.5584, -22.6043,
-2.7005

■ 39.3292, 38.5301,
23.3458

■ 94.7034, -24.2828,
-1.2995

■ 37.2119, 43.8658,
23.3317

■ 36.4525, 45.9239,
23.2658

Harmonies

Analogous

The Analogous color harmony consists of three colors that are next to each other on the color wheel.



64.4145, 4.9222, 5.7852



64.4131, 2.5109, 9.1225



64.4145, -1.4635, 10.9005

Triad

The Triadic color harmony groups three colors that are evenly spaced from another and form a triangle on the color wheel.



64.4145, 2.5089, 9.1235



64.4145, -11.5183, 5.3478



64.4145, -0.9814, -4.7470

Complementary

The Complementary color scheme is a pair of colors which are on the opposite of each other on the color wheel.



64.4131, 2.5109, 9.1225



66.8178, -8.6866, -2.2065

Split Complementary

Split-complementary colors differ from the complementary color scheme. The scheme consists of three colors, the original color and two neighbors of the complement color.



64.4145, -5.3938, -4.8839



64.4131, 2.5109, 9.1225



64.4145, -11.3971, 1.1409

Square

The Square scheme is like the rectangle color scheme, but the four colors are evenly spaced on the color wheel.



64.4145, 2.5089, 9.1235



64.4145, -9.5170, 8.8220



64.4145, -9.1815, -2.6674



64.4145, 2.8701, -2.3050

Rectangle

The Rectangle color scheme consists of four colors that form a rectangle on the color wheel.



64.4131, 2.5109, 9.1225



64.4145, -4.4246, 11.0443



64.4145, -9.1815, -2.6674



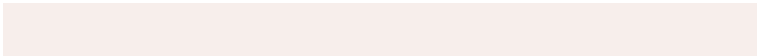
64.4145, -2.4503, -5.0696

Sweetspot

The Sweet Spot groups the original color and five complimentary colors.



64.4145, 2.5089, 9.1235



93.3533, -2.5024, 7.5703



62.8225, 10.1071, -2.8800



43.5351, -0.9954, 3.6979



98.8636, -5.2751, 5.3714



45.2661, -2.4153, 2.4594

Same Dimension

The Same Dimension uses a secret algorithm to generate beautiful new colors.



64.4145, 2.5089, 9.1235



84.5922, 5.4011, 13.7687



68.8133, -4.9542, 13.6602



31.5267, -0.0723, 3.2959



29.9130, 36.8905, 19.0781



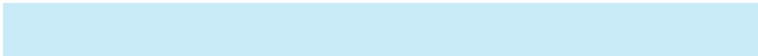
6.7997, 4.9464, 4.2765

Inverse Universe

The Inverse Universe completely reimagines the original color for something new.



66.8178, -8.6866, -2.2065



88.5292, -12.9574, -4.7981



62.3131, -1.3097, -7.9781



32.1980, -3.1957, 0.1324



38.6583, -10.3206, -26.0403



8.2914, -2.9406, -4.0157

Previews

White Background



This preview shows how the HunterLab color 64.4131, 2.5109, 9.1225 looks on a white background.

Color Contrast Check

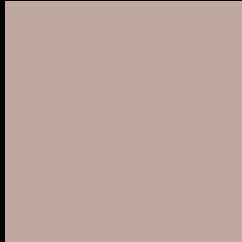
Large Text (above 18pt) WCAG AA × Fail

Any Text WCAG AA × Fail

Large Text (above 18pt) WCAG AAA × Fail

Any Text WCAG AAA × Fail

Black Background



This preview shows how the HunterLab color 64.4131, 2.5109, 9.1225 looks on a black background.

Color Contrast Check

Large Text (above 18pt) WCAG AA ✓ Pass

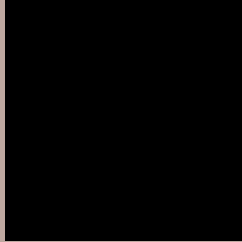
Any Text WCAG AA ✓ Pass

Large Text (above 18pt) WCAG AAA ✓ Pass

Any Text WCAG AAA ✓ Pass

If you want to check with other color combinations, try the [Color Contrast Checker](#).

HunterLab 64.4131, 2.5109, 9.1225 Background



This preview shows how black text looks on a background with the HunterLab color 64.4131, 2.5109, 9.1225.



This preview shows how white text looks on a background with the HunterLab color 64.4131, 2.5109,

Color Blindness Simulation

Color vision deficiency is a very complex topic, and I could not describe the different causes any better than Wikipedia does, so if you want to learn more, you should check out their [article about color blindness](#).

Dichromacy



Original Color

64.4131, 2.5109, 9.1225

Protanopia

64.4815, -3.1258, 8.2482

Deuteranopia

64.5328, 4.3807, 9.2857



Tritanopia

64.2893, 7.5204, 0.9022

Trichromacy



Original Color

64.4131, 2.5109, 9.1225

Protanomaly

64.5322, -1.4943, 8.7592

Deuteranomaly

64.4305, 4.0371, 9.1682

Tritanomaly

64.2566, 5.5372, 4.1414

Monochromacy



Original Color

64.4131, 2.5109, 9.1225

Achromatopsia

65.0590, -3.4714, 3.5348

Achromatomaly

64.8636, -1.4079, 5.6333

CSS Examples

Text

The CSS property to change the color of the text to HunterLab 64.4131, 2.5109, 9.1225 is called "color". The color property can be set on classes, ids or directly on the HTML element.

This example shows how text in the color `rgb(190, 168, 160)` looks like.

```
.text, #text, p{  
    color:rgb(190, 168, 160)  
}
```

If you want to add a text shadow in that color use the text-shadow property, you can generate a text shadow directly with our [CSS Text Shadow Generator](#).

Here you see how black text with a 4 pixel rgb(190, 168, 160) colored shadow looks like.

```
.shadow{ text-shadow: 4px 4px 2px rgb(190, 168, 160) }
```

Border

The CSS property to change the border of an element to HunterLab 64.4131, 2.5109, 9.1225 is called "border". The border property can be set on classes, ids or directly on the HTML element.

This example shows the color as border, it can be applied via the CSS property "border" or "border-color".

```
.border, #border, table{ border:4px solid rgb(190, 168, 160) }
```


If only the border color should be changed use the property `border-color`.

```
.border{ border-color:rgb(190, 168, 160) }
```

If you want to add a box shadow in that color use:

Here you see how a box with a 4 pixel `rgb(190, 168, 160)` colored shadow looks like.

```
.boxshadow{ -moz-box-shadow:4px 4px 4px  
4px rgb(190, 168, 160); -webkit-box-  
shadow:4px 4px 4px 4px rgb(190, 168, 160);  
box-shadow:4px 4px 4px 4px rgb(190, 168,  
160) }
```

Background

The CSS property to change the background color of an element to HunterLab 64.4131, 2.5109, 9.1225 is called "background". The background property can be set on classes, ids or directly on the HTML element.

```
.background, #background, body{  
background: rgb(190, 168, 160) }
```

If only the background color should be changed can be used:

```
.background{ background-color: rgb(190,  
168, 160) }
```

This example shows the color as background, it is applied via the CSS property "background".

To optimize and compress your CSS code, you can use our [online CSS compressor and optimizer](#) based on csstidy. If you want to create a linear or radial gradient as background or border, check our [CSS Gradient Generator](#).

Hey! You found this booklet interesting? Support Converting Colors with the new Membership Option!

The pro membership hides all ads, plus gives you double the colors in the color bucket, and more awesome pro features!

[Learn more, Memberships starting at \\$2.50/m!](#)

**Follow me
on Twitter!**

@ConvertingColor