

Converting Colors

HunterLab(64.3332, 6.9333,
4.3333)

Have a look what the booklet for
HunterLab(64.3332, 6.9333, 4.3333)
contains.

HunterLab(64.2805, 7.0652, 4.1962)	3
<i>Conversions</i>	4
<i>Details</i>	6
<i>Harmonies</i>	12
<i>Previews</i>	24
<i>Color Blindness Simulation</i>	28
<i>CSS Examples</i>	31

Color

**HunterLab(64.2805, 7.0652,
4.1962)**

Conversions

Conversions Part 1

Format	Color
Hex	C2A5AB
RGB	194, 165, 171
RGB Percent	76%, 65%, 67%
CMY	0.2392, 0.3529, 0.3294
CMYK	0.00, 0.15, 0.12, 0.24
HSL	348°, 19%, 70%
HSV	348°, 15%, 76%
XYZ	43.0539, 41.3198, 44.2343
YIQ	174.3550, 15.3580, 8.0140

Conversions

Conversions Part 2

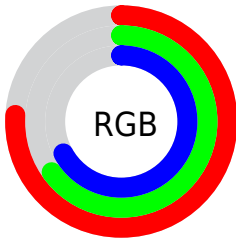
Format	Color
RYB	194, 165, 171
Decimal	12756395
CIELab	70.40, 11.58, 0.84
CIElCh	70, 11.614, 4.149
Yxy	41.3217, 0.3348, 0.3213
Android (android.graphics.Color)	4290946475 (0xFFC2A5AB)
YUV	174.3550, -1.6540, 17.2287
Hunter-Lab	64.2805, 7.0652, 4.1962

Details

The HunterLab color $64.2805, 7.0652, 4.1962$ is a light color, and the websafe version is hex $CC9999$. A complement of this color would be $70.8624, -13.4579, 3.6201$, and the grayscale version is $65.2098, -3.4794, 3.5430$.

A 20% lighter version of the original color is $87.8559, 6.9712, 5.7016$, and $43.2639, 7.0119, 2.8640$ is the 20% darker color. If you saturate the color by 10%, you get $58.5600, 14.6741, 4.6704$, and if you desaturate by 10%, it is $70.3424, -0.3374, 4.0003$.

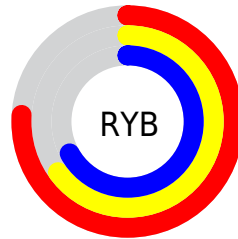
Distribution



Red (76%)

Green (65%)

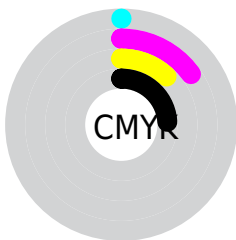
Blue (67%)



Red (76%)

Yellow (65%)

Blue (67%)

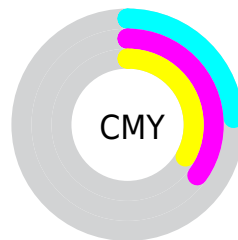


Cyan (0%)

Magenta (15%)

Yellow (12%)

Black (24%)



Cyan (24%)

Magenta (35%)

Yellow (33%)

Brightness & Saturation Gradients

These gradients show how the HunterLab color 64.2805, 7.0652, 4.1962 changes by changing the brightness by 10 percent. The first figure shows a shift by +10% for each color and the second figure -10%.

Similar to the brightness gradients but the following saturation gradients show a change of the HunterLab color 64.2805, 7.0652, 4.1962 by changing the saturation by 10% instead.

64.2805, 7.0652,
4.1962

64.2805, 7.0652,
4.1962

187.5269, 4.7479,
11.2082

53.4514, 7.0554,
3.5656

87.8476, 6.8890,
5.5575

43.3084, 6.9743,
2.9685

100.5186, 6.7182,
6.2832

33.9031, 6.8095,
2.4079

113.7463, 6.4974,
7.0376

25.2988, 6.5469,
1.8863

127.5081, 6.2300,
7.8198

17.5783, 6.1663,
1.4066

141.7842, 5.9190,
8.6287

10.8577, 5.6376,
0.9721

156.5565, 5.5669,

2.1062, 23.8534,

9.4636

1.4743

171.8089, 5.1759,
10.3237

0.0000, NaN, NaN

0.0000, NaN, NaN

■ 64.2805, 7.0652,
4.1962

■ 64.2805, 7.0652,
4.1962

■ 58.5600, 14.6741,
4.6704

■ 70.3424, -0.3374,
4.0003

■ 53.2387, 22.4564,
5.4706

■ 76.6917, -7.5265,
4.0337

■ 48.3948, 30.3024,
6.6481

■ 83.2903, -14.5211,
4.2588

■ 44.1195, 37.9915,
8.2379

■ 90.1067, -21.3451,
4.6438

■ 40.5135, 45.1486,

■ 94.7434, -24.6065,

10.2362

2.4044

■ 37.6734, 51.2424,
12.5679

■ 94.9786, -23.2709,
-0.9405

■ 35.6655, 55.6890,
15.0648

■ 34.4889, 58.0935,
17.4811

■ 34.0932, 58.8374,
18.5284

Harmonies

Analogous

The Analogous color harmony consists of three colors that are next to each other on the color wheel.



64.2819, 6.0092, -0.8788



64.2805, 7.0652, 4.1962



64.2819, 5.2307, 8.7126

Triad

The Triadic color harmony groups three colors that are evenly spaced from another and form a triangle on the color wheel.



64.2819, 7.0633, 4.1973



64.2819, -9.0614, 11.0247



64.2819, -7.8222, -5.8632

Complementary

The Complementary color scheme is a pair of colors which are on the opposite of each other on the color wheel.



64.2805, 7.0652, 4.1962



70.8624, -13.4579, 3.6201

Split Complementary

Split-complementary colors differ from the complementary color scheme. The scheme consists of three colors, the original color and two neighbors of the complement color.



64.2819, -11.6616, -2.1915



64.2805, 7.0652, 4.1962



64.2819, -12.3605, 7.5891

Square

The Square scheme is like the rectangle color scheme, but the four colors are evenly spaced on the color wheel.



64.2819, 7.0633, 4.1973



64.2819, -4.1699, 12.4467



64.2819, -13.2969, 2.7929



64.2819, -2.6935, -6.9542

Rectangle

The Rectangle color scheme consists of four colors that form a rectangle on the color wheel.



64.2805, 7.0652, 4.1962



64.2819, 2.6525, 10.8797



64.2819, -13.2969, 2.7929



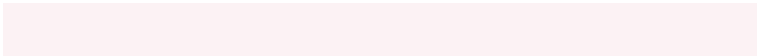
64.2819, -9.3009, -4.8760

Sweetspot

The Sweet Spot groups the original color and five complimentary colors.



64.2819, 7.0633, 4.1973



95.4212, -1.3198, 5.3768



64.3915, 8.9088, -7.1621



44.3529, -0.2659, 2.5192

0.0000, NaN, NaN



46.2646, -2.4686, 2.5136

Same Dimension

The Same Dimension uses a secret algorithm to generate beautiful new colors.



64.2819, 7.0633, 4.1973



83.8978, 12.8975, 5.8176



66.4514, 1.9719, 9.2186



31.7981, 1.3672, 1.9074



27.6619, 47.7733, 14.7624



5.8381, 10.2553, 1.7777

Inverse Universe

The Inverse Universe completely reimagines the original color for something new.



64.2819, 7.0633, 4.1973



83.8978, 12.8975, 5.8176



68.4998, -8.4243, -2.1153



31.7981, 1.3672, 1.9074



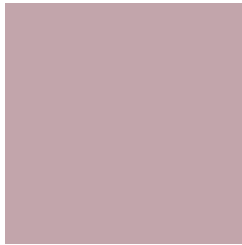
27.6619, 47.7733, 14.7624



5.8381, 10.2553, 1.7777

Previews

White Background



This preview shows how the HunterLab color 64.2805, 7.0652, 4.1962 looks on a white background.

Color Contrast Check

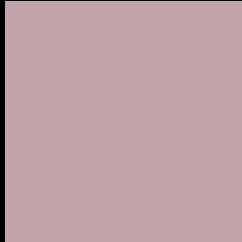
Large Text (above 18pt) WCAG AA × Fail

Any Text WCAG AA × Fail

Large Text (above 18pt) WCAG AAA × Fail

Any Text WCAG AAA × Fail

Black Background



This preview shows how the HunterLab color 64.2805, 7.0652, 4.1962 looks on a black background.

Color Contrast Check

Large Text (above 18pt) WCAG AA ✓ Pass

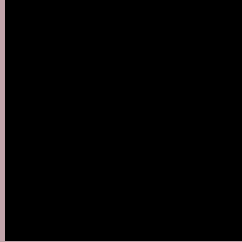
Any Text WCAG AA ✓ Pass

Large Text (above 18pt) WCAG AAA ✓ Pass

Any Text WCAG AAA ✓ Pass

If you want to check with other color combinations, try the [Color Contrast Checker](#).

HunterLab 64.2805, 7.0652, 4.1962 Background



This preview shows how black text looks on a background with the HunterLab color 64.2805, 7.0652, 4.1962.



This preview shows how white text looks on a background with the HunterLab color 64.2805, 7.0652,

Color Blindness Simulation

Color vision deficiency is a very complex topic, and I could not describe the different causes any better than Wikipedia does, so if you want to learn more, you should check out their [article about color blindness](#).

Dichromacy



Original Color

64.2805, 7.0652, 4.1962

Protanopia

64.2922, -1.5116, 2.1882

Deuteranopia

64.3401, 4.3580, 4.2184



Tritanopia

64.2863, 8.8851, 1.4063

Trichromacy



Original Color

64.2805, 7.0652, 4.1962

Protanomaly

64.3250, 1.5364, 2.7537

Deuteranomaly

64.2566, 5.5372, 4.1414

Tritanomaly

64.2247, 8.5592, 2.2836

Monochromacy



Original Color

64.2805, 7.0652, 4.1962

Achromatopsia

65.0590, -3.4714, 3.5348

Achromatomaly

64.7817, 0.0495, 3.7354

CSS Examples

Text

The CSS property to change the color of the text to HunterLab 64.2805, 7.0652, 4.1962 is called "color". The color property can be set on classes, ids or directly on the HTML element.

This example shows how text in the color `rgb(194, 165, 171)` looks like.

```
.text, #text, p{  
    color:rgb(194, 165, 171)  
}
```

If you want to add a text shadow in that color use the text-shadow property, you can generate a text shadow directly with our [CSS Text Shadow Generator](#).

Here you see how black text with a 4 pixel rgb(194, 165, 171) colored shadow looks like.

```
.shadow{ text-shadow: 4px 4px 2px rgb(194, 165, 171) }
```

Border

The CSS property to change the border of an element to HunterLab 64.2805, 7.0652, 4.1962 is called "border".

The border property can be set on classes, ids or directly on the HTML element.

This example shows the color as border, it can be applied via the CSS property "border" or "border-color".

```
.border, #border, table{ border:4px solid rgb(194, 165, 171) }
```


If only the border color should be changed use the property `border-color`.

```
.border{ border-color:rgb(194, 165, 171) }
```

If you want to add a box shadow in that color use:

Here you see how a box with a 4 pixel `rgb(194, 165, 171)` colored shadow looks like.

```
.boxshadow{ -moz-box-shadow:4px 4px 4px  
4px rgb(194, 165, 171); -webkit-box-  
shadow:4px 4px 4px 4px rgb(194, 165, 171);  
box-shadow:4px 4px 4px 4px rgb(194, 165,  
171) }
```

Background

The CSS property to change the background color of an element to HunterLab 64.2805, 7.0652, 4.1962 is called "background". The background property can be set on classes, ids or directly on the HTML element.

```
.background, #background, body{  
background: rgb(194, 165, 171) }
```

If only the background color should be changed can be used:

```
.background{ background-color: rgb(194,  
165, 171) }
```

This example shows the color as background, it is applied via the CSS property "background".

To optimize and compress your CSS code, you can use our [online CSS compressor and optimizer](#) based on csstidy. If you want to create a linear or radial gradient as background or border, check our [CSS Gradient Generator](#).

Hey! You found this booklet interesting? Support Converting Colors with the new Membership Option!

The pro membership hides all ads, plus gives you double the colors in the color bucket, and more awesome pro features!

[Learn more, Memberships starting at \\$2.50/m!](#)

**Follow me
on Twitter!**

@ConvertingColor