

Converting Colors

HunterLab(64.3545, 94.4877,
21.1807)

Have a look what the booklet for
HunterLab(64.3545, 94.4877,
21.1807) contains.

HunterLab(52.4983, 70.3890, 8.9275)	3
<i>Conversions</i>	4
<i>Details</i>	6
<i>Harmonies</i>	12
<i>Previews</i>	24
<i>Color Blindness Simulation</i>	28
<i>CSS Examples</i>	31

Color

**HunterLab(52.4983, 70.3890,
8.9275)**

Conversions

Conversions Part 1

Format	Color
Hex	FF4884
RGB	255, 72, 132
RGB Percent	100%, 28%, 52%
CMY	0.0000, 0.7176, 0.4824
CMYK	0.00, 0.72, 0.48, 0.00
HSL	340°, 100%, 64%
HSV	340°, 72%, 100%
XYZ	47.7223, 27.5607, 24.6344
YIQ	133.5570, 89.8080, 57.4560

Conversions

Conversions Part 2

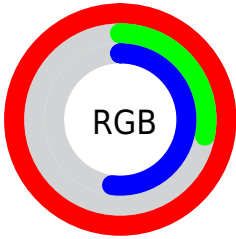
Format	Color
R_{YB}	255, 72, 132
Decimal	16730244
CIE _{Lab}	59.49, 72.01, 8.29
CIE _{LCh}	59, 72.487, 6.566
Yxy	27.5623, 0.4776, 0.2758
Android (android.graphics.Color)	4294920324 (0xFFFF4884)
YUV	133.5570, -0.7676, 106.5055
Hunter-Lab	52.4983, 70.3890, 8.9275

Details

The HunterLab color **52.4983, 70.3890, 8.9275** is a light color, and the websafe version is hex **FF6699**. The color can be described as light washed rose. A complement of this color would be **87.6577, -55.0768, 18.1240**, and the grayscale version is **48.6311, -2.5948, 2.6422**.

A 20% lighter version of the original color is **64.4499, 48.9141, -1.6542**, and **34.3962, 60.7202, 8.1514** is the 20% darker color. If you saturate the color by 10%, you get **49.4862, 76.8842, 12.4566**, and if you desaturate by 10%, it is **56.6382, 61.6085, 6.1518**.

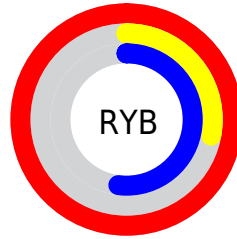
Distribution



Red (100%)

Green (28%)

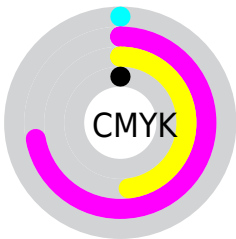
Blue (52%)



Red (100%)

Yellow (28%)

Blue (52%)

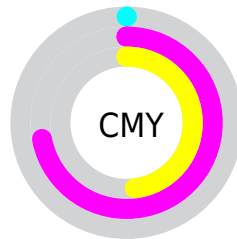


Cyan (0%)

Magenta (72%)

Yellow (48%)

Black (0%)



Cyan (0%)

Magenta (72%)

Yellow (48%)

Brightness & Saturation Gradients

These gradients show how the HunterLab color 52.4983, 70.3890, 8.9275 changes by changing the brightness by 10 percent. The first figure shows a shift by +10% for each color and the second figure -10%.

Similar to the brightness gradients but the following saturation gradients show a change of the HunterLab color 52.4983, 70.3890, 8.9275 by changing the saturation by 10% instead.

52.4983, 70.3890,
8.9275

52.4983, 70.3890,
8.9275

170.4023, 87.5918,
18.5861

42.4216, 68.0598,
7.9079

74.6892, 74.8351,
10.9871

33.0864, 65.7299,
6.8851

86.7236, 76.9287,
12.0309

24.5586, 63.5166,
5.8505

99.3428, 78.9286,
13.0871

16.9237, 61.7251,
4.7865

112.5208, 80.8356,
14.1570

10.3015, 61.2549,
3.9614

126.2350, 82.6520,
15.2413

0.0000, INF, NaN

0.0000, INF, NaN

140.4650, 84.3812,

16.3407

0.0000, NaN, NaN

155.1929, 86.0266,
17.4555

0.0000, NaN, NaN

■ 52.4983, 70.3890,
8.9275

■ 52.4983, 70.3890,
8.9275

■ 49.4862, 76.8842,
12.4566

■ 56.6382, 61.6085,
6.1518

■ 47.6165, 80.4883,
16.4482

■ 61.8001, 51.3825,
4.2393

■ 46.7907, 81.4850,
19.7356

■ 67.8509, 40.4268,
3.1684

■ 74.6548, 29.2397,
2.8423

■ 82.0911, 18.1116,
3.1420

90.0590, 7.1856,
3.9537

98.4770, -3.4851,
5.1805

100.0000, -5.3358,
5.4332

Harmonies

Analogous

The Analogous color harmony consists of three colors that are next to each other on the color wheel.



52.4998, 63.7359, -25.0183



52.4983, 70.3890, 8.9275



52.4998, 54.0702, 26.6374

Triad

The Triadic color harmony groups three colors that are evenly spaced from another and form a triangle on the color wheel.



52.4998, 70.3843, 8.9288



52.4998, -33.7683, 31.0277



52.4998, -24.4421, -80.1671

Complementary

The Complementary color scheme is a pair of colors which are on the opposite of each other on the color wheel.



52.4983, 70.3890, 8.9275



87.6577, -55.0768, 18.1240

Split Complementary

Split-complementary colors differ from the complementary color scheme. The scheme consists of three colors, the original color and two neighbors of the complement color.



52.4998, -42.5699, -43.3069



52.4983, 70.3890, 8.9275



52.4998, -47.0177, 20.7580

Square

The Square scheme is like the rectangle color scheme, but the four colors are evenly spaced on the color wheel.



52.4998, 70.3843, 8.9288



52.4998, -9.4385, 33.7282



52.4998, -49.8181, -4.0380



52.4998, 4.1771, -90.2600

Rectangle

The Rectangle color scheme consists of four colors that form a rectangle on the color wheel.



52.4983, 70.3890, 8.9275



52.4998, 34.1841, 31.5529



52.4998, -49.8181, -4.0380



52.4998, -31.7409, -69.7620

Sweetspot

The Sweet Spot groups the original color and five complimentary colors.



52.4998, 70.3843, 8.9288



81.9059, 18.3769, 3.1284



48.2972, 72.9877, -85.1026



36.9360, 9.8913, 1.3858

0.0000, NaN, NaN



46.2646, -2.4686, 2.5136

Same Dimension

The Same Dimension uses a secret algorithm to generate beautiful new colors.



52.4998, 70.3843, 8.9288



48.5569, 78.7845, 14.1150



55.9744, 52.6008, 28.9157



42.5268, 2.2004, 1.9418



33.8590, 59.0345, 13.7401



10.6555, 18.7524, 2.9738

Inverse Universe

The Inverse Universe completely reimagines the original color for something new.



52.4998, 70.3843, 8.9288



48.5569, 78.7845, 14.1150



78.8541, -30.4381, -23.0783



42.5268, 2.2004, 1.9418



33.8590, 59.0345, 13.7401



10.6555, 18.7524, 2.9738

Previews

White Background



This preview shows how the HunterLab color 52.4983, 70.3890, 8.9275 looks on a white background.

Color Contrast Check

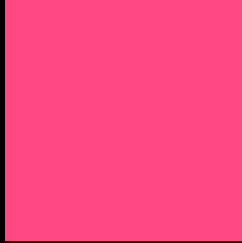
Large Text (above 18pt) WCAG AA ✓ Pass

Any Text WCAG AA × Fail

Large Text (above 18pt) WCAG AAA × Fail

Any Text WCAG AAA × Fail

Black Background



This preview shows how the HunterLab color 52.4983, 70.3890, 8.9275 looks on a black background.

Color Contrast Check

Large Text (above 18pt) WCAG AA ✓ Pass

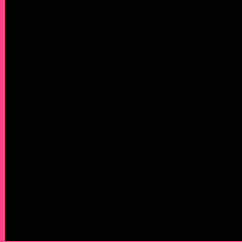
Any Text WCAG AA ✓ Pass

Large Text (above 18pt) WCAG AAA ✓ Pass

Any Text WCAG AAA × Fail

If you want to check with other color combinations, try the [Color Contrast Checker](#).

HunterLab 52.4983, 70.3890, 8.9275 Background



This preview shows how black text looks on a background with the HunterLab color 52.4983, 70.3890, 8.9275.



This preview shows how white text looks on a background with the HunterLab color 52.4983, 70.3890,

Color Blindness Simulation

Color vision deficiency is a very complex topic, and I could not describe the different causes any better than Wikipedia does, so if you want to learn more, you should check out their [article about color blindness](#).

Dichromacy



Original Color

52.4983, 70.3890, 8.9275

Protanopia

52.6209, 1.2154, -10.9651

Deuteranopia

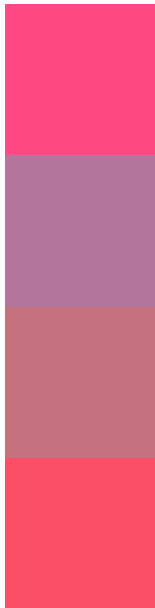
52.5417, 3.7901, 11.2967



Tritanopia

52.3623, 61.3675, 23.1300

Trichromacy



Original Color

52.4983, 70.3890, 8.9275

Protanomaly

49.9807, 25.0436, -6.6034

Deuteranomaly

50.5438, 28.3448, 8.4868

Tritanomaly

52.2596, 64.5740, 18.7744

Monochromacy



Original Color

52.4983, 70.3890, 8.9275

Achromatopsia

48.8260, -2.6052, 2.6528

Achromatomaly

47.4629, 23.2892, 1.9344

CSS Examples

Text

The CSS property to change the color of the text to HunterLab 52.4983, 70.3890, 8.9275 is called "color". The color property can be set on classes, ids or directly on the HTML element.

This example shows how text in the color `rgb(255, 72, 132)` looks like.

```
.text, #text, p{  
    color:rgb(255, 72, 132)  
}
```

If you want to add a text shadow in that color use the text-shadow property, you can generate a text shadow directly with our [CSS Text Shadow Generator](#).

Here you see how black text with a 4 pixel rgb(255, 72, 132) colored shadow looks like.

```
.shadow{ text-shadow: 4px 4px 2px rgb(255, 72, 132) }
```

Border

The CSS property to change the border of an element to HunterLab 52.4983, 70.3890, 8.9275 is called "border". The border property can be set on classes, ids or directly on the HTML element.

This example shows the color as border, it can be applied via the CSS property "border" or "border-color".

```
.border, #border, table{ border:4px solid rgb(255, 72, 132) }
```


If only the border color should be changed use the property border-color.

```
.border{ border-color:rgb(255, 72, 132) }
```

If you want to add a box shadow in that color use:

Here you see how a box with a 4 pixel rgb(255, 72, 132) colored shadow looks like.

```
.boxshadow{ -moz-box-shadow:4px 4px 4px  
4px rgb(255, 72, 132); -webkit-box-  
shadow:4px 4px 4px 4px rgb(255, 72, 132);  
box-shadow:4px 4px 4px 4px rgb(255, 72,  
132) }
```

Background

The CSS property to change the background color of an element to HunterLab 52.4983, 70.3890, 8.9275 is called "background". The background property can be set on classes, ids or directly on the HTML element.

```
.background, #background, body{  
background: rgb(255, 72, 132) }
```

If only the background color should be changed can be used:

```
.background{ background-color: rgb(255, 72,  
132) }
```

This example shows the color as background, it is applied via the CSS property "background".

To optimize and compress your CSS code, you can use our [online CSS compressor and optimizer](#) based on csstidy. If you want to create a linear or radial gradient as background or border, check our [CSS Gradient Generator](#).

Hey! You found this booklet interesting? Support Converting Colors with the new Membership Option!

The pro membership hides all ads, plus gives you double the colors in the color bucket, and more awesome pro features!

[Learn more, Memberships starting at \\$2.50/m!](#)

**Follow me
on Twitter!**

@ConvertingColor