

Converting Colors

HunterLab(64.4092, -2.2549,
1.8394)

Have a look what the booklet for
HunterLab(64.4092, -2.2549, 1.8394)
contains.

HunterLab(64.4390, -2.4573, 1.8718)	3
<i>Conversions</i>	4
<i>Details</i>	6
<i>Harmonies</i>	12
<i>Previews</i>	24
<i>Color Blindness Simulation</i>	28
<i>CSS Examples</i>	31

Color

**HunterLab(64.4390, -2.4573,
1.8718)**

Conversions

Conversions Part 1

Format	Color
Hex	ADACB0
RGB	173, 172, 176
RGB Percent	68%, 67%, 69%
CMY	0.3216, 0.3255, 0.3098
CMYK	0.02, 0.02, 0.00, 0.31
HSL	255°, 2%, 68%
HSV	255°, 2%, 69%
XYZ	39.8226, 41.5238, 46.9903
YIQ	172.7550, -0.6880, 1.4560

Conversions

Conversions Part 2

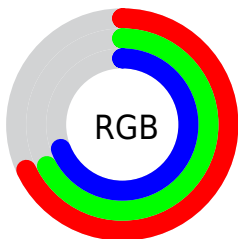
Format	Color
RYB	173, 172, 176
Decimal	11381936
CIELab	70.54, 1.11, -1.93
CIElCh	71, 2.228, 300.016
Yxy	41.5256, 0.3103, 0.3236
Android (android.graphics.Color)	4289572016 (0xFFADACB0)
YUV	172.7550, 1.5998, 0.2149
Hunter-Lab	64.4390, -2.4573, 1.8718

Details

The HunterLab color $64.4390, -2.4573, 1.8718$ is a light color, and the websafe version is hex 999999 . A complement of this color would be $65.6843, -4.4727, 5.1639$, and the grayscale version is $64.5374, -3.4436, 3.5064$.

A 20% lighter version of the original color is $87.8967, -3.4808, 2.6035$, and $43.5352, -1.4013, 0.8321$ is the 20% darker color. If you saturate the color by 10%, you get $58.1649, 2.2906, -5.9883$, and if you desaturate by 10%, it is $70.8913, -7.0631, 9.2063$.

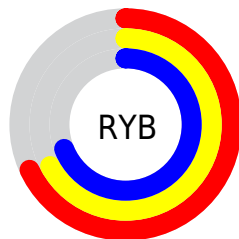
Distribution



Red (68%)

Green (67%)

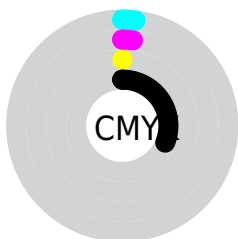
Blue (69%)



Red (68%)

Yellow (67%)

Blue (69%)

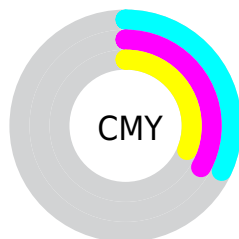


Cyan (2%)

Magenta (2%)

Yellow (0%)

Black (31%)



Cyan (32%)

Magenta (33%)

Yellow (31%)

Brightness & Saturation Gradients

These gradients show how the HunterLab color 64.4390, -2.4573, 1.8718 changes by changing the brightness by 10 percent. The first figure shows a shift by +10% for each color and the second figure -10%.

Similar to the brightness gradients but the following saturation gradients show a change of the HunterLab color 64.4390, -2.4573, 1.8718 by changing the saturation by 10% instead.

■ 64.4390, -2.4573,
1.8718

■ 64.4390, -2.4573,
1.8718

187.7532, -8.6262,
7.9003

■ 53.6004, -1.9380,
1.3776

■ 88.0234, -3.6113,
2.9818

■ 43.4473, -1.4578,
0.9259

100.7025, -4.2387,
3.5907

■ 34.0312, -1.0218,
0.5219

113.9379, -4.8980,
4.2332

■ 25.4150, -0.6347,
0.1712

127.7072, -5.5875,
4.9077

■ 17.6812, -0.3030,
-0.1187

141.9904, -6.3062,
5.6128

■ 10.9453, -0.0365,
-0.3362

156.7696, -7.0529,

■ 2.4510, 1.8509,

6.3473

-3.1298

172.0288, -7.8265,
7.1101

0.0000, NaN, NaN

0.0000, NaN, NaN

■ 64.4390, -2.4573,
1.8718

■ 64.4390, -2.4573,
1.8718

■ 58.1649, 2.2906,
-5.9883

■ 70.8913, -7.0631,
9.2063

■ 52.0911, 7.2289,
-14.5265

■ 77.4977, -11.5572,
16.1269

■ 46.2535, 12.4083,
-23.9333

■ 84.2437, -15.9688,
22.7229

■ 40.6995, 17.8851,
-34.4448

■ 91.1167, -20.3193,
29.0624

■ 35.4949, 23.7031,

■ 96.4435, -22.1741,

-46.3240

33.7885

■ 30.7322, 29.8491,
-59.7841

■ 97.6719, -17.7145,
34.9411

■ 26.5401, 36.1491,
-74.7735

■ 97.9360, -16.7633,
35.1877

■ 23.0871, 42.0869,
-90.5212

■ 20.5565, 46.6575,
-104.9864

Harmonies

Analogous

The Analogous color harmony consists of three colors that are next to each other on the color wheel.



64.4404, -3.4413, 1.6159



64.4390, -2.4573, 1.8718



64.4404, -1.7360, 2.5692

Triad

The Triadic color harmony groups three colors that are evenly spaced from another and form a triangle on the color wheel.



64.4404, -2.4588, 1.8729



64.4404, -2.4597, 5.1012



64.4404, -5.3894, 3.5071

Complementary

The Complementary color scheme is a pair of colors which are on the opposite of each other on the color wheel.



64.4390, -2.4573, 1.8718



65.6843, -4.4727, 5.1639

Split Complementary

Split-complementary colors differ from the complementary color scheme. The scheme consists of three colors, the original color and two neighbors of the complement color.



64.4404, -5.1301, 4.4322



64.4390, -2.4573, 1.8718



64.4404, -3.4424, 5.3438

Square

The Square scheme is like the rectangle color scheme, but the four colors are evenly spaced on the color wheel.



64.4404, -2.4588, 1.8729



64.4404, -1.7365, 4.4331



64.4404, -4.4190, 5.1007



64.4404, -5.1296, 2.5683

Rectangle

The Rectangle color scheme consists of four colors that form a rectangle on the color wheel.



64.4390, -2.4573, 1.8718



64.4404, -1.5008, 3.1837



64.4404, -4.4190, 5.1007



64.4404, -5.3601, 3.8300

Sweetspot

The Sweet Spot groups the original color and five complimentary colors.



64.4404, -2.4588, 1.8729



87.8596, -4.0982, 3.7955



65.2628, -4.2754, 2.8241



40.9233, -1.9240, 1.7930



94.3401, -5.0338, 5.1257



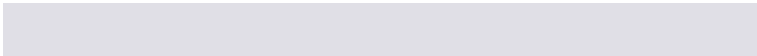
41.3092, -2.2042, 2.2444

Same Dimension

The Same Dimension uses a secret algorithm to generate beautiful new colors.



64.4404, -2.4588, 1.8729



86.1136, -2.8191, 1.7227



64.6125, -1.8636, 2.0900



30.5544, -0.8538, 0.3657



16.4780, 42.1761, -97.5451



3.3677, 7.9161, -14.4802

Inverse Universe

The Inverse Universe completely reimagines the original color for something new.



64.6778, -1.6990, 2.6436



86.5445, -1.4433, 3.1275



65.5149, -5.0650, 4.9581



30.7431, -0.2527, 0.9829



28.2952, 52.8170, -15.5189



5.1047, 9.6722, -3.9131

Previews

White Background



This preview shows how the HunterLab color 64.4390, -2.4573, 1.8718 looks on a white background.

Color Contrast Check

Large Text (above 18pt) WCAG AA × Fail

Any Text WCAG AA × Fail

Large Text (above 18pt) WCAG AAA × Fail

Any Text WCAG AAA × Fail

Black Background



This preview shows how the HunterLab color 64.4390, -2.4573, 1.8718 looks on a black background.

Color Contrast Check

Large Text (above 18pt) WCAG AA ✓ Pass

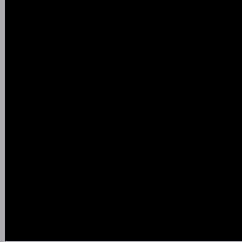
Any Text WCAG AA ✓ Pass

Large Text (above 18pt) WCAG AAA ✓ Pass

Any Text WCAG AAA ✓ Pass

If you want to check with other color combinations, try the [Color Contrast Checker](#).

HunterLab 64.4390, -2.4573, 1.8718 Background



This preview shows how black text looks on a background with the HunterLab color 64.4390, -2.4573, 1.8718.



This preview shows how white text looks on a background with the HunterLab color 64.4390, -2.4573,

1.8718.

Color Blindness Simulation

Color vision deficiency is a very complex topic, and I could not describe the different causes any better than Wikipedia does, so if you want to learn more, you should check out their [article about color blindness](#).

Dichromacy



Original Color

64.4390, -2.4573, 1.8718

Protanopia

64.5278, -2.1502, 1.9838

Deuteranopia

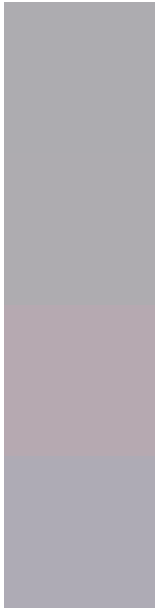
64.3246, 4.6697, 1.3789



Tritanopia

64.4866, -0.2757, -1.9616

Trichromacy



Original Color

64.4390, -2.4573, 1.8718

Protanomaly

64.5278, -2.1502, 1.9838

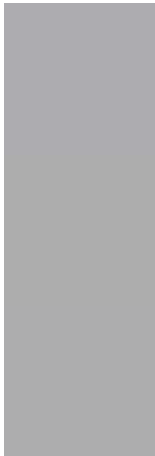
Deuteranomaly

64.4169, 2.0325, 1.4445

Tritanomaly

64.3900, -0.8005, -0.5908

Monochromacy



Original Color

64.4390, -2.4573, 1.8718

Achromatopsia

64.6440, -3.4492, 3.5122

Achromatomaly

64.6741, -3.2846, 3.0836

CSS Examples

Text

The CSS property to change the color of the text to HunterLab 64.4390, -2.4573, 1.8718 is called "color". The color property can be set on classes, ids or directly on the HTML element.

This example shows how text in the color `rgb(173, 172, 176)` looks like.

```
.text, #text, p{  
    color:rgb(173, 172, 176)  
}
```

If you want to add a text shadow in that color use the text-shadow property, you can generate a text shadow directly with our [CSS Text Shadow Generator](#).

Here you see how black text with a 4 pixel rgb(173, 172, 176) colored shadow looks like.

```
.shadow{ text-shadow: 4px 4px 2px rgb(173, 172, 176) }
```

Border

The CSS property to change the border of an element to HunterLab 64.4390, -2.4573, 1.8718 is called "border". The border property can be set on classes, ids or directly on the HTML element.

This example shows the color as border, it can be applied via the CSS property "border" or "border-color".

```
.border, #border, table{ border:4px solid rgb(173, 172, 176) }
```


If only the border color should be changed use the property border-color.

```
.border{ border-color:rgb(173, 172, 176) }
```

If you want to add a box shadow in that color use:

Here you see how a box with a 4 pixel rgb(173, 172, 176) colored shadow looks like.

```
.boxshadow{ -moz-box-shadow:4px 4px 4px  
4px rgb(173, 172, 176); -webkit-box-  
shadow:4px 4px 4px 4px rgb(173, 172, 176);  
box-shadow:4px 4px 4px 4px rgb(173, 172,  
176) }
```

Background

The CSS property to change the background color of an element to HunterLab 64.4390, -2.4573, 1.8718 is called "background". The background property can be set on classes, ids or directly on the HTML element.

```
.background, #background, body{  
background: rgb(173, 172, 176) }
```

If only the background color should be changed can be used:

```
.background{ background-color: rgb(173,  
172, 176) }
```

This example shows the color as background, it is applied via the CSS property "background".

To optimize and compress your CSS code, you can use our [online CSS compressor and optimizer](#) based on csstidy. If you want to create a linear or radial gradient as background or border, check our [CSS Gradient Generator](#).

Hey! You found this booklet interesting? Support Converting Colors with the new Membership Option!

The pro membership hides all ads, plus gives you double the colors in the color bucket, and more awesome pro features!

[Learn more, Memberships starting at \\$2.50/m!](#)

**Follow me
on Twitter!**

@ConvertingColor