

Converting Colors

HunterLab(64.5715, 29.2402,
-2.3573)

Have a look what the booklet for
HunterLab(64.5715, 29.2402,
-2.3573) contains.

HunterLab(64.5668, 29.2395, -2.3601)	3
<i>Conversions</i>	4
<i>Details</i>	6
<i>Harmonies</i>	12
<i>Previews</i>	24
<i>Color Blindness Simulation</i>	28
<i>CSS Examples</i>	31

Color

**HunterLab(64.5668, 29.2395,
-2.3601)**

Conversions

Conversions Part 1

Format	Color
Hex	E396BA
RGB	227, 150, 186
RGB Percent	89%, 59%, 73%
CMY	0.1098, 0.4117, 0.2706
CMYK	0.00, 0.34, 0.18, 0.11
HSL	332°, 58%, 74%
HSV	332°, 34%, 89%
XYZ	51.4478, 41.6887, 51.7894
YIQ	177.1270, 34.3360, 27.5200

Conversions

Conversions Part 2

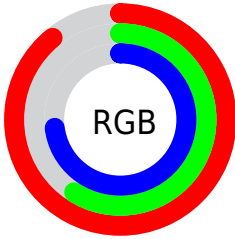
Format	Color
R _Y B	227, 150, 186
Decimal	14915258
CIE Lab	70.66, 33.97, -6.71
CIE LCh	71, 34.624, 348.823
Yxy	41.6907, 0.3550, 0.2877
Android (android.graphics.Color)	4293105338 (0xFFE396BA)
YUV	177.1270, 4.3744, 43.7386
Hunter-Lab	64.5668, 29.2395, -2.3601

Details

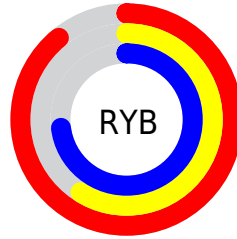
The HunterLab color $64.5668, 29.2395, -2.3601$ is a light color, and the websafe version is hex $FF99CC$. A complement of this color would be $80.7371, -31.9565, 12.9915$, and the grayscale version is $66.3331, -3.5394, 3.6040$.

A 20% lighter version of the original color is $84.4591, 19.3668, -6.5884$, and $43.5602, 26.9473, -2.8900$ is the 20% darker color. If you saturate the color by 10%, you get $58.8569, 39.3564, -3.3379$, and if you desaturate by 10%, it is $70.8425, 19.0653, -0.7719$.

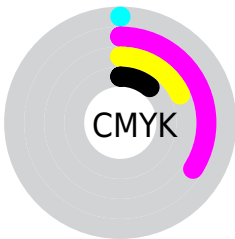
Distribution



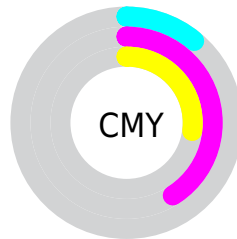
- Red (89%)
- Green (59%)
- Blue (73%)



- Red (89%)
- Yellow (59%)
- Blue (73%)



- Cyan (0%)
- Magenta (34%)
- Yellow (18%)
- Black (11%)



- Cyan (11%)
- Magenta (41%)
- Yellow (27%)

Brightness & Saturation Gradients

These gradients show how the HunterLab color 64.5668, 29.2395, -2.3601 changes by changing the brightness by 10 percent. The first figure shows a shift by +10% for each color and the second figure -10%.

Similar to the brightness gradients but the following saturation gradients show a change of the HunterLab color 64.5668, 29.2395, -2.3601 by changing the saturation by 10% instead.

64.5668, 29.2395, -2.3601

64.5668, 29.2395, -2.3601

187.9359, 34.5640, 2.0316

53.7207, 28.2276, -2.6319

88.1653, 30.9563, -1.6630

43.5595, 27.1051, -2.8488

100.8509, 31.6833, -1.2477

34.1346, 25.8586, -3.0032

114.0926, 32.3312, -0.7915

25.5088, 24.4788, -3.0867

127.8679, 32.9058, -0.2967

17.7644, 22.9665, -3.0882

142.1568, 33.4122, 0.2347

11.0162, 21.3699, -2.9929

156.9416, 33.8549,

2.6972, 54.8169,

0.8009

-10.1678

172.2062, 34.2377,
1.4004

0.0000, NaN, NaN

0.0000, NaN, NaN

■ 64.5668, 29.2395,
-2.3601

■ 64.5668, 29.2395,
-2.3601

■ 58.8569, 39.3564,
-3.3379

■ 70.8425, 19.0653,
-0.7719

■ 53.8111, 49.1194,
-3.5550

■ 77.5920, 9.0065,
1.2906

■ 49.5428, 58.0406,
-2.8544

■ 84.7448, -0.8652,
3.7247

■ 46.1572, 65.4651,
-1.1276

■ 92.2428, -10.5281,
6.4511

■ 43.7248, 70.7020,

■ 97.2275, -15.6738,

1.6161

6.2524

■ 42.2408, 73.3072,
5.1865

■ 97.5044, -14.1295,
2.3057

■ 41.6823, 73.8848,
7.5345

Harmonies

Analogous

The Analogous color harmony consists of three colors that are next to each other on the color wheel.



64.5683, 21.1174, -18.6237



64.5668, 29.2395, -2.3601



64.5683, 27.9892, 12.1829

Triad

The Triadic color harmony groups three colors that are evenly spaced from another and form a triangle on the color wheel.



64.5683, 29.2369, -2.3587



64.5683, -12.9865, 25.3671



64.5683, -22.3061, -22.3229

Complementary

The Complementary color scheme is a pair of colors which are on the opposite of each other on the color wheel.



64.5668, 29.2395, -2.3601



80.7371, -31.9565, 12.9915

Split Complementary

Split-complementary colors differ from the complementary color scheme. The scheme consists of three colors, the original color and two neighbors of the complement color.



64.5683, -29.8269, -6.5518



64.5668, 29.2395, -2.3601



64.5683, -24.8152, 19.8310

Square

The Square scheme is like the rectangle color scheme, but the four colors are evenly spaced on the color wheel.



64.5683, 29.2369, -2.3587



64.5683, 2.5631, 25.9704



64.5683, -30.6988, 8.8833



64.5683, -9.2482, -31.8676

Rectangle

The Rectangle color scheme consists of four colors that form a rectangle on the color wheel.



64.5668, 29.2395, -2.3601



64.5683, 22.0401, 19.1704



64.5683, -30.6988, 8.8833



64.5683, -25.5094, -17.4199

Sweetspot

The Sweet Spot groups the original color and five complimentary colors.



64.5683, 29.2369, -2.3587



91.6252, 5.9075, 2.4983



61.8710, 24.3055, -31.0917



41.8610, 3.4730, 0.9785

0.0000, NaN, NaN



46.2646, -2.4686, 2.5136

Same Dimension

The Same Dimension uses a secret algorithm to generate beautiful new colors.



64.5683, 29.2369, -2.3587



68.8152, 41.8613, -3.5891



63.8431, 23.3098, 12.9494



38.0521, 2.1593, 1.1005



31.8680, 56.5565, 5.2320



8.7698, 15.7631, -0.1045

Inverse Universe

The Inverse Universe completely reimagines the original color for something new.



64.5683, 29.2369, -2.3587



68.8152, 41.8613, -3.5891



81.4062, -25.0119, -3.2055



38.0521, 2.1593, 1.1005



31.8680, 56.5565, 5.2320



8.7698, 15.7631, -0.1045

Previews

White Background



This preview shows how the HunterLab color 64.5668, 29.2395, -2.3601 looks on a white background.

Color Contrast Check

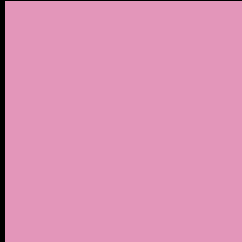
Large Text (above 18pt) WCAG AA × Fail

Any Text WCAG AA × Fail

Large Text (above 18pt) WCAG AAA × Fail

Any Text WCAG AAA × Fail

Black Background



This preview shows how the HunterLab color 64.5668, 29.2395, -2.3601 looks on a black background.

Color Contrast Check

Large Text (above 18pt) WCAG AA ✓ Pass

Any Text WCAG AA ✓ Pass

Large Text (above 18pt) WCAG AAA ✓ Pass

Any Text WCAG AAA ✓ Pass

If you want to check with other color combinations, try the [Color Contrast Checker](#).

HunterLab 64.5668, 29.2395, -2.3601 Background



This preview shows how black text looks on a background with the HunterLab color 64.5668, 29.2395, -2.3601.



This preview shows how white text looks on a background with the HunterLab color 64.5668, 29.2395, -2.3601.

-2.3601.

Color Blindness Simulation

Color vision deficiency is a very complex topic, and I could not describe the different causes any better than Wikipedia does, so if you want to learn more, you should check out their [article about color blindness](#).

Dichromacy



Original Color

64.5668, 29.2395, -2.3601

Protanopia

64.8074, 0.4127, -10.0502

Deuteranopia

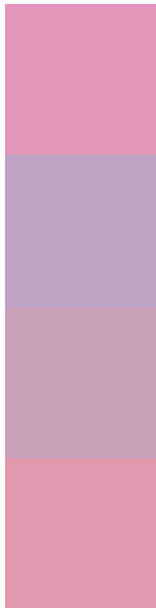
64.7018, 4.8477, -1.0988



Tritanopia

64.6803, 23.1359, 7.6300

Trichromacy



Original Color

64.5668, 29.2395, -2.3601

Protanomaly

64.2728, 10.0318, -7.8470

Deuteranomaly

64.3179, 13.6743, -1.9307

Tritanomaly

64.7830, 25.2188, 4.1775

Monochromacy



Original Color

64.5668, 29.2395, -2.3601

Achromatopsia

66.3066, -3.5380, 3.6026

Achromatomaly

65.2187, 7.8326, 1.0699

CSS Examples

Text

The CSS property to change the color of the text to HunterLab 64.5668, 29.2395, -2.3601 is called "color". The color property can be set on classes, ids or directly on the HTML element.

This example shows how text in the color `rgb(227, 150, 186)` looks like.

```
.text, #text, p{  
    color:rgb(227, 150, 186)  
}
```

If you want to add a text shadow in that color use the text-shadow property, you can generate a text shadow directly with our [CSS Text Shadow Generator](#).

Here you see how black text with a 4 pixel rgb(227, 150, 186) colored shadow looks like.

```
.shadow{ text-shadow: 4px 4px 2px rgb(227, 150, 186) }
```

Border

The CSS property to change the border of an element to HunterLab 64.5668, 29.2395, -2.3601 is called "border". The border property can be set on classes, ids or directly on the HTML element.

This example shows the color as border, it can be applied via the CSS property "border" or "border-color".

```
.border, #border, table{ border:4px solid rgb(227, 150, 186) }
```


If only the border color should be changed use the property border-color.

```
.border{ border-color:rgb(227, 150, 186) }
```

If you want to add a box shadow in that color use:

Here you see how a box with a 4 pixel rgb(227, 150, 186) colored shadow looks like.

```
.boxshadow{ -moz-box-shadow:4px 4px 4px  
4px rgb(227, 150, 186); -webkit-box-  
shadow:4px 4px 4px 4px rgb(227, 150, 186);  
box-shadow:4px 4px 4px 4px rgb(227, 150,  
186) }
```

Background

The CSS property to change the background color of an element to HunterLab 64.5668, 29.2395, -2.3601 is called "background". The background property can be set on classes, ids or directly on the HTML element.

```
.background, #background, body{  
background: rgb(227, 150, 186) }
```

If only the background color should be changed can be used:

```
.background{ background-color: rgb(227,  
150, 186) }
```

This example shows the color as background, it is applied via the CSS property "background".

To optimize and compress your CSS code, you can use our [online CSS compressor and optimizer](#) based on csstidy. If you want to create a linear or radial gradient as background or border, check our [CSS Gradient Generator](#).

Hey! You found this booklet interesting? Support Converting Colors with the new Membership Option!

The pro membership hides all ads, plus gives you double the colors in the color bucket, and more awesome pro features!

[Learn more, Memberships starting at \\$2.50/m!](#)

**Follow me
on Twitter!**

@ConvertingColor