

# Converting Colors

HunterLab(64.6857, 11.2285,  
12.1133)

Have a look what the booklet for  
HunterLab(64.6857, 11.2285,  
12.1133) contains.

<b>HunterLab(64.5980, 11.4307, 11.9454)</b> .....	3
<i><b>Conversions</b></i> .....	4
<i><b>Details</b></i> .....	6
<i><b>Harmonies</b></i> .....	12
<i><b>Previews</b></i> .....	24
<i><b>Color Blindness Simulation</b></i> .....	28
<i><b>CSS Examples</b></i> .....	31

# Color

**HunterLab(64.5980, 11.4307,  
11.9454)**

# Conversions

## Conversions Part 1

Format	Color
Hex	D1A29A
RGB	209, 162, 154
RGB Percent	82%, 64%, 60%
CMY	0.1804, 0.3647, 0.3961
CMYK	0.00, 0.22, 0.26, 0.18
HSL	9°, 37%, 71%
HSV	9°, 26%, 82%
XYZ	45.0475, 41.7290, 36.2520
YIQ	175.1410, 30.5800, 7.4760

# Conversions

## Conversions Part 2

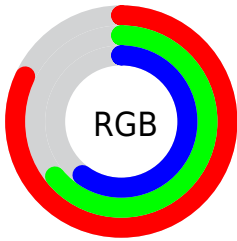
Format	Color
R <sub>YB</sub>	209, 163, 154
Decimal	13738650
CIE Lab	70.69, 16.20, 10.84
CIE LCh	71, 19.487, 33.789
Yxy	41.7310, 0.3662, 0.3392
Android (android.graphics.Color)	4291928730 (0xFFD1A29A)
YUV	175.1410, -10.4225, 29.6943
Hunter-Lab	64.5980, 11.4307, 11.9454

# Details

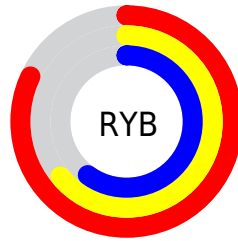
The HunterLab color  $64.5980, 11.4307, 11.9454$  is a light color, and the websafe version is hex  $CC9999$ . A complement of this color would be  $72.9692, -15.8517, -4.3277$ , and the grayscale version is  $65.5673, -3.4985, 3.5624$ .

A 20% lighter version of the original color is  $86.8561, 7.1466, 12.9102$ , and  $43.5903, 11.1462, 9.6017$  is the 20% darker color. If you saturate the color by 10%, you get  $59.3655, 17.9780, 14.6968$ , and if you desaturate by 10%, it is  $70.1670, 5.2093, 9.1004$ .

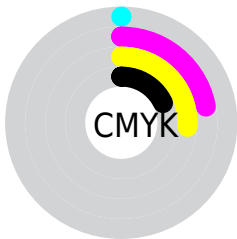
# Distribution



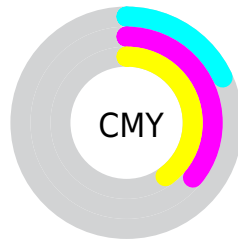
- Red (82%)
- Green (64%)
- Blue (60%)



- Red (82%)
- Yellow (64%)
- Blue (60%)



- Cyan (0%)
- Magenta (22%)
- Yellow (26%)
- Black (18%)




- Cyan (18%)
- Magenta (36%)
- Yellow (40%)


# Brightness & Saturation Gradients

These gradients show how the HunterLab color 64.5980, 11.4307, 11.9454 changes by changing the brightness by 10 percent. The first figure shows a shift by +10% for each color and the second figure -10%.


Similar to the brightness gradients but the following saturation gradients show a change of the HunterLab color 64.5980, 11.4307, 11.9454 by changing the saturation by 10% instead.





 64.5980, 11.4307,  
11.9454


 64.5980, 11.4307,  
11.9454


187.9804, 10.7426,  
22.7289

 53.7500, 11.2014,  
10.7782


 88.1999, 11.6633,  
14.2840

 43.5869, 10.8897,  
9.6031

 100.8871, 11.6849,  
15.4602

 34.1598, 10.4812,  
8.4121


114.1303, 11.6494,  
16.6445

 25.5317, 9.9597,  
7.1913

127.9070, 11.5611,  
17.8383

 17.7847, 9.3035,  
5.9163

142.1974, 11.4234,  
19.0429

 11.0335, 8.4838,  
4.8739

156.9836, 11.2394,

 2.7538, 25.4800,

20.2591

1.9277

172.2495, 11.0117,  
21.4876

0.0000, NaN, NaN

0.0000, NaN, NaN

■ 64.5980, 11.4307,  
11.9454

■ 64.5980, 11.4307,  
11.9454

■ 59.3655, 17.9780,  
14.6968

■ 70.1670, 5.2093,  
9.1004

■ 54.5209, 24.8357,  
17.2963

■ 76.0217, -0.6891,  
6.1943

■ 50.1317, 31.9201,  
19.6634

■ 82.1258, -6.2933,  
3.2501

■ 46.2728, 39.0593,  
21.6872

■ 88.4486, -11.6359,  
0.2811

■ 43.0219, 45.9607,

■ 94.8449, -17.4220,

23.2332

-1.0038

■ 40.4483, 52.2099,  
24.1719

■ 96.0705, -19.2882,  
0.4732

■ 38.5942, 57.3281,  
24.4455

■ 38.0855, 58.8137,  
24.4978

# Harmonies

## Analogous

The Analogous color harmony consists of three colors that are next to each other on the color wheel.



64.5995, 14.5665, 4.5850



64.5980, 11.4307, 11.9454



64.5995, 4.2996, 16.5064

# Triad

The Triadic color harmony groups three colors that are evenly spaced from another and form a triangle on the color wheel.



64.5995, 11.4283, 11.9464



64.5995, -18.1267, 10.3144



64.5995, -2.3133, -14.9703

# Complementary

The Complementary color scheme is a pair of colors which are on the opposite of each other on the color wheel.



64.5980, 11.4307, 11.9454



72.9692, -15.8517, -4.3277

# Split Complementary

Split-complementary colors differ from the complementary color scheme. The scheme consists of three colors, the original color and two neighbors of the complement color.



64.5995, -10.8513, -12.8978



64.5980, 11.4307, 11.9454



64.5995, -19.6862, 2.4291

# Square

The Square scheme is like the rectangle color scheme, but the four colors are evenly spaced on the color wheel.



64.5995, 11.4283, 11.9464



64.5995, -12.7131, 15.6577



64.5995, -17.0934, -6.2295



64.5995, 6.3657, -11.5633



# Rectangle

The Rectangle color scheme consists of four colors that form a rectangle on the color wheel.



64.5980, 11.4307, 11.9454



64.5995, -1.5845, 17.7221



64.5995, -17.0934, -6.2295



64.5995, -5.2953, -14.8936

# Sweetspot

The Sweet Spot groups the original color and five complimentary colors.



64.5995, 11.4283, 11.9464



93.8794, 0.4212, 8.4080



63.9651, 23.3250, -11.7783



42.9109, 0.7082, 4.1472

0.0000, NaN, NaN



46.2646, -2.4686, 2.5136



# Same Dimension

The Same Dimension uses a secret algorithm to generate beautiful new colors.



64.5995, 11.4283, 11.9464



76.8804, 19.2274, 17.0637



72.2580, -2.2213, 19.4006



34.7590, 0.5167, 3.3259



30.0526, 45.7040, 19.3184



7.7215, 8.9330, 4.9143

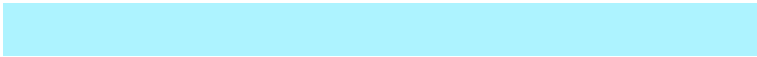


# Inverse Universe

The Inverse Universe completely reimagines the original color for something new.



72.9692, -15.8517, -4.3277



89.6246, -22.4869, -7.7539



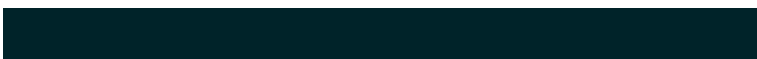
64.6610, -2.7244, -15.5151



36.1961, -4.1376, 0.5380



47.6723, -19.6236, -17.2244

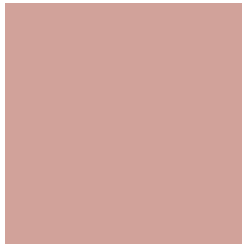


11.6305, -5.1017, -3.5239



# Previews

## White Background



This preview shows how the HunterLab color 64.5980, 11.4307, 11.9454 looks on a white background.

## Color Contrast Check

Large Text (above 18pt) WCAG AA × Fail

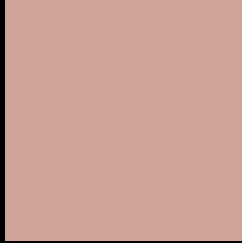
Any Text WCAG AA × Fail

Large Text (above 18pt) WCAG AAA × Fail

Any Text WCAG AAA × Fail



# Black Background



This preview shows how the HunterLab color 64.5980, 11.4307, 11.9454 looks on a black background.

## Color Contrast Check

Large Text (above 18pt) WCAG AA ✓ Pass

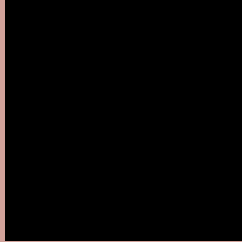
Any Text WCAG AA ✓ Pass

Large Text (above 18pt) WCAG AAA ✓ Pass

Any Text WCAG AAA ✓ Pass

If you want to check with other color combinations, try the [Color Contrast Checker](#).

## HunterLab 64.5980, 11.4307, 11.9454 Background



This preview shows how black text looks on a background with the HunterLab color 64.5980, 11.4307, 11.9454.



This preview shows how white text looks on a background with the HunterLab color 64.5980, 11.4307,



# Color Blindness Simulation

Color vision deficiency is a very complex topic, and I could not describe the different causes any better than Wikipedia does, so if you want to learn more, you should check out their [article about color blindness](#).

## Dichromacy



### Original Color

64.5980, 11.4307, 11.9454

### Protanopia

64.9065, -3.2763, 9.5579

### Deuteranopia

64.6588, 4.4351, 12.2855



## Tritanopia

64.5164, 16.3263, 4.1726

# Trichromacy



## Original Color

64.5980, 11.4307, 11.9454

## Protanomaly

64.7464, 2.0579, 10.3107

## Deuteranomaly

64.5195, 6.8635, 12.1825

## Tritanomaly

64.4669, 14.3862, 7.2374

# Monochromacy



## Original Color

64.5980, 11.4307, 11.9454

## Achromatopsia

65.4745, -3.4936, 3.5574

## Achromatomaly

64.8878, 1.5532, 6.6055

# CSS Examples

## Text

The CSS property to change the color of the text to HunterLab 64.5980, 11.4307, 11.9454 is called "color". The color property can be set on classes, ids or directly on the HTML element.

This example shows how text in the color `rgb(209, 162, 154)` looks like.

```
.text, #text, p{  
    color:rgb(209, 162, 154)  
}
```

If you want to add a text shadow in that color use the text-shadow property, you can generate a text shadow directly with our [CSS Text Shadow Generator](#).

Here you see how black text with a 4 pixel rgb(209, 162, 154) colored shadow looks like.

```
.shadow{ text-shadow: 4px 4px 2px rgb(209, 162, 154) }
```

## Border

The CSS property to change the border of an element to HunterLab 64.5980, 11.4307, 11.9454 is called "border". The border property can be set on classes, ids or directly on the HTML element.

This example shows the color as border, it can be applied via the CSS property "border" or "border-color".

```
.border, #border, table{ border:4px solid rgb(209, 162, 154) }
```



If only the border color should be changed use the property `border-color`.

```
.border{ border-color:rgb(209, 162, 154) }
```

If you want to add a box shadow in that color use:

Here you see how a box with a 4 pixel `rgb(209, 162, 154)` colored shadow looks like.

```
.boxshadow{ -moz-box-shadow:4px 4px 4px 4px rgb(209, 162, 154); -webkit-box-shadow:4px 4px 4px 4px rgb(209, 162, 154); box-shadow:4px 4px 4px 4px rgb(209, 162, 154) }
```

# Background

The CSS property to change the background color of an element to HunterLab 64.5980, 11.4307, 11.9454 is called "background". The background property can be set on classes, ids or directly on the HTML element.

```
.background, #background, body{  
background: rgb(209, 162, 154) }
```

If only the background color should be changed can be used:

```
.background{ background-color: rgb(209,  
162, 154) }
```

This example shows the color as background, it is applied via the CSS property "background".

To optimize and compress your CSS code, you can use our [online CSS compressor and optimizer](#) based on csstidy. If you want to create a linear or radial gradient as background or border, check our [CSS Gradient Generator](#).

Hey! You found this booklet interesting? Support Converting Colors with the new Membership Option!

The pro membership hides all ads, plus gives you double the colors in the color bucket, and more awesome pro features!

**[Learn more, Memberships starting at \\$2.50/m!](#)**

**Follow me  
on Twitter!**

@ConvertingColor