

Converting Colors

HunterLab(64.7118, 0.2325,
14.5013)

Have a look what the booklet for
HunterLab(64.7118, 0.2325,
14.5013) contains.

HunterLab(64.7552, 0.0464, 14.6286)	3
<i>Conversions</i>	4
<i>Details</i>	6
<i>Harmonies</i>	12
<i>Previews</i>	24
<i>Color Blindness Simulation</i>	28
<i>CSS Examples</i>	31

Color

**HunterLab(64.7552, 0.0464,
14.6286)**

Conversions

Conversions Part 1

Format	Color
Hex	BFAA93
RGB	191, 170, 147
RGB Percent	75%, 67%, 58%
CMY	0.2510, 0.3333, 0.4235
CMYK	0.00, 0.11, 0.23, 0.25
HSL	31°, 26%, 66%
HSV	31°, 23%, 75%
XYZ	41.1270, 41.9324, 33.5299
YIQ	173.6570, 19.8990, -2.7010

Conversions

Conversions Part 2

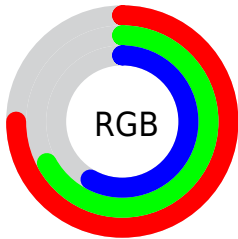
Format	Color
RYB	187, 191, 147
Decimal	12561043
CIELab	70.83, 3.94, 14.64
CIElCh	71, 15.160, 74.951
Yxy	41.9343, 0.3527, 0.3597
Android (android.graphics.Color)	4290751123 (0xFFBFAA93)
YUV	173.6570, -13.1419, 15.2098
Hunter-Lab	64.7552, 0.0464, 14.6286

Details

The HunterLab color $64.7552, 0.0464, 14.6286$ is a light color, and the websafe version is hex 999999 . A complement of this color would be $61.6189, -5.1722, -9.5487$, and the grayscale version is $64.9648, -3.4664, 3.5297$.

A 20% lighter version of the original color is $88.3312, -0.6362, 17.3274$, and $43.7261, 0.6589, 11.9501$ is the 20% darker color. If you saturate the color by 10%, you get $61.7121, 2.2110, 18.4775$, and if you desaturate by 10%, it is $67.9126, -1.8261, 10.2769$.

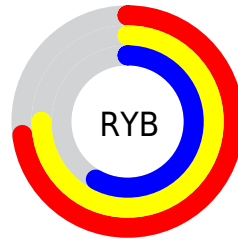
Distribution



Red (75%)

Green (67%)

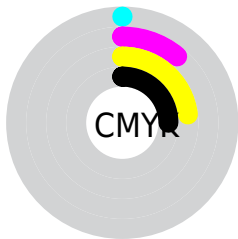
Blue (58%)



Red (73%)

Yellow (75%)

Blue (58%)

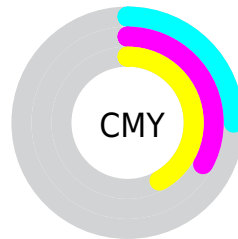


Cyan (0%)

Magenta (11%)

Yellow (23%)

Black (25%)



Cyan (25%)

Magenta (33%)

Yellow (42%)

Brightness & Saturation Gradients

These gradients show how the HunterLab color 64.7552, 0.0464, 14.6286 changes by changing the brightness by 10 percent. The first figure shows a shift by +10% for each color and the second figure -10%.

Similar to the brightness gradients but the following saturation gradients show a change of the HunterLab color 64.7552, 0.0464, 14.6286 by changing the saturation by 10% instead.

■ 64.7552, 0.0464,
14.6286

■ 64.7552, 0.0464,
14.6286

188.2048, -5.0797,
26.9206

■ 53.8979, 0.4209,
13.2427

■ 88.3743, -0.8422,
17.3622

■ 43.7247, 0.7475,
11.8308

■ 101.0694, -1.3457,
18.7195

■ 34.2869, 1.0184,
10.3799

114.3203, -1.8862,
20.0758

■ 25.6471, 1.2258,
8.8686

128.1044, -2.4615,
21.4340

■ 17.8870, 1.3586,
7.2611

142.4018, -3.0699,
22.7961

■ 11.1208, 1.3992,
6.2844

157.1949, -3.7100,

■ 3.0232, 5.5119,

24.1638

2.1162

172.4674, -4.3803,
25.5382

0.0000, NaN, NaN

0.0000, NaN, NaN

■ 64.7552, 0.0464,
14.6286

■ 64.7552, 0.0464,
14.6286

■ 61.7121, 2.2110,
18.4775

■ 67.9126, -1.8261,
10.2769

■ 58.7879, 4.6911,
21.7719

■ 71.1715, -3.4194,
5.4663

■ 55.9939, 7.4982,
24.4626

■ 74.5258, -4.7555,
0.2403

■ 53.3402, 10.6397,
26.5024

■ 77.9686, -5.8539,
-5.3622

■ 50.8371, 14.1127,

■ 81.4935, -6.7334,

27.8520

-11.3064

■ 48.4947, 17.9002,
28.4897

■ 84.8406, -8.8168,
-13.9916

■ 46.3214, 21.9642,
28.4270

■ 87.7670, -13.4579,
-10.0651

■ 44.9039, 24.8896,
28.1053

■ 90.7462, -18.0415,
-6.2115

■ 93.7751, -22.5694,
-2.4278

Harmonies

Analogous

The Analogous color harmony consists of three colors that are next to each other on the color wheel.



64.7567, 6.2634, 11.8712



64.7552, 0.0464, 14.6286



64.7567, -6.8674, 14.6341

Triad

The Triadic color harmony groups three colors that are evenly spaced from another and form a triangle on the color wheel.



64.7567, 0.0443, 14.6295



64.7567, -15.8596, 0.1618



64.7567, 6.2465, -6.1230

Complementary

The Complementary color scheme is a pair of colors which are on the opposite of each other on the color wheel.



64.7552, 0.0464, 14.6286



61.6189, -5.1722, -9.5487

Split Complementary

Split-complementary colors differ from the complementary color scheme. The scheme consists of three colors, the original color and two neighbors of the complement color.



64.7567, 0.0220, -9.9854



64.7552, 0.0464, 14.6286



64.7567, -12.6391, -6.1054

Square

The Square scheme is like the rectangle color scheme, but the four colors are evenly spaced on the color wheel.



64.7567, 0.0443, 14.6295



64.7567, -15.8542, 6.7365



64.7567, -6.8889, -9.9787



64.7567, 9.9455, 0.1399

Rectangle

The Rectangle color scheme consists of four colors that form a rectangle on the color wheel.



64.7552, 0.0464, 14.6286



64.7567, -10.9312, 13.0946



64.7567, -6.8889, -9.9787



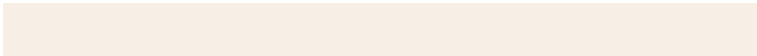
64.7567, 4.3688, -7.7730

Sweetspot

The Sweet Spot groups the original color and five complimentary colors.



64.7567, 0.0443, 14.6295



93.4545, -3.7503, 10.0090



58.9758, 14.8709, -0.7737



43.6684, -1.6971, 4.8754



98.8636, -5.2751, 5.3714



45.2661, -2.4153, 2.4594

Same Dimension

The Same Dimension uses a secret algorithm to generate beautiful new colors.



64.7567, 0.0443, 14.6295



84.4403, 1.5764, 22.4510



70.9576, -10.4731, 20.4751



32.1550, -1.1379, 3.9795



36.6244, 19.6749, 22.9122



8.0973, 2.1065, 5.0264

Inverse Universe

The Inverse Universe completely reimagines the original color for something new.



61.6189, -5.1722, -9.5487



79.2915, -6.9462, -17.2731



55.5884, 5.4845, -18.2233



31.5534, -2.1442, -0.6480



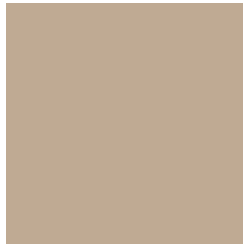
27.5036, 8.5035, -52.7336



6.5371, -0.3174, -7.4856

Previews

White Background



This preview shows how the HunterLab color 64.7552, 0.0464, 14.6286 looks on a white background.

Color Contrast Check

Large Text (above 18pt) WCAG AA × Fail

Any Text WCAG AA × Fail

Large Text (above 18pt) WCAG AAA × Fail

Any Text WCAG AAA × Fail

Black Background



This preview shows how the HunterLab color 64.7552, 0.0464, 14.6286 looks on a black background.

Color Contrast Check

Large Text (above 18pt) WCAG AA ✓ Pass

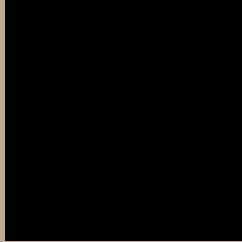
Any Text WCAG AA ✓ Pass

Large Text (above 18pt) WCAG AAA ✓ Pass

Any Text WCAG AAA ✓ Pass

If you want to check with other color combinations, try the [Color Contrast Checker](#).

HunterLab 64.7552, 0.0464, 14.6286 Background



This preview shows how black text looks on a background with the HunterLab color 64.7552, 0.0464, 14.6286.



This preview shows how white text looks on a background with the HunterLab color 64.7552, 0.0464,

Color Blindness Simulation

Color vision deficiency is a very complex topic, and I could not describe the different causes any better than Wikipedia does, so if you want to learn more, you should check out their [article about color blindness](#).

Dichromacy



Original Color

64.7552, 0.0464, 14.6286

Protanopia

64.7845, -4.3179, 14.2035

Deuteranopia

64.7439, 4.4704, 14.3162



Tritanopia

64.8760, 8.0180, 1.6237

Trichromacy



Original Color

64.7552, 0.0464, 14.6286

Protanomaly

64.7746, -2.8366, 14.2194

Deuteranomaly

64.7141, 2.9097, 14.2588

Tritanomaly

64.7277, 5.4234, 6.4920

Monochromacy



Original Color

64.7552, 0.0464, 14.6286

Achromatopsia

65.0590, -3.4714, 3.5348

Achromatomaly

65.0160, -2.6772, 7.9869

CSS Examples

Text

The CSS property to change the color of the text to HunterLab 64.7552, 0.0464, 14.6286 is called "color". The color property can be set on classes, ids or directly on the HTML element.

This example shows how text in the color `rgb(191, 170, 147)` looks like.

```
.text, #text, p{  
    color:rgb(191, 170, 147)  
}
```

If you want to add a text shadow in that color use the text-shadow property, you can generate a text shadow directly with our [CSS Text Shadow Generator](#).

Here you see how black text with a 4 pixel rgb(191, 170, 147) colored shadow looks like.

```
.shadow{ text-shadow: 4px 4px 2px rgb(191, 170, 147) }
```

Border

The CSS property to change the border of an element to HunterLab 64.7552, 0.0464, 14.6286 is called "border". The border property can be set on classes, ids or directly on the HTML element.

This example shows the color as border, it can be applied via the CSS property "border" or "border-color".

```
.border, #border, table{ border:4px solid rgb(191, 170, 147) }
```


If only the border color should be changed use the property `border-color`.

```
.border{ border-color:rgb(191, 170, 147) }
```

If you want to add a box shadow in that color use:

Here you see how a box with a 4 pixel `rgb(191, 170, 147)` colored shadow looks like.

```
.boxshadow{ -moz-box-shadow:4px 4px 4px  
4px rgb(191, 170, 147); -webkit-box-  
shadow:4px 4px 4px 4px rgb(191, 170, 147);  
box-shadow:4px 4px 4px 4px rgb(191, 170,  
147) }
```

Background

The CSS property to change the background color of an element to HunterLab 64.7552, 0.0464, 14.6286 is called "background". The background property can be set on classes, ids or directly on the HTML element.

```
.background, #background, body{  
background: rgb(191, 170, 147) }
```

If only the background color should be changed can be used:

```
.background{ background-color: rgb(191,  
170, 147) }
```

This example shows the color as background, it is applied via the CSS property "background".

To optimize and compress your CSS code, you can use our [online CSS compressor and optimizer](#) based on csstidy. If you want to create a linear or radial gradient as background or border, check our [CSS Gradient Generator](#).

Hey! You found this booklet interesting? Support Converting Colors with the new Membership Option!

The pro membership hides all ads, plus gives you double the colors in the color bucket, and more awesome pro features!

[Learn more, Memberships starting at \\$2.50/m!](#)

**Follow me
on Twitter!**

@ConvertingColor