

Converting Colors

HunterLab(64.8309, 12.2622,
22.4194)

Have a look what the booklet for
HunterLab(64.8309, 12.2622,
22.4194) contains.

HunterLab(64.8309, 12.2622, 22.4194)	3
<i>Conversions</i>	4
<i>Details</i>	6
<i>Harmonies</i>	12
<i>Previews</i>	24
<i>Color Blindness Simulation</i>	28
<i>CSS Examples</i>	31

Color

**HunterLab(64.8309, 12.2622,
22.4194)**

Conversions

Conversions Part 1

Format	Color
Hex	DBA17D
RGB	219, 161, 125
RGB Percent	86%, 63%, 49%
CMY	0.1412, 0.3686, 0.5098
CMYK	0.00, 0.26, 0.43, 0.14
HSL	23°, 57%, 67%
HSV	23°, 43%, 86%
XYZ	45.6599, 42.0305, 25.1081
YIQ	174.2380, 46.1240, 1.1000

Conversions

Conversions Part 2

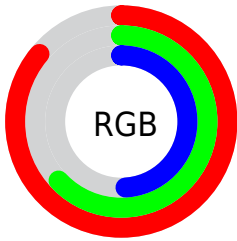
Format	Color
R _Y B	219, 183, 125
Decimal	14393725
CIE Lab	70.89, 17.06, 27.17
CIE LCh	71, 32.080, 57.881
Yxy	42.0325, 0.4048, 0.3726
Android (android.graphics.Color)	4292583805 (0xFFDBA17D)
YUV	174.2380, -24.2743, 39.2563
Hunter-Lab	64.8309, 12.2622, 22.4194

Details

The HunterLab color $64.8309, 12.2622, 22.4194$ is a light color, and the websafe version is hex $CC9966$. A complement of this color would be $65.8329, -11.6957, -19.9960$, and the grayscale version is $65.2432, -3.4812, 3.5448$.

A 20% lighter version of the original color is $85.7823, 3.5136, 23.8085$, and $43.7498, 11.8658, 17.9000$ is the 20% darker color. If you saturate the color by 10%, you get $60.8792, 17.1269, 25.2903$, and if you desaturate by 10%, it is $69.0188, 7.7753, 18.9872$.

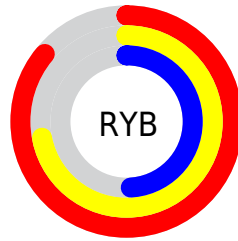
Distribution



Red (86%)

Green (63%)

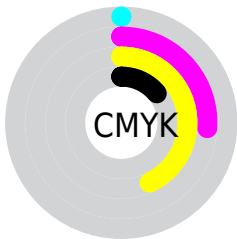
Blue (49%)



Red (86%)

Yellow (72%)

Blue (49%)

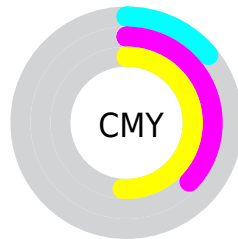


Cyan (0%)

Magenta (26%)

Yellow (43%)

Black (14%)



Cyan (14%)

Magenta (37%)

Yellow (51%)

Brightness & Saturation Gradients

These gradients show how the HunterLab color 64.8309, 12.2622, 22.4194 changes by changing the brightness by 10 percent. The first figure shows a shift by +10% for each color and the second figure -10%.

Similar to the brightness gradients but the following saturation gradients show a change of the HunterLab color 64.8309, 12.2622, 22.4194 by changing the saturation by 10% instead.

64.8309, 12.2622,
22.4194

64.8309, 12.2622,
22.4194

188.3129, 11.8663,
39.9321

53.9692, 11.9937,
20.2685

88.4583, 12.5673,
26.5310

43.7912, 11.6415,
18.0261

101.1574, 12.6233,
28.5170

34.3483, 11.1904,
15.6630

114.4119, 12.6211,
30.4697

25.7027, 10.6244,
13.1355

128.1995, 12.5649,
32.3959

17.9364, 9.9216,
10.5095

142.5004, 12.4585,
34.3012

11.1630, 9.0543,
7.8141

157.2967, 12.3048,

3.1448, 23.4663,

36.1900

2.2013

172.5724, 12.1066,
38.0659

0.0000, NaN, NaN

0.0000, NaN, NaN

■ 64.8309, 12.2622,
22.4194

■ 64.8309, 12.2622,
22.4194

■ 60.8792, 17.1269,
25.2903

■ 69.0188, 7.7753,
18.9872

■ 57.1861, 22.3727,
27.5174

■ 73.4139, 3.6627,
15.0657

■ 53.7824, 27.9640,
29.0233

■ 77.9963, -0.1008,
10.7214

■ 50.6982, 33.8283,
29.7465


■ 82.7474, -3.5421,
6.0111

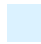
■ 47.9620, 39.8390,


■ 87.6510, -6.6898,

29.6693

0.9824

 46.2414, 44.0496,
29.2649

 92.6440, -9.8423,
-3.6322

 96.8504, -16.4722,
1.4733

Harmonies

Analogous

The Analogous color harmony consists of three colors that are next to each other on the color wheel.



64.8325, 23.4594, 14.8851



64.8309, 12.2622, 22.4194



64.8325, -2.4143, 25.0579

Triad

The Triadic color harmony groups three colors that are evenly spaced from another and form a triangle on the color wheel.



64.8325, 12.2593, 22.4203



64.8325, -29.3586, 4.5154



64.8325, 10.2907, -25.0187

Complementary

The Complementary color scheme is a pair of colors which are on the opposite of each other on the color wheel.



64.8309, 12.2622, 22.4194



65.8329, -11.6957, -19.9960

Split Complementary

Split-complementary colors differ from the complementary color scheme. The scheme consists of three colors, the original color and two neighbors of the complement color.



64.8325, -4.5047, -29.4986



64.8309, 12.2622, 22.4194



64.8325, -26.6020, -10.3450

Square

The Square scheme is like the rectangle color scheme, but the four colors are evenly spaced on the color wheel.



64.8325, 12.2593, 22.4203



64.8325, -25.7060, 16.2584



64.8325, -17.8162, -23.6218



64.8325, 22.2535, -12.4554

Rectangle

The Rectangle color scheme consists of four colors that form a rectangle on the color wheel.



64.8309, 12.2622, 22.4194



64.8325, -11.9146, 24.2566



64.8325, -17.8162, -23.6218



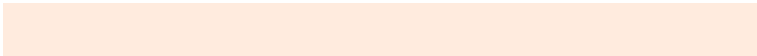
64.8325, 5.4455, -27.6276

Sweetspot

The Sweet Spot groups the original color and five complimentary colors.



64.8325, 12.2593, 22.4203



92.5655, -0.0386, 12.8407



57.6288, 39.3229, -10.7580



42.2563, 0.4275, 6.4899

0.0000, NaN, NaN



46.2646, -2.4686, 2.5136

Same Dimension

The Same Dimension uses a secret algorithm to generate beautiful new colors.



64.8325, 12.2593, 22.4203



72.5501, 20.0635, 29.9027



78.0438, -10.5557, 33.1654



37.2358, -0.6248, 4.2631



35.8822, 33.1907, 22.6915



9.9884, 6.3204, 6.2654

Inverse Universe

The Inverse Universe completely reimagines the original color for something new.



65.8329, -11.6957, -19.9960



73.9409, -14.0617, -30.5461



52.4578, 11.1848, -43.2262



37.3473, -3.2045, -0.3036



36.8027, -2.1405, -41.3794



10.2087, -1.8834, -8.6942

Previews

White Background



This preview shows how the HunterLab color 64.8309, 12.2622, 22.4194 looks on a white background.

Color Contrast Check

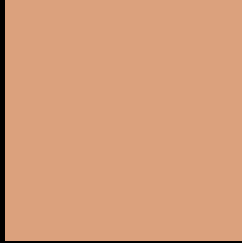
Large Text (above 18pt) WCAG AA × Fail

Any Text WCAG AA × Fail

Large Text (above 18pt) WCAG AAA × Fail

Any Text WCAG AAA × Fail

Black Background



This preview shows how the HunterLab color 64.8309, 12.2622, 22.4194 looks on a black background.

Color Contrast Check

Large Text (above 18pt) WCAG AA ✓ Pass

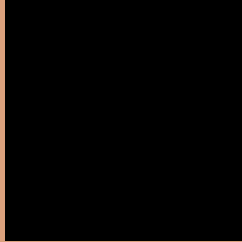
Any Text WCAG AA ✓ Pass

Large Text (above 18pt) WCAG AAA ✓ Pass

Any Text WCAG AAA ✓ Pass

If you want to check with other color combinations, try the [Color Contrast Checker](#).

HunterLab 64.8309, 12.2622, 22.4194 Background



This preview shows how black text looks on a background with the HunterLab color 64.8309, 12.2622, 22.4194.



This preview shows how white text looks on a background with the HunterLab color 64.8309, 12.2622,

Color Blindness Simulation

Color vision deficiency is a very complex topic, and I could not describe the different causes any better than Wikipedia does, so if you want to learn more, you should check out their [article about color blindness](#).

Dichromacy



Original Color

64.8309, 12.2622, 22.4194

Protanopia

65.0768, -5.5874, 20.4389

Deuteranopia

64.8021, 5.0594, 22.5725



Tritanopia

64.7462, 22.1356, 6.8055

Trichromacy



Original Color

64.8309, 12.2622, 22.4194

Protanomaly

64.7817, 0.8137, 20.9242

Deuteranomaly

64.6955, 7.5686, 22.5220

Tritanomaly

64.7383, 18.6388, 13.0120

Monochromacy



Original Color

64.8309, 12.2622, 22.4194

Achromatopsia

65.0590, -3.4714, 3.5348

Achromatomaly

64.5936, 1.4332, 10.9574

CSS Examples

Text

The CSS property to change the color of the text to HunterLab 64.8309, 12.2622, 22.4194 is called "color". The color property can be set on classes, ids or directly on the HTML element.

This example shows how text in the color `rgb(219, 161, 125)` looks like.

```
.text, #text, p{  
    color:rgb(219, 161, 125)  
}
```

If you want to add a text shadow in that color use the text-shadow property, you can generate a text shadow directly with our [CSS Text Shadow Generator](#).

Here you see how black text with a 4 pixel rgb(219, 161, 125) colored shadow looks like.

```
.shadow{ text-shadow: 4px 4px 2px rgb(219, 161, 125) }
```

Border

The CSS property to change the border of an element to HunterLab 64.8309, 12.2622, 22.4194 is called "border". The border property can be set on classes, ids or directly on the HTML element.

This example shows the color as border, it can be applied via the CSS property "border" or "border-color".

```
.border, #border, table{ border:4px solid rgb(219, 161, 125) }
```


If only the border color should be changed use the property border-color.

```
.border{ border-color:rgb(219, 161, 125) }
```

If you want to add a box shadow in that color use:

Here you see how a box with a 4 pixel rgb(219, 161, 125) colored shadow looks like.

```
.boxshadow{ -moz-box-shadow:4px 4px 4px  
4px rgb(219, 161, 125); -webkit-box-  
shadow:4px 4px 4px 4px rgb(219, 161, 125);  
box-shadow:4px 4px 4px 4px rgb(219, 161,  
125) }
```

Background

The CSS property to change the background color of an element to HunterLab 64.8309, 12.2622, 22.4194 is called "background". The background property can be set on classes, ids or directly on the HTML element.

```
.background, #background, body{  
background: rgb(219, 161, 125) }
```

If only the background color should be changed can be used:

```
.background{ background-color: rgb(219,  
161, 125) }
```

This example shows the color as background, it is applied via the CSS property "background".

To optimize and compress your CSS code, you can use our [online CSS compressor and optimizer](#) based on csstidy. If you want to create a linear or radial gradient as background or border, check our [CSS Gradient Generator](#).

Hey! You found this booklet interesting? Support Converting Colors with the new Membership Option!

The pro membership hides all ads, plus gives you double the colors in the color bucket, and more awesome pro features!

[Learn more, Memberships starting at \\$2.50/m!](#)

**Follow me
on Twitter!**

@ConvertingColor