

Converting Colors

HunterLab(64.9519, 4.2529,
9.0299)

Have a look what the booklet for
HunterLab(64.9519, 4.2529, 9.0299)
contains.

HunterLab(64.9738, 4.5101, 8.9234)	3
<i>Conversions</i>	4
<i>Details</i>	6
<i>Harmonies</i>	12
<i>Previews</i>	24
<i>Color Blindness Simulation</i>	28
<i>CSS Examples</i>	31

Color

**HunterLab(64.9738, 4.5101,
8.9234)**

Conversions

Conversions Part 1

Format	Color
Hex	C3A8A2
RGB	195, 168, 162
RGB Percent	76%, 66%, 64%
CMY	0.2353, 0.3412, 0.3647
CMYK	0.00, 0.14, 0.17, 0.24
HSL	11°, 22%, 70%
HSV	11°, 17%, 76%
XYZ	43.0299, 42.2159, 40.0629
YIQ	175.3890, 18.0180, 3.8580

Conversions

Conversions Part 2

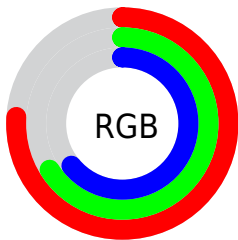
Format	Color
R_{YB}	195, 169, 162
Decimal	12822690
CIE _{Lab}	71.02, 8.84, 6.72
CIE _{LCh}	71, 11.104, 37.245
Yxy	42.2178, 0.3434, 0.3369
Android (android.graphics.Color)	4291012770 (0xFFC3A8A2)
YUV	175.3890, -6.6008, 17.1988
Hunter-Lab	64.9738, 4.5101, 8.9234

Details

The HunterLab color $64.9738, 4.5101, 8.9234$ is a light color, and the websafe version is hex $CC9999$. A complement of this color would be $69.2933, -10.6292, -1.6646$, and the grayscale version is $65.6587, -3.5034, 3.5674$.

A 20% lighter version of the original color is $88.5893, 4.2620, 10.7283$, and $43.9082, 4.6471, 7.2177$ is the 20% darker color. If you saturate the color by 10%, you get $60.0364, 9.8882, 11.6990$, and if you desaturate by 10%, it is $70.1585, -0.5790, 6.0491$.

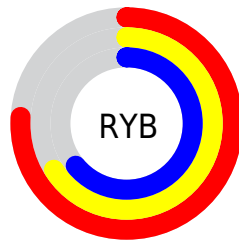
Distribution



Red (76%)

Green (66%)

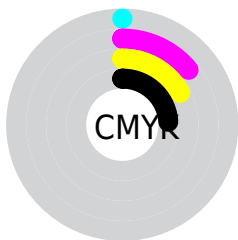
Blue (64%)



Red (76%)

Yellow (66%)

Blue (64%)

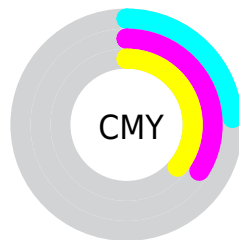


Cyan (0%)

Magenta (14%)

Yellow (17%)

Black (24%)



Cyan (24%)


Magenta (34%)

Yellow (36%)

Brightness & Saturation Gradients


These gradients show how the HunterLab color 64.9738, 4.5101, 8.9234 changes by changing the brightness by 10 percent. The first figure shows a shift by +10% for each color and the second figure -10%.


Similar to the brightness gradients but the following saturation gradients show a change of the HunterLab color 64.9738, 4.5101, 8.9234 by changing the saturation by 10% instead.


 64.9738, 4.5101,
8.9234


 64.9738, 4.5101,
8.9234


188.5166, 1.1758,
18.1247

 54.1035, 4.6391,
7.9838

 88.6167, 4.0762,
10.8493

 43.9165, 4.7052,
7.0548


 101.3230, 3.7850,
11.8361

 34.4638, 4.6974,
6.1337


114.5844, 3.4484,
12.8399

 25.8077, 4.6038,
5.2140

128.3787, 3.0695,
13.8613

 18.0295, 4.4070,
4.2842

142.6860, 2.6508,
14.9004

 11.2425, 4.0802,
3.3416

157.4886, 2.1944,

 3.3618, 11.2778,

15.9573

2.3532

172.7703, 1.7022,
17.0321

0.0000, NaN, NaN

0.0000, NaN, NaN

■ 64.9738, 4.5101,
8.9234

■ 64.9738, 4.5101,
8.9234

■ 60.0364, 9.8882,
11.6990

■ 70.1585, -0.5790,
6.0491

■ 55.3794, 15.5743,
14.3347

■ 75.5552, -5.3976,
3.0992

■ 51.0490, 21.5549,
16.7765

■ 81.1401, -9.9767,
0.0922

■ 47.0980, 27.7759,
18.9489

■ 86.8920, -14.3455,
-2.9602

■ 43.5860, 34.1155,

■ 92.6356, -19.4221,

20.7546

-3.8106

■ 40.5759, 40.3602,
22.0815

■ 95.0485, -23.0146,
-0.8495

■ 38.1258, 46.1942,
22.8270

■ 36.2754, 51.2222,
22.9678

■ 35.8225, 52.5205,
22.9931

Harmonies

Analogous

The Analogous color harmony consists of three colors that are next to each other on the color wheel.



64.9753, 6.5294, 4.7003



64.9738, 4.5101, 8.9234



64.9753, 0.3599, 11.5520

Triad

The Triadic color harmony groups three colors that are evenly spaced from another and form a triangle on the color wheel.



64.9753, 4.5081, 8.9244



64.9753, -12.2541, 7.0369



64.9753, -2.2312, -6.3966

Complementary

The Complementary color scheme is a pair of colors which are on the opposite of each other on the color wheel.



64.9738, 4.5101, 8.9234



69.2933, -10.6292, -1.6646

Split Complementary

Split-complementary colors differ from the complementary color scheme. The scheme consists of three colors, the original color and two neighbors of the complement color.



64.9753, -7.2139, -5.6507



64.9738, 4.5101, 8.9234



64.9753, -12.8998, 2.3514

Square

The Square scheme is like the rectangle color scheme, but the four colors are evenly spaced on the color wheel.



64.9753, 4.5081, 8.9244



64.9753, -9.2899, 10.5222



64.9753, -11.0815, -2.3558



64.9753, 2.5614, -4.3222

Rectangle

The Rectangle color scheme consists of four colors that form a rectangle on the color wheel.



64.9738, 4.5101, 8.9234



64.9753, -2.9991, 12.1682



64.9753, -11.0815, -2.3558



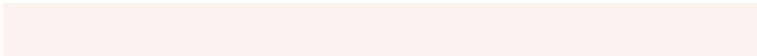
64.9753, -3.9404, -6.4699

Sweetspot

The Sweet Spot groups the original color and five complimentary colors.



64.9753, 4.5081, 8.9244



95.2043, -1.9907, 7.3736



64.1398, 12.0605, -5.0339



44.3131, -0.7113, 3.5820

0.0000, NaN, NaN



46.2646, -2.4686, 2.5136

Same Dimension

The Same Dimension uses a secret algorithm to generate beautiful new colors.



64.9753, 4.5081, 8.9244



84.6776, 8.4268, 13.2185



69.6363, -3.5198, 13.7438



32.1989, 0.2978, 3.1598



29.0356, 41.8475, 18.6242



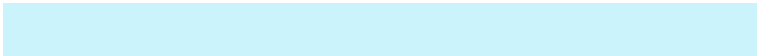
6.7582, 6.5949, 4.2798

Inverse Universe

The Inverse Universe completely reimagines the original color for something new.



69.2933, -10.6292, -1.6646



91.5791, -15.7972, -3.7126



64.4276, -2.7722, -7.8616



33.3267, -3.6487, 0.3956



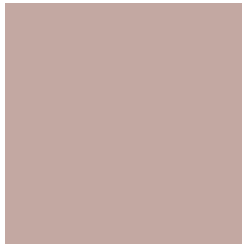
43.4825, -16.2610, -19.2466



9.4867, -3.9710, -3.2853

Previews

White Background



This preview shows how the HunterLab color 64.9738, 4.5101, 8.9234 looks on a white background.

Color Contrast Check

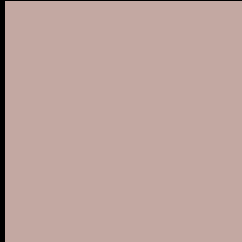
Large Text (above 18pt) WCAG AA × Fail

Any Text WCAG AA × Fail

Large Text (above 18pt) WCAG AAA × Fail

Any Text WCAG AAA × Fail

Black Background



This preview shows how the HunterLab color 64.9738, 4.5101, 8.9234 looks on a black background.

Color Contrast Check

Large Text (above 18pt) WCAG AA ✓ Pass

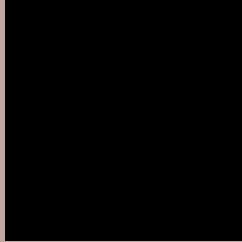
Any Text WCAG AA ✓ Pass

Large Text (above 18pt) WCAG AAA ✓ Pass

Any Text WCAG AAA ✓ Pass

If you want to check with other color combinations, try the [Color Contrast Checker](#).

HunterLab 64.9738, 4.5101, 8.9234 Background



This preview shows how black text looks on a background with the HunterLab color 64.9738, 4.5101, 8.9234.



This preview shows how white text looks on a background with the HunterLab color 64.9738, 4.5101,

8.9234.

Color Blindness Simulation

Color vision deficiency is a very complex topic, and I could not describe the different causes any better than Wikipedia does, so if you want to learn more, you should check out their [article about color blindness](#).

Dichromacy



Original Color

64.9738, 4.5101, 8.9234

Protanopia

64.9519, -2.8437, 7.4790

Deuteranopia

64.9738, 4.5101, 8.9234



Tritanopia

65.0823, 8.6984, 1.8849

Trichromacy



Original Color

64.9738, 4.5101, 8.9234

Protanomaly

64.9003, -0.0639, 7.9043

Deuteranomaly

64.9738, 4.5101, 8.9234

Tritanomaly

65.0782, 6.8811, 4.6630

Monochromacy



Original Color

64.9738, 4.5101, 8.9234

Achromatopsia

65.4745, -3.4936, 3.5574

Achromatomaly

65.0787, -0.6099, 5.4431

CSS Examples

Text

The CSS property to change the color of the text to HunterLab 64.9738, 4.5101, 8.9234 is called "color". The color property can be set on classes, ids or directly on the HTML element.

This example shows how text in the color `rgb(195, 168, 162)` looks like.

```
.text, #text, p{  
    color:rgb(195, 168, 162)  
}
```

If you want to add a text shadow in that color use the text-shadow property, you can generate a text shadow directly with our [CSS Text Shadow Generator](#).

Here you see how black text with a 4 pixel rgb(195, 168, 162) colored shadow looks like.

```
.shadow{ text-shadow: 4px 4px 2px rgb(195, 168, 162) }
```

Border

The CSS property to change the border of an element to HunterLab 64.9738, 4.5101, 8.9234 is called "border". The border property can be set on classes, ids or directly on the HTML element.

This example shows the color as border, it can be applied via the CSS property "border" or "border-color".

```
.border, #border, table{ border:4px solid rgb(195, 168, 162) }
```


If only the border color should be changed use the property `border-color`.

```
.border{ border-color:rgb(195, 168, 162) }
```

If you want to add a box shadow in that color use:

Here you see how a box with a 4 pixel `rgb(195, 168, 162)` colored shadow looks like.

```
.boxshadow{ -moz-box-shadow:4px 4px 4px  
4px rgb(195, 168, 162); -webkit-box-  
shadow:4px 4px 4px 4px rgb(195, 168, 162);  
box-shadow:4px 4px 4px 4px rgb(195, 168,  
162) }
```

Background

The CSS property to change the background color of an element to HunterLab 64.9738, 4.5101, 8.9234 is called "background". The background property can be set on classes, ids or directly on the HTML element.

```
.background, #background, body{  
background: rgb(195, 168, 162) }
```

If only the background color should be changed can be used:

```
.background{ background-color: rgb(195,  
168, 162) }
```

This example shows the color as background, it is applied via the CSS property "background".

To optimize and compress your CSS code, you can use our [online CSS compressor and optimizer](#) based on csstidy. If you want to create a linear or radial gradient as background or border, check our [CSS Gradient Generator](#).

Hey! You found this booklet interesting? Support Converting Colors with the new Membership Option!

The pro membership hides all ads, plus gives you double the colors in the color bucket, and more awesome pro features!

[Learn more, Memberships starting at \\$2.50/m!](#)

**Follow me
on Twitter!**

@ConvertingColor