

Converting Colors

HunterLab(64.9806, 2.3295,
4.8441)

Have a look what the booklet for
HunterLab(64.9806, 2.3295, 4.8441)
contains.

HunterLab(65.0035, 2.1774, 4.9513)	3
<i>Conversions</i>	4
<i>Details</i>	6
<i>Harmonies</i>	12
<i>Previews</i>	24
<i>Color Blindness Simulation</i>	28
<i>CSS Examples</i>	31

Color

**HunterLab(65.0035, 2.1774,
4.9513)**

Conversions

Conversions Part 1

Format	Color
Hex	BBAAAB
RGB	187, 170, 171
RGB Percent	73%, 67%, 67%
CMY	0.2667, 0.3333, 0.3294
CMYK	0.00, 0.09, 0.09, 0.27
HSL	356°, 11%, 70%
HSV	356°, 9%, 73%
XYZ	42.2190, 42.2546, 44.4589
YIQ	175.1970, 9.8110, 3.9150

Conversions

Conversions Part 2

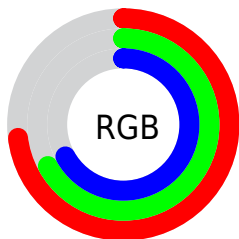
Format	Color
RYB	187, 170, 171
Decimal	12298923
CIELab	71.05, 6.30, 1.70
CIElCh	71, 6.525, 15.147
Yxy	42.2564, 0.3274, 0.3277
Android (android.graphics.Color)	4290489003 (0xFFBBAAAB)
YUV	175.1970, -2.0691, 10.3512
Hunter-Lab	65.0035, 2.1774, 4.9513

Details

The HunterLab color **65.0035, 2.1774, 4.9513** is a light color, and the websafe version is hex **999999**. A complement of this color would be **69.0166, -9.0173, 2.4604**, and the grayscale version is **65.5631, -3.4983, 3.5622**.

A 20% lighter version of the original color is **88.5416, 1.5239, 6.4048**, and **43.9967, 2.6865, 3.6382** is the 20% darker color. If you saturate the color by 10%, you get **59.2531, 8.9507, 6.3398**, and if you desaturate by 10%, it is **71.0564, -4.3455, 3.7242**.

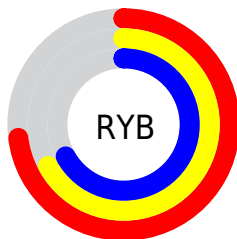
Distribution



Red (73%)

Green (67%)

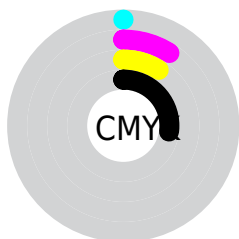
Blue (67%)



Red (73%)

Yellow (67%)

Blue (67%)

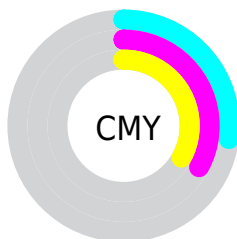


Cyan (0%)

Magenta (9%)

Yellow (9%)

Black (27%)



Cyan (27%)

Magenta (33%)

Yellow (33%)

Brightness & Saturation Gradients

These gradients show how the HunterLab color 65.0035, 2.1774, 4.9513 changes by changing the brightness by 10 percent. The first figure shows a shift by +10% for each color and the second figure -10%.

Similar to the brightness gradients but the following saturation gradients show a change of the HunterLab color 65.0035, 2.1774, 4.9513 by changing the saturation by 10% instead.

■ 65.0035, 2.1774,
4.9513

■ 65.0035, 2.1774,
4.9513

188.5589, -2.0849,
12.2920

■ 54.1314, 2.4336,
4.2748

■ 88.6496, 1.5085,
6.3968

■ 43.9426, 2.6342,
3.6286

101.3574, 1.1073,
7.1616

■ 34.4879, 2.7702,
3.0151

114.6203, 0.6651,
7.9535

■ 25.8295, 2.8316,
2.4354

128.4159, 0.1844,
8.7716

■ 18.0488, 2.8040,
1.8908

142.7246, -0.3327,
9.6152

■ 11.2590, 2.6647,
1.3813

157.5284, -0.8843,

■ 3.4051, 7.8779,

10.4836

2.2608

172.8114, -1.4688,
11.3761

0.0000, NaN, NaN

0.0000, NaN, NaN

■ 65.0035, 2.1774,
4.9513

■ 65.0035, 2.1774,
4.9513

■ 59.2531, 8.9507,
6.3398

■ 71.0564, -4.3455,
3.7242

■ 53.8550, 15.9812,
7.9060

■ 77.3649, -10.6342,
2.6339

■ 48.8779, 23.2249,
9.6621

■ 83.8965, -16.7199,
1.6610

■ 44.4046, 30.5594,
11.5989

■ 90.6242, -22.6329,
0.7878

■ 40.5312, 37.7339,

■ 94.5013, -25.0276,

13.6694

-1.5637

■ 37.3596, 44.3314,
15.7682

■ 34.9776, 49.7932,
17.7256

■ 33.4279, 53.5723,
19.3367

■ 32.6035, 55.6287,
20.3977

Harmonies

Analogous

The Analogous color harmony consists of three colors that are next to each other on the color wheel.



65.0049, 2.1835, 2.1196



65.0035, 2.1774, 4.9513



65.0049, 0.6361, 7.3002

Triad

The Triadic color harmony groups three colors that are evenly spaced from another and form a triangle on the color wheel.



65.0049, 2.1756, 4.9524



65.0049, -7.5008, 7.2816



65.0049, -4.9403, -1.9775

Complementary

The Complementary color scheme is a pair of colors which are on the opposite of each other on the color wheel.



65.0035, 2.1774, 4.9513



69.0166, -9.0173, 2.4604

Split Complementary

Split-complementary colors differ from the complementary color scheme. The scheme consists of three colors, the original color and two neighbors of the complement color.



65.0049, -7.4805, -0.4626



65.0035, 2.1774, 4.9513



65.0049, -8.9405, 4.9259

Square

The Square scheme is like the rectangle color scheme, but the four colors are evenly spaced on the color wheel.



65.0049, 2.1756, 4.9524



65.0049, -4.9686, 8.6030



65.0049, -8.9331, 2.0919



65.0049, -1.9617, -1.9696

Rectangle

The Rectangle color scheme consists of four colors that form a rectangle on the color wheel.



65.0035, 2.1774, 4.9513



65.0049, -1.0360, 8.3115



65.0049, -8.9331, 2.0919



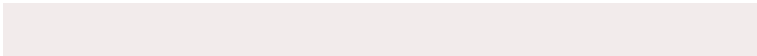
65.0049, -5.8726, -1.6266

Sweetspot

The Sweet Spot groups the original color and five complimentary colors.



65.0049, 2.1756, 4.9524



91.8422, -2.3991, 5.6112



65.3924, 4.4761, -2.2541



42.7905, -0.7952, 2.6951



97.7295, -5.2146, 5.3098



44.2712, -2.3622, 2.4053

Same Dimension

The Same Dimension uses a secret algorithm to generate beautiful new colors.



65.0049, 2.1756, 4.9524



85.3511, 4.7769, 6.9969



67.1252, -1.6733, 7.7398



30.8953, 1.1220, 2.3763



27.0177, 46.3438, 16.8753



5.3765, 9.2805, 2.9072

Inverse Universe

The Inverse Universe completely reimagines the original color for something new.



65.0049, 2.1756, 4.9524



85.3511, 4.7769, 6.9969



66.8058, -5.2340, -0.6513



30.8953, 1.1220, 2.3763



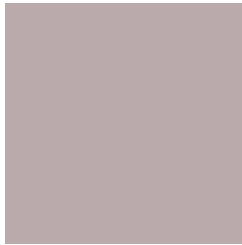
27.0177, 46.3438, 16.8753



5.3765, 9.2805, 2.9072

Previews

White Background



This preview shows how the HunterLab color 65.0035, 2.1774, 4.9513 looks on a white background.

Color Contrast Check

Large Text (above 18pt) WCAG AA × Fail

Any Text WCAG AA × Fail

Large Text (above 18pt) WCAG AAA × Fail

Any Text WCAG AAA × Fail

Black Background



This preview shows how the HunterLab color 65.0035, 2.1774, 4.9513 looks on a black background.

Color Contrast Check

Large Text (above 18pt) WCAG AA ✓ Pass

Any Text WCAG AA ✓ Pass

Large Text (above 18pt) WCAG AAA ✓ Pass

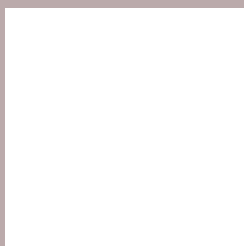
Any Text WCAG AAA ✓ Pass

If you want to check with other color combinations, try the [Color Contrast Checker](#).

HunterLab 65.0035, 2.1774, 4.9513 Background



This preview shows how black text looks on a background with the HunterLab color 65.0035, 2.1774, 4.9513.



This preview shows how white text looks on a background with the HunterLab color 65.0035, 2.1774,

Color Blindness Simulation

Color vision deficiency is a very complex topic, and I could not describe the different causes any better than Wikipedia does, so if you want to learn more, you should check out their [article about color blindness](#).

Dichromacy



Original Color

65.0035, 2.1774, 4.9513

Protanopia

65.0011, -2.2108, 3.9531

Deuteranopia

64.9246, 4.8555, 4.9069



Tritanopia

64.8645, 5.3280, -0.3901

Trichromacy



Original Color

65.0035, 2.1774, 4.9513

Protanomaly

65.0441, -0.6115, 4.4922

Deuteranomaly

65.0103, 3.6770, 4.9854

Tritanomaly

65.0243, 4.1459, 1.7352

Monochromacy



Original Color

65.0035, 2.1774, 4.9513

Achromatopsia

65.4745, -3.4936, 3.5574

Achromatomaly

65.2126, -1.4207, 3.7513

CSS Examples

Text

The CSS property to change the color of the text to HunterLab 65.0035, 2.1774, 4.9513 is called "color". The color property can be set on classes, ids or directly on the HTML element.

This example shows how text in the color `rgb(187, 170, 171)` looks like.

```
.text, #text, p{  
    color:rgb(187, 170, 171)  
}
```

If you want to add a text shadow in that color use the text-shadow property, you can generate a text shadow directly with our [CSS Text Shadow Generator](#).

Here you see how black text with a 4 pixel rgb(187, 170, 171) colored shadow looks like.

```
.shadow{ text-shadow: 4px 4px 2px rgb(187, 170, 171) }
```

Border

The CSS property to change the border of an element to HunterLab 65.0035, 2.1774, 4.9513 is called "border". The border property can be set on classes, ids or directly on the HTML element.

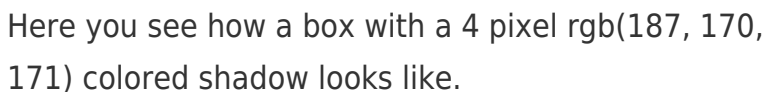
This example shows the color as border, it can be applied via the CSS property "border" or "border-color".

```
.border, #border, table{ border:4px solid rgb(187, 170, 171) }
```


If only the border color should be changed use the property `border-color`.

```
.border{ border-color:rgb(187, 170, 171) }
```

If you want to add a box shadow in that color use:



Here you see how a box with a 4 pixel `rgb(187, 170, 171)` colored shadow looks like.

```
.boxshadow{ -moz-box-shadow:4px 4px 4px 4px rgb(187, 170, 171); -webkit-box-shadow:4px 4px 4px 4px rgb(187, 170, 171); box-shadow:4px 4px 4px 4px rgb(187, 170, 171) }
```

Background

The CSS property to change the background color of an element to HunterLab 65.0035, 2.1774, 4.9513 is called "background". The background property can be set on classes, ids or directly on the HTML element.

```
.background, #background, body{  
background: rgb(187, 170, 171) }
```

If only the background color should be changed can be used:

```
.background{ background-color: rgb(187,  
170, 171) }
```

This example shows the color as background, it is applied via the CSS property "background".

To optimize and compress your CSS code, you can use our [online CSS compressor and optimizer](#) based on csstidy. If you want to create a linear or radial gradient as background or border, check our [CSS Gradient Generator](#).

Hey! You found this booklet interesting? Support Converting Colors with the new Membership Option!

The pro membership hides all ads, plus gives you double the colors in the color bucket, and more awesome pro features!

[Learn more, Memberships starting at \\$2.50/m!](#)

**Follow me
on Twitter!**

@ConvertingColor