

Converting Colors

HunterLab(65.0704, 3.9456,
1.7812)

Have a look what the booklet for
HunterLab(65.0704, 3.9456, 1.7812)
contains.

HunterLab(65.0243, 4.1459, 1.7352)	3
<i>Conversions</i>	4
<i>Details</i>	6
<i>Harmonies</i>	12
<i>Previews</i>	24
<i>Color Blindness Simulation</i>	28
<i>CSS Examples</i>	31

Color

**HunterLab(65.0243, 4.1459,
1.7352)**

Conversions

Conversions Part 1

Format	Color
Hex	BCA9B2
RGB	188, 169, 178
RGB Percent	74%, 66%, 70%
CMY	0.2627, 0.3372, 0.3020
CMYK	0.00, 0.10, 0.05, 0.26
HSL	332°, 12%, 70%
HSV	332°, 10%, 74%
XYZ	42.9628, 42.2816, 48.0162
YIQ	175.7070, 8.4350, 6.8270

Conversions

Conversions Part 2

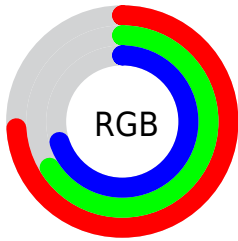
Format	Color
R_{YB}	188, 169, 178
Decimal	12364210
CIE Lab	71.07, 8.45, -2.12
CIE LCh	71, 8.708, 345.913
Yxy	42.2834, 0.3224, 0.3173
Android (android.graphics.Color)	4290554290 (0xFFBCA9B2)
YUV	175.7070, 1.1304, 10.7810
Hunter-Lab	65.0243, 4.1459, 1.7352

Details

The HunterLab color $65.0243, 4.1459, 1.7352$ is a light color, and the websafe version is hex 999999 . A complement of this color would be $69.0342, -10.9608, 5.7166$, and the grayscale version is $65.7626, -3.5089, 3.5730$.

A 20% lighter version of the original color is $88.5917, 3.7661, 2.5600$, and $43.9933, 4.3820, 1.0370$ is the 20% darker color. If you saturate the color by 10%, you get $59.4983, 12.1489, -0.0918$, and if you desaturate by 10%, it is $70.8526, -3.7028, 3.8299$.

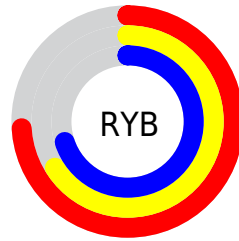
Distribution



Red (74%)

Green (66%)

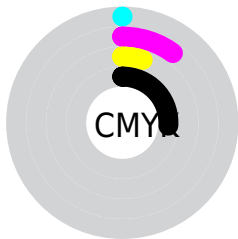
Blue (70%)



Red (74%)

Yellow (66%)

Blue (70%)

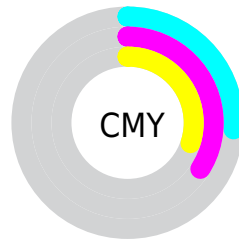


Cyan (0%)

Magenta (10%)

Yellow (5%)

Black (26%)



Cyan (26%)

Magenta (34%)

Yellow (30%)

Brightness & Saturation Gradients

These gradients show how the HunterLab color 65.0243, 4.1459, 1.7352 changes by changing the brightness by 10 percent. The first figure shows a shift by +10% for each color and the second figure -10%.

Similar to the brightness gradients but the following saturation gradients show a change of the HunterLab color 65.0243, 4.1459, 1.7352 by changing the saturation by 10% instead.

65.0243, 4.1459,
1.7352

65.0243, 4.1459,
1.7352

188.5886, 0.6672,
7.7122

54.1510, 4.2950,
1.2480

88.6727, 3.6756,
2.8323

43.9608, 4.3820,
0.8037

101.3815, 3.3672,
3.4351

34.5047, 4.3966,
0.4075

114.6454, 3.0142,
4.0717

25.8448, 4.3271,
0.0651

128.4420, 2.6195,
4.7405

18.0624, 4.1566,
-0.2158

142.7516, 2.1854,
5.4402

11.2706, 3.8588,
-0.4235

157.5563, 1.7142,

3.4351, 10.5300,

6.1694

-2.3704

172.8402, 1.2075,
6.9271

0.0000, NaN, NaN

0.0000, NaN, NaN

■ 65.0243, 4.1459,
1.7352

■ 65.0243, 4.1459,
1.7352

■ 59.4983, 12.1489,
-0.0918

■ 70.8526, -3.7028,
3.8299

■ 54.3219, 20.2724,
-1.5811

■ 76.9373, -11.3849,
6.1335

■ 49.5597, 28.4188,
-2.6368

■ 83.2465, -18.9119,
8.6057

■ 45.2870, 36.4007,
-3.1435

■ 89.7533, -26.3007,
11.2155

■ 41.5889, 43.9025,

■ 93.6932, -29.7810,

-2.9747

11.0022

■ 38.5519, 50.4656,
-2.0197

■ 93.9937, -28.0586,
6.7045

■ 36.2465, 55.5424,
-0.2324

■ 94.3101, -26.2508,
2.1931

■ 34.7009, 58.6620,
2.3133

■ 94.5682, -24.7807,
-1.4761

■ 33.7837, 59.9923,
5.2666

Harmonies

Analogous

The Analogous color harmony consists of three colors that are next to each other on the color wheel.



65.0257, 2.1353, -1.7508



65.0243, 4.1459, 1.7352



65.0257, 4.0779, 5.5108

Triad

The Triadic color harmony groups three colors that are evenly spaced from another and form a triangle on the color wheel.



65.0257, 4.1441, 1.7363



65.0257, -5.5653, 10.1801



65.0257, -8.7301, -1.9293

Complementary

The Complementary color scheme is a pair of colors which are on the opposite of each other on the color wheel.



65.0243, 4.1459, 1.7352



69.0342, -10.9608, 5.7166

Split Complementary

Split-complementary colors differ from the complementary color scheme. The scheme consists of three colors, the original color and two neighbors of the complement color.



65.0257, -10.6945, 1.5046



65.0243, 4.1459, 1.7352



65.0257, -8.8976, 8.4197

Square

The Square scheme is like the rectangle color scheme, but the four colors are evenly spaced on the color wheel.



65.0257, 4.1441, 1.7363



65.0257, -1.5935, 10.2338



65.0257, -10.7551, 5.2925



65.0257, -5.3316, -3.9520

Rectangle

The Rectangle color scheme consists of four colors that form a rectangle on the color wheel.



65.0243, 4.1459, 1.7352



65.0257, 2.8640, 7.6803



65.0257, -10.7551, 5.2925



65.0257, -9.5764, -0.8928

Sweetspot

The Sweet Spot groups the original color and five complimentary colors.



65.0257, 4.1441, 1.7363



93.0356, -1.8973, 4.2937



64.4753, 2.9322, -3.9704



42.8473, -0.4857, 1.8835



97.7295, -5.2146, 5.3098



44.2712, -2.3622, 2.4053

Same Dimension

The Same Dimension uses a secret algorithm to generate beautiful new colors.



65.0257, 4.1441, 1.7363



85.9474, 7.8167, 1.7902



64.8473, 2.5370, 5.6817



30.9993, 1.6816, 0.8926



27.9026, 49.5985, 3.9645



5.6409, 10.2462, -0.8979

Inverse Universe

The Inverse Universe completely reimagines the original color for something new.



65.0257, 4.1441, 1.7363



85.9474, 7.8167, 1.7902



69.2084, -9.2920, 1.7242



30.9993, 1.6816, 0.8926



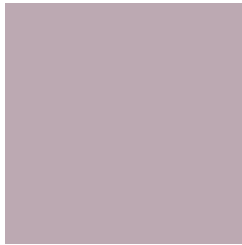
27.9026, 49.5985, 3.9645



5.6409, 10.2462, -0.8979

Previews

White Background



This preview shows how the HunterLab color 65.0243, 4.1459, 1.7352 looks on a white background.

Color Contrast Check

Large Text (above 18pt) WCAG AA × Fail

Any Text WCAG AA × Fail

Large Text (above 18pt) WCAG AAA × Fail

Any Text WCAG AAA × Fail

Black Background



This preview shows how the HunterLab color 65.0243, 4.1459, 1.7352 looks on a black background.

Color Contrast Check

Large Text (above 18pt) WCAG AA ✓ Pass

Any Text WCAG AA ✓ Pass

Large Text (above 18pt) WCAG AAA ✓ Pass

Any Text WCAG AAA ✓ Pass

If you want to check with other color combinations, try the [Color Contrast Checker](#).

HunterLab 65.0243, 4.1459, 1.7352 Background



This preview shows how black text looks on a background with the HunterLab color 65.0243, 4.1459, 1.7352.



This preview shows how white text looks on a background with the HunterLab color 65.0243, 4.1459,

1.7352.

Color Blindness Simulation

Color vision deficiency is a very complex topic, and I could not describe the different causes any better than Wikipedia does, so if you want to learn more, you should check out their [article about color blindness](#).

Dichromacy



Original Color

65.0243, 4.1459, 1.7352

Protanopia

65.0357, -1.6634, 0.6803

Deuteranopia

65.1223, 4.4748, 1.8591



Tritanopia

64.9627, 5.6559, -0.2627

Trichromacy



Original Color

65.0243, 4.1459, 1.7352

Protanomaly

65.1637, 0.2224, 1.3538

Deuteranomaly

65.1223, 4.4748, 1.8591

Tritanomaly

64.9309, 5.4866, 0.1880

Monochromacy



Original Color

65.0243, 4.1459, 1.7352

Achromatopsia

65.8903, -3.5157, 3.5799

Achromatomaly

65.3948, -0.6127, 2.5733

CSS Examples

Text

The CSS property to change the color of the text to HunterLab 65.0243, 4.1459, 1.7352 is called "color". The color property can be set on classes, ids or directly on the HTML element.

This example shows how text in the color `rgb(188, 169, 178)` looks like.

```
.text, #text, p{  
    color:rgb(188, 169, 178)  
}
```

If you want to add a text shadow in that color use the text-shadow property, you can generate a text shadow directly with our [CSS Text Shadow Generator](#).

Here you see how black text with a 4 pixel rgb(188, 169, 178) colored shadow looks like.

```
.shadow{ text-shadow: 4px 4px 2px rgb(188, 169, 178) }
```

Border

The CSS property to change the border of an element to HunterLab 65.0243, 4.1459, 1.7352 is called "border".

The border property can be set on classes, ids or directly on the HTML element.

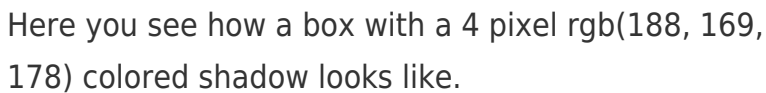
This example shows the color as border, it can be applied via the CSS property "border" or "border-color".

```
.border, #border, table{ border:4px solid rgb(188, 169, 178) }
```


If only the border color should be changed use the property `border-color`.

```
.border{ border-color:rgb(188, 169, 178) }
```

If you want to add a box shadow in that color use:



Here you see how a box with a 4 pixel `rgb(188, 169, 178)` colored shadow looks like.

```
.boxshadow{ -moz-box-shadow:4px 4px 4px 4px rgb(188, 169, 178); -webkit-box-shadow:4px 4px 4px 4px rgb(188, 169, 178); box-shadow:4px 4px 4px 4px rgb(188, 169, 178) }
```

Background

The CSS property to change the background color of an element to HunterLab 65.0243, 4.1459, 1.7352 is called "background". The background property can be set on classes, ids or directly on the HTML element.

```
.background, #background, body{  
background: rgb(188, 169, 178) }
```

If only the background color should be changed can be used:

```
.background{ background-color: rgb(188,  
169, 178) }
```

This example shows the color as background, it is applied via the CSS property "background".

To optimize and compress your CSS code, you can use our [online CSS compressor and optimizer](#) based on csstidy. If you want to create a linear or radial gradient as background or border, check our [CSS Gradient Generator](#).

Hey! You found this booklet interesting? Support Converting Colors with the new Membership Option!

The pro membership hides all ads, plus gives you double the colors in the color bucket, and more awesome pro features!

[Learn more, Memberships starting at \\$2.50/m!](#)

**Follow me
on Twitter!**

@ConvertingColor