

Converting Colors

HunterLab(65.0986, 27.8693,
1.9893)

Have a look what the booklet for
HunterLab(65.0986, 27.8693,
1.9893) contains.

HunterLab(65.0916, 27.8058, 1.7493)	3
<i>Conversions</i>	4
<i>Details</i>	6
<i>Harmonies</i>	12
<i>Previews</i>	24
<i>Color Blindness Simulation</i>	28
<i>CSS Examples</i>	31

Color

**HunterLab(65.0916, 27.8058,
1.7493)**

Conversions

Conversions Part 1

Format	Color
Hex	E598B3
RGB	229, 152, 179
RGB Percent	90%, 60%, 70%
CMY	0.1020, 0.4039, 0.2980
CMYK	0.00, 0.34, 0.22, 0.10
HSL	339°, 60%, 75%
HSV	339°, 34%, 90%
XYZ	51.6780, 42.3692, 48.1022
YIQ	178.1010, 37.2250, 24.7210

Conversions

Conversions Part 2

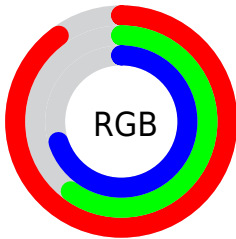
Format	Color
R _Y B	229, 152, 179
Decimal	15046835
CIE Lab	71.13, 32.55, -2.11
CIE LCh	71, 32.621, 356.298
Yxy	42.3712, 0.3635, 0.2981
Android (android.graphics.Color)	4293236915 (0xFFE598B3)
YUV	178.1010, 0.4432, 44.6384
Hunter-Lab	65.0916, 27.8058, 1.7493

Details

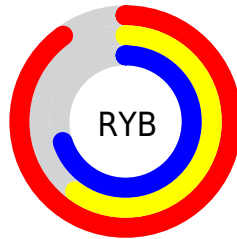
The HunterLab color **65.0916, 27.8058, 1.7493** is a light color, and the websafe version is hex **FF99CC**. A complement of this color would be **81.8409, -30.6119, 9.4113**, and the grayscale version is **66.7541, -3.5618, 3.6269**.

A 20% lighter version of the original color is **84.7843, 16.9983, -2.4221**, and **44.0356, 25.6394, 1.0071** is the 20% darker color. If you saturate the color by 10%, you get **59.2212, 37.6953, 1.9274**, and if you desaturate by 10%, it is **71.5337, 17.9185, 2.1517**.

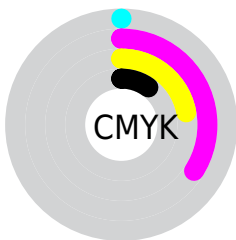
Distribution



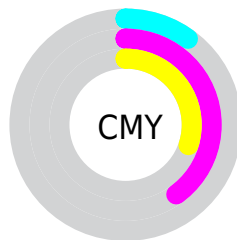
- Red (90%)
- Green (60%)
- Blue (70%)



- Red (90%)
- Yellow (60%)
- Blue (70%)



- Cyan (0%)
- Magenta (34%)
- Yellow (22%)
- Black (10%)



- Cyan (10%)
- Magenta (40%)
- Yellow (30%)

Brightness & Saturation Gradients

These gradients show how the HunterLab color 65.0916, 27.8058, 1.7493 changes by changing the brightness by 10 percent. The first figure shows a shift by +10% for each color and the second figure -10%.

Similar to the brightness gradients but the following saturation gradients show a change of the HunterLab color 65.0916, 27.8058, 1.7493 by changing the saturation by 10% instead.

65.0916, 27.8058,
1.7493

65.0916, 27.8058,
1.7493

188.6847, 32.6405,
7.7328

54.2144, 26.8567,
1.2614

88.7474, 29.4022,
2.8482

44.0200, 25.7990,
0.8161

101.4596, 30.0718,
3.4517

34.5593, 24.6183,
0.4190

114.7268, 30.6640,
4.0891

25.8943, 23.3037,
0.0755

128.5266, 31.1846,
4.7586

18.1064, 21.8518,
-0.2067

142.8392, 31.6384,
5.4589

11.3082, 20.2958,
-0.4159

157.6469, 32.0299,

3.5308, 40.0893,

6.1888

-2.2807

172.9336, 32.3628,
6.9471

0.0000, NaN, NaN

0.0000, NaN, NaN

■ 65.0916, 27.8058,
1.7493

■ 65.0916, 27.8058,
1.7493

■ 59.2212, 37.6953,
1.9274

■ 71.5337, 17.9185,
2.1517

■ 54.0248, 47.3122,
2.7942

■ 78.4527, 8.1872,
3.0239

■ 49.6221, 56.1859,
4.4423

■ 85.7769, -1.3311,
4.2765

■ 46.1268, 63.6643,
6.8947

■ 93.4474, -10.6252,
5.8365

■ 43.6183, 69.0366,

■ 97.6180, -13.8321,

10.0491

3.2870

■ 42.0988, 71.8215,
13.6463

■ 97.6720, -13.5317,
2.5182

■ 41.5230, 72.5146,
15.9385

Harmonies

Analogous

The Analogous color harmony consists of three colors that are next to each other on the color wheel.



65.0931, 22.2369, -13.5511



65.0916, 27.8058, 1.7493



65.0931, 24.3846, 14.5424

Triad

The Triadic color harmony groups three colors that are evenly spaced from another and form a triangle on the color wheel.



65.0931, 27.8031, 1.7506



65.0931, -15.7423, 23.6181



65.0931, -18.6879, -23.5944

Complementary

The Complementary color scheme is a pair of colors which are on the opposite of each other on the color wheel.



65.0916, 27.8058, 1.7493



81.8409, -30.6119, 9.4113

Split Complementary

Split-complementary colors differ from the complementary color scheme. The scheme consists of three colors, the original color and two neighbors of the complement color.



65.0931, -27.3198, -9.7898



65.0916, 27.8058, 1.7493



65.0931, -25.7300, 16.9767

Square

The Square scheme is like the rectangle color scheme, but the four colors are evenly spaced on the color wheel.



65.0931, 27.8031, 1.7506



65.0931, -1.6080, 25.3698



65.0931, -29.7777, 5.2862



65.0931, -5.3245, -30.1237

Rectangle

The Rectangle color scheme consists of four colors that form a rectangle on the color wheel.



65.0916, 27.8058, 1.7493



65.0931, 17.6238, 20.3901



65.0931, -29.7777, 5.2862



65.0931, -22.1906, -19.5179

Sweetspot

The Sweet Spot groups the original color and five complimentary colors.



65.0931, 27.8031, 1.7506



91.5285, 5.3889, 3.8758



63.6404, 27.1803, -29.3709



41.8099, 3.2000, 1.7058

0.0000, NaN, NaN



46.2646, -2.4686, 2.5136

Same Dimension

The Same Dimension uses a secret algorithm to generate beautiful new colors.



65.0931, 27.8031, 1.7506



69.0697, 38.8166, 2.0287



66.9789, 18.5681, 15.2993



38.0145, 1.9577, 1.6353



31.4301, 54.9520, 11.5725



8.6434, 15.3029, 1.7033

Inverse Universe

The Inverse Universe completely reimagines the original color for something new.



65.0931, 27.8031, 1.7506



69.0697, 38.8166, 2.0287



79.2829, -20.8709, -6.9475



38.0145, 1.9577, 1.6353



31.4301, 54.9520, 11.5725



8.6434, 15.3029, 1.7033

Previews

White Background



This preview shows how the HunterLab color 65.0916, 27.8058, 1.7493 looks on a white background.

Color Contrast Check

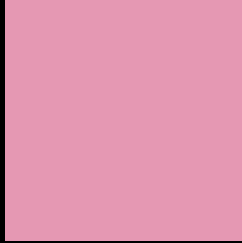
Large Text (above 18pt) WCAG AA × Fail

Any Text WCAG AA × Fail

Large Text (above 18pt) WCAG AAA × Fail

Any Text WCAG AAA × Fail

Black Background



This preview shows how the HunterLab color 65.0916, 27.8058, 1.7493 looks on a black background.

Color Contrast Check

Large Text (above 18pt) WCAG AA ✓ Pass

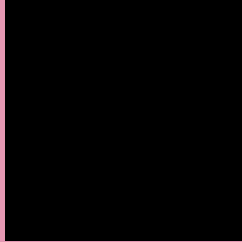
Any Text WCAG AA ✓ Pass

Large Text (above 18pt) WCAG AAA ✓ Pass

Any Text WCAG AAA ✓ Pass

If you want to check with other color combinations, try the [Color Contrast Checker](#).

HunterLab 65.0916, 27.8058, 1.7493 Background



This preview shows how black text looks on a background with the HunterLab color 65.0916, 27.8058, 1.7493.



This preview shows how white text looks on a background with the HunterLab color 65.0916, 27.8058,

1.7493.

Color Blindness Simulation

Color vision deficiency is a very complex topic, and I could not describe the different causes any better than Wikipedia does, so if you want to learn more, you should check out their [article about color blindness](#).

Dichromacy



Original Color

65.0916, 27.8058, 1.7493

Protanopia

65.2512, -0.1388, -5.1082

Deuteranopia

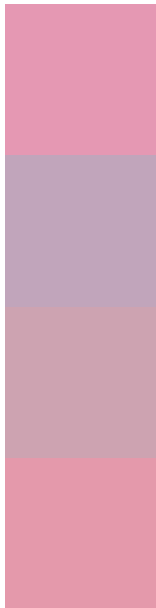
65.2586, 4.8098, 2.9787



Tritanopia

65.0833, 24.4250, 7.6665

Trichromacy



Original Color

65.0916, 27.8058, 1.7493

Protanomaly

64.6804, 9.3881, -3.0755

Deuteranomaly

65.0752, 12.8710, 2.4272

Tritanomaly

64.9744, 25.6808, 5.3291

Monochromacy



Original Color

65.0916, 27.8058, 1.7493

Achromatopsia

66.7234, -3.5602, 3.6252

Achromatomaly

65.9247, 7.1519, 2.8671

CSS Examples

Text

The CSS property to change the color of the text to HunterLab 65.0916, 27.8058, 1.7493 is called "color". The color property can be set on classes, ids or directly on the HTML element.

This example shows how text in the color `rgb(229, 152, 179)` looks like.

```
.text, #text, p{  
    color:rgb(229, 152, 179)  
}
```

If you want to add a text shadow in that color use the text-shadow property, you can generate a text shadow directly with our [CSS Text Shadow Generator](#).

Here you see how black text with a 4 pixel rgb(229, 152, 179) colored shadow looks like.

```
.shadow{ text-shadow: 4px 4px 2px rgb(229, 152, 179) }
```

Border

The CSS property to change the border of an element to HunterLab 65.0916, 27.8058, 1.7493 is called "border". The border property can be set on classes, ids or directly on the HTML element.

This example shows the color as border, it can be applied via the CSS property "border" or "border-color".

```
.border, #border, table{ border:4px solid rgb(229, 152, 179) }
```


If only the border color should be changed use the property `border-color`.

```
.border{ border-color:rgb(229, 152, 179) }
```

If you want to add a box shadow in that color use:

Here you see how a box with a 4 pixel `rgb(229, 152, 179)` colored shadow looks like.

```
.boxshadow{ -moz-box-shadow:4px 4px 4px  
4px rgb(229, 152, 179); -webkit-box-  
shadow:4px 4px 4px 4px rgb(229, 152, 179);  
box-shadow:4px 4px 4px 4px rgb(229, 152,  
179) }
```

Background

The CSS property to change the background color of an element to HunterLab 65.0916, 27.8058, 1.7493 is called "background". The background property can be set on classes, ids or directly on the HTML element.

```
.background, #background, body{  
background: rgb(229, 152, 179) }
```

If only the background color should be changed can be used:

```
.background{ background-color: rgb(229,  
152, 179) }
```

This example shows the color as background, it is applied via the CSS property "background".

To optimize and compress your CSS code, you can use our [online CSS compressor and optimizer](#) based on csstidy. If you want to create a linear or radial gradient as background or border, check our [CSS Gradient Generator](#).

Hey! You found this booklet interesting? Support Converting Colors with the new Membership Option!

The pro membership hides all ads, plus gives you double the colors in the color bucket, and more awesome pro features!

[Learn more, Memberships starting at \\$2.50/m!](#)

**Follow me
on Twitter!**

@ConvertingColor