

Converting Colors

HunterLab(65.1000, 14.0925,
11.5747)

Have a look what the booklet for
HunterLab(65.1000, 14.0925,
11.5747) contains.

| | |
|---------------------------------------------------|----|
| HunterLab(64.9509, 14.0659, 11.5575) | 3 |
| <i>Conversions</i> | 4 |
| <i>Details</i> | 6 |
| <i>Harmonies</i> | 12 |
| <i>Previews</i> | 24 |
| <i>Color Blindness Simulation</i> | 28 |
| <i>CSS Examples</i> | 31 |

Color

**HunterLab(64.9509, 14.0659,
11.5575)**

Conversions

Conversions Part 1

| Format | Color |
|-------------|---------------------------|
| Hex | D6A19C |
| RGB | 214, 161, 156 |
| RGB Percent | 84%, 63%, 61% |
| CMY | 0.1608, 0.3686, 0.3882 |
| CMYK | 0.00, 0.25, 0.27, 0.16 |
| HSL | 5°, 41%, 73% |
| HSV | 5°, 27%, 84% |
| XYZ | 46.4772, 42.1862, 37.1456 |
| YIQ | 176.2770, 33.1930, 9.6810 |

Conversions

Conversions Part 2

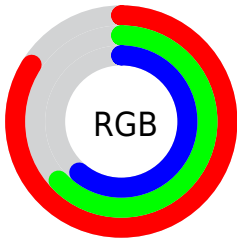
| Format | Color |
|-------------------------------------|-------------------------------|
| R _Y B | 214, 161, 156 |
| Decimal | 14066076 |
| CIE Lab | 71.00, 18.92, 10.25 |
| CIE LCh | 71, 21.517, 28.454 |
| Yxy | 42.1882, 0.3694, 0.3353 |
| Android (android.graphics.Color) | 4292256156 (0xFFD6A19C) |
| YUV | 176.2770, -9.9966, 33.0831 |
| Hunter-Lab | 64.9509, 14.0659, 11.5575 |

Details

The HunterLab color **64.9509, 14.0659, 11.5575** is a light color, and the websafe version is hex **CC9999**. A complement of this color would be **75.8433, -18.2318, -3.3182**, and the grayscale version is **66.0374, -3.5236, 3.5879**.

A 20% lighter version of the original color is **86.6169, 7.9854, 11.7764**, and **43.8478, 13.3105, 9.1805** is the 20% darker color. If you saturate the color by 10%, you get **59.3443, 21.4805, 14.1899**, and if you desaturate by 10%, it is **70.9614, 6.9778, 8.9192**.

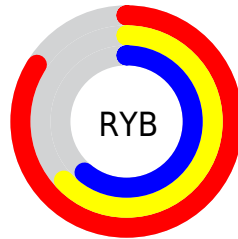
Distribution



Red (84%)

Green (63%)

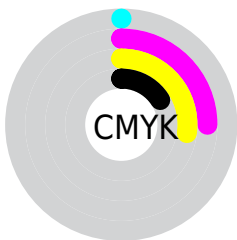
Blue (61%)



Red (84%)

Yellow (63%)

Blue (61%)

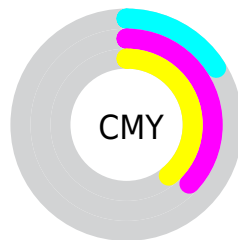


Cyan (0%)

Magenta (25%)

Yellow (27%)

Black (16%)



Cyan (16%)


Magenta (37%)

Yellow (39%)

Brightness & Saturation Gradients


These gradients show how the HunterLab color 64.9509, 14.0659, 11.5575 changes by changing the brightness by 10 percent. The first figure shows a shift by +10% for each color and the second figure -10%.


Similar to the brightness gradients but the following saturation gradients show a change of the HunterLab color 64.9509, 14.0659, 11.5575 by changing the saturation by 10% instead.


 64.9509, 14.0659,
11.5575


 64.9509, 14.0659,
11.5575


188.4840, 14.3150,
22.1150

 54.0820, 13.7121,
10.4234


 88.5914, 14.5322,
13.8366

 43.8965, 13.2703,
9.2843


 101.2965, 14.6641,
14.9857

 34.4453, 12.7252,
8.1331


114.5568, 14.7352,
16.1441

 25.7909, 12.0605,
6.9572

128.3500, 14.7500,
17.3134

 18.0146, 11.2547,
5.7345

142.6563, 14.7122,
18.4945

 11.2297, 10.2828,
4.6440

157.4579, 14.6253,

 3.3280, 24.5915,

19.6881

2.3296

172.7386, 14.4921,
20.8948

0.0000, NaN, NaN

0.0000, NaN, NaN

■ 64.9509, 14.0659,
11.5575

■ 64.9509, 14.0659,
11.5575

■ 59.3443, 21.4805,
14.1899

■ 70.9614, 6.9778,
8.9192

■ 54.2098, 29.1733,
16.7627

■ 77.3119, 0.2274,
6.2985

■ 49.6347, 36.9951,
19.1919

■ 83.9557, -6.2108,
3.7083

■ 45.7144, 44.6651,
21.3495

■ 90.8542, -12.3709,
1.1521

■ 42.5433, 51.7430,

■ 96.4553, -17.8959,

23.0711

0.9676

■ 40.1946, 57.6705,
24.1935

■ 38.6890, 61.9160,
24.6511

■ 38.3979, 62.7603,
24.7593

Harmonies

Analogous

The Analogous color harmony consists of three colors that are next to each other on the color wheel.



64.9524, 16.6008, 3.0468



64.9509, 14.0659, 11.5575



64.9524, 6.7557, 17.1099

Triad

The Triadic color harmony groups three colors that are evenly spaced from another and form a triangle on the color wheel.



64.9524, 14.0634, 11.5586



64.9524, -18.8570, 12.2852



64.9524, -3.9802, -17.2122

Complementary

The Complementary color scheme is a pair of colors which are on the opposite of each other on the color wheel.



64.9509, 14.0659, 11.5575



75.8433, -18.2318, -3.3182

Split Complementary

Split-complementary colors differ from the complementary color scheme. The scheme consists of three colors, the original color and two neighbors of the complement color.



64.9524, -13.0983, -13.7986



64.9509, 14.0659, 11.5575



64.9524, -21.3640, 4.0205

Square

The Square scheme is like the rectangle color scheme, but the four colors are evenly spaced on the color wheel.



64.9524, 14.0634, 11.5586



64.9524, -12.2620, 17.4834



64.9524, -19.3191, -5.6626



64.9524, 5.8177, -14.4138

Rectangle

The Rectangle color scheme consists of four colors that form a rectangle on the color wheel.



64.9509, 14.0659, 11.5575



64.9524, 0.3712, 18.8464



64.9524, -19.3191, -5.6626



64.9524, -7.2224, -16.7446

Sweetspot

The Sweet Spot groups the original color and five complimentary colors.



64.9524, 14.0634, 11.5586



93.5059, 1.0647, 7.9917



65.3339, 25.4124, -14.1364



42.7069, 1.0622, 3.9212

0.0000, NaN, NaN



46.2646, -2.4686, 2.5136

Same Dimension

The Same Dimension uses a secret algorithm to generate beautiful new colors.



64.9524, 14.0634, 11.5586



74.8862, 22.7374, 16.0978



73.1106, -0.7165, 19.5306



35.4842, 0.8257, 3.2314



29.9591, 48.4374, 19.3086



7.7613, 10.6029, 4.9681

Inverse Universe

The Inverse Universe completely reimagines the original color for something new.



75.8433, -18.2318, -3.3182



91.0142, -25.3240, -5.9918



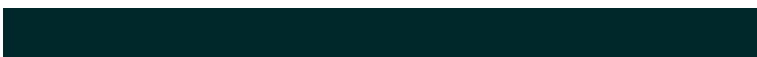
66.8081, -4.1543, -15.3652



37.3042, -4.5307, 0.7555



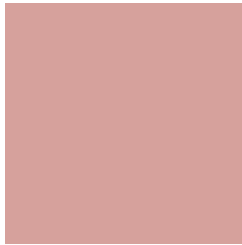
51.7185, -24.0921, -12.6357



12.9167, -6.1840, -2.7952

Previews

White Background



This preview shows how the HunterLab color 64.9509, 14.0659, 11.5575 looks on a white background.

Color Contrast Check

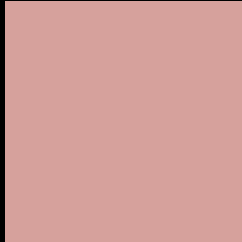
Large Text (above 18pt) WCAG AA × Fail

Any Text WCAG AA × Fail

Large Text (above 18pt) WCAG AAA × Fail

Any Text WCAG AAA × Fail

Black Background



This preview shows how the HunterLab color 64.9509, 14.0659, 11.5575 looks on a black background.

Color Contrast Check

Large Text (above 18pt) WCAG AA ✓ Pass

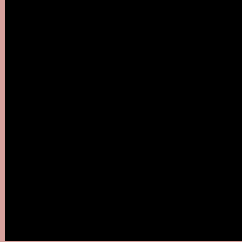
Any Text WCAG AA ✓ Pass

Large Text (above 18pt) WCAG AAA ✓ Pass

Any Text WCAG AAA ✓ Pass

If you want to check with other color combinations, try the [Color Contrast Checker](#).

HunterLab 64.9509, 14.0659, 11.5575 Background



This preview shows how black text looks on a background with the HunterLab color 64.9509, 14.0659, 11.5575.



This preview shows how white text looks on a background with the HunterLab color 64.9509, 14.0659,

Color Blindness Simulation

Color vision deficiency is a very complex topic, and I could not describe the different causes any better than Wikipedia does, so if you want to learn more, you should check out their [article about color blindness](#).

Dichromacy



Original Color

64.9509, 14.0659, 11.5575

Protanopia

64.9883, -2.8286, 8.3838

Deuteranopia

65.0981, 4.5547, 11.9493



Tritanopia

65.0657, 18.0030, 5.3003

Trichromacy



Original Color

64.9509, 14.0659, 11.5575

Protanomaly

64.9003, 2.6865, 9.6555

Deuteranomaly

64.8954, 8.2103, 11.8002

Tritanomaly

65.0706, 16.3670, 7.5112

Monochromacy



Original Color

64.9509, 14.0659, 11.5575

Achromatopsia

65.8903, -3.5157, 3.5799

Achromatomaly

65.5267, 2.3534, 6.4550

CSS Examples

Text

The CSS property to change the color of the text to HunterLab 64.9509, 14.0659, 11.5575 is called "color". The color property can be set on classes, ids or directly on the HTML element.

This example shows how text in the color `rgb(214, 161, 156)` looks like.

```
.text, #text, p{  
    color:rgb(214, 161, 156)  
}
```

If you want to add a text shadow in that color use the text-shadow property, you can generate a text shadow directly with our [CSS Text Shadow Generator](#).

Here you see how black text with a 4 pixel rgb(214, 161, 156) colored shadow looks like.

```
.shadow{ text-shadow: 4px 4px 2px rgb(214, 161, 156) }
```

Border

The CSS property to change the border of an element to HunterLab 64.9509, 14.0659, 11.5575 is called "border". The border property can be set on classes, ids or directly on the HTML element.

This example shows the color as border, it can be applied via the CSS property "border" or "border-color".

```
.border, #border, table{ border:4px solid rgb(214, 161, 156) }
```


If only the border color should be changed use the property `border-color`.

```
.border{ border-color:rgb(214, 161, 156) }
```

If you want to add a box shadow in that color use:

Here you see how a box with a 4 pixel `rgb(214, 161, 156)` colored shadow looks like.

```
.boxshadow{ -moz-box-shadow:4px 4px 4px  
4px rgb(214, 161, 156); -webkit-box-  
shadow:4px 4px 4px 4px rgb(214, 161, 156);  
box-shadow:4px 4px 4px 4px rgb(214, 161,  
156) }
```

Background

The CSS property to change the background color of an element to HunterLab 64.9509, 14.0659, 11.5575 is called "background". The background property can be set on classes, ids or directly on the HTML element.

```
.background, #background, body{  
background: rgb(214, 161, 156) }
```

If only the background color should be changed can be used:

```
.background{ background-color: rgb(214,  
161, 156) }
```

This example shows the color as background, it is applied via the CSS property "background".

To optimize and compress your CSS code, you can use our [online CSS compressor and optimizer](#) based on csstidy. If you want to create a linear or radial gradient as background or border, check our [CSS Gradient Generator](#).

Hey! You found this booklet interesting? Support Converting Colors with the new Membership Option!

The pro membership hides all ads, plus gives you double the colors in the color bucket, and more awesome pro features!

[Learn more, Memberships starting at \\$2.50/m!](#)

**Follow me
on Twitter!**

@ConvertingColor